

# Brightside Ln. Corner Lot Baton Rouge, LA

LAND FOR SALE



Baton Rouge, LA

Beau Box | 225.931.3200 | [bbox@beaubox.com](mailto:bbox@beaubox.com)

PROPERTY DESCRIPTION



**Property Highlights:**

- 1.26 Acres for Sale
- Located near the corner of Brightside Ln. and Nicholson Dr.
- +/- 300' frontage on Brightside Ln.
- City sewer and water available
- No wetlands
- 1.8 Miles from LSU
- Zoned LC2
- Sale price: \$1,000,000

**Beau Box**  
225.931.3200  
bbox@beaubox.com

Broker of Record, Beau J. Box; Licensed by the Louisiana Real Estate Commission, Mississippi Real Estate Commission, Alabama Real Estate Commission and Florida Real Estate Commission, USA. This information has been secured from sources we believe to be reliable, but we make no representations or warranties, expressed or implied, as to the accuracy of the information. References to square footage or age are approximate. Buyer must verify the information and bears all risk for any inaccuracies. © Beau Box Commercial Real Estate. | May 06, 2020

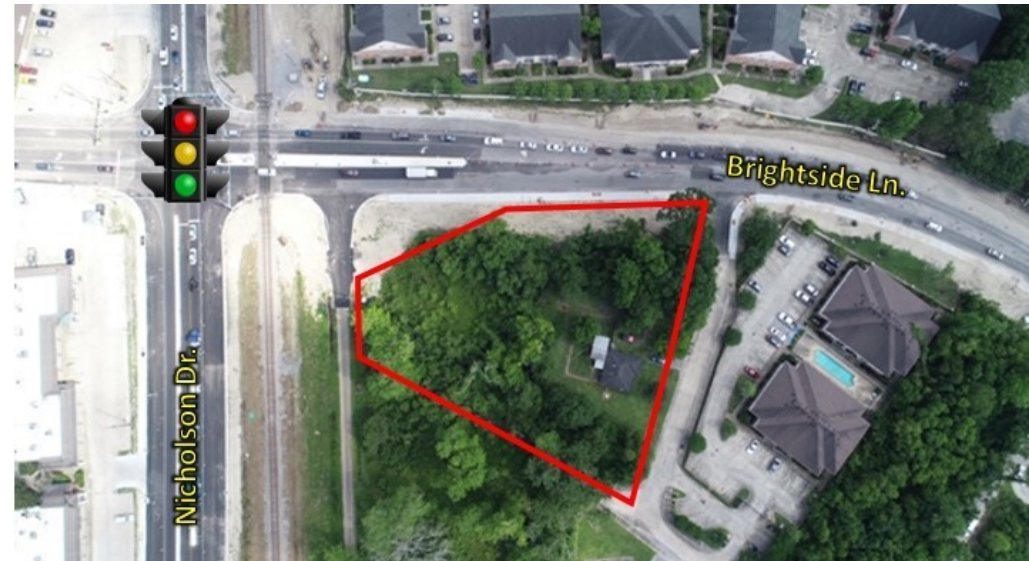




# Brightside Lane

## Baton Rouge, LA 70820

### ADDITIONAL PHOTOS



**Beau Box**  
225.931.3200  
bbox@beaubox.com

Broker of Record, Beau J. Box; Licensed by the Louisiana Real Estate Commission, Mississippi Real Estate Commission, Alabama Real Estate Commission and Florida Real Estate Commission, USA. This information has been secured from sources we believe to be reliable, but we make no representations or warranties, expressed or implied, as to the accuracy of the information. References to square footage or age are approximate. Buyer must verify the information and bears all risk for any inaccuracies. © Beau Box Commercial Real Estate. | May 06, 2020





**Brightside Lane**  
Baton Rouge, LA 70820

AERIAL MAP

**Curb Cut**

**Brightside Ln.**

**Nicholson Dr.**

**Ward St.**

**Beau Box**  
225.931.3200  
bbox@beaubox.com

Broker of Record, Beau J. Box; Licensed by the Louisiana Real Estate Commission, Mississippi Real Estate Commission, Alabama Real Estate Commission and Florida Real Estate Commission, USA. This information has been secured from sources we believe to be reliable, but we make no representations or warranties, expressed or implied, as to the accuracy of the information. References to square footage or age are approximate. Buyer must verify the information and bears all risk for any inaccuracies. © Beau Box Commercial Real Estate. | May 06, 2020

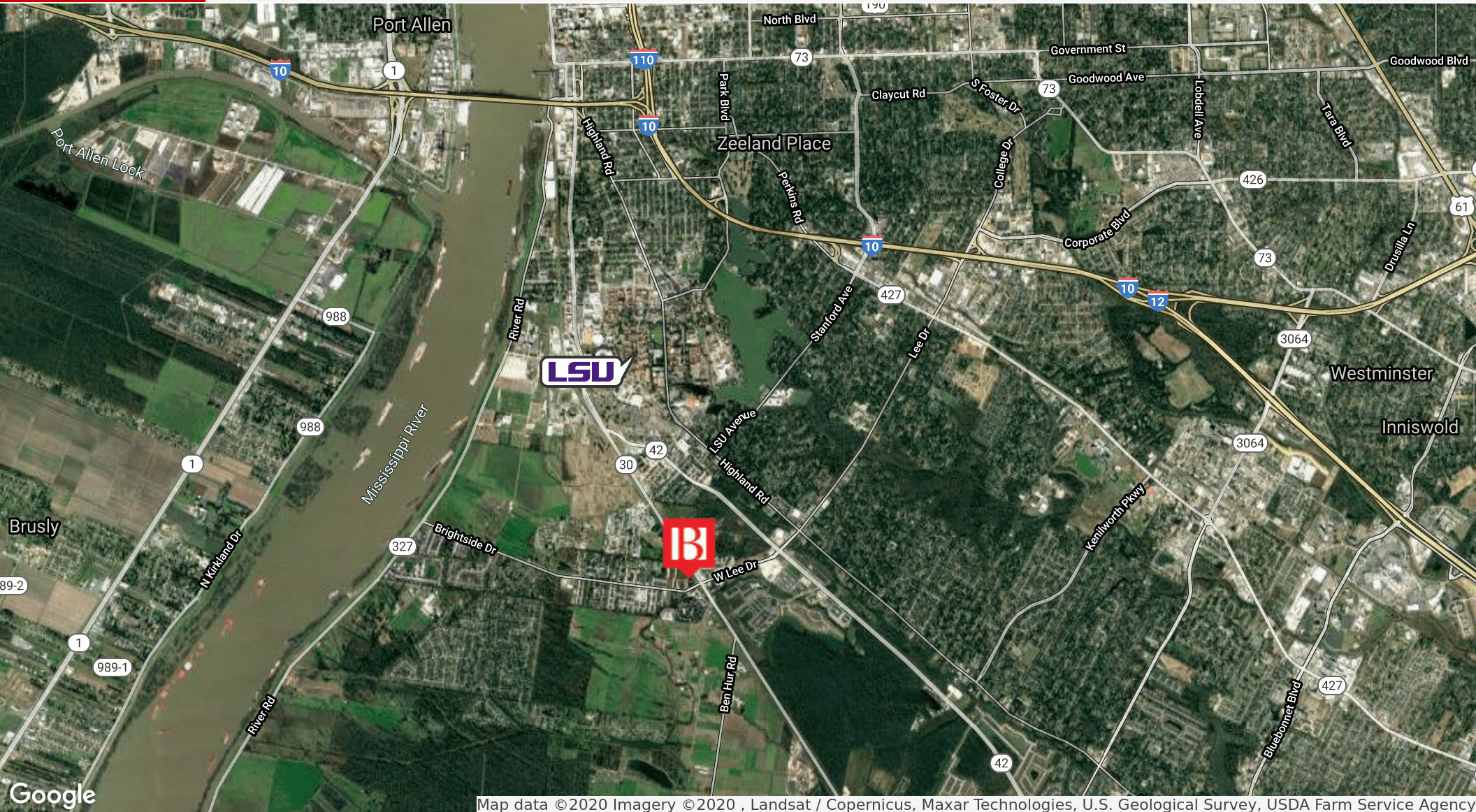




# Brightside Lane

## Baton Rouge, LA 70820

### LOCATION MAP



Map data ©2020 Imagery ©2020 , Landsat / Copernicus, Maxar Technologies, U.S. Geological Survey, USDA Farm Service Agency

**Beau Box**  
225.931.3200  
bbox@beaubox.com

Broker of Record, Beau J. Box; Licensed by the Louisiana Real Estate Commission, Mississippi Real Estate Commission, Alabama Real Estate Commission and Florida Real Estate Commission, USA. This information has been secured from sources we believe to be reliable, but we make no representations or warranties, expressed or implied, as to the accuracy of the information. References to square footage or age are approximate. Buyer must verify the information and bears all risk for any inaccuracies. © Beau Box Commercial Real Estate. | May 06, 2020





# Brightside Lane

## Baton Rouge, LA 70820

### RETAILER MAP



**Beau Box**  
225.931.3200  
bbox@beaubox.com

Broker of Record, Beau J. Box; Licensed by the Louisiana Real Estate Commission, Mississippi Real Estate Commission, Alabama Real Estate Commission and Florida Real Estate Commission, USA. This information has been secured from sources we believe to be reliable, but we make no representations or warranties, expressed or implied, as to the accuracy of the information. References to square footage or age are approximate. Buyer must verify the information and bears all risk for any inaccuracies. © Beau Box Commercial Real Estate. | May 06, 2020

