

DRUSILLA OFFICE PARK
3266

DRUSILLA OFFICE PARK

FOR SALE OR LEASE

Baton Rouge, LA

Austin Lolan | 337.577.4700 | alolan@beaubox.com



PROPERTY DESCRIPTION



PROPERTY HIGHLIGHTS:

- Drusilla Office Park is located on Drusilla near Jefferson Hwy.
- Convenient access to I-12
- Built in 2019 with white brick exterior and high-end finishes
- Building A is available for sale or lease and consists of 6 suites
- Each suite is 1,034 SF and can be combined to fit users needing up to a total of 4,136 SF for the whole building.
- Lease price: \$18.00 PSF
- Sale price: \$189.00 PSF
- Drusilla Office Park pad sites are also available for sale at \$75.00 PSF
- Pad Site #1 - 3,000 SF
- Pad Site #2 - 5,000 SF
- Pad Site #3 - 7,000 SF
- Pad Site #4 - 7,995 SF

Austin Lolan

337.577.4700

alolan@beaibox.com

Broker of Record, Beau J. Box; Licensed by the Louisiana Real Estate Commission, Mississippi Real Estate Commission, Alabama Real Estate Commission and Florida Real Estate Commission, USA. This information has been secured from sources we believe to be reliable, but we make no representations or warranties, expressed or implied, as to the accuracy of the information. References to square footage or age are approximate. Buyer must verify the information and bears all risk for any inaccuracies. © Beau Box Commercial Real Estate. | March 10, 2021



3266 Drusilla Lane
Baton Rouge, LA 70809

LOCATION MAPS



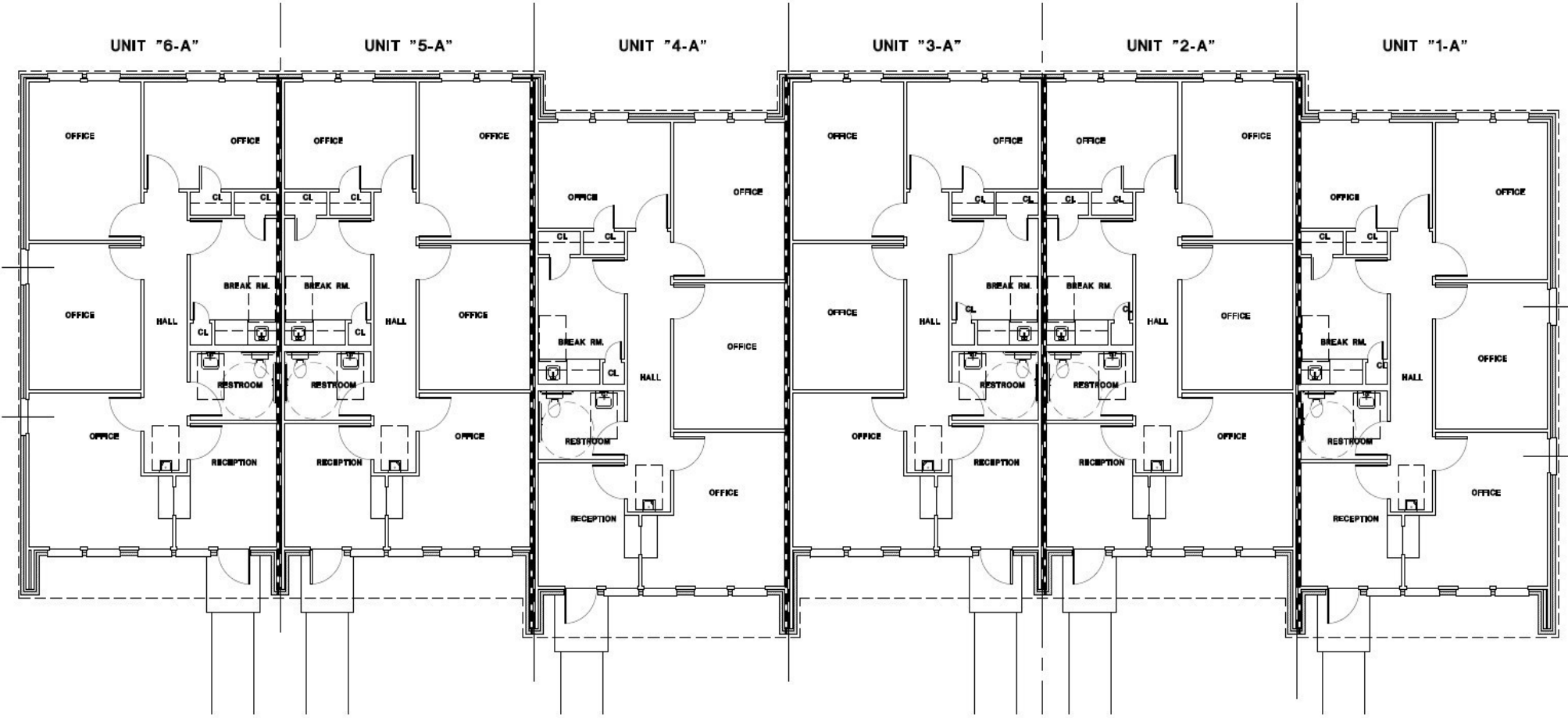
Map data ©2021

Austin Lolan
337.577.4700
alolan@beaibox.com

Broker of Record, Beau J. Box; Licensed by the Louisiana Real Estate Commission, Mississippi Real Estate Commission, Alabama Real Estate Commission and Florida Real Estate Commission, USA. This information has been secured from sources we believe to be reliable, but we make no representations or warranties, expressed or implied, as to the accuracy of the information. References to square footage or age are approximate. Buyer must verify the information and bears all risk for any inaccuracies. © Beau Box Commercial Real Estate. | March 10, 2021



FLOOR PLAN



FLOOR PLAN BUILDING "A"

SCALE: 1/8"=1'-0"

6,204 SQ. FT.

Austin Lolan
337.577.4700
alolan@beaibox.com

Broker of Record, Beau J. Box; Licensed by the Louisiana Real Estate Commission, Mississippi Real Estate Commission, Alabama Real Estate Commission and Florida Real Estate Commission, USA. This information has been secured from sources we believe to be reliable, but we make no representations or warranties, expressed or implied, as to the accuracy of the information. References to square footage or age are approximate. Buyer must verify the information and bears all risk for any inaccuracies. © Beau Box Commercial Real Estate. | March 10, 2021



3266 Drusilla Lane
Baton Rouge, LA 70809

AERIAL PHOTOS



Austin Lolan
337.577.4700
alolan@beaibox.com

Broker of Record, Beau J. Box; Licensed by the Louisiana Real Estate Commission, Mississippi Real Estate Commission, Alabama Real Estate Commission and Florida Real Estate Commission, USA. This information has been secured from sources we believe to be reliable, but we make no representations or warranties, expressed or implied, as to the accuracy of the information. References to square footage or age are approximate. Buyer must verify the information and bears all risk for any inaccuracies. © Beau Box Commercial Real Estate. | March 10, 2021



3266 Drusilla Lane
Baton Rouge, LA 70809

ADDITIONAL PHOTOS



Austin Lolan
337.577.4700
alolan@beaubox.com

Broker of Record, Beau J. Box; Licensed by the Louisiana Real Estate Commission, Mississippi Real Estate Commission, Alabama Real Estate Commission and Florida Real Estate Commission, USA. This information has been secured from sources we believe to be reliable, but we make no representations or warranties, expressed or implied, as to the accuracy of the information. References to square footage or age are approximate. Buyer must verify the information and bears all risk for any inaccuracies. © Beau Box Commercial Real Estate. | March 10, 2021



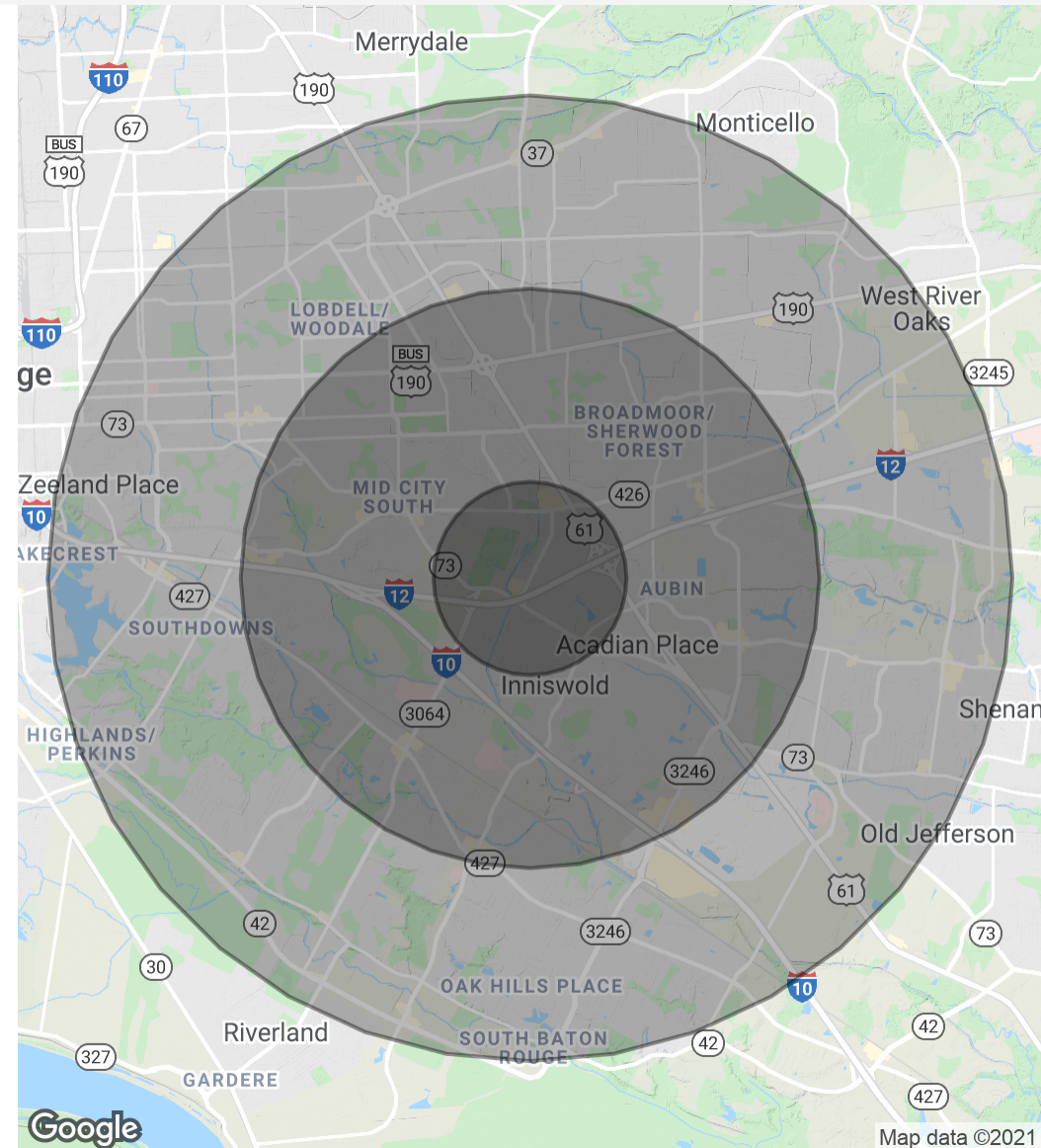
3266 Drusilla Lane Baton Rouge, LA 70809

DEMOGRAPHICS MAP & REPORT

Population	1 Mile	3 Miles	5 Miles
Total Population	7,597	69,259	199,308
Average Age	40.8	37.3	36.0
Average Age (Male)	34.4	33.9	33.7
Average Age (Female)	43.7	40.1	38.1

Households & Income	1 Mile	3 Miles	5 Miles
Total Households	3,880	30,699	83,112
# Of Persons Per HH	2.0	2.3	2.4
Average HH Income	\$75,817	\$73,564	\$72,800
Average House Value	\$358,928	\$255,030	\$246,675

* Demographic data derived from 2010 US Census



Austin Lolan
337.577.4700
alolan@beaibox.com

Broker of Record, Beau J. Box; Licensed by the Louisiana Real Estate Commission, Mississippi Real Estate Commission, Alabama Real Estate Commission and Florida Real Estate Commission, USA. This information has been secured from sources we believe to be reliable, but we make no representations or warranties, expressed or implied, as to the accuracy of the information. References to square footage or age are approximate. Buyer must verify the information and bears all risk for any inaccuracies. © Beau Box Commercial Real Estate. | March 10, 2021

