



1849 W MAPLE ROAD TROY, MI 48084

PROPERTY HIGHLIGHTS:

- Ideal corporate HQ available within Troy's Automotion Alley
- ±31,000 SF available
- Situated on 6.01 acres zoned MR Overlay (multiple uses) for maximum flexibility
- Prominent building signage along Maple Rd
- 312 parking spaces with the ability to add additional
- One (1) grade level door/ one (1) truckwell
- Close proximity to area hotels, restaurants and shopping centers
- Easy access to I-75 at Crooks Road and 14 Mile Rd

The information provided herein along with any attachment(s) was obtained from sources believed to be reliable, however, Friedman Real Estate makes no guarantees, warranties, or representations as to the completeness or accuracy of such information and legal counsel is advised. All information provided is subject to verification and no liability for reliance on such information or errors or omissions is assumed. The presentation of this property is submitted subject to errors, omissions, change of price or conditions, prior sale or lease, or withdrawal without notice. Copyright © 2021 Friedman Real Estate. All rights reserved.

FOR MORE INFORMATION PLEASE CONTACT:



JORDAN FRIEDMAN
jordan.friedman@freg.com



ROBERT GAGNIUK
robert.gagniuk@freg.com

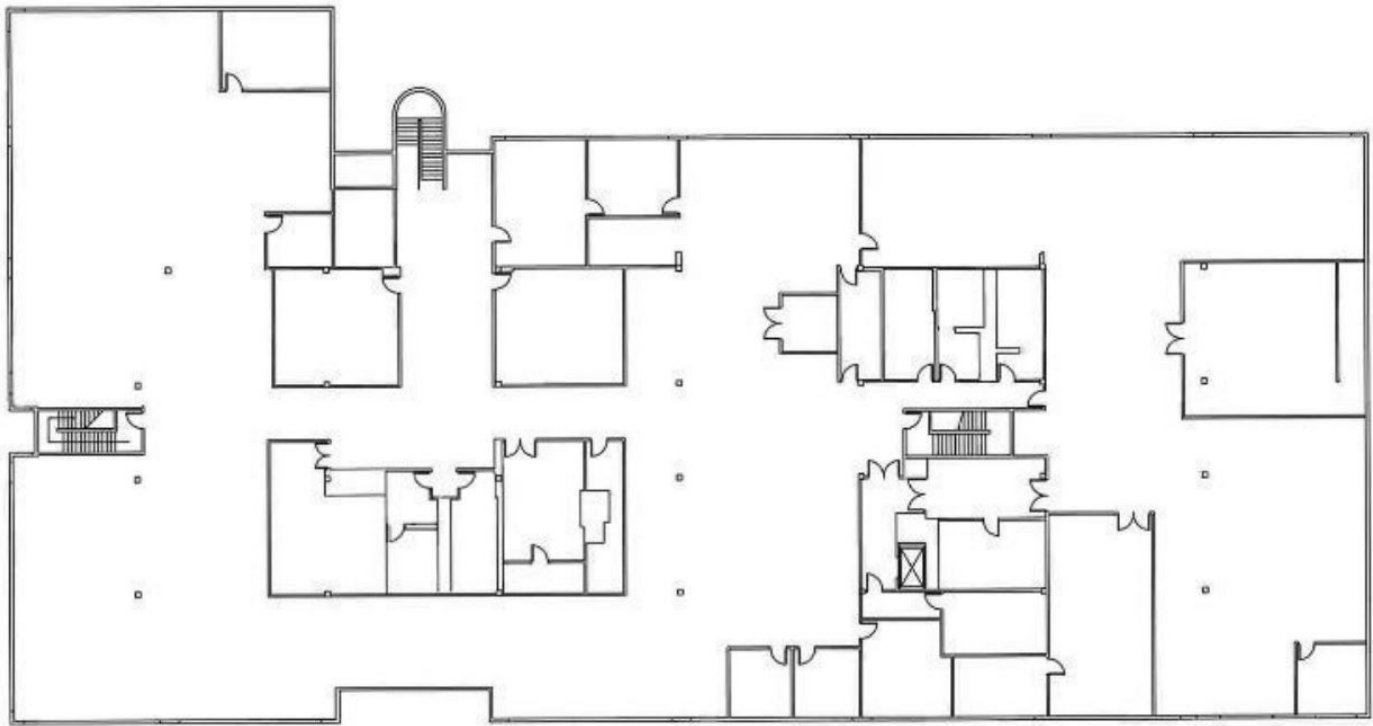
248.324.2000

eCODE 137



1849 W MAPLE ROAD
FLOOR PLATE

FLOORPLATE- 2nd Floor- +/- 31,000 SF



2ND FLOOR

FOR MORE INFORMATION **PLEASE CONTACT:**



JORDAN FRIEDMAN
jordan.friedman@freg.com



ROBERT GAGNIUK
robert.gagniuik@freg.com

1849 W MAPLE ROAD
AREA OVERVIEW



FOR MORE INFORMATION **PLEASE CONTACT:**



JORDAN FRIEDMAN
jordan.friedman@freg.com



ROBERT GAGNIUK
robert.gagniuk@freg.com