



WEST BLOCK OFFICE BUILDING

448 West 700 South, Salt Lake City, UT 84101

PROPERTY DESCRIPTION:

- New Construction
- Located in the Granary District
- 2-Story Office Building with Industrial Feel
- TI Allowance or Turn-Key Buildout Available
- 3/1,000 Parking
- Available Fall 2021

LEASE RATE:

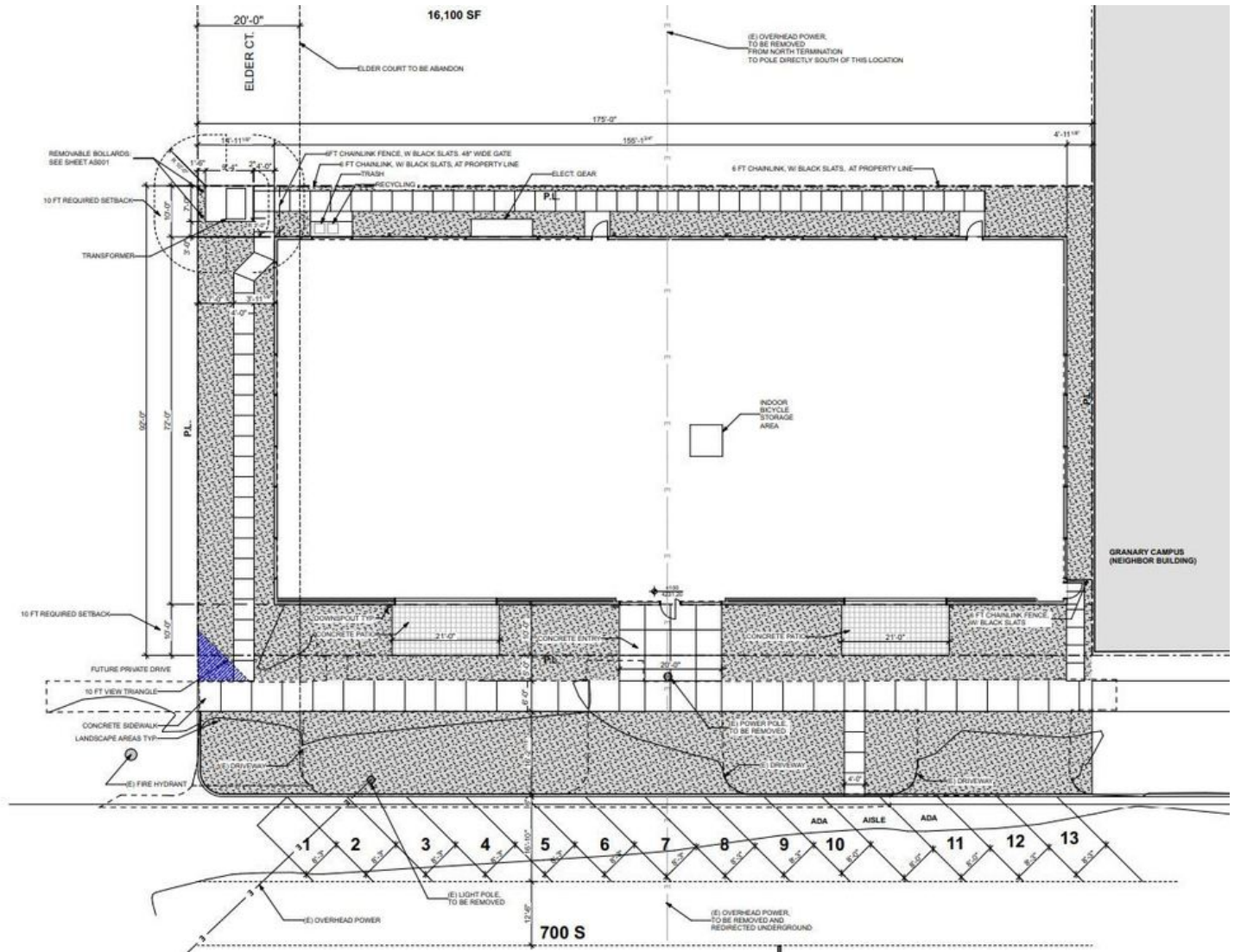
\$28.00 SF/YR (NNN)

PROPERTY DETAILS:

5,000 - 20,000 SF

MICHAEL FERRO
801.554.3002
ferro@iproperties.com

51 East 400 South Suite 210
Salt Lake City, UT 84111
801.355.0600 | iproperties.com



BOMA PLAN KEY

- TA- TENANT AREA & TENANT ANCILLARY AREA
- FSA- FLOOR SERVICE AREA
- MVP- MAJOR VERTICAL PENETRATIONS
- BSA- BUILDING SERVICE AREA



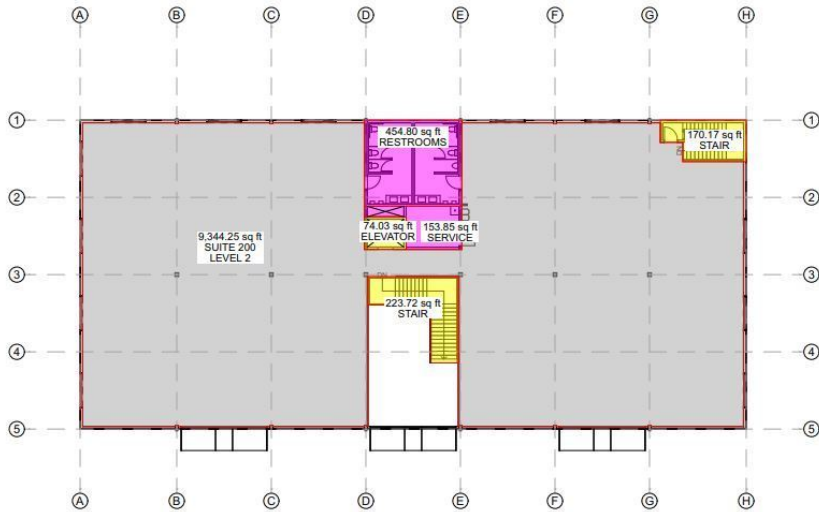
2 BOMA SECOND FLOOR PLAN 1 TENANT
SCALE: 1/16" = 1'-0"



1 BOMA MAIN FLOOR PLAN 1 TENANT
SCALE: 1/16" = 1'-0"

BOMA PLAN KEY

- TA- TENANT AREA & TENANT ANCILLARY AREA
- FSA- FLOOR SERVICE AREA
- MVP- MAJOR VERTICAL PENETRATIONS
- BSA- BUILDING SERVICE AREA



2 BOMA SECOND FLOOR PLAN 2 TENANTS
SCALE: 1/16" = 1'-0"



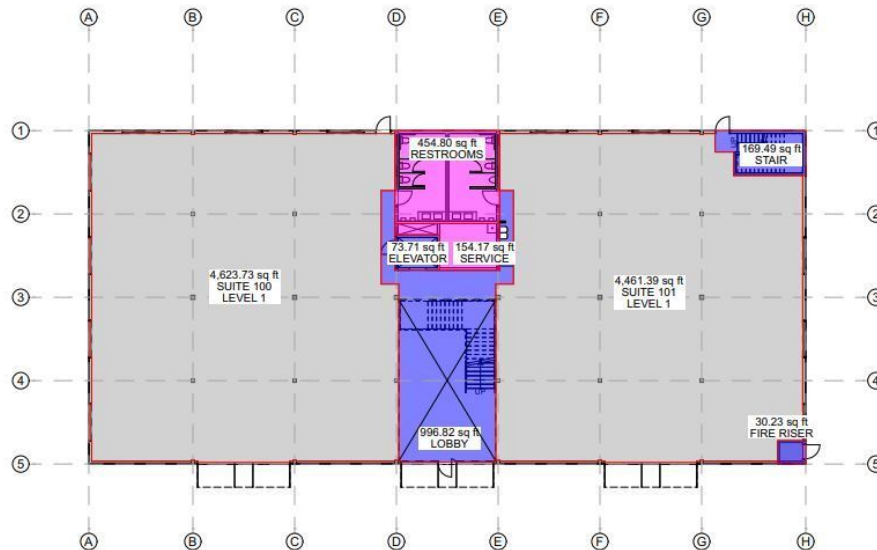
1 BOMA MAIN FLOOR PLAN 2 TENANTS
SCALE: 1/16" = 1'-0"

BOMA PLAN KEY

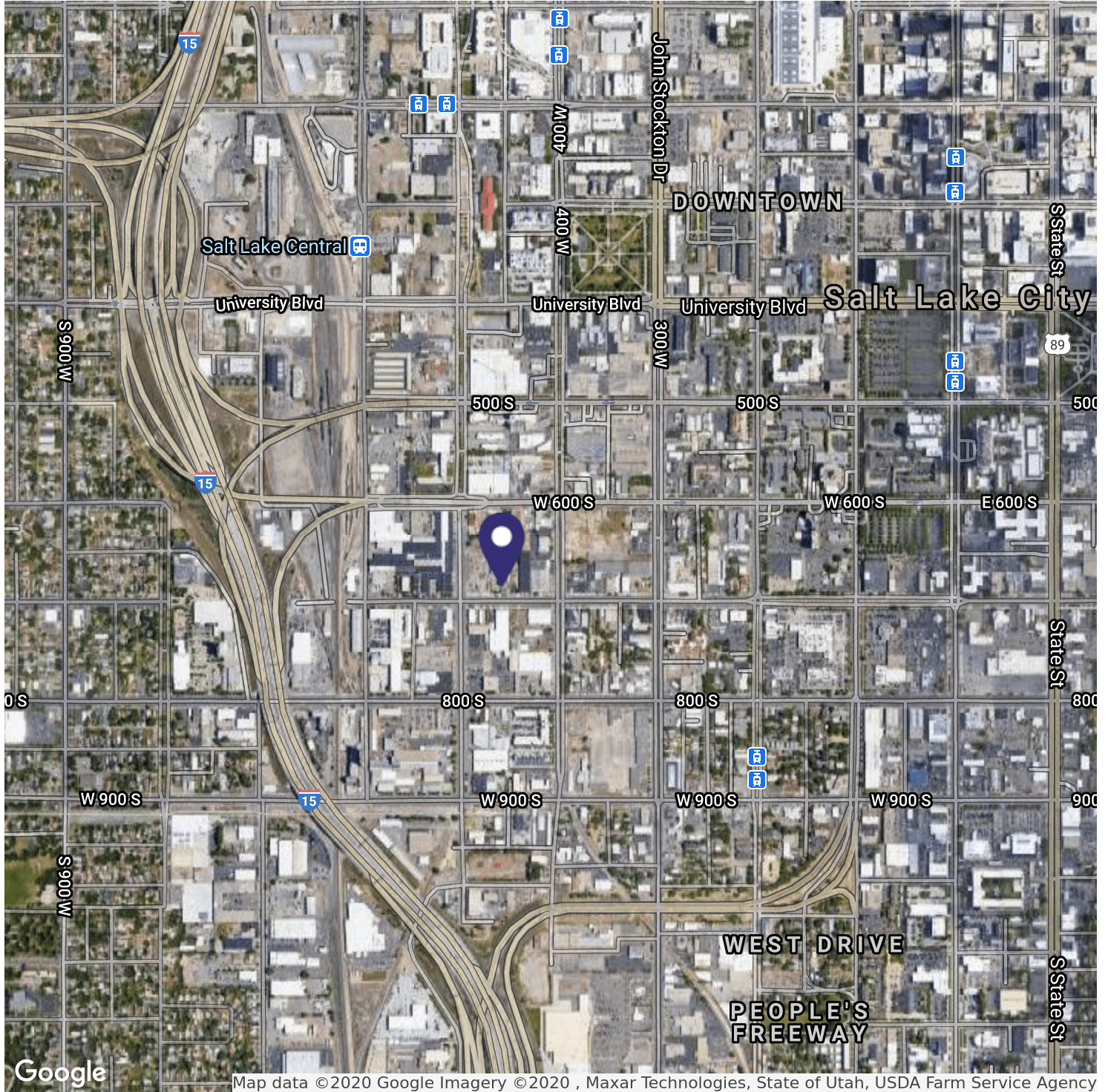
- TA- TENANT AREA & TENANT ANCILLARY
- FSA- FLOOR SERVICE AREA
- MVP- MAJOR VERTICAL PENETRATIONS
- BSA- BUILDING SERVICE AREA



2 BOMA SECOND FLOOR PLAN 4 TENANTS
SCALE: 1/16" = 1'-0"



1 BOMA MAIN FLOOR PLAN 4 TENANTS
SCALE: 1/16" = 1'-0"



MICHAEL FERRO
801.554.3002
ferro@iproperties.com

51 East 400 South Suite 210
Salt Lake City, UT 84111
801.355.0600 | iproperties.com