



## ROCKY MOUNTAIN EYE CENTER

4400 South 700 East, Murray, UT 84107

### PROPERTY DESCRIPTION :

- Located on Highly Trafficked 700 East
- Abundant Parking Ratio of 4.7 Stalls/1,000 SF
- General or Medical Office Users
- Close Proximity to I-15 and I-215 Freeway Access Points
- Well Kept Property Grounds and Common Areas
- Competitive Full Service Lease Rate (Excl. Interior Janitorial)
- T.I. Available for Qualified Tenants

### LEASE RATE:

**\$14.00 SF/YR**  
**(FULL SERVICE)**

### PROPERTY DETAILS:

**SUITE 240: 4,710 SF**

**CHRIS METOS**  
801.879.7870  
chris@iproperties.com

**JAMES BURGESS**  
801.916.5457  
james@theburgessco.com

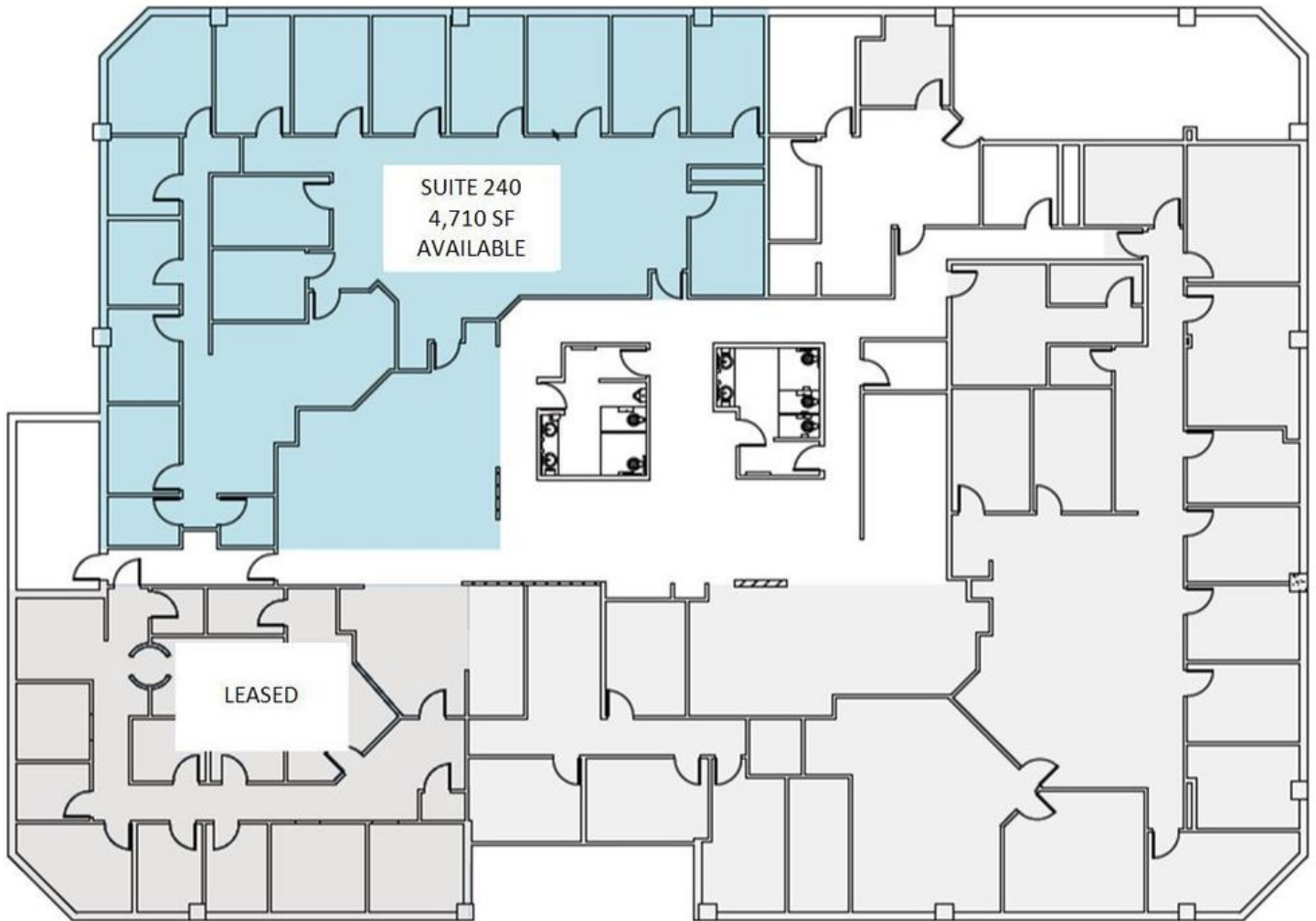
51 East 400 South Suite 210  
Salt Lake City, UT 84111  
801.355.0600 | iproperties.com



**CHRIS METOS**  
801.879.7870  
chris@iproperties.com

**JAMES BURGESS**  
801.916.5457  
james@theburgessco.com

51 East 400 South Suite 210  
Salt Lake City, UT 84111  
801.355.0600 | iproperties.com



**CHRIS METOS**    **JAMES BURGESS**  
801.879.7870    801.916.5457  
chris@ipropties.com    james@theburgessco.com

51 East 400 South Suite 210  
Salt Lake City, UT 84111  
801.355.0600 | iproperties.com



**CHRIS METOS**  
801.879.7870  
chris@iproperties.com

**JAMES BURGESS**  
801.916.5457  
james@theburgessco.com

51 East 400 South Suite 210  
Salt Lake City, UT 84111  
801.355.0600 | iproperties.com