



4849 SOUTH STATE STREET

Murray, UT 84107

PROPERTY DESCRIPTION:

- Retail or Office Space Available
- Short & Long Term Lease Options
- Good Parking
- Close to IHC Hospital
- Competitive Lease Rate
- Good Tenant Mix

LEASE RATE:

\$18.00 SF/YR (NNN)

PROPERTY DETAILS:

4,170 SF AVAILABLE

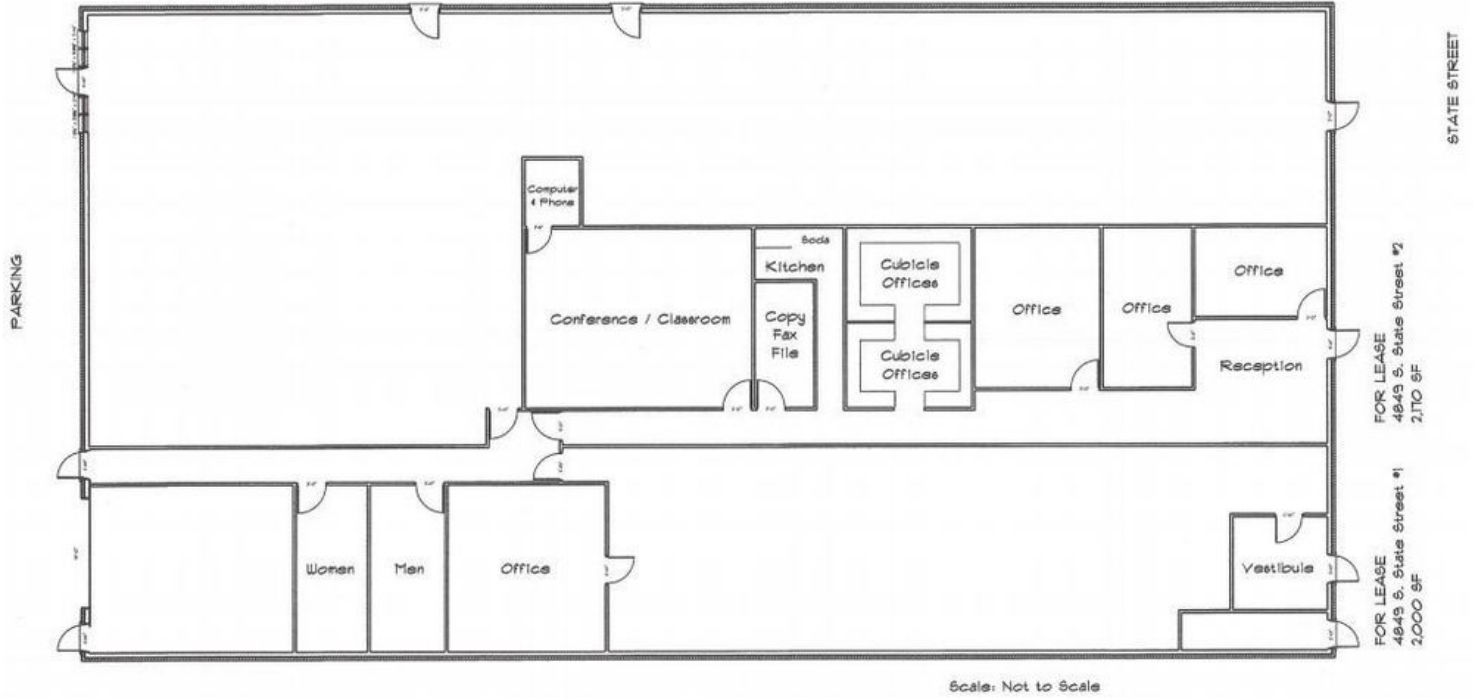
UNIT 1: 2,000 SF

UNIT 2: 2,170 SF

ERIC FUHRMAN

801.859.2862
eric@iproperties.com

51 East 400 South Suite 210
Salt Lake City, UT 84111
801.355.0600 | iproperties.com





ERIC FUHRMAN
 801.859.2862
 eric@iproperties.com

51 East 400 South Suite 210
 Salt Lake City, UT 84111
 801.355.0600 | iproperties.com