



CAMBRIDGE VILLAGE OFFICE CONDOS

1680 Reunion Ave, South Jordan, UT 84095

PROPERTY DESCRIPTION:

- Combination of Open Space and Private Offices
- Units may be Combined
- Move-In Ready Offices with High-End Finishes
- In-Unit ADA Restrooms
- Located on Busy Redwood Road
- Minutes Away from South Jordan Parkway and I-15
- Surrounded by Numerous Dining and Entertainment Options
- Short-Term Deals Only

LEASE RATE:

\$14.00 SF/YR (NNN)

PROPERTY DETAILS:

1,416 - 2,690 SF

JON WRIGHT

801.712.9833

jwright@iproperties.com

CHRISTIAN PRISKOS

801.573.8500

christian@iproperties.com

51 East 400 South Suite 210
Salt Lake City, UT 84111
801.355.0600 | iproperties.com



PROPERTY DESCRIPTION

Move-in ready offices available for lease. Short-term deals only.

SPACES	LEASE RATE	SPACE SIZE
1682 - #2 (in-unit suite)	\$14.00 SF/yr	2,690 SF
1682 - #3B	\$14.00 SF/yr	1,416 SF
1654 - #10B	\$14.00 SF/yr	1,892 SF

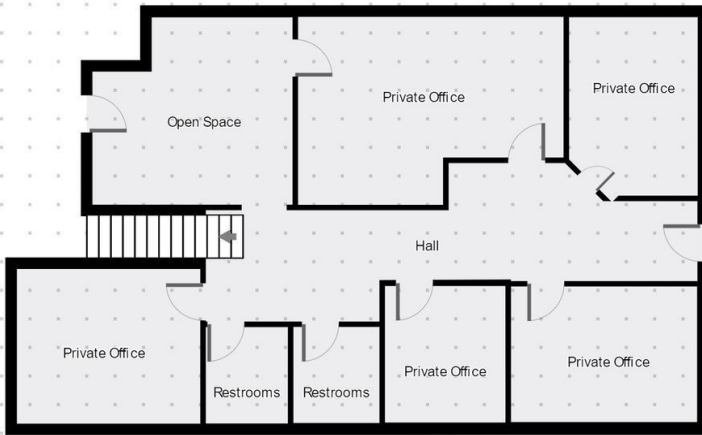
DEMOGRAPHICS	1 MILE	3 MILES	5 MILES
Total Households	2,982	23,678	76,091
Total Population	9,650	78,517	250,053
Average HH Income	\$99,895	\$88,306	\$78,466



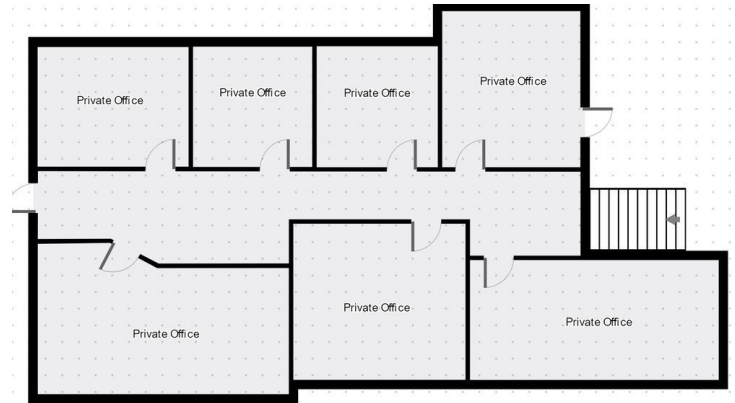
JON WRIGHT
801.712.9833
jwright@iproperties.com

CHRISTIAN PRISKOS
801.573.8500
christian@iproperties.com

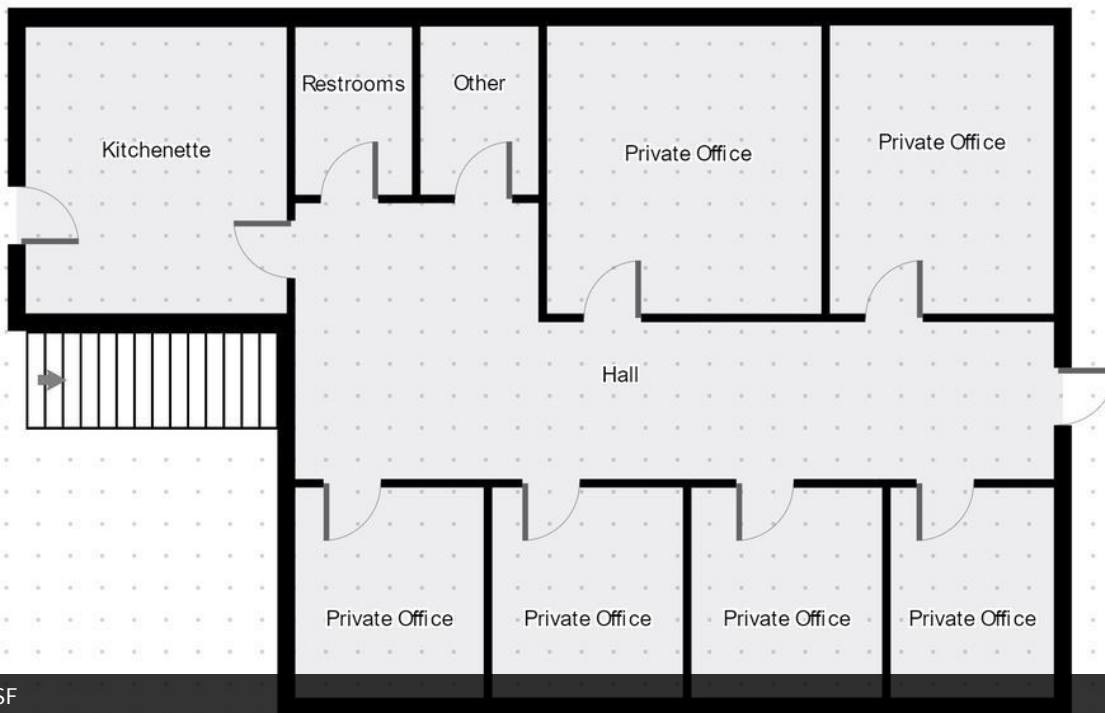
51 East 400 South Suite 210
Salt Lake City, UT 84111
801.355.0600 | iproperties.com



Suite 2A-1: *Combined Total with 2A-2: 2,690 SF



Suite 2A-2

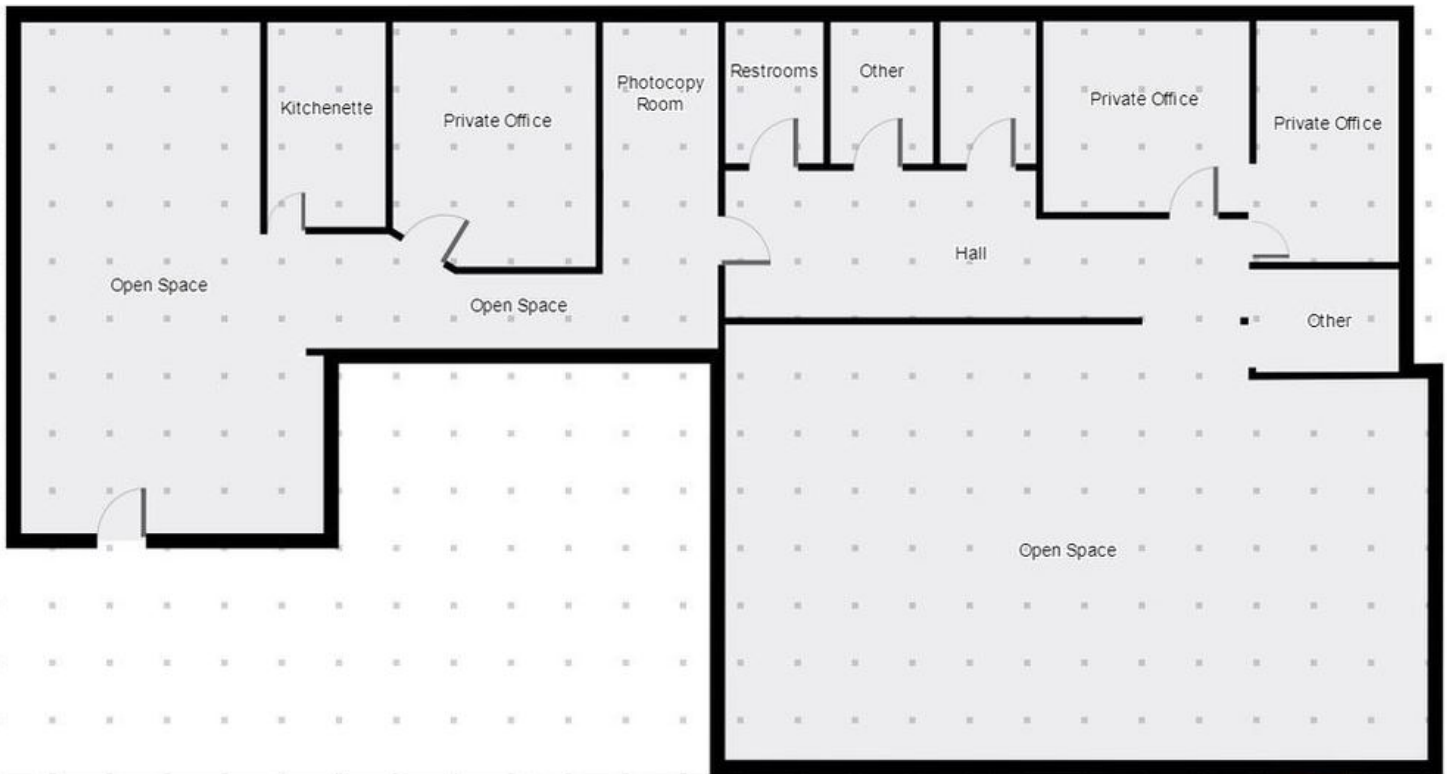


Suite 3B: 1,416 SF

JON WRIGHT
801.712.9833
jwright@iproperties.com

CHRISTIAN PRISKOS
801.573.8500
christian@iproperties.com

51 East 400 South Suite 210
Salt Lake City, UT 84111
801.355.0600 | iproperties.com

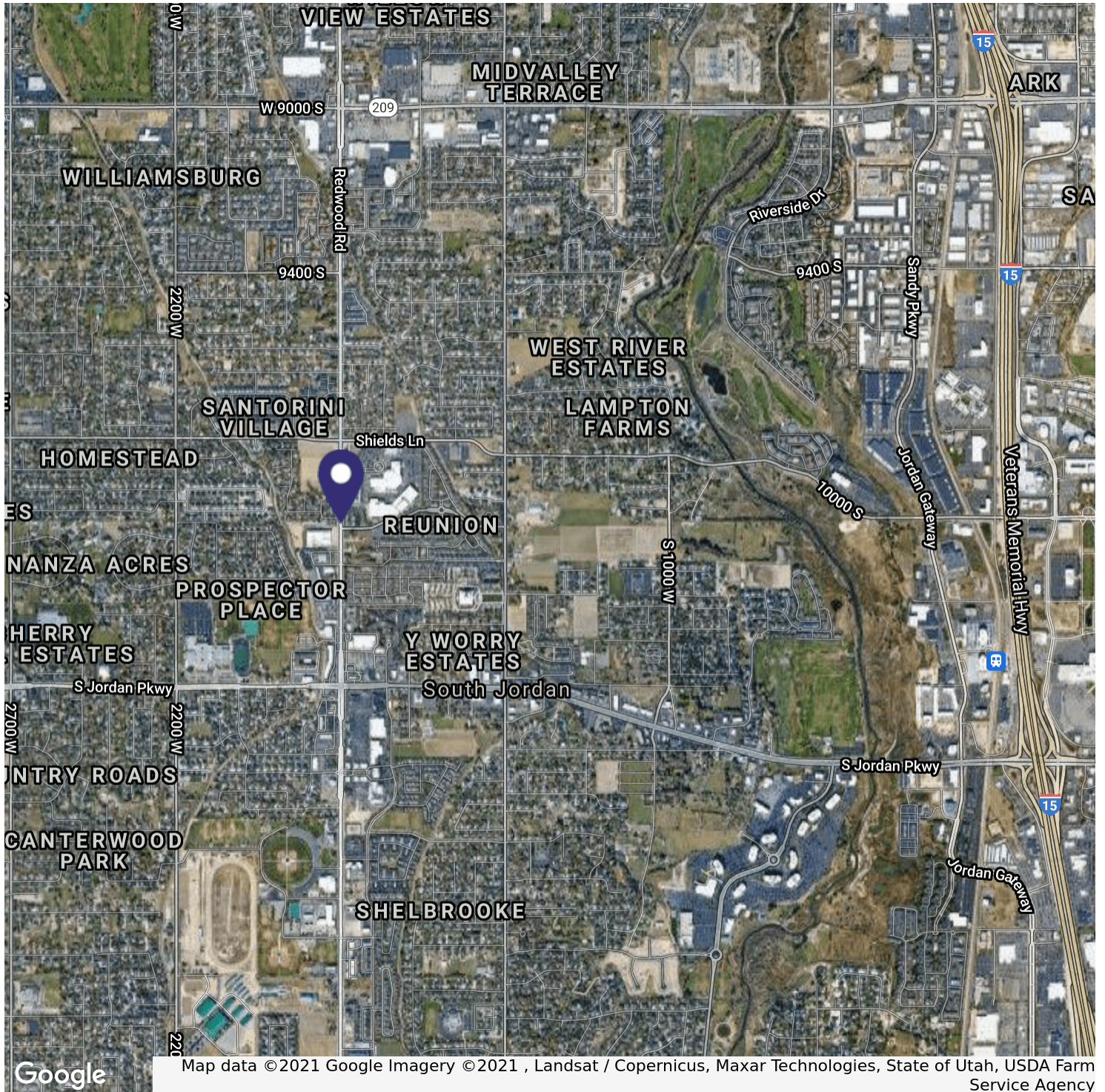


Suite 10B: 1,892 SF

JON WRIGHT
801.712.9833
jwright@iproperties.com

CHRISTIAN PRISKOS
801.573.8500
christian@iproperties.com

51 East 400 South Suite 210
Salt Lake City, UT 84111
801.355.0600 | iproperties.com



JON WRIGHT
801.712.9833
jwright@iproperties.com

CHRISTIAN PRISKOS
801.573.8500
christian@iproperties.com

51 East 400 South Suite 210
Salt Lake City, UT 84111
801.355.0600 | iproperties.com