

LAST SUITE REMAINING

For Lease
±1,200 SF
Retail Suites

Available



Leesburg Village Shopping Center

2900 Leesburg Road - Columbia, South Carolina

Property Features

- ±50,574 SF shopping center anchored by a Food Lion
- Two suites available for lease:
 - Suite 60: ±1,200 SF
- Conveniently located near I-77, Weston Lake, and Fort Jackson
- Lease Rate: \$11.00 per SF, NNN (\$3.87)



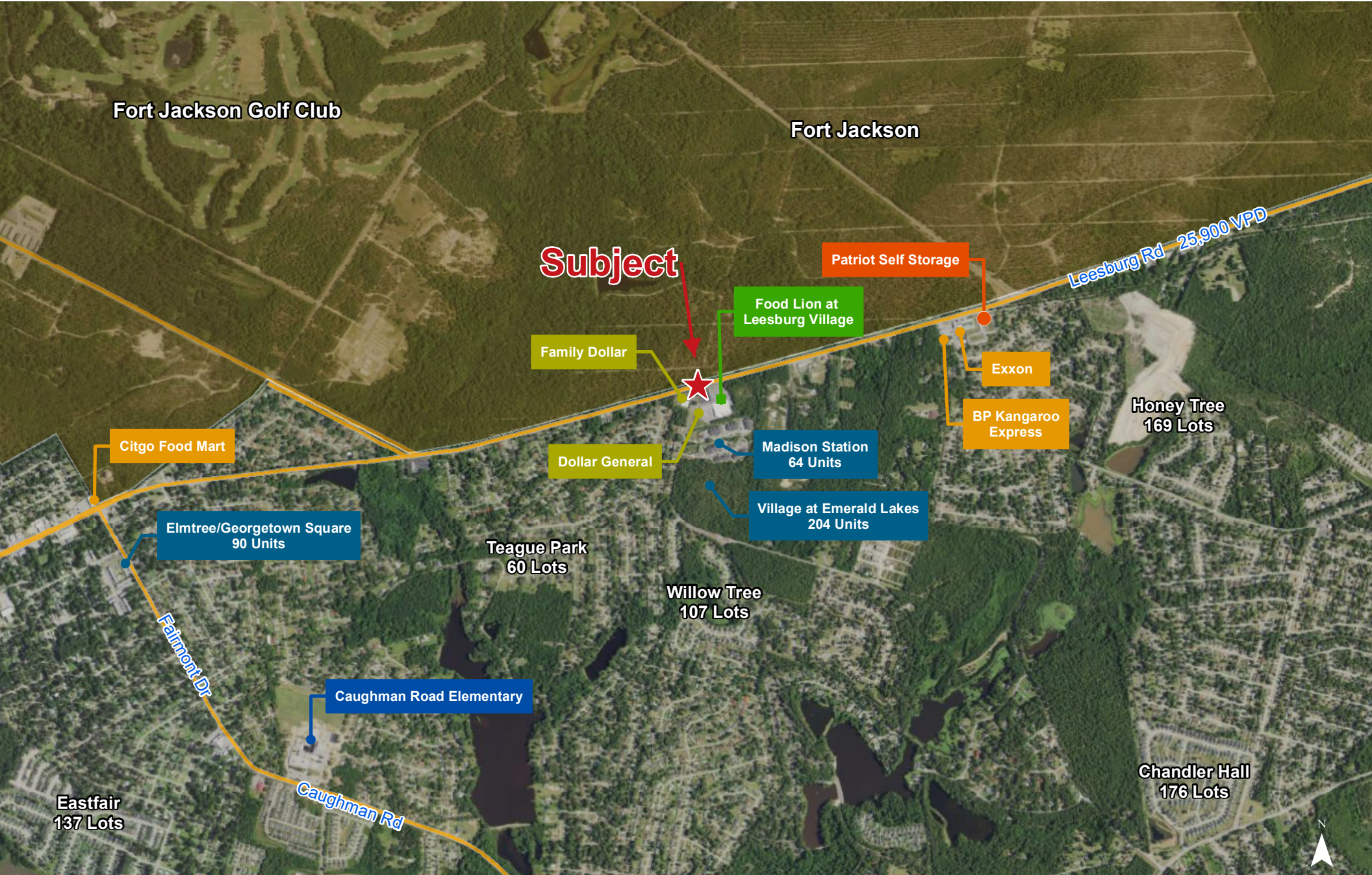
Patrick Palmer, CCIM
+1 803 556 3340
ppalmer@naicolumbia.com

Bobby Balboni
+1 803 744 9846
bbalboni@naicolumbia.com

NAIColumbia

807 Gervais Street, Suite 200
Columbia, South Carolina 29201
+1 803.254.0100
www.naicolumbia.com





Map Updated: Wednesday, September 23, 2020. This information submitted is not guaranteed. Although obtained from reliable sources, all information should be confirmed prior to use or reliance upon the information. This document may not be reproduced in whole or in part without the express written consent of NAI Avant.

NAI Columbia

Demographic Profile

Demographic Profile

2900 Leesburg Rd | Columbia, South Carolina

	1 Mile	3 Miles	5 Miles		1 Mile	3 Miles	5 Miles		1 Mile	3 Miles	5 Miles
Population				2020 Age Dist.				Median Household Income			
2010 Census	3,627	26,453	69,171	0 - 4	6.3%	7.1%	5.4%	2020 Estimate	\$53,870	\$51,664	\$53,851
2020 Estimate	3,994	28,999	73,243	5 - 9	6.7%	7.1%	5.4%	2025 Projection	\$55,326	\$53,898	\$56,588
2025 Projection	4,216	30,375	75,938	10 - 14	7.1%	6.8%	5.4%				
% Chg. 2020-2025	5.6%	4.7%	3.7%	15 - 19	5.9%	6.7%	9.2%	Average Household Income			
				20 - 24	5.1%	8.5%	12.8%	2020 Estimate	\$66,496	\$67,762	\$80,266
Households				25 - 34	12.8%	16.5%	16.6%	2025 Projection	\$72,035	\$74,458	\$88,367
2010 Census	1,380	9,998	23,597	35 - 44	13.2%	13.4%	12.0%				
2020 Estimate	1,507	10,929	25,224	45 - 54	11.6%	10.5%	9.5%	Per Capita Household Income			
2025 Projection	1,587	11,457	26,321	55 - 64	14.3%	11.3%	10.7%	2020 Estimate	\$25,528	\$26,008	\$29,796
				65 - 74	10.6%	7.6%	7.9%	2025 Projection	\$27,603	\$28,534	\$32,686
Families				75 - 84	4.9%	3.5%	3.6%				
2010 Census	993	6,727	14,751	85+	1.3%	1.2%	1.5%	2020 Household Income Dist.			
2020 Estimate	1,062	7,151	15,308					Less than \$15,000	5.2%	9.5%	10.1%
2025 Projection	1,111	7,434	15,824	Median Age				\$15,000 - \$24,999	11.2%	10.0%	9.1%
				2010 Census	37.0	31.6	29.8	\$25,000 - \$34,999	8.4%	10.9%	10.4%
2020 Housing Data				2020 Estimate	39.0	33.4	31.8	\$35,000 - \$49,999	18.4%	17.1%	15.7%
Owner Occ. Housing Units	1,122	6,496	14,577	2025 Projection	40.4	33.4	32.2	\$50,000 - \$74,999	28.2%	24.0%	20.6%
Renter Occ. Housing Units	385	4,433	10,647					\$75,000 - \$99,999	11.3%	11.6%	10.9%
				Average Household Size				\$100,000 - \$149,999	12.5%	9.8%	11.0%
2020 Business Data				2010 Census	2.63	2.54	2.40	\$150,000 - \$199,999	3.1%	3.8%	5.5%
Total Businesses:	196	6,327	21,912	2020 Estimate	2.65	2.56	2.42	\$200,000 and Up	1.6%	3.2%	6.5%
Total Employees:	3,994	28,999	73,243	2025 Projection	2.65	2.56	2.42				