

For Lease

±1,200-8,700 SF

Retail/Office Space



Available Available Available



For more information:

Garden Place Plaza

7380 Two Notch Road - Columbia, South Carolina

Patrick Palmer, CCIM
+1 803 556 3340
ppalmer@naicolumbia.com

Bobby Balboni
+1 803 744 9846
bbalboni@naicolumbia.com



THE INFORMATION CONTAINED HEREIN HAS BEEN GIVEN TO US BY THE OWNER OF THE PROPERTY OR OTHER SOURCES WE DEEM RELIABLE. WE HAVE NO REASON TO DOUBT ITS ACCURACY, BUT WE DO NOT GUARANTEE IT. ALL INFORMATION SHOULD BE VERIFIED PRIOR TO PURCHASE OR LEASE.

807 Gervais Street, Suite 200
Columbia, South Carolina 29201
+1 803.254.0100
www.naicolumbia.com

For Lease

±1,200-8,700 SF

Retail/Office Space



Property Features

7380 Two Notch Road - Columbia, South Carolina

- Two retail suites available in Garden Place Plaza in Columbia, SC
- Garden Place Plaza tenants include Direct General Insurance, Barber Shop and Kim Enterprise
- Located on US Highway #1 (Two Notch Road) between I-20 and Columbia Place Mall
- 2019 Traffic Count: 18,200 VPD (Station 109)

- Suite 7380:
 - ±8,700 SF
 - Available immediately
 - Lease Rate: \$8.00 PSF
 - Cam, Taxes, Ins., Water & Sewer: \$3.00 PSF
- Suite 7382:
 - ±1,200 SF
 - Available Immediately
 - Lease Rate: \$14.00 PSF
 - Cam, Taxes, Ins., Water & Sewer: \$3.00 PSF
- Suite 7384:
 - ±1,800 SF
 - Available Immediately
 - Lease Rate: \$14.00 PSF
 - Cam, Taxes, Ins., Water & Sewer: \$3.00 PSF

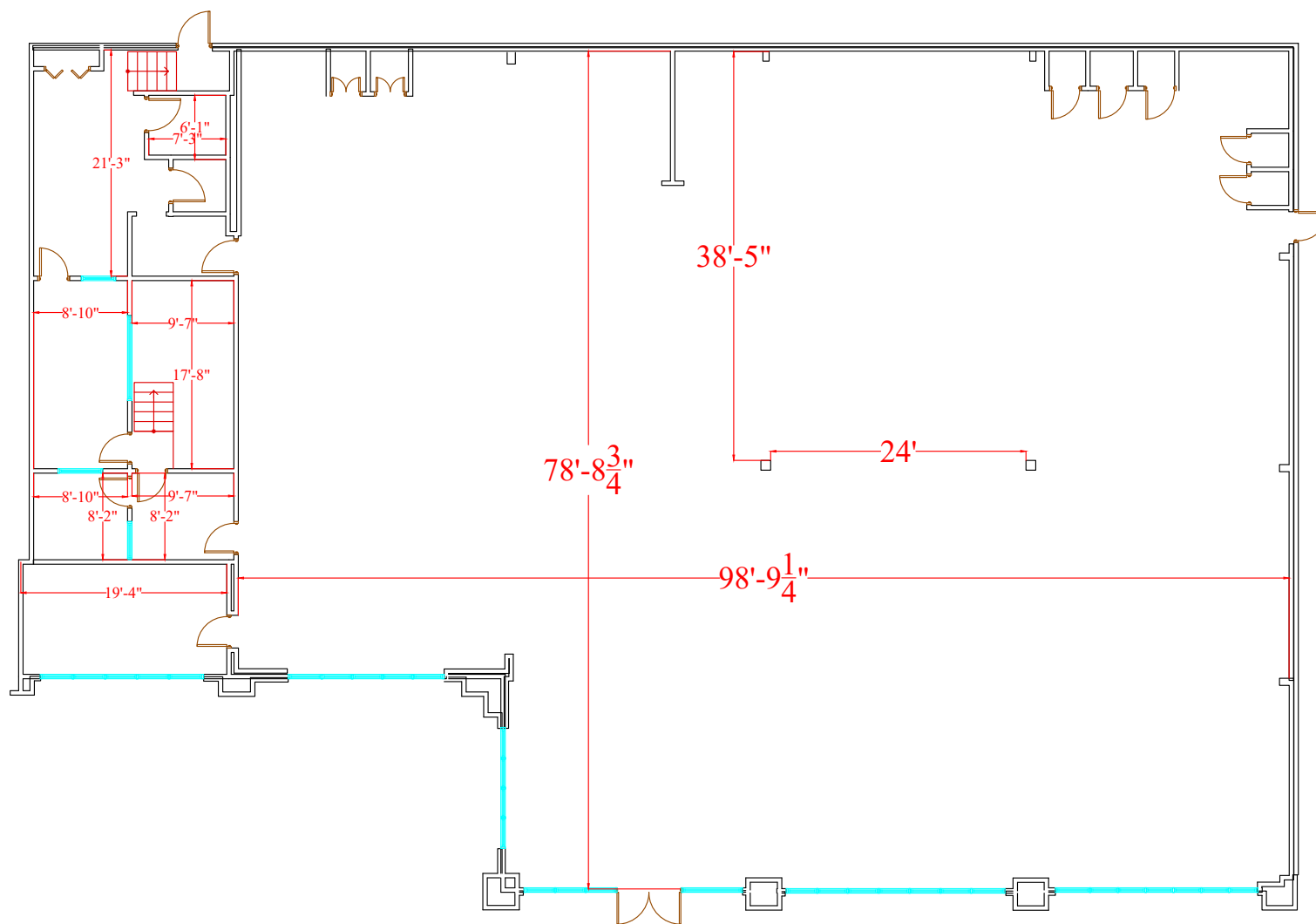
Suite 7380

7380 Two Notch Road - Columbia, South Carolina

For Lease

±1,200-8,700 SF

Retail/Office Space



NAI Columbia

Demographic Profile

Demographic Profile

Trenholm Road Ext & O'Neil Ct | Columbia, South Carolina

	1 Mile	3 Miles	5 Miles		1 Mile	3 Miles	5 Miles		1 Mile	3 Miles	5 Miles
Population				2020 Age Dist.				Median Household Income			
2010 Census	6,979	45,170	113,225	0 - 4	7.1%	6.2%	5.8%	2020 Estimate	\$37,922	\$47,249	\$50,208
2020 Estimate	7,799	48,176	122,063	5 - 9	6.6%	6.0%	5.6%	2025 Projection	\$40,176	\$50,497	\$52,815
2025 Projection	8,143	50,331	127,568	10 - 14	6.2%	6.1%	5.6%				
% Chg. 2020-2025	4.4%	4.5%	4.5%	15 - 19	5.7%	5.7%	7.9%	Average Household Income			
				20 - 24	8.4%	7.0%	10.3%	2020 Estimate	\$53,585	\$64,042	\$72,426
Households				25 - 34	17.5%	14.6%	14.6%	2025 Projection	\$57,335	\$69,616	\$79,438
2010 Census	2,962	18,610	41,959	35 - 44	13.6%	13.0%	11.8%				
2020 Estimate	3,263	19,712	45,335	45 - 54	10.9%	11.2%	10.4%	Per Capita Household Income			
2025 Projection	3,395	20,593	47,584	55 - 64	10.5%	12.2%	11.5%	2020 Estimate	\$22,083	\$26,271	\$28,101
				65 - 74	7.8%	9.9%	9.4%	2025 Projection	\$23,546	\$28,547	\$30,757
Families				75 - 84	3.9%	5.3%	4.8%				
2010 Census	1,775	11,684	26,441	85+	2.0%	2.6%	2.3%	2020 Household Income Dist.			
2020 Estimate	1,907	12,030	27,844					Less than \$15,000	10.8%	11.7%	13.3%
2025 Projection	1,965	12,453	28,969	Median Age				\$15,000 - \$24,999	14.5%	11.8%	10.2%
				2010 Census	32.2	36.9	33.3	\$25,000 - \$34,999	21.1%	13.5%	11.8%
2020 Housing Data				2020 Estimate	34.2	38.2	35.2	\$35,000 - \$49,999	13.9%	15.1%	14.4%
Owner Occ. Housing Units	1,083	10,164	24,701	2025 Projection	34.3	38.5	35.7	\$50,000 - \$74,999	19.3%	21.2%	19.2%
Renter Occ. Housing Units	2,180	9,548	20,634					\$75,000 - \$99,999	10.6%	11.3%	11.7%
				Average Household Size				\$100,000 - \$149,999	6.2%	9.4%	9.9%
2020 Business Data				2010 Census	2.33	2.37	2.38	\$150,000 - \$199,999	1.9%	2.8%	4.6%
Total Businesses:	5,037	22,760	44,520	2020 Estimate	2.37	2.39	2.40	\$200,000 and Up	1.5%	3.2%	5.0%
Total Employees:	7,799	48,176	122,063	2025 Projection	2.38	2.39	2.40				