

FOR LEASE

1812 ROCHESTER ROAD



1812 ROCHESTER ROAD ROCHESTER HILLS, MI 48307

PROPERTY HIGHLIGHTS:

- +/-14,000 SF office/medical building located on Rochester Road just north of Hamlin in Rochester Hills
- Outstanding visibility from Rochester Road
- 50+ private parking spaces
- Close proximity to M-59 and I-75
- 3,104 SF of general office, available immediately
- Lease Rate: Medical: \$19/NNN
- General Office: \$17/Gross

The information provided herein along with any attachment(s) was obtained from sources believed to be reliable, however, Friedman Real Estate makes no guarantees, warranties, or representations as to the completeness or accuracy of such information and legal counsel is advised. All information provided is subject to verification and no liability for reliance on such information or errors or omissions is assumed. The presentation of this property is submitted subject to errors, omissions, change of price or conditions, prior sale or lease, or withdrawal without notice. Copyright © 2021 Friedman Real Estate. All rights reserved.

FOR MORE INFORMATION PLEASE CONTACT:



ROBERT HIBBERT
robert.hibbert@freg.com



TODD HAWLEY
todd.hawley@freg.com

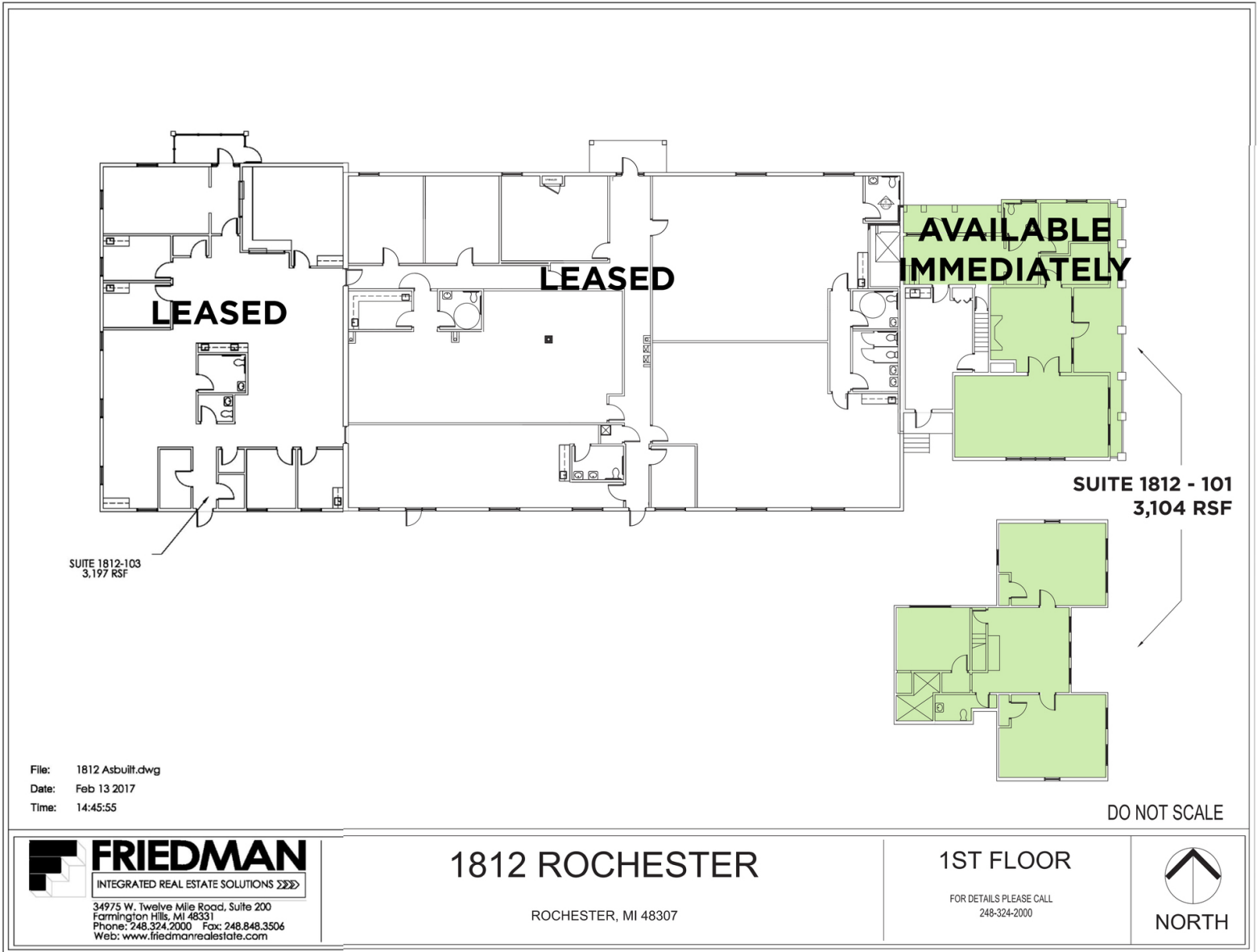
248.324.2000

eCODE 435



1812 ROCHESTER ROAD

PROPERTY FLOOR PLAN



1812 ROCHESTER ROAD UTILITY PLAN

