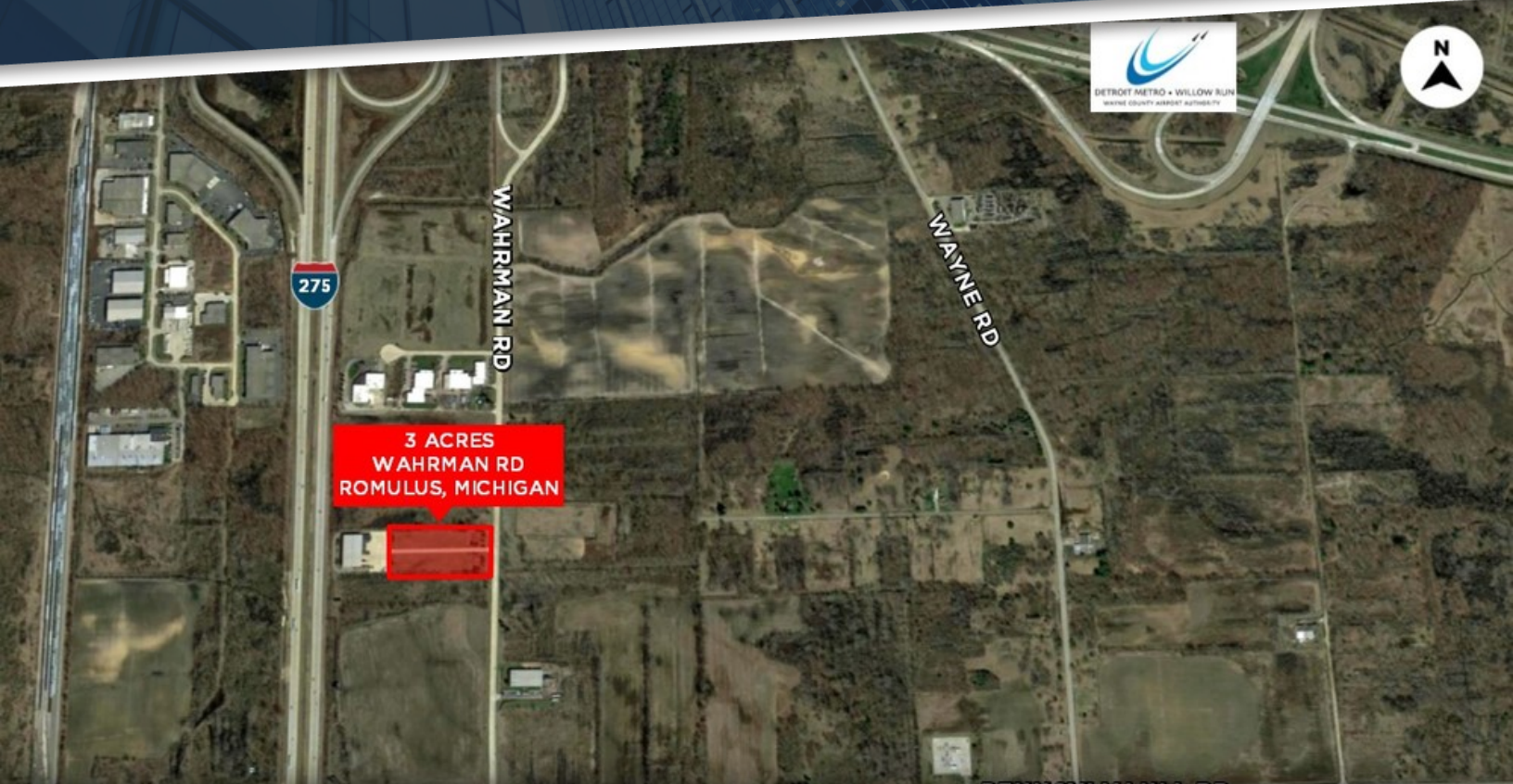


FOR LEASE

WAHRMAN RD BUILD-TO-SUIT



3 ACRES WAHRMAN ROAD ROMULUS, MI 48174

PROPERTY HIGHLIGHTS:

- Airport district build to suit opportunity
- Up to 25,000 SF possible on 3 acres
- Easy access to I-275 and I-94
- M-1 zoning
- Utilities available at site
- Lease rate T.B.D. – contact broker

The information provided herein along with any attachment(s) was obtained from sources believed to be reliable, however, Friedman Real Estate makes no guarantees, warranties, or representations as to the completeness or accuracy of such information and legal counsel is advised. All information provided is subject to verification and no liability for reliance on such information or errors or omissions is assumed. The presentation of this property is submitted subject to errors, omissions, change of price or conditions, prior sale or lease, or withdrawal without notice. Copyright © 2021 Friedman Real Estate. All rights reserved.

FOR MORE INFORMATION PLEASE CONTACT:



GREG HORNBY
greg.hornby@freg.com

248.324.2000

eCODE **774**

