

# FOR SALE/LEASE

## WOODBURY OFFICE PARK



### 32811-32813 MIDDLEBELT ROAD FARMINGTON HILLS, MI 48334

#### PROPERTY HIGHLIGHTS:

- 17,200 SF office building (8,600 1st Floor / 8,600 Lower Level)
- Excellent owner-user investment opportunity
- Fully leased to 9 national and local tenants
- Owner-user suite available on 1st floor - 2,500 SF
- Staggered lease expirations through 2023
- Ideal for professional, general business, and medical office uses
- Strong historical occupancy
- New parking lot
- Easy access to M-10, M-24, and I-696
- Possible 13% Cash-on-Cash return
- Sale Price: \$1,050,000

The information provided herein along with any attachment(s) was obtained from sources believed to be reliable, however, Friedman Real Estate makes no guarantees, warranties, or representations as to the completeness or accuracy of such information and legal counsel is advised. All information provided is subject to verification and no liability for reliance on such information or errors or omissions is assumed. The presentation of this property is submitted subject to errors, omissions, change of price or conditions, prior sale or lease, or withdrawal without notice. Copyright © 2021 Friedman Real Estate. All rights reserved.

#### FOR MORE INFORMATION PLEASE CONTACT:



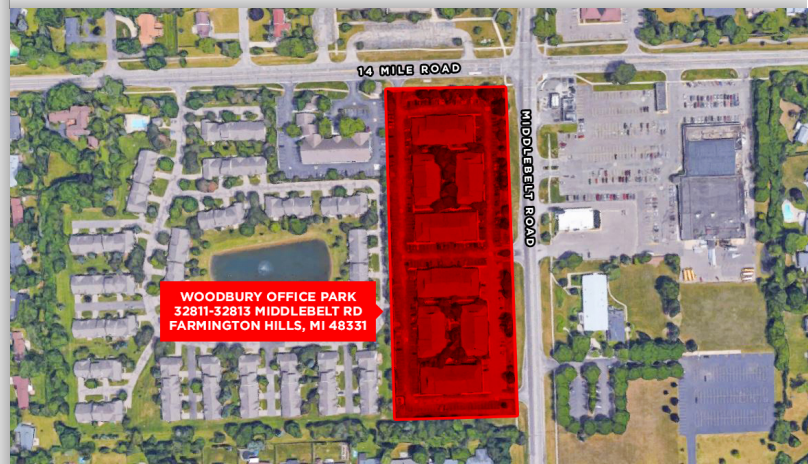
**ANDREW BOWER**  
[andrew.bower@freg.com](mailto:andrew.bower@freg.com)



**STEVE EISENSHTADT**  
[steve.eisenshtadt@freg.com](mailto:steve.eisenshtadt@freg.com)

**248.324.2000**

**eCODE 265**



# WOODBURY OFFICE PARK PROPERTY PHOTOS



# WOODBURY OFFICE PARK PROPERTY PHOTOS

