

MEDICAL / OFFICE SPACE AVAILABLE

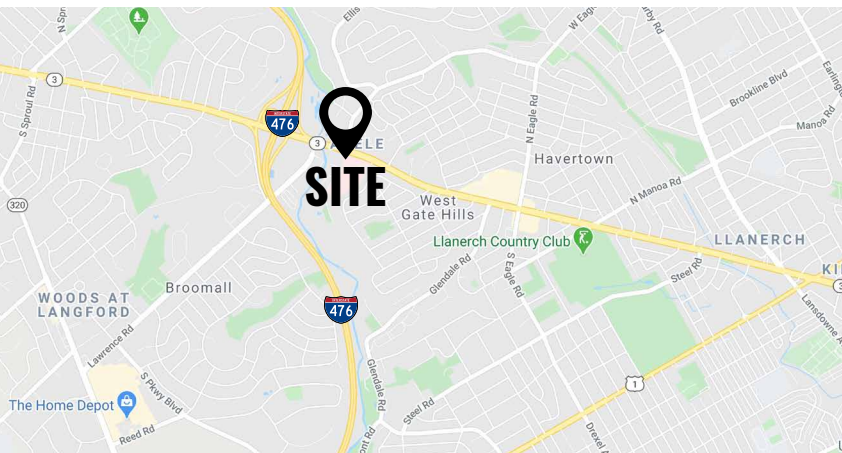
2050 West Chester Pike | Havertown, PA 19083 | Delaware County

FOR LEASE

\$24 PSF

PROPERTY FEATURES

- ✓ Institutional medical ownership and management
- ✓ Flexible lease terms
- ✓ Tenant improvement allowances available
- ✓ ±2,385 SF Medical / Office Space Available
- ✓ Abundant parking
- ✓ Elevator served (direct to unit)
- ✓ Strong Traffic Counts: ±47,000 VPD (West Chester Pike)
- ✓ Direct access off of West Chester Pike
- ✓ Conveniently located to Blue Route (I-476)
- ✓ Public transportation on-site



CONTACT US

SCOTT MCCABE

Phone: 610.359.1100

Cell: 610.357.8564

Email: smccabe@zmcre.com


ZOMMICK MCMAHON
COMMERCIAL REAL ESTATE

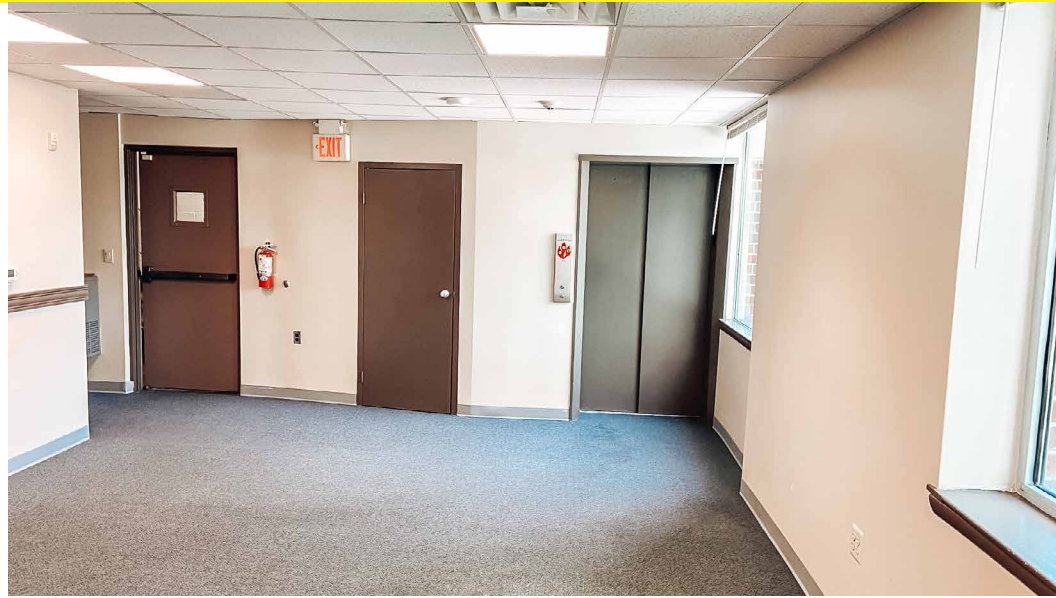
1306 Wilmington Pike, Suite A-2

West Chester, PA 19382

610.359.1100

www.zmcre.com

PROPERTY PHOTOS: 2050 WEST CHESTER PIKE, HAVERTOWN, PA 19083



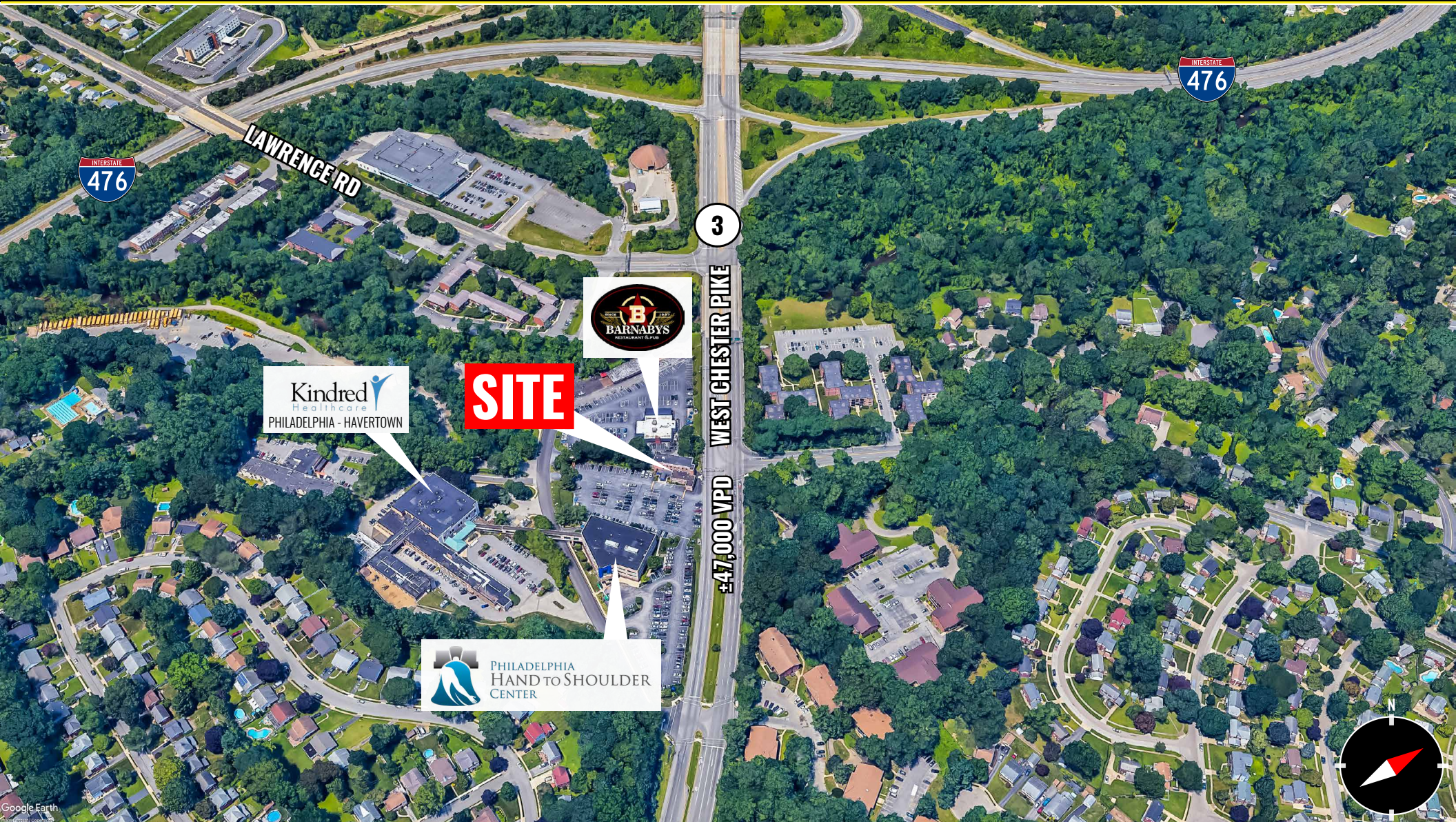

ZOMMICK MCMAHON
COMMERCIAL REAL ESTATE

CONTACT US

SCOTT MCCABE
Phone: 610.359.1100
Cell: 610.357.8564
Email: smccabe@zmcre.com

1306 Wilmington Pike, Suite A-2
West Chester, PA 19382
610.359.1100
www.zmcre.com

HAVERTOWN SITE AERIAL: 2050 WEST CHESTER PIKE, HAVERTOWN, PA 19083



CONTACT US

SCOTT MCCABE

Phone: 610.359.1100

Cell: 610.357.8564

Email: smccabe@zmcre.com


ZOMMICK MCMAHON
COMMERCIAL REAL ESTATE

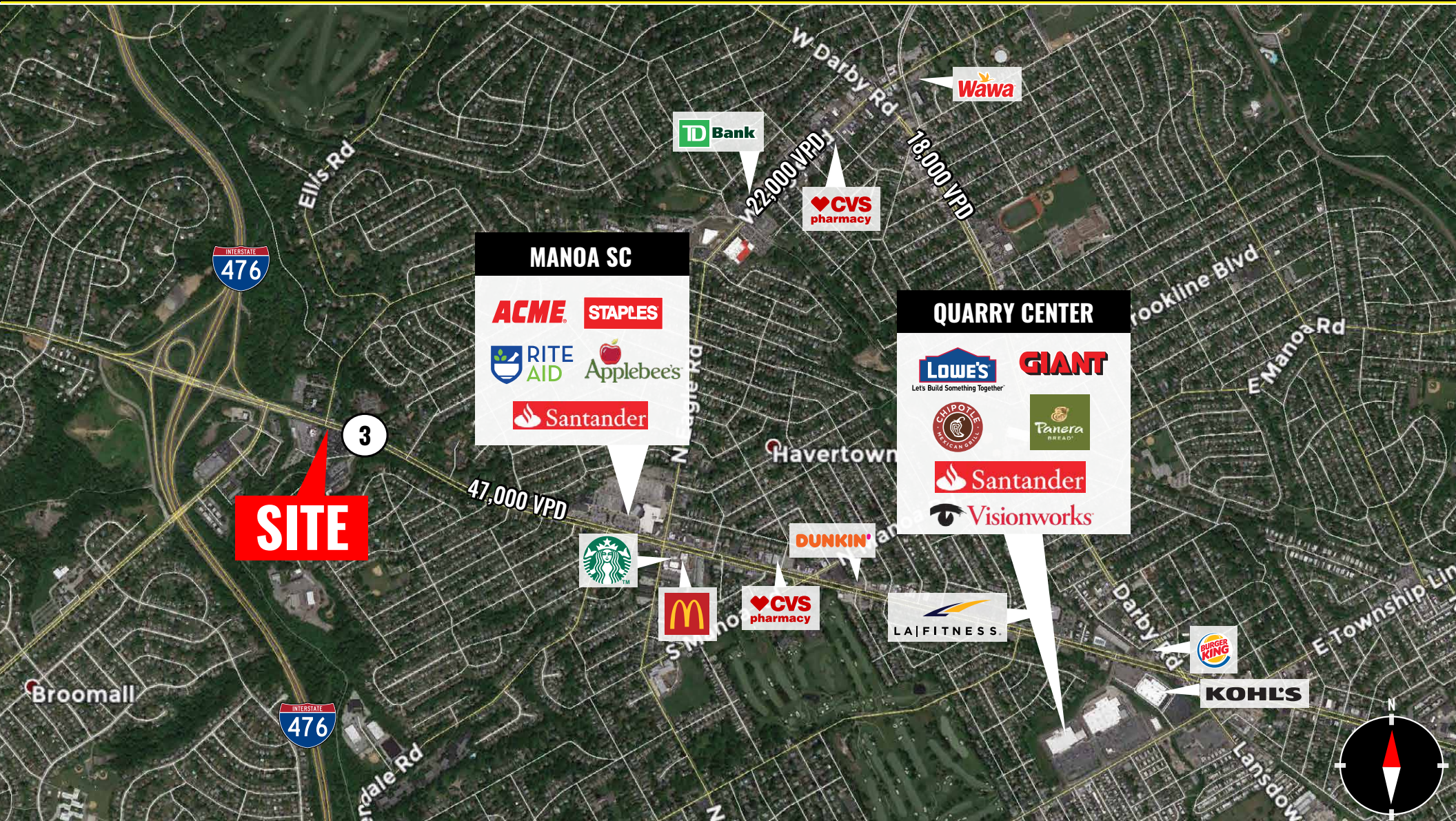
1306 Wilmington Pike, Suite A-2

West Chester, PA 19382

610.359.1100

www.zmcre.com

HAVERTOWN MARKET AERIAL: 2050 WEST CHESTER PIKE, HAVERTOWN, PA 19083



ZOMMICK MCMAHON
COMMERCIAL REAL ESTATE

CONTACT US

SCOTT MCCABE

Phone: 610.359.1100

Cell: 610.357.8564

Email: smccabe@zmcre.com

1306 Wilmington Pike, Suite A-2

West Chester, PA 19382

610.359.1100

www.zmcre.com

ABOUT ZOMMICK McMAHON COMMERCIAL REAL ESTATE

Zommick McMahon Commercial Real Estate, Inc. has been a Metro Philadelphia Area staple since its inception in 1949. The Company was founded by Joseph Zommick, and continues today with Ryan McMahon and his highly experienced staff, whom are all results-oriented professionals.

SOME OF OUR SATISFIED CLIENTS:



IRON HILL
BREWERY & RESTAURANT



CONTACT US

SCOTT MCCABE

Phone: 610.359.1100

Cell: 610.357.8564

Email: smccabe@zmcre.com

1306 Wilmington Pike, Suite A-2

West Chester, PA 19382

610.359.1100

www.zmcre.com

