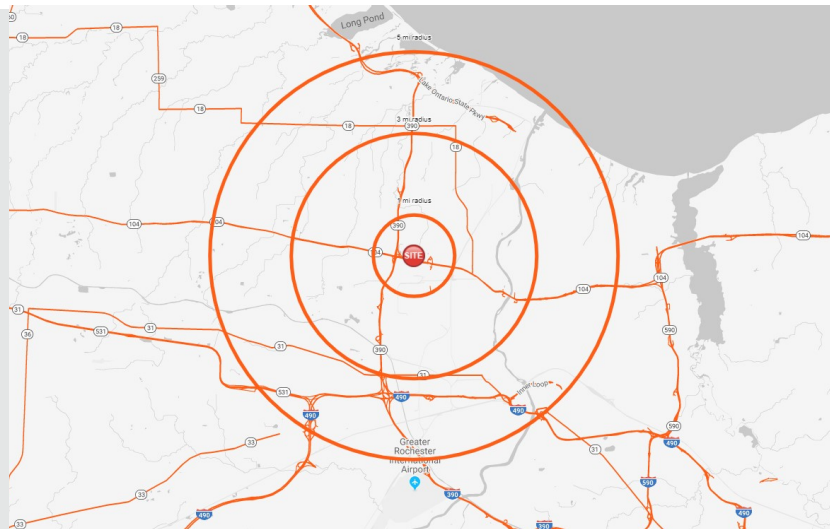




FOR LEASE: 11,100 SF
-8,100 SF. SHOWROOM & 3,000 SF. STORAGE

PROPERTY HIGHLIGHTS:

- PRIME LOCATION IN GREECE, NY'S RETAIL CORRIDOR
- HIGH TRAFFIC COUNTS 39,785 VPD
- SIGNALIZED INTERSECTION WITH MULTIPLE POINTS OF INGRESS/EGRESS



NEARBY TENANTS:



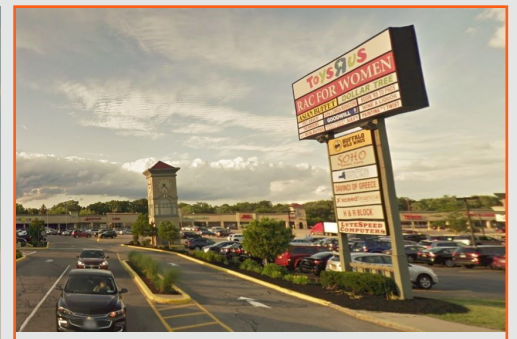
	1 MILE	3 MILES	5 MILES
POPULATION	10,711	100,119	259,330
MEDIAN HH INCOME	\$58,328	\$60,100	\$59,477
DAYTIME POPULATION	5,418	50,353	160,046

MARC QUERCIA, LICENSED REAL ESTATE SALESPERSON
O: 585.454.4500 X 115
M: 585.509.0632
MQUERCIA@CALIBERBROKERAGE.COM

1657 EAST AVENUE ROCHESTER, NY 14610
585.454.4500

WWW.CALIBERBROKERAGE.COM





MARC QUERCIA
O: 585.454.4500 X 115
M: 585.509.0632
MQUERCIA@CALIBERBROKERAGE.COM

1657 EAST AVENUE ROCHESTER, NY 14610
585.454.4500

WWW.CALIBERBROKERAGE.COM

