



FOR SALE – BANK OWNED FREESTANDING INDUSTRIAL BUILDING

335 Hubbard St, Mount Clemens, MI



LANDMARK
COMMERCIAL ▲ REAL ESTATE ▲ SERVICES

CONTACT US

27995 Halsted Road, Suite 150
Farmington Hills, MI 48331

Phone: (248) 488-2620

landmarkcres.com

ANTHONY J. VITALE

Associate
avitale@landmarkcres.com
(248) 488-2620

LOUIS J. CIOTTI

Associate Broker
lcioti@landmarkcres.com
(248) 488-2620

FOR SALE

PROPERTY DETAILS

Location: 335 Hubbard St, Mount Clemens, MI

Property Type: Freestanding Building

Sales Price: \$349,000.00

Property Taxes: \$13,873.80

Building Size: 13,196 SF

Lot Size: 0.71 acres

Zoning: I-1 Light Industrial

Anthony J. Vitale
avitale@landmarkcres.com

Contact: Louis J. Ciotti
lcotti@landmarkcres.com

(248) 488-2620

DESCRIPTION

Bank Owned Industrial Building located on the Southwest Corner of Hubbard St and N. Rose St just East of N. Groesbeck Hwy in Mount Clemens, MI.

The building offers:

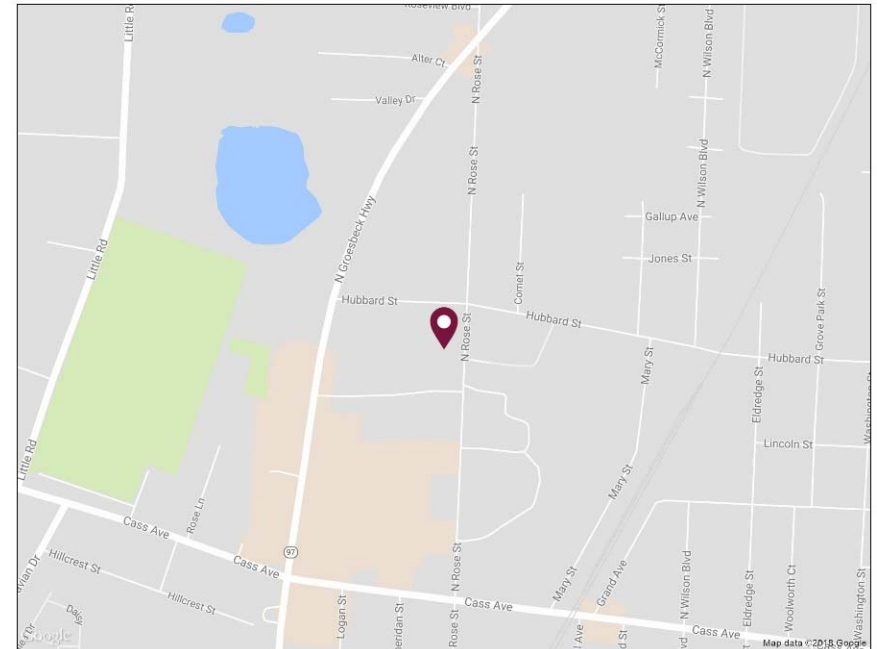
Two Drive Ins (12'w x 14'h)

Industrial: 8,743 SF (66.3%) Office: 3,236 SF (24.5%)

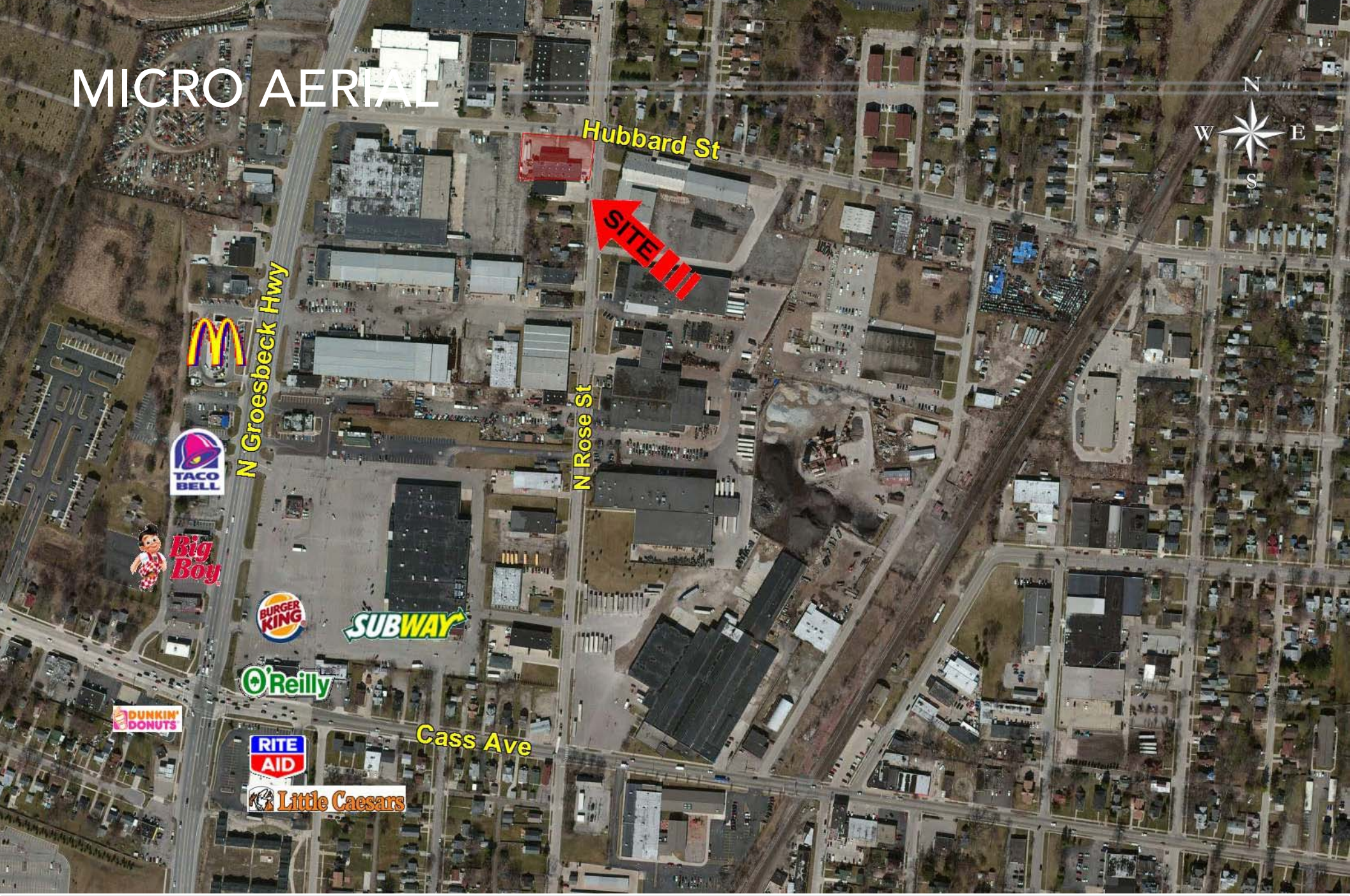
440-480v Power

25 Parking Spaces

16' Ceiling Height



MICRO AERIAL



MACRO AERIAL



VIEW NORTH



VIEW EAST



VIEW WEST



DEMOGRAPHICS

DESCRIPTION		1 MILE	3 MILE	5 MILE
POPULATION	2017 Estimated Population	8,428	88,681	241,389
	2022 Projected Population	8,797	91,164	247,272
	2010 Census Population	8,779	82,832	226,323
	2000 Census Population	8,951	81,285	206,066
	Projected Annual Growth 2017 to 2022	0.9%	0.6%	0.5%
	Historical Annual Growth 2000 to 2017	-0.3%	0.5%	1.0%
HOUSEHOLDS	2017 Estimated Households	2,925	35,922	98,306
	2022 Projected Households	3,140	37,566	102,326
	2010 Census Households	3,410	34,274	92,083
	2000 Census Households	3,415	33,258	82,905
	Projected Annual Growth 2017 to 2022	1.5%	0.9%	0.8%
	Historical Annual Growth 2000 to 2017	-0.8%	0.5%	1.1%
RACE	2017 Est. White	79.1%	77.4%	80.4%
	2017 Est. Black	14.9%	16.5%	13.3%
	2017 Est. Asian or Pacific Islander	2.2%	2.4%	3.0%
	2017 Est. American Indian or Alaska Native	0.3%	0.3%	0.3%
	2017 Est. Other Races	3.5%	3.4%	3.0%
INCOME	2017 Est. Average Household Income	\$89,470	\$76,336	\$80,660
	2017 Est. Median Household Income	\$60,079	\$61,272	\$65,844
	2017 Est. Per Capita Income	\$33,936	\$31,839	\$33,240
BUSINESS	2017 Est. Total Businesses	595	3,526	8,444
	2017 Est. Total Employees	9,415	40,893	95,054

