



FOR LEASE

20931 MACK AVE, GROSSE POINTE WOODS, MI 48236

**FOR
LEASE**

**AVAILABLE
1,663 SF**



LANDMARK
COMMERCIAL ▲ REAL ESTATE ▲ SERVICES

ANTHONY J. VITALE

Associate
avitale@landmarkcres.com
(248) 488-2620

LOUIS J. CIOTTI

Associate Broker
lciotti@landmarkcres.com
(248) 488-2620

SCOTT J. SONENBERG

Associate
ssonenberg@landmarkcres.com
(248) 488-2620

CONTACT US

30500 Northwestern Hwy, Suite 200
Farmington Hills, MI 48334

Phone: (248) 488-2620

landmarkcres.com

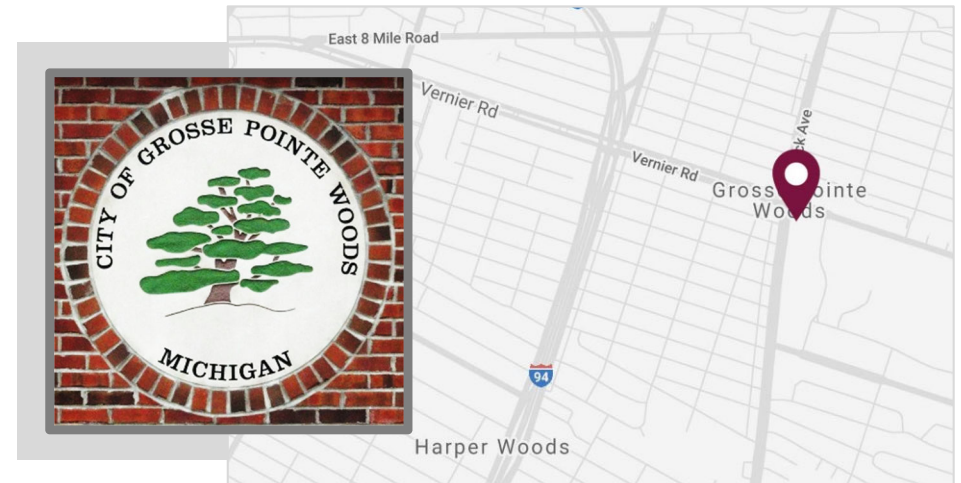
FOR LEASE

PROPERTY DETAILS

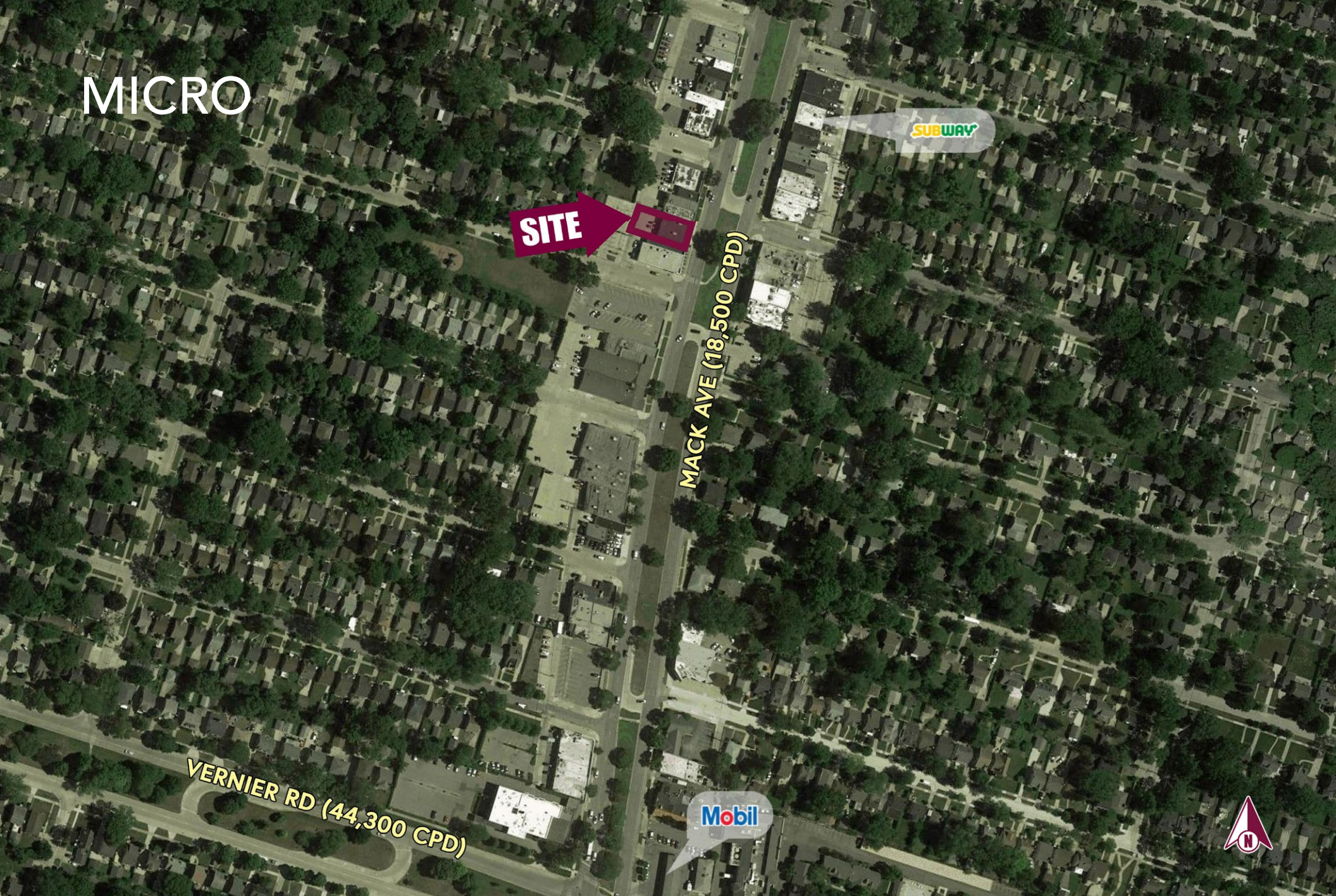
Location:	20931 Mack Ave Grosse Pointe Woods, MI 48236
Property Type:	Freestanding
Date Available:	Immediately
Rent:	\$18.00/SF NNN
Available Space:	1,663 SF
Tenant Roster:	Medical Weight Loss Clinic
Contact:	Anthony J. Vitale avitale@landmarkcres.com Louis J. Ciotti lcotti@landmarkcres.com Scott J. Sonenberg ssonenberg@landmarkcres.com (248) 488-2620

DESCRIPTION

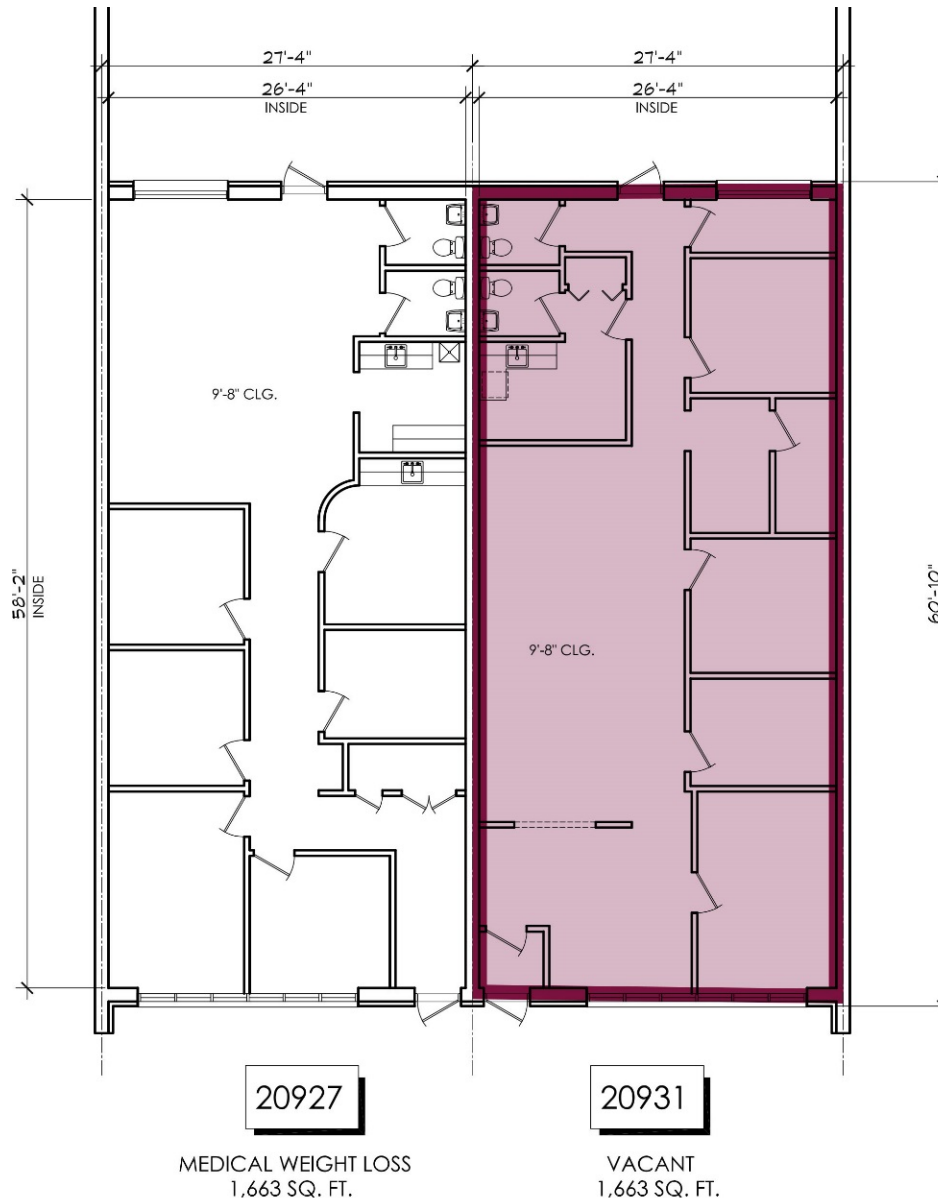
- Highly visible Retail/Office opportunity
- Located within a dense and affluent residential community with strong demographics
- Site is situated within the highly trafficked Mack Avenue corridor
- Property is in close proximity to multiple schools and various national regional tenants



MICRO



FLOOR PLAN



DEMOGRAPHICS

DESCRIPTION		1 MILE	3 MILE	5 MILE
POPULATION	2018 Estimated Population	17,478	121,180	274,949
	2023 Projected Population	17,176	120,511	282,553
	2010 Census Population	18,059	124,962	284,726
	2000 Census Population	18,838	131,610	332,616
	Projected Annual Growth 2018 to 2023	-0.3%	-0.1%	0.6%
	Historical Annual Growth 2000 to 2018	-0.4%	-0.4%	-1.0%
HOUSEHOLDS	2018 Estimated Households	7,803	50,785	110,638
	2023 Projected Households	7,680	50,698	113,685
	2010 Census Households	7,644	49,704	108,727
	2000 Census Households	7,871	53,203	122,892
	Projected Annual Growth 2018 to 2023	-0.3%	-	0.6%
	Historical Annual Growth 2000 to 2018	-	-0.3%	-0.6%
RACE	2018 Est. White	78.0%	60.6%	55.4%
	2018 Est. Black	16.4%	34.2%	39.1%
	2018 Est. Asian or Pacific Islander	2.8%	2.2%	2.2%
	2018 Est. American Indian or Alaska Native	0.2%	0.3%	0.3%
	2018 Est. Other Races	2.5%	2.8%	3.0%
INCOME	2018 Est. Average Household Income	\$91,245	\$82,267	\$74,838
	2018 Est. Median Household Income	\$72,178	\$64,885	\$58,517
	2018 Est. Per Capita Income	\$40,767	\$34,521	\$30,157
BUSINESS	2018 Est. Total Businesses	664	4,256	8,297
	2018 Est. Total Employees	4,626	36,565	78,438

