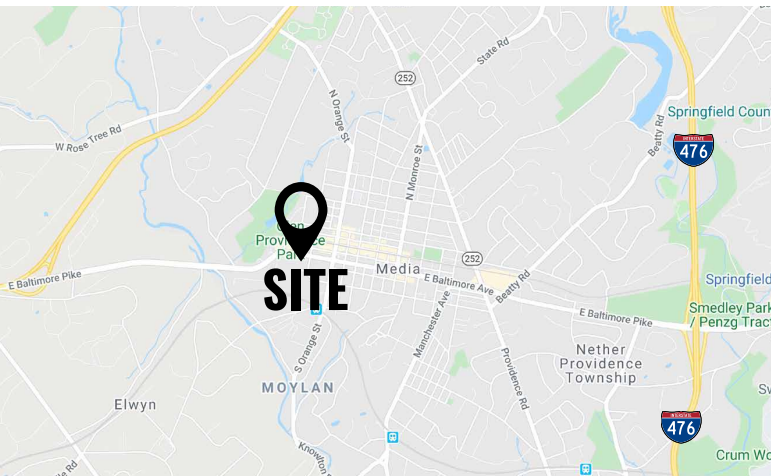


412 W BALTIMORE AVE | MEDIA, PA 19063

FOR SALE: \$565,000
FOR LEASE: \$20 PSF

PROPERTY FEATURES

- ✓ This beautiful stone front building is conveniently located right on Baltimore Ave – within walking distance to the downtown areas of Media
- ✓ ±1,800 SF, 2-floor office suite that is nicely appointed with hardwood floors and a fireplace
- ✓ There are 6 office areas, a reception area, a full kitchen, a full bathroom, and a powder room
- ✓ There is also a ±900 SF walk out, finished basement with powder room.
- ✓ There is ample off-street parking in back of the building.



CONTACT US

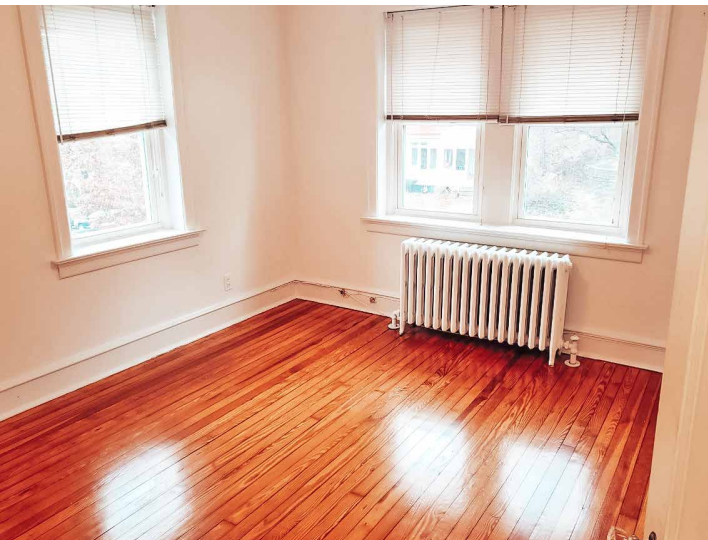
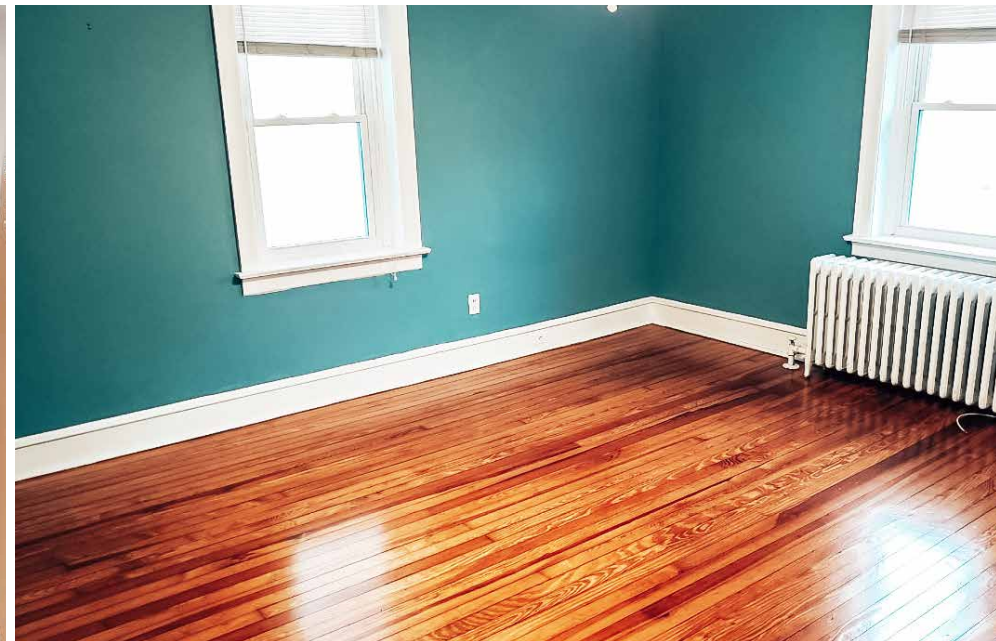
ZOMMICK MCMAHON
COMMERCIAL REAL ESTATE

JEFF DOWD
Phone: 610.359.1100
Cell: 610.842.4383
Email: jdowd@zmcre.com

STEVE DIBATTISTA
Phone: 610.359.1100
Cell: 610.368.2801
Email: sdibattista@zmcre.com

1306 Wilmington Pike, Suite A-2
West Chester, PA 19382
610.359.1100
www.zmcre.com

INTERIOR PROPERTY PHOTOS: 412 W BALTIMORE AVE, MEDIA, PA 19063




ZOMMICK MCMAHON
COMMERCIAL REAL ESTATE

CONTACT US

JEFF DOWD
Phone: 610.359.1100
Cell: 610.842.4383
Email: jdowd@zmcre.com

STEVE DIBATTISTA
Phone: 610.359.1100
Cell: 610.368.2801
Email: sdibattista@zmcre.com

1306 Wilmington Pike, Suite A-2
West Chester, PA 19382
610.359.1100
www.zmcre.com

SITE LOCATION AERIAL: 412 W BALTIMORE AVE, MEDIA, PA 19063




ZOMMICK MCMAHON
COMMERCIAL REAL ESTATE

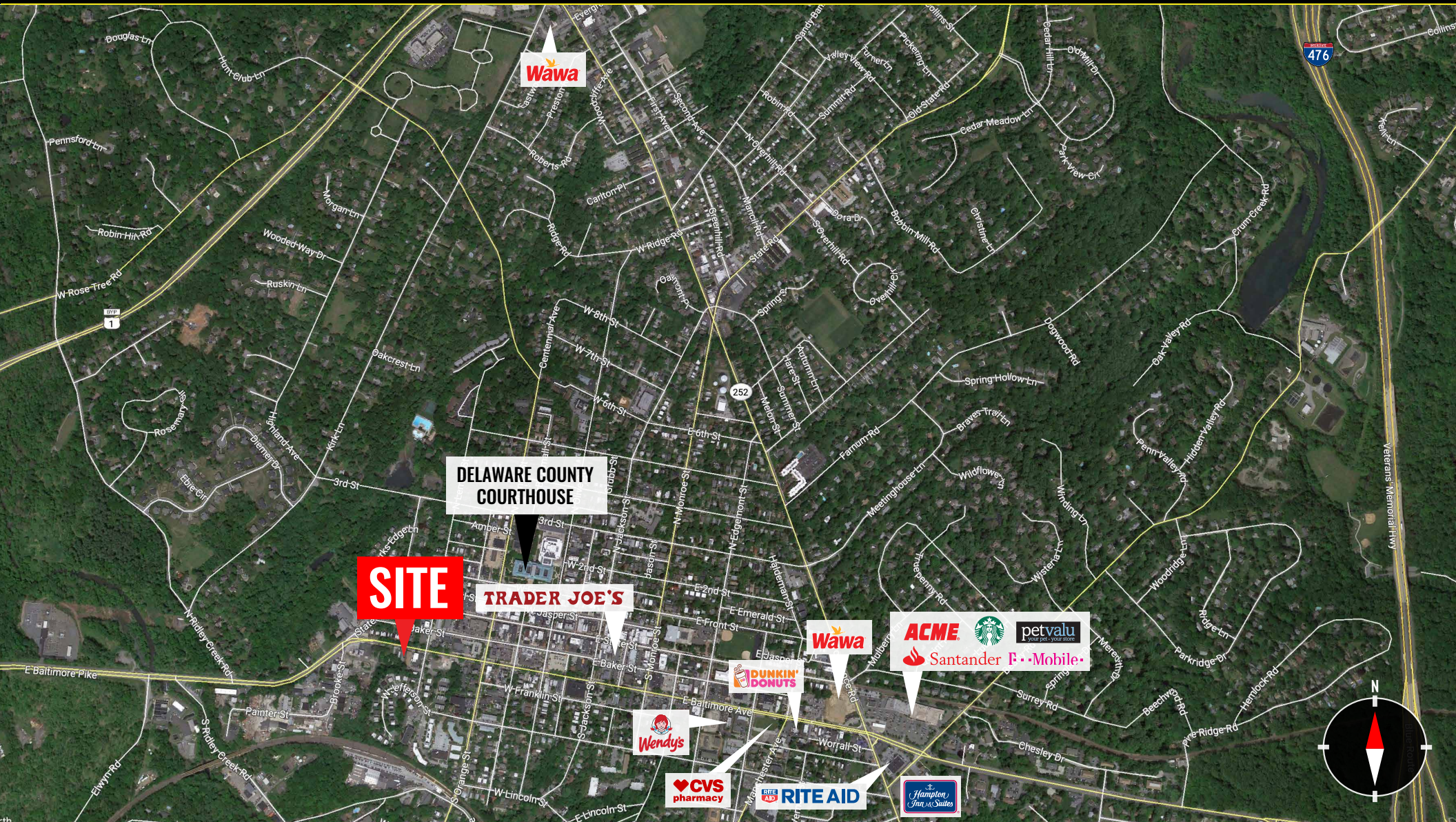
CONTACT US

JEFF DOWD
Phone: 610.359.1100
Cell: 610.842.4383
Email: jdowd@zmcre.com

STEVE DIBATTISTA
Phone: 610.359.1100
Cell: 610.368.2801
Email: sdibattista@zmcre.com

1306 Wilmington Pike, Suite A-2
West Chester, PA 19382
610.359.1100
www.zmcre.com

MARKET AERIAL: 412 W BALTIMORE AVE, MEDIA, PA 19063



CONTACT US

JEFF DOWD
Phone: 610.359.1100
Cell: 610.842.4383
Email: jdowd@zmcre.com

STEVE DIBATTISTA
Phone: 610.359.1100
Cell: 610.368.2801
Email: sdibattista@zmcre.com

1306 Wilmington Pike, Suite A-2
West Chester, PA 19382
610.359.1100
www.zmcre.com

ZOMMICK MCMAHON
COMMERCIAL REAL ESTATE

ABOUT ZOMMICK McMAHON COMMERCIAL REAL ESTATE

Zommick McMahon Commercial Real Estate, Inc. has been a Metro Philadelphia Area staple since its inception in 1949. The Company was founded by Joseph Zommick, and continues today with Ryan McMahon and his highly experienced staff, whom are all results-oriented professionals.

SOME OF OUR SATISFIED CLIENTS:



CONTACT US

JEFF DOWD
Phone: 610.359.1100
Cell: 610.842.4383
Email: jdowd@zmcre.com

STEVE DIBATTISTA
Phone: 610.359.1100
Cell: 610.368.2801
Email: sdibattista@zmcre.com

1306 Wilmington Pike, Suite A-2
West Chester, PA 19382
610.359.1100
www.zmcre.com

