

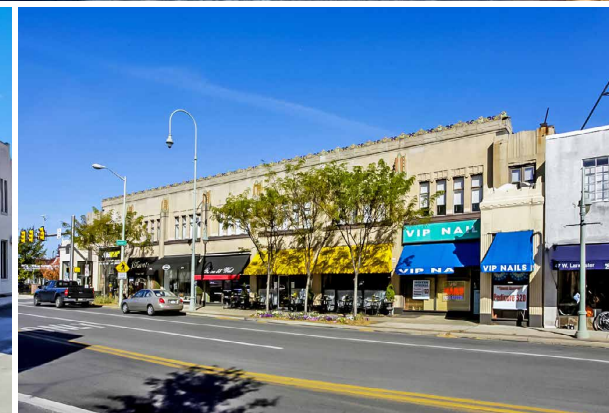
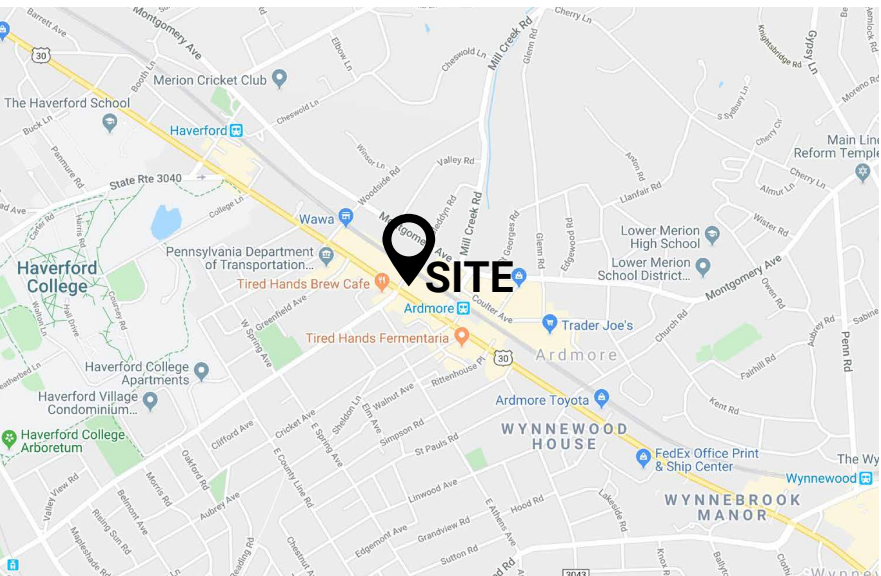
TURN-KEY RESTAURANT IN ARDMORE AVAILABLE

51-53 Lancaster Ave | Ardmore, PA 19003 | Montgomery County

FOR LEASE:
\$7,200 MONTH
Plus Gas/Electric/Water

PROPERTY FEATURES

- ✓ ± 2,200 SF Turn-key Restaurant Available For Lease
- ✓ Located on prestigious Lancaster Ave in Ardmore
- ✓ This beautiful restaurant was formerly A la Maison Bistro. This space can come fully equipped with furniture and equipment (instant restaurant for the right tenant - ask for details).
- ✓ Public parking lot in rear, full basement.
- ✓ Outdoor dining area
- ✓ \$7,200 a month plus gas/electric/water.



CONTACT US

CAROLYN CLINE, ASSOCIATE BROKER

Phone: 610.359.1100

Cell: 610.299.8306

Email: ccline@zmcre.com

1306 Wilmington Pike, Suite A-2

West Chester, PA 19382

610.359.1100

www.zmcre.com


ZOMMICK MCMAHON
COMMERCIAL REAL ESTATE

PROPERTY PHOTOS: 51-53 LANCASTER AVE, ARDMORE, PA 19003



CONTACT US

CAROLYN CLINE, ASSOCIATE BROKER

Phone: 610.359.1100

Cell: 610.299.8306

Email: ccline@zmcre.com

1306 Wilmington Pike, Suite A-2

West Chester, PA 19382

610.359.1100

www.zmcre.com

SITE AERIAL: 51-53 LANCASTER AVE, ARDMORE, PA 19003



CONTACT US

CAROLYN CLINE, ASSOCIATE BROKER

Phone: 610.359.1100

Cell: 610.299.8306

Email: ccline@zmcre.com

1306 Wilmington Pike, Suite A-2

West Chester, PA 19382

610.359.1100

www.zmcre.com


ZOMMICK MCMAHON
COMMERCIAL REAL ESTATE

ABOUT ZOMMICK McMAHON COMMERCIAL REAL ESTATE

Zommick McMahon Commercial Real Estate, Inc. has been a Metro Philadelphia Area staple since its inception in 1949. The Company was founded by Joseph Zommick, and continues today with Ryan McMahon and his highly experienced staff, whom are all results-oriented professionals.

SOME OF OUR SATISFIED CLIENTS:



IRON HILL
BREWERY & RESTAURANT



CONTACT US

CAROLYN CLINE, ASSOCIATE BROKER

Phone: 610.359.1100

Cell: 610.299.8306

Email: ccline@zmcre.com

1306 Wilmington Pike, Suite A-2

West Chester, PA 19382

610.359.1100

www.zmcre.com

