



FOR LEASE

WATERFORD PLAZA

3415-3417 ELIZABETH LAKE RD, WATERFORD, MI 48328

FOR
LEASE

17,000 SF
AVAILABLE



LANDMARK
COMMERCIAL ▲ REAL ESTATE ▲ SERVICES

SCOTT J. SONENBERG

Senior Associate
ssonenberg@landmarkcres.com
(248) 488-2620

LOUIS J. CIOTTI

Managing Director
lciotti@landmarkcres.com
(248) 488-2620

CONTACT US

30500 Northwestern Hwy, Suite 200
Farmington Hills, MI 48334

Phone: (248) 488-2620

landmarkcres.com

FOR LEASE

PROPERTY DETAILS

Location:	3415-3417 Elizabeth Lake Rd Waterford, MI 48328
Property Type:	Shopping Center
Rent:	\$10.00/SF
Available Space:	17,000 SF
Traffic Count:	Highland Rd (M-59)(34,456 CPD) Elizabeth Lake Rd (25,400 CPD)
Contact:	Scott J. Sonenberg ssonenberg@landmarkcres.com Louis J. Ciotti lciootti@landmarkcres.com (248) 488-2620

TENANT ROSTER

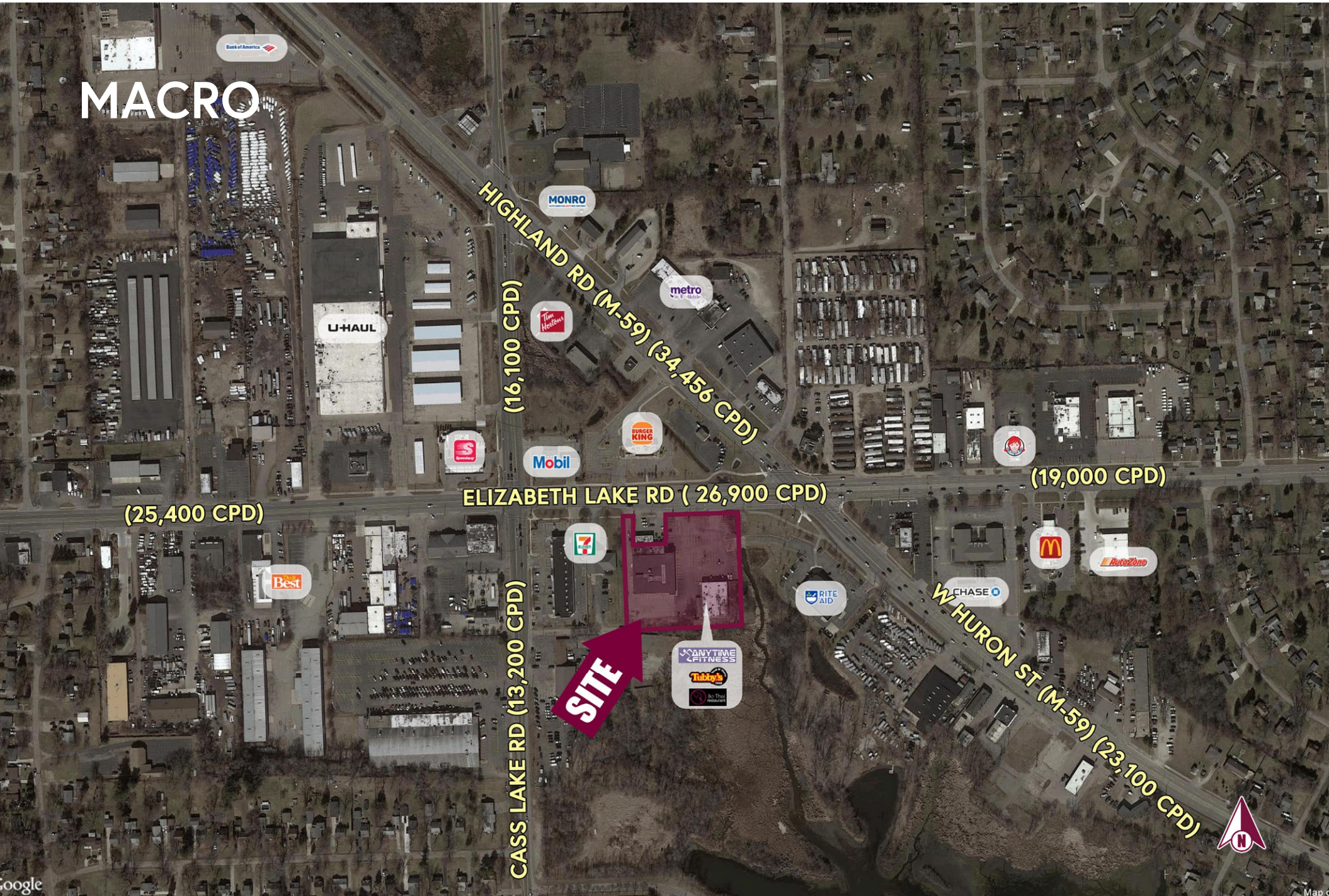


HIGHLIGHTS

- Heavily trafficked intersection
- Prime visibility from the corner
- Huge pylon signage
- Two points of ingress/egress from M-59 & Elizabeth Lake Rd
- Attractive rates



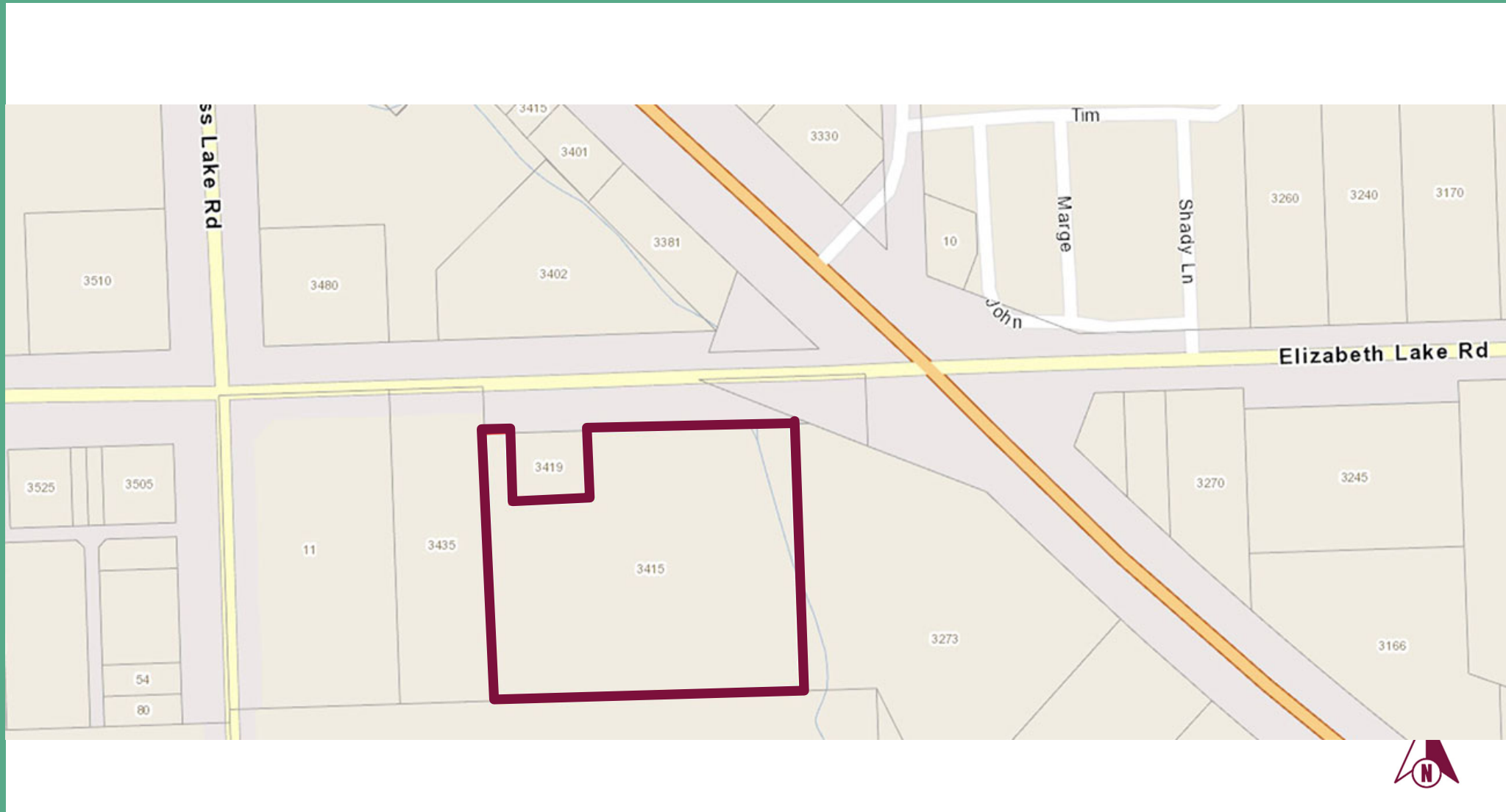
MACRO



PLAT



PLAT

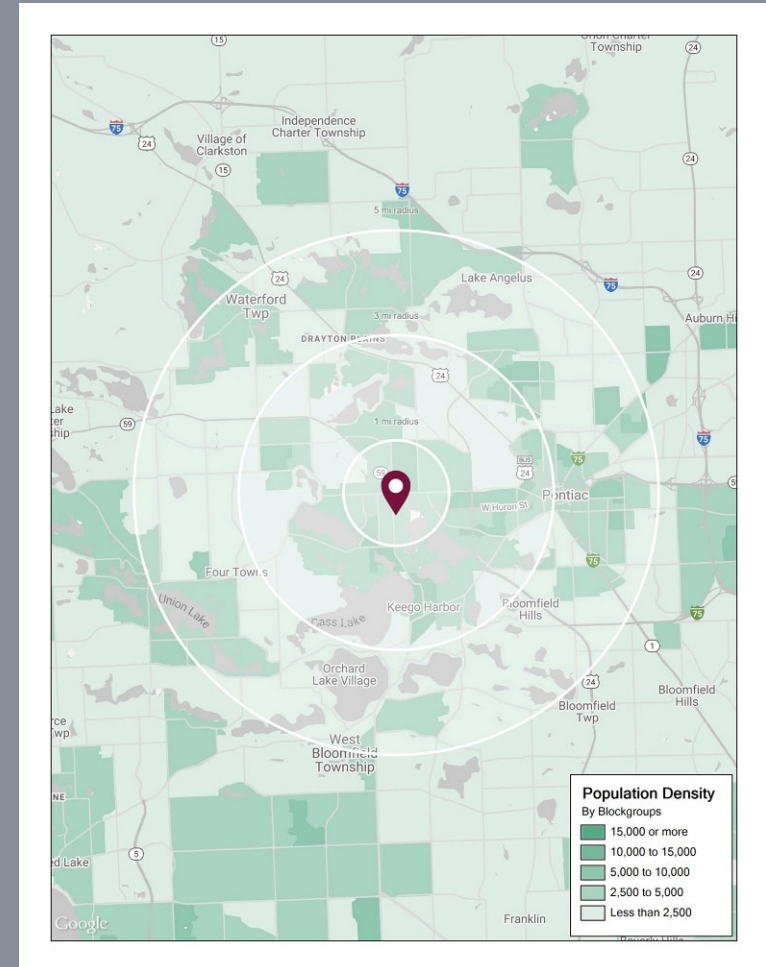


SITE PLAN



DEMOGRAPHICS

DESCRIPTION		1 MILE	3 MILE	5 MILE
POPULATION	2021 Estimated Population	11,507	68,052	165,433
	2026 Projected Population	11,411	67,154	163,273
	2010 Census Population	11,245	65,891	161,549
	2000 Census Population	10,865	70,090	170,564
	Projected Annual Growth 2021 to 2026	-0.2%	-0.3%	-0.3%
	Historical Annual Growth 2000 to 2021	0.3%	-0.1%	-0.1%
HOUSEHOLDS	2021 Estimated Households	5,119	27,881	66,042
	2026 Projected Households	5,186	28,149	66,648
	2010 Census Households	4,927	26,548	63,441
	2000 Census Households	4,778	27,746	65,153
	Projected Annual Growth 2021 to 2026	0.3%	0.2%	0.2%
	Historical Annual Growth 2000 to 2021	0.3%	-	-
RACE	2021 Est. White	77.8%	71.2%	66.9%
	2021 Est. Black	10.2%	17.2%	21.0%
	2021 Est. Asian or Pacific Islander	3.2%	3.7%	4.7%
	2021 Est. American Indian or Alaska Native	0.4%	0.5%	0.4%
	2021 Est. Other Races	8.4%	7.5%	6.9%
INCOME	2021 Est. Average Household Income	\$71,287	\$79,530	\$94,193
	2021 Est. Median Household Income	\$54,670	\$60,620	\$69,998
	2021 Est. Per Capita Income	\$31,739	\$33,125	\$37,916
BUSINESS	2021 Est. Total Businesses	311	2,554	6,499
	2021 Est. Total Employees	2,194	23,931	63,926



3415-3417 ELIZABETH LAKE RD, WATERFORD, MI 48328

CONTACT US

SCOTT J.
SONENBERG

ssonenberg@landmarkcres.com

+1 248 488 2620

LOUIS J.
CIOTTI

lciotti@landmarkcres.com

+1 248 488 2620