



FOR LEASE SHOPS OF MARQUETTE

US-41 & BRICKYARD RD, MARQUETTE, MI 49855

**FOR
LEASE**



**APPROXIMATELY
5,000 SF
AVAILABLE**

**OUTLOTS
AVAILABLE**

US-41 (32,000 CPD)

LANDMARK



COMMERCIAL REAL ESTATE SERVICES

MAX J. GOLDMAN

Senior Director
mgoldman@landmarkcres.com
(248) 488-2620

CONTACT US

3050 Northwestern Hwy, Suite 200
Farmington Hills, MI 48331

Phone: (248) 488-2620

landmarkcres.com

FOR LEASE

PROPERTY DETAILS

Location:	US-41 & Brickyard Rd Marquette, MI 49855
Property Type:	Power Center
Rent:	TBD
Available Space:	5,000 SF (Approximate)
Zoning:	Commercial
Traffic Count:	US-41 = 32,000 cpd
Contact:	Max J. Goldman mgoldman@landmarkcres.com C: (734) 646-5959 W: (248) 488-2620

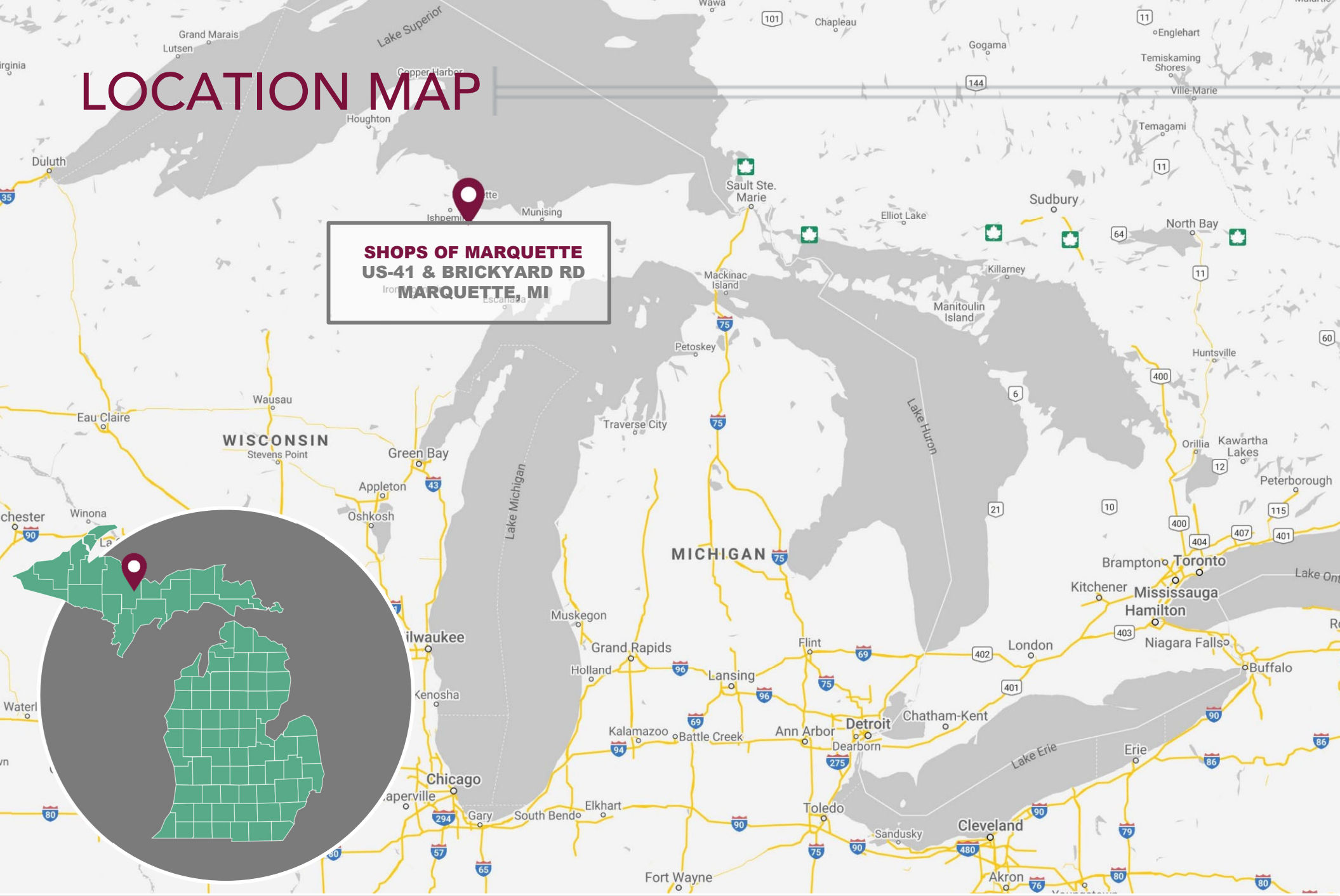
ANCHORS



HIGHLIGHTS

- Join Lowe's, Meijer & T.J. Maxx
- Located in Marquette's Best Retail Corridor

LOCATION MAP



SHOPS OF MARQUETTE
US-41 & BRICKYARD RD
Marquette, MI

MICRO

meijer

T.J. MAXX

PET SMART

ULTA
BEAUTY

LOWE'S

APPROXIMATELY
5,000 SF
AVAILABLE

OUTLOTS
AVAILABLE

BURGER
KING

US-41 (32,000 CPD)

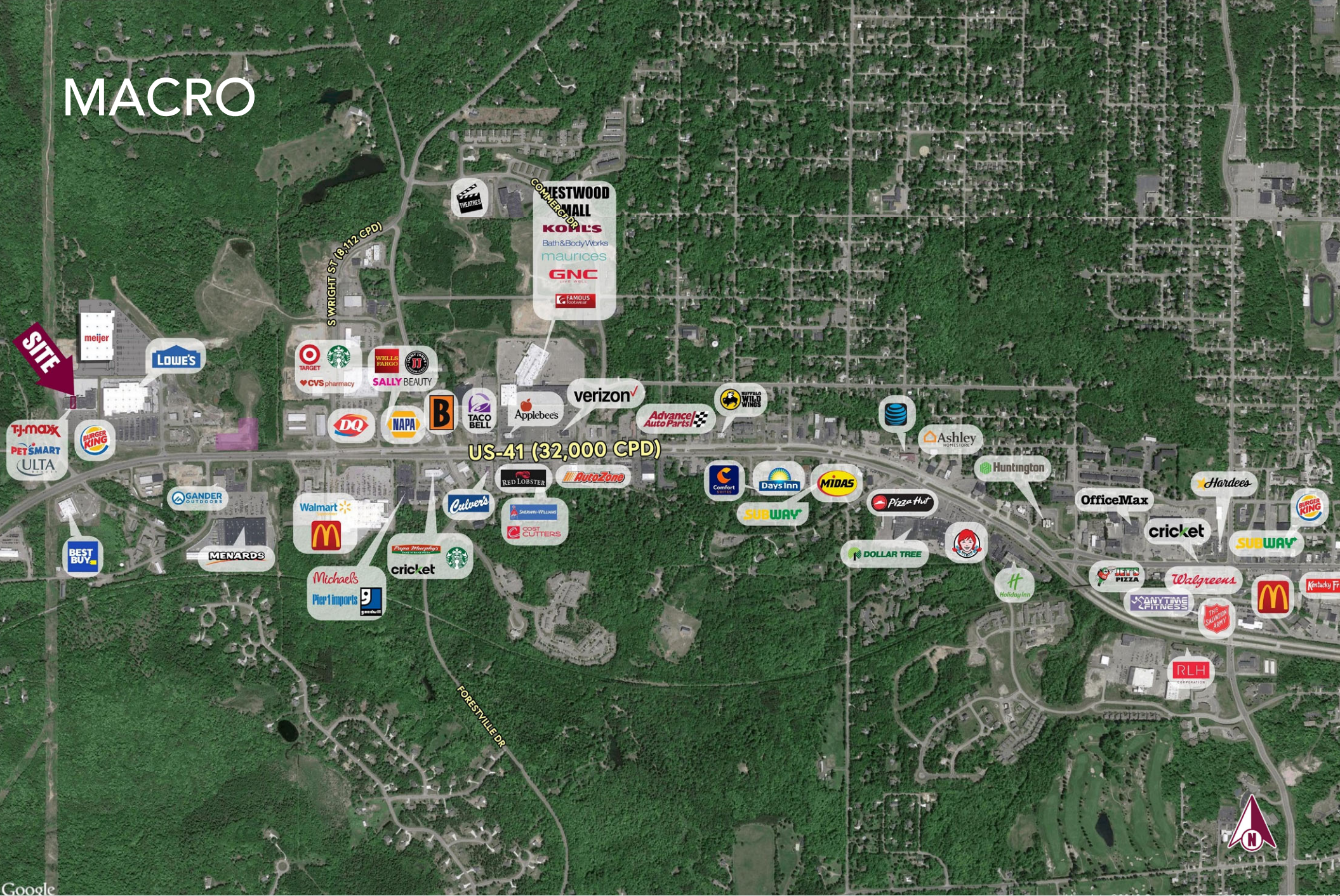
GANDER
OUTDOORS

BRICKYARD RD



Map data ©2020 Imagery ©2020, Maxar Technologies, USDA Farm Service Agency

MACRO



SITE PLAN



DEMOGRAPHICS

DESCRIPTION		10 MILE	25 MILE	75 MILE
POPULATION	2019 Estimated Population	42,168	64,824	216,744
	2024 Projected Population	41,729	64,833	214,960
	2010 Census Population	42,857	65,511	223,659
	2000 Census Population	41,043	63,013	226,813
	Projected Annual Growth 2019 to 2024	-0.2%	-	-0.2%
	Historical Annual Growth 2000 to 2019	0.1%	0.2%	-0.2%
HOUSEHOLDS	2019 Estimated Households	18,064	27,966	95,832
	2024 Projected Households	18,024	28,214	95,839
	2010 Census Households	17,303	26,789	93,327
	2000 Census Households	16,341	25,059	90,977
	Projected Annual Growth 2019 to 2024	-	0.2%	-
	Historical Annual Growth 2000 to 2019	0.6%	0.6%	0.3%
RACE	2019 Est. White	92.4%	92.5%	91.9%
	2019 Est. Black	2.2%	1.8%	1.6%
	2019 Est. Asian or Pacific Islander	1.1%	1.0%	1.2%
	2019 Est. American Indian or Alaska Native	1.3%	1.4%	1.7%
	2019 Est. Other Races	3.0%	3.3%	3.6%
INCOME	2019 Est. Average Household Income	\$66,055	\$66,385	\$62,052
	2019 Est. Median Household Income	\$55,935	\$56,558	\$51,923
	2019 Est. Per Capita Income	\$29,343	\$29,352	\$28,040
BUSINESS	2019 Est. Total Businesses	2,464	3,246	10,717
	2019 Est. Total Employees	23,817	37,526	106,178

