

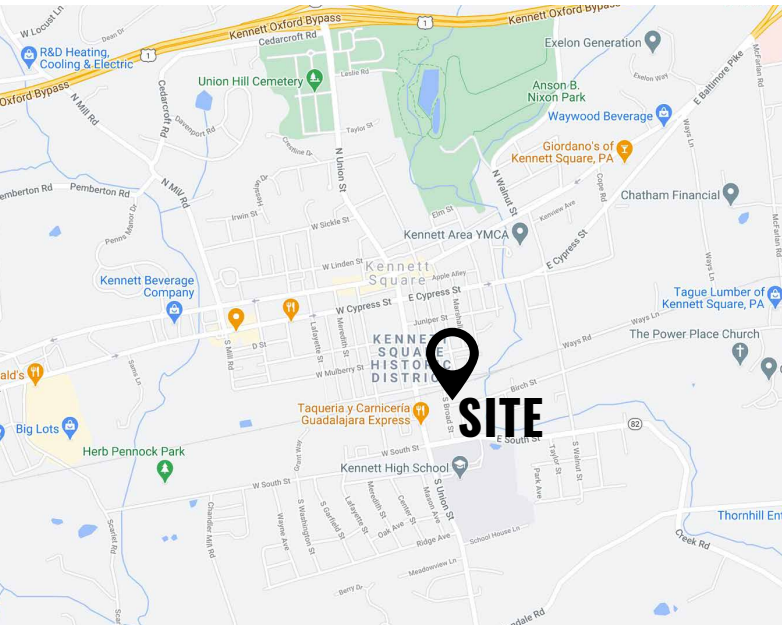
±5,700 SF FULLY FIT-OUT RESTAURANT

201 Birch Street | Kennett Square, PA 19348 | Chester County

FOR LEASE
Call for Details

PROPERTY FEATURES / HIGHLIGHTS

- ✓ ± 5,700 SF Fully Fit-Out Restaurant For Lease
- ✓ Liquor License Available
- ✓ Large Kitchen Area
- ✓ On Site Parking
- ✓ Seating For 150
- ✓ Large Outdoor Area
- ✓ Walking Distance to The Creamery and Braeloch Brewing



CONTACT US

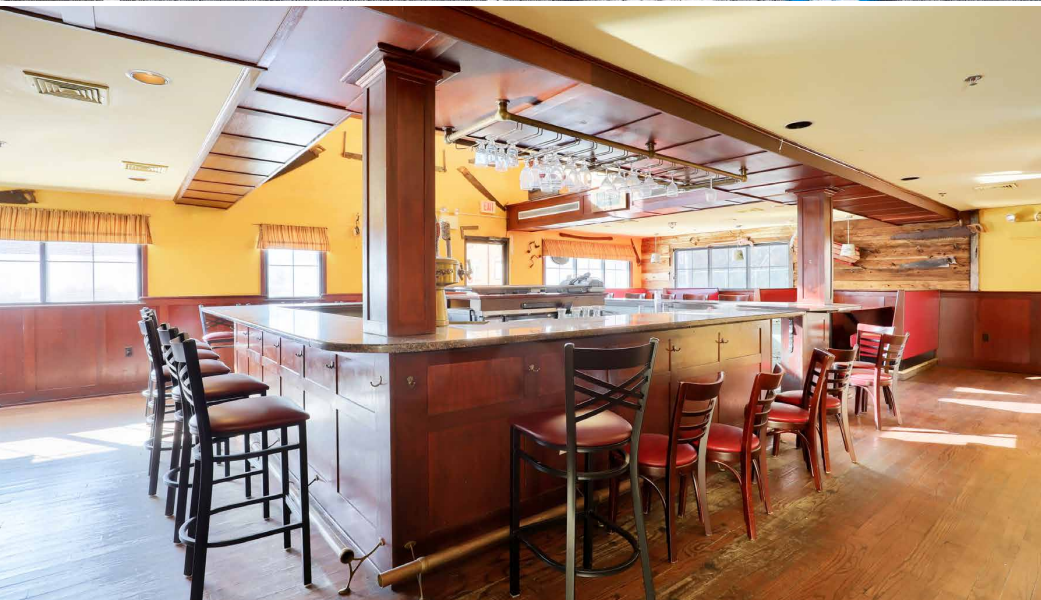
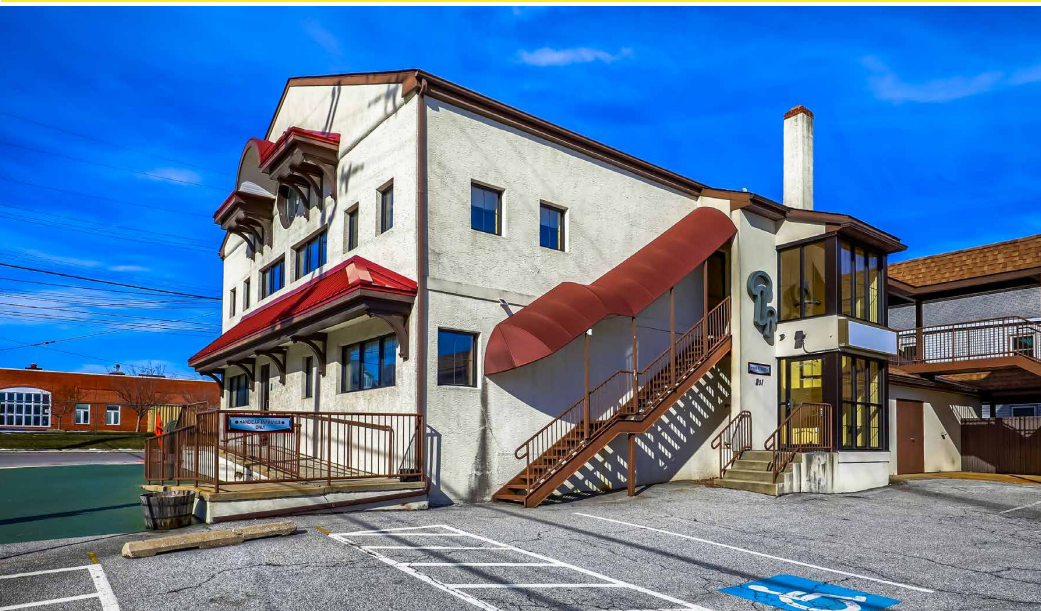
JAMES PINCKNEY
Phone: 610.359.1100
Cell: 610.453.2569
Email: jpinckney@zmcre.com

TESS SCOTT
Phone: 610.359.1100
Cell: 610.401.3453
Email: tscott@zmcre.com

1306 Wilmington Pike, Suite A-2
West Chester, PA 19382
610.359.1100
www.zmcre.com


ZOMMICK MCMAHON
COMMERCIAL REAL ESTATE

PROPERTY PHOTOS: 201 BIRCH STREET, KENNETT SQUARE, PA 19348



CONTACT US


ZOMMICK MCMAHON
COMMERCIAL REAL ESTATE

JAMES PINCKNEY
Phone: 610.359.1100
Cell: 610.453.2569
Email: jpinckney@zmcre.com

TESS SCOTT
Phone: 610.359.1100
Cell: 610.401.3453
Email: tscott@zmcre.com

1306 Wilmington Pike, Suite A-2
West Chester, PA 19382
610.359.1100
www.zmcre.com

PROPERTY PHOTOS: 201 BIRCH STREET, KENNETT SQUARE, PA 19348




ZOMMICK MCMAHON
COMMERCIAL REAL ESTATE

CONTACT US

JAMES PINCKNEY
Phone: 610.359.1100
Cell: 610.453.2569
Email: jpinckney@zmcre.com

TESS SCOTT
Phone: 610.359.1100
Cell: 610.401.3453
Email: tscott@zmcre.com

1306 Wilmington Pike, Suite A-2
West Chester, PA 19382
610.359.1100
www.zmcre.com

RETAIL MARKET AERIAL: 201 BIRCH STREET, KENNETT SQUARE, PA 19348

DEMOGRAPHICS	1 MILE	3 MILES	5 MILES
POPULATION	7,699	22,148	49,645
MEDIAN HHI	\$82,514	\$108,056	\$113,710
HOUSEHOLDS	2,538	7,517	17,390



CONTACT US

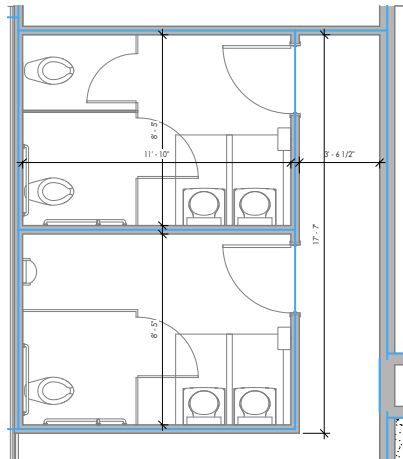
ZOMMICK MCMAHON
COMMERCIAL REAL ESTATE

JAMES PINCKNEY
Phone: 610.359.1100
Cell: 610.453.2569
Email: jpinckney@zmcre.com

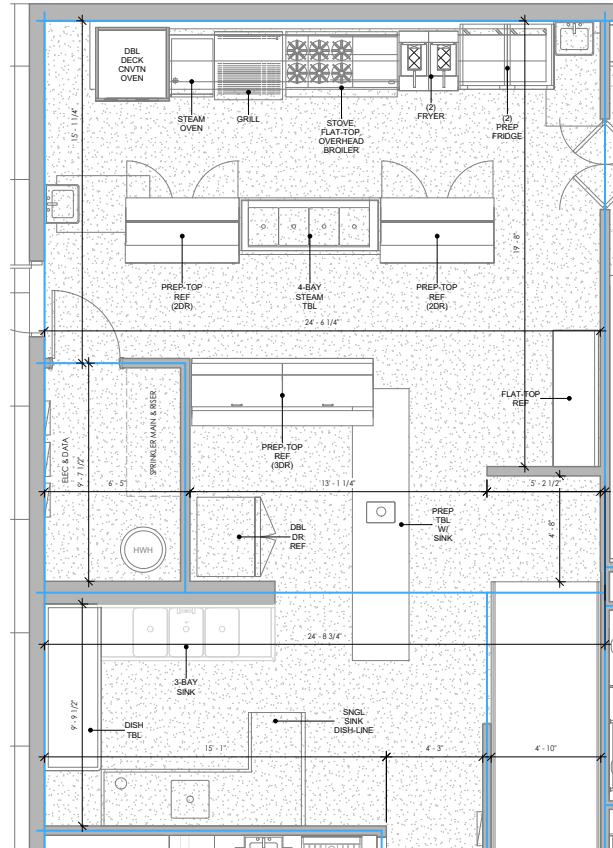
TESS SCOTT
Phone: 610.359.1100
Cell: 610.401.3453
Email: tscott@zmcre.com

1306 Wilmington Pike, Suite A-2
West Chester, PA 19382
610.359.1100
www.zmcre.com

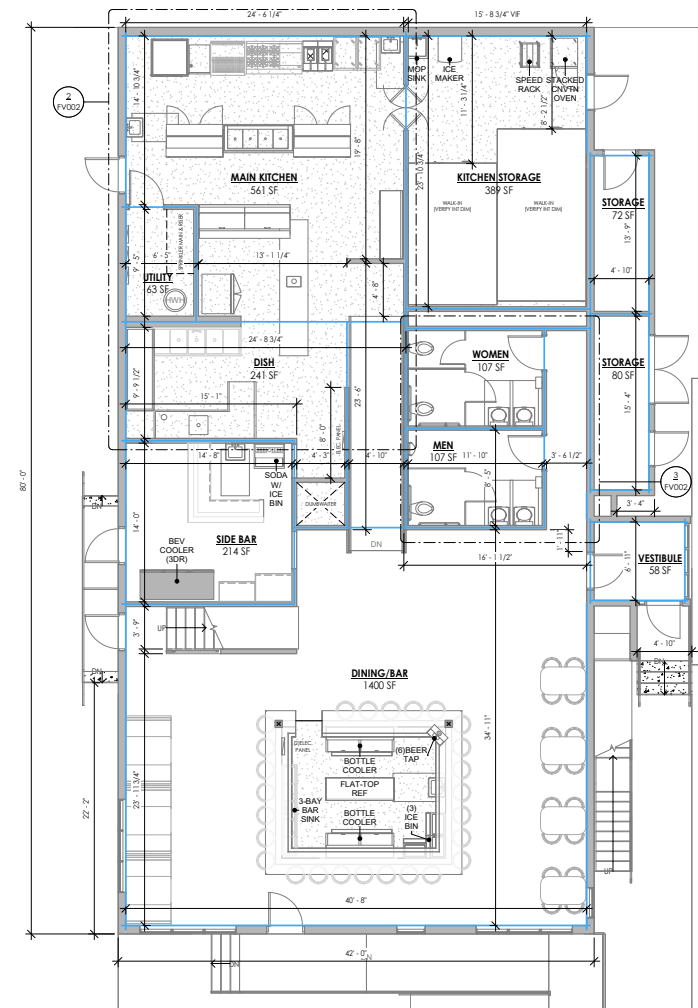
PROPERTY FLOOR PLAN: 201 BIRCH STREET, KENNETT SQUARE, PA 19348



3 | LEVEL 01 (REST) - ENLARGED BATHROOM PLAN
FV002 | 3/8" = 1'-0"



2 | LEVEL 01 (REST) - ENLARGED KITCHEN PLAN
FV002 | 3/8" = 1'-0"



1 | LEVEL 01 (REST)
FV002 | 3/16" = 1'-0"

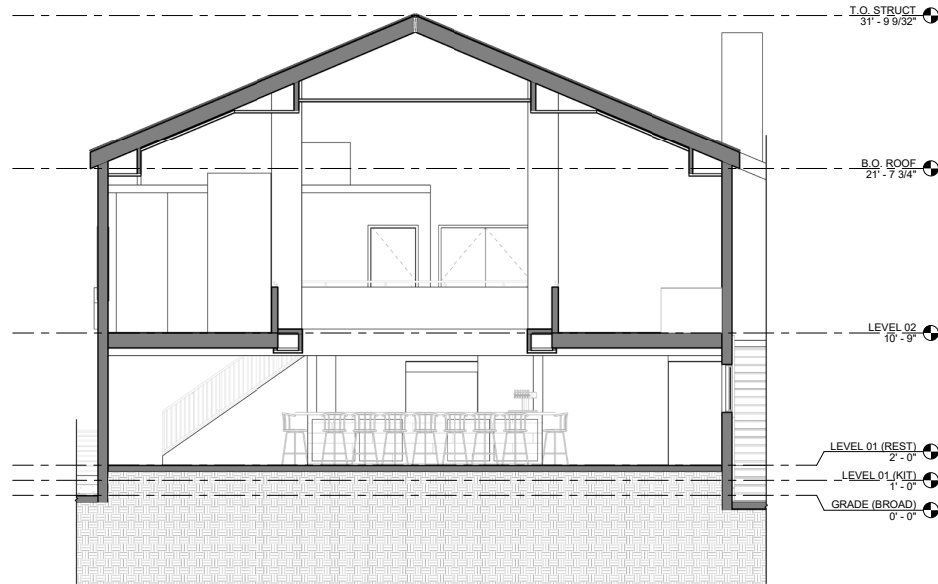
CONTACT US

JAMES PINCKNEY
Phone: 610.359.1100
Cell: 610.453.2569
Email: jpinckney@zmcre.com

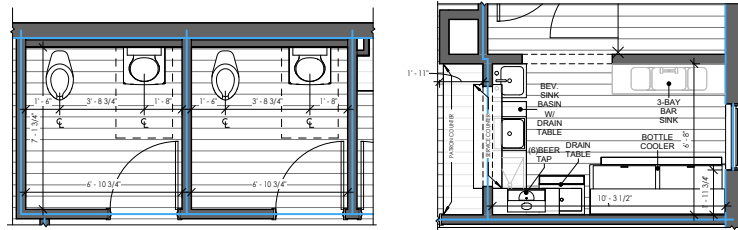
TESS SCOTT
Phone: 610.359.1100
Cell: 610.401.3453
Email: tscott@zmcre.com

1306 Wilmington Pike, Suite A-2
West Chester, PA 19382
610.359.1100
www.zmcre.com

PROPERTY FLOOR PLAN: 201 BIRCH STREET, KENNETT SQUARE, PA 19348

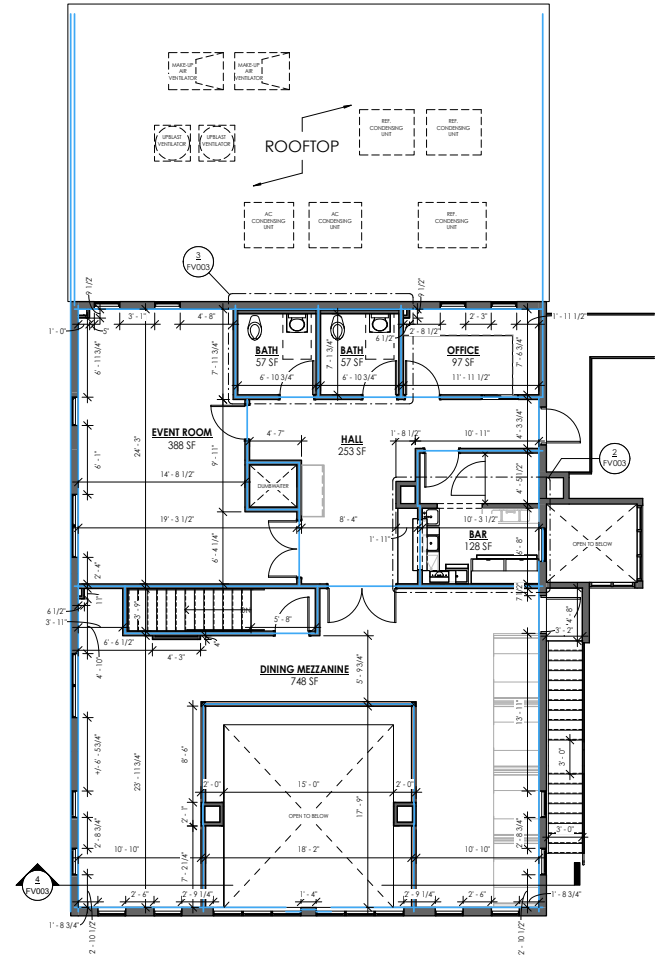


4 | RESTAURANT - HORIZONTAL SECTION
FV003 | 1/4" = 1'-0"



3 | LEVEL 02 - ENLARGED BATHROOM PLAN
FV003 | 3/8" = 1'-0"

2 | LEVEL 02 - ENLARGED EVENT BAR
FV003 | 3/8" = 1'-0"



1 | LEVEL 02
FV003 | 3/16" = 1'-0"

CONTACT US

ABOUT ZOMMICK McMAHON COMMERCIAL REAL ESTATE

Zommick McMahon Commercial Real Estate, Inc. has been a Metro Philadelphia Area staple since its inception in 1949. The Company was founded by Joseph Zommick, and continues today with Ryan McMahon and his highly experienced staff, whom are all results-oriented professionals.

SOME OF OUR SATISFIED CLIENTS:



CONTACT US

JAMES PINCKNEY
Phone: 610.359.1100
Cell: 610.453.2569
Email: jpinckney@zmcre.com

TESS SCOTT
Phone: 610.359.1100
Cell: 610.401.3453
Email: tscott@zmcre.com

1306 Wilmington Pike, Suite A-2
West Chester, PA 19382
610.359.1100
www.zmcre.com