

CREATIVE OFFICE/STUDIO/WAREHOUSE FOR LEASE

Prime Fashion District Location!

AVAILABLE SQ.FT.: 18,000 ±

DIVISIBLE SQ.FT.: 6,000 ±



224 E 11TH STREET, LOS ANGELES, CA 90015

PROPERTY HIGHLIGHTS

- Heart of DTLA Fashion District
- Close to Staples Center, LA Live & Convention Center
- Southwest corner of Santee St and 11th St
- One-half block north of famous Santee Alley
- Contract parking directly across the street
- 7' x 8' freight elevator access (8:00am to 6:00pm)
- All units sprinklered with 9' clearance height
- Ground level loading door
- Light & bright! Windows on three sides
- Concrete flooring in units 401/601 and tile in unit 301
- 100 amps/120-240 volts/1-phase/3-wire power service
- Fluorescent lighting
- Lease rental: \$1.10 per sq.ft. gross (2-5 year term)

PROPERTY DETAILS

Unit 301	6,000 ± Sq.Ft.
Large open area	
2 restrooms	
Central A/C	
Unit 401	6,000 ± Sq.Ft.
3 offices totaling 900 sq.ft.	
2 restrooms	
1 window A/C unit	
Unit 601	6,000 ± Sq.Ft.
4 offices totaling 1,300 sq.ft.	
2 restrooms	
No A/C	

For More Information, Please Contact

IRA FLUSBERG

213.222.1203

ira@majorproperties.com

CA BRE LIC. # 01487601

The information contained herein is furnished by sources we deem reliable, but for which we assume no liability. It is given in confidence and with the understanding that all negotiations pertaining to the property be handled through the listing office. All measurements are approximate.

CREATIVE OFFICE/WAREHOUSE FOR LEASE



Unit 601



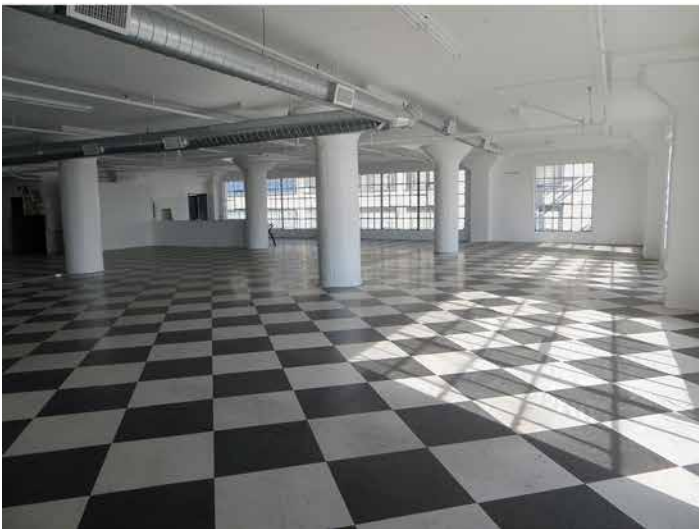
Unit 601



Unit 401



Unit 401



Unit 301



Unit 301

