

FOR LEASE



Commercial Property

3,300 ± Space Available
Part of Larger Property

2620 W PICO BOULEVARD
LOS ANGELES, CA 90006

Heavy Traffic Exposure

- 3,300 ± sq.ft. ground floor unit available
- Ideal for any retail use
- Former religious facility
- Office area and two restrooms
- Excellent visibility on busy Pico Blvd
- 23,056 vehicles per day traffic count (2018)
- Great signage
- Includes adjacent shared gated parking lot with alley access
- Zoned LA C2
- Walk score: 93 — Transit score: 69
- Lease Rental: \$5,000 per month (\$1.51 per sq.ft. modified gross)
- Term: Submit

For More Information, Please Contact:

SAMUEL P LUSTER

(213) 222-1200

sam@majorproperties.com

Lic. 02012790

ANTHONY S BEHAR

(213) 747-8426

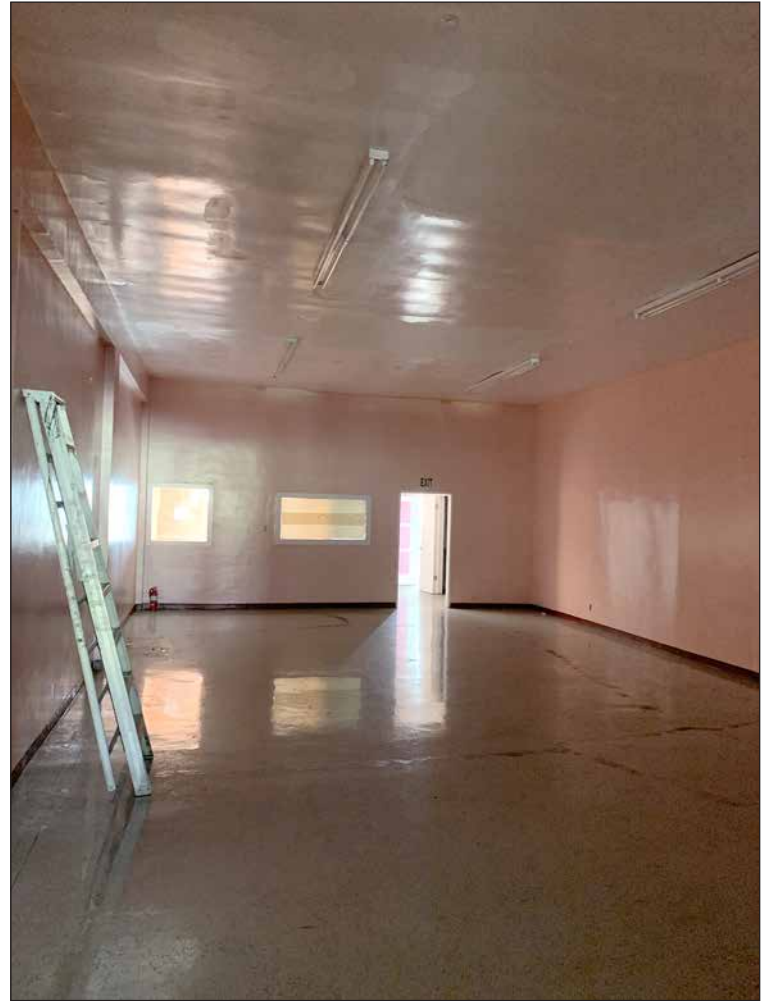
anthony@majorproperties.com

Lic. 01368565

The information contained herein is furnished by sources we deem reliable, but for which we assume no liability. It is given in confidence and with the understanding that all negotiations pertaining to the property be handled through the listing office. All measurements are approximate.

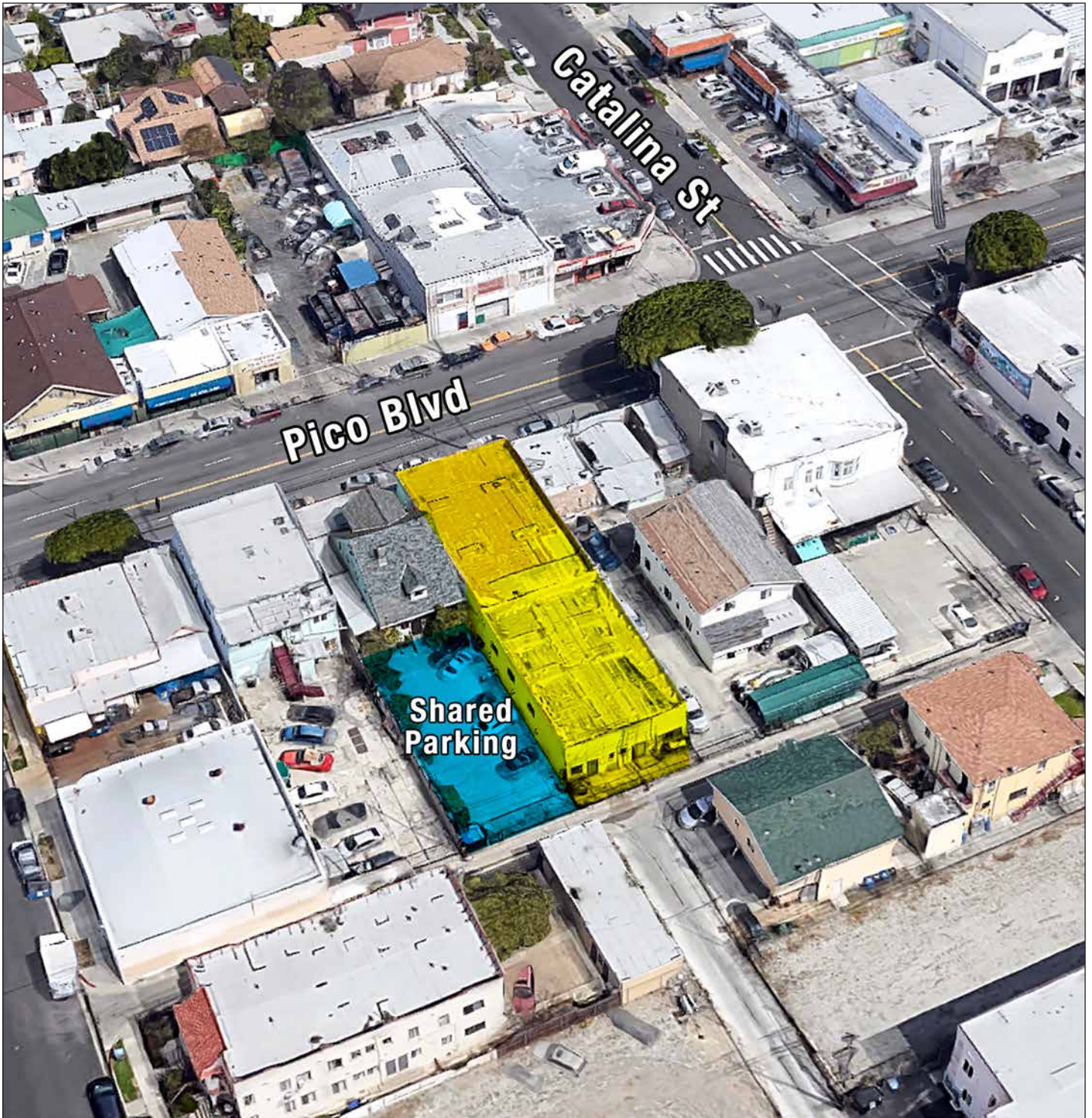
FOR LEASE

2620 W PICO BLVD, LOS ANGELES, CA 90006



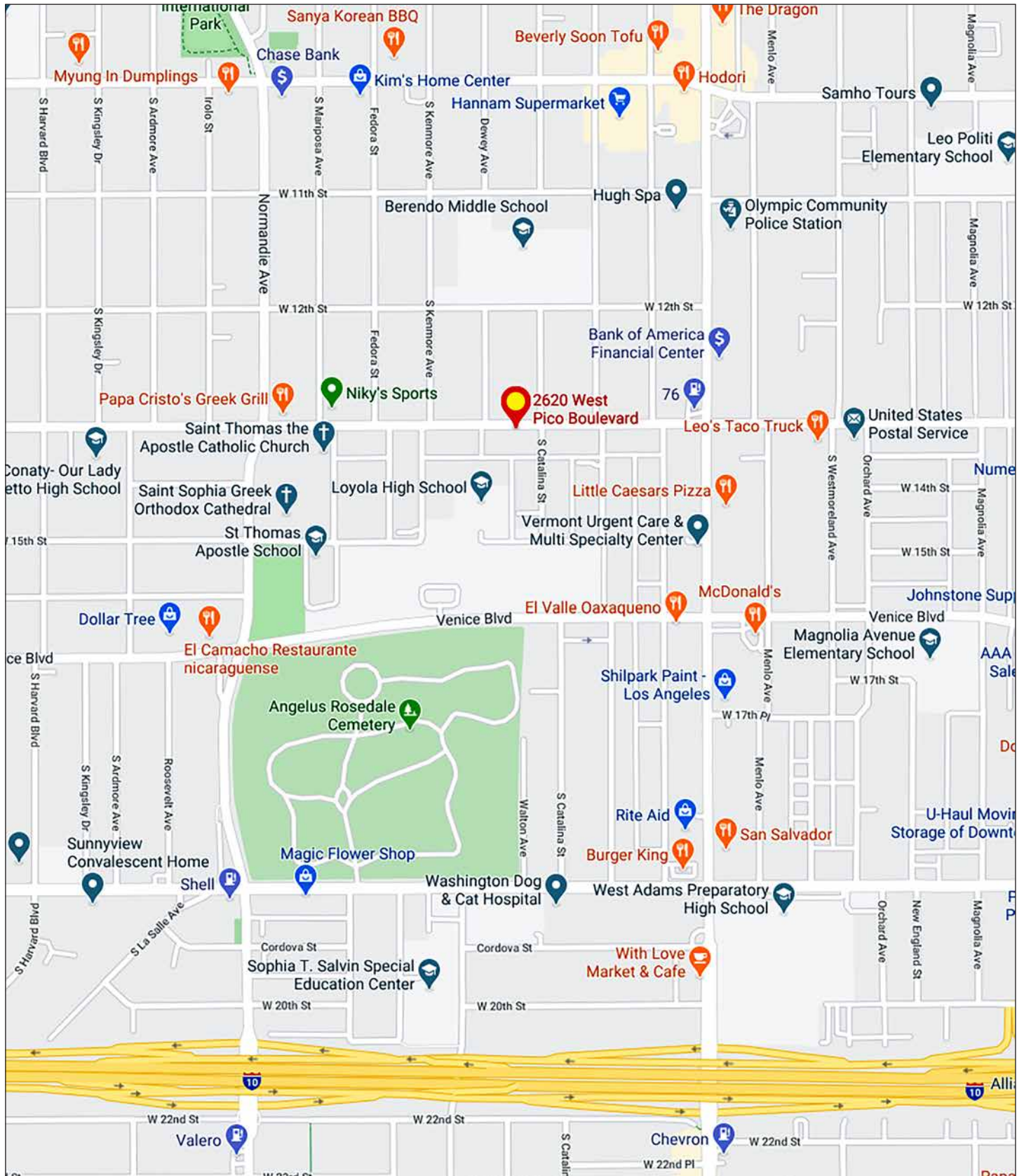
FOR LEASE

2620 W PICO BLVD, LOS ANGELES, CA 90006



FOR LEASE

2620 W PICO BLVD, LOS ANGELES, CA 90006



MAJOR PROPERTIES
REAL ESTATE
Commercial • Industrial • Residential

1200 West Olympic Boulevard, Los Angeles, California 90015
213.747.4151 • fax 213.749.7972 • www.majorproperties.com

