

DTLA MULTI-USE SPACE FOR LEASE

Warehouse, Retail, Creative Offices

7,300 SQ.FT. BUILDING
12,260 SQ.FT. OF LAND



1616 S LOS ANGELES STREET, LOS ANGELES, CA 90015

Corner Location With I-10 Freeway Visibility

- 7,300 sq.ft. multi-use property available for lease
- Ideal for any warehouse/showroom, retail/wholesale or creative office use
- Located on busy Los Angeles Street just north of Santa Monica (I-10) Freeway
- Excellent exposure with visibility from I-10 freeway
- Masonry construction built in 1978 — Zoned LA M2
- 17' ceiling height (15-1/2' clear)
- 4 offices plus kitchenette and 2 restrooms
- Includes fenced parking at rear of property for 5-7 vehicles
- Lease rental: TBD (call broker)

For More Information, Please Contact:

JESSE MCKENZIE
(213) 747-4156
jesse@majorproperties.com
CA BRE LIC. # 01939062

MARK D SILVERMAN
(213) 747-0379
mark@majorproperties.com
CA BRE LIC. # 01310992

The information contained herein is furnished by sources we deem reliable, but for which we assume no liability. It is given in confidence and with the understanding that all negotiations pertaining to the property be handled through the listing office. All measurements are approximate.

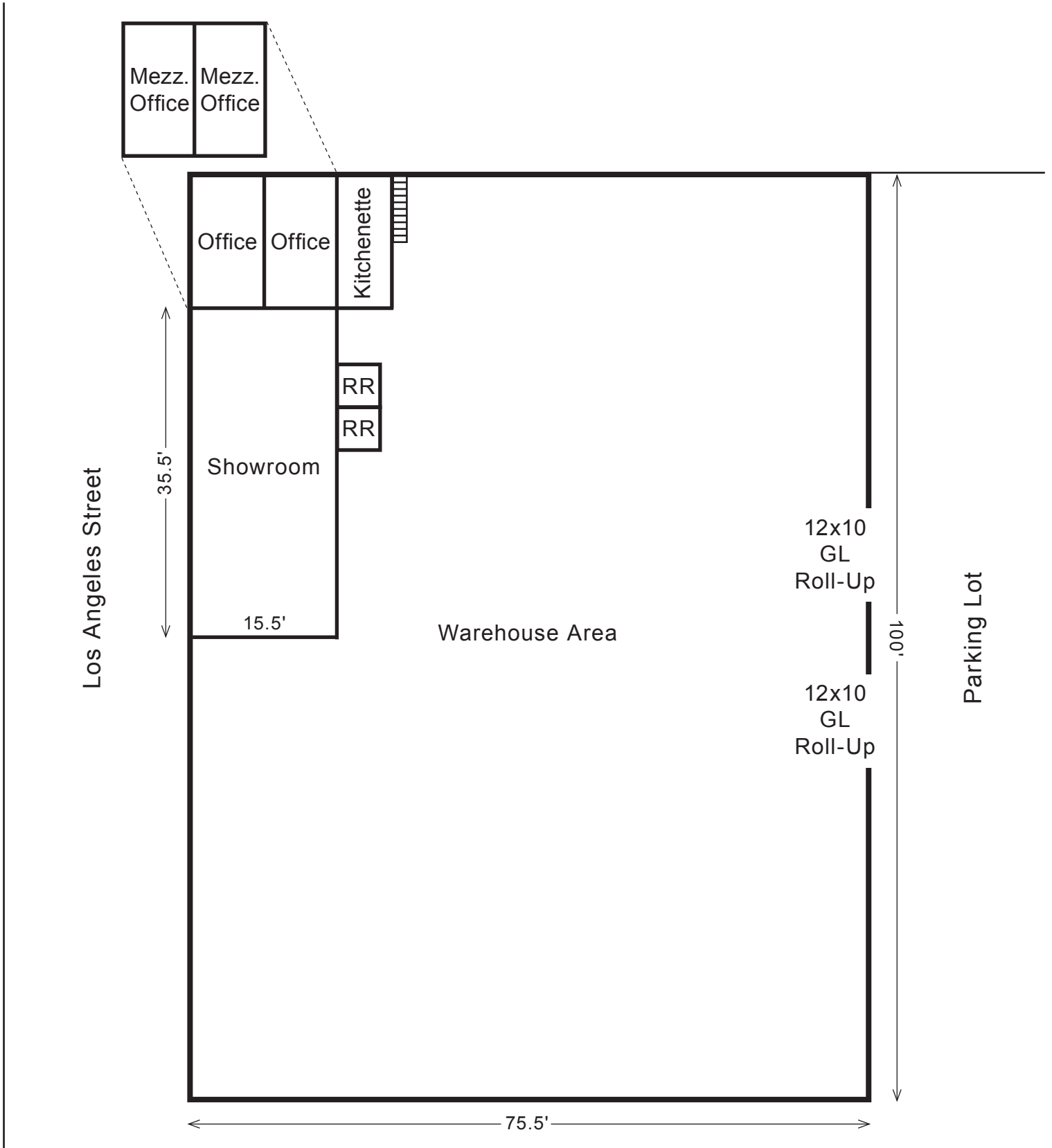
FOR LEASE



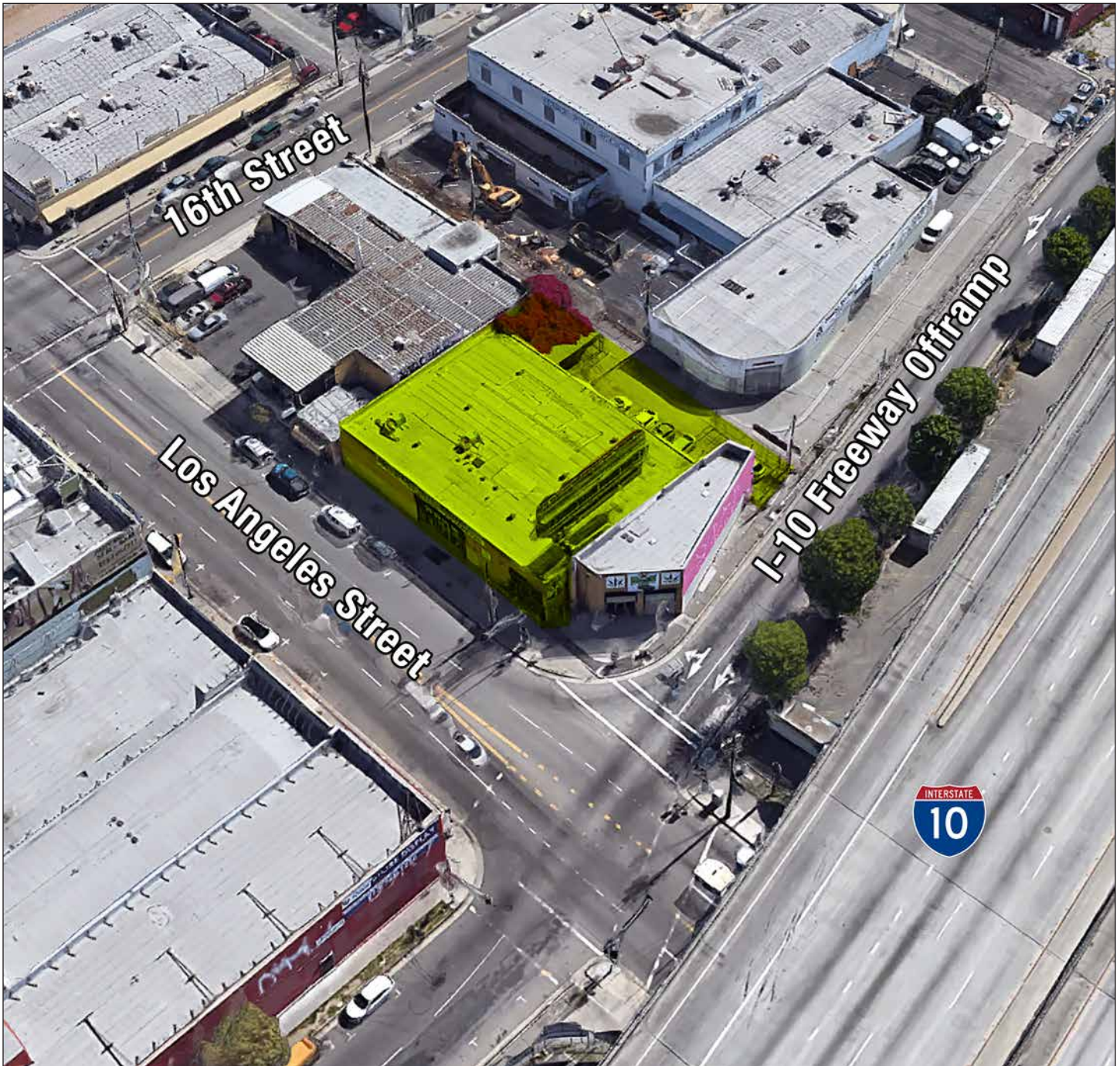
- Clean building
- Light and bright
- Showroom, 4 offices, kitchenette and lobby area
- High ceiling clearance
- 2 ground level roll-up loading doors
- Great window frontage
- Ample signage exposure



DTLA MULTI-USE SPACE FOR LEASE



DTLA MULTI-USE SPACE FOR LEASE



DTLA MULTI-USE SPACE FOR LEASE

