

COMMERCIAL PROPERTY FOR SALE

Heavy Traffic Corner Exposure

BUILDING SQ.FT.: 3,965±

LAND SQ.FT.: 4,680±



4224 S VERMONT AVENUE, LOS ANGELES, CA 90037

- One-story commercial building
- Ideal for retail, office, religious applications
- Currently leased — Contact broker for income and expense information
- Northeast corner of Vermont Avenue and 42nd Place
- Built in 1922/1930 — Zoned LA C2
- Assessor's parcel number 5020-034-009
- 61.42' frontage on Vermont Avenue and 76.2' frontage on 42nd Place
- Just five blocks south of the Memorial Coliseum, Banc of California Stadium, and Exposition Park
- Asking price: \$810,000 (\$204.29 per sq.ft.)

For More Information, Please Contact:

DANIEL MOUSSAZADEH

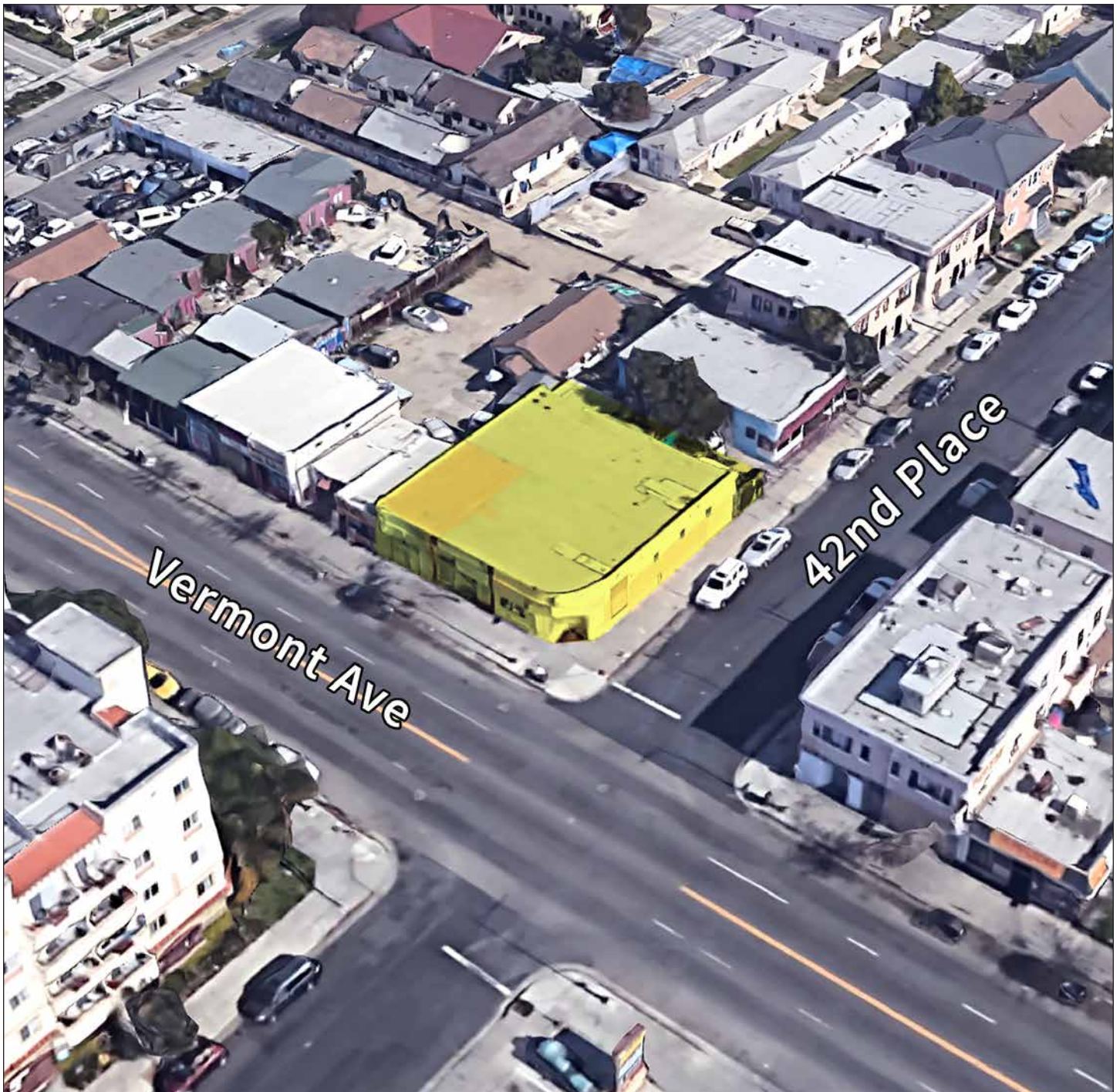
(310) 999-9437

daniel@majorproperties.com

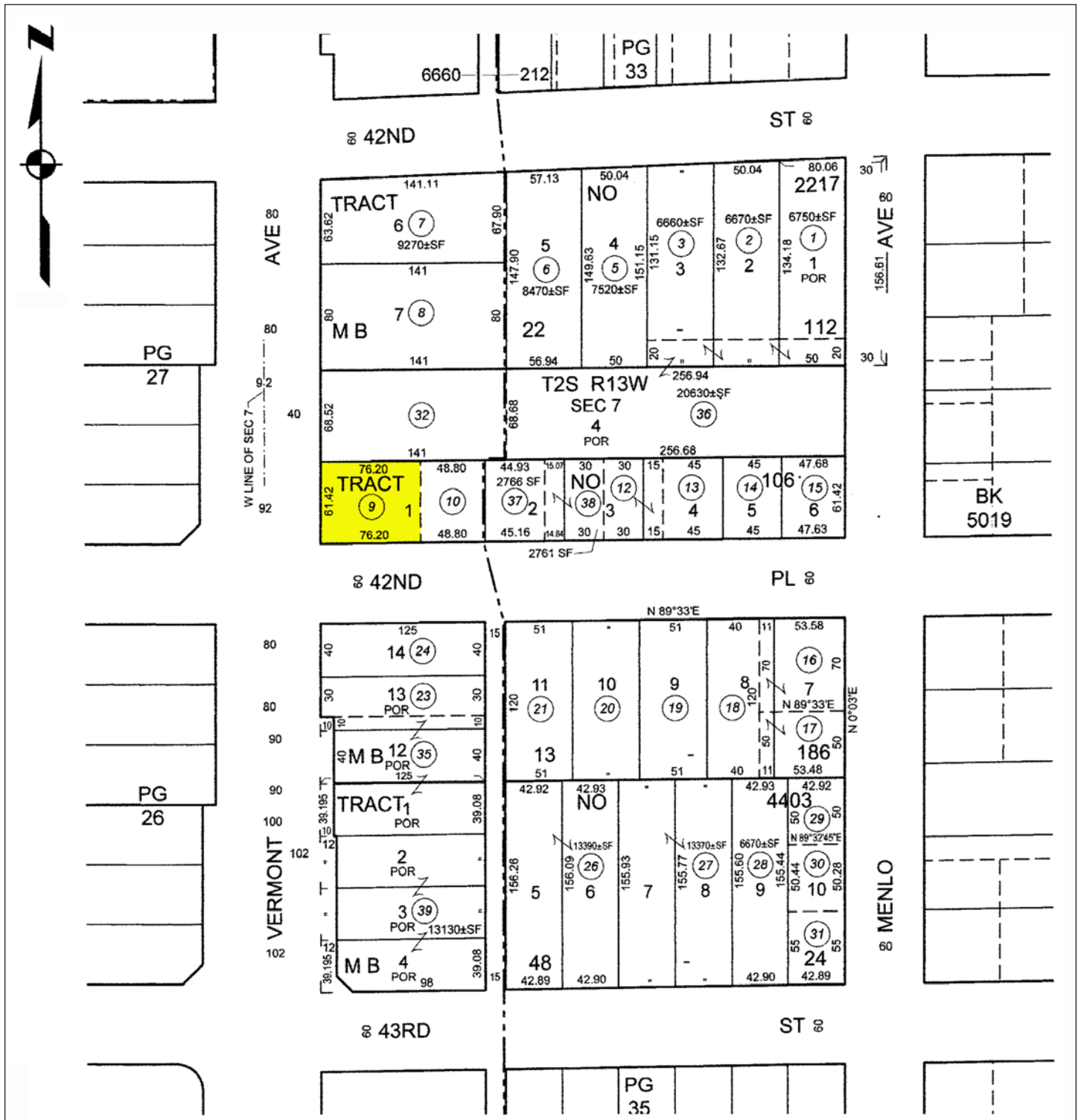
LIC. 02058572

The information contained herein is furnished by sources we deem reliable, but for which we assume no liability. It is given in confidence and with the understanding that all negotiations pertaining to the property be handled through the listing office. All measurements are approximate.

COMMERCIAL PROPERTY FOR SALE



COMMERCIAL PROPERTY FOR SALE



COMMERCIAL PROPERTY FOR SALE

