

For Lease Or For Sale

11,650 SF

- Freestanding building located at the intersection of East Main St and Robinson St
- Land size approx .65 acre
- Contact Charlie Warfield for pricing on sublease or sale of the building
- Major area tenants include Walgreens, Walmart, Goody's, Taco Bell, KFC, McDonalds, Hardee's, AutoZone, Cato, It's Fashion, Dollar Tree
- Traffic count: 14,000

2020 Demographics

Estimated Population

1 mile radius: 4,332
3 mile radius: 9,401
5 mile radius: 13,183

Est. Household Income

1 mile radius: \$ 63,840
3 mile radius: \$ 70,053
5 mile radius: \$ 72,190

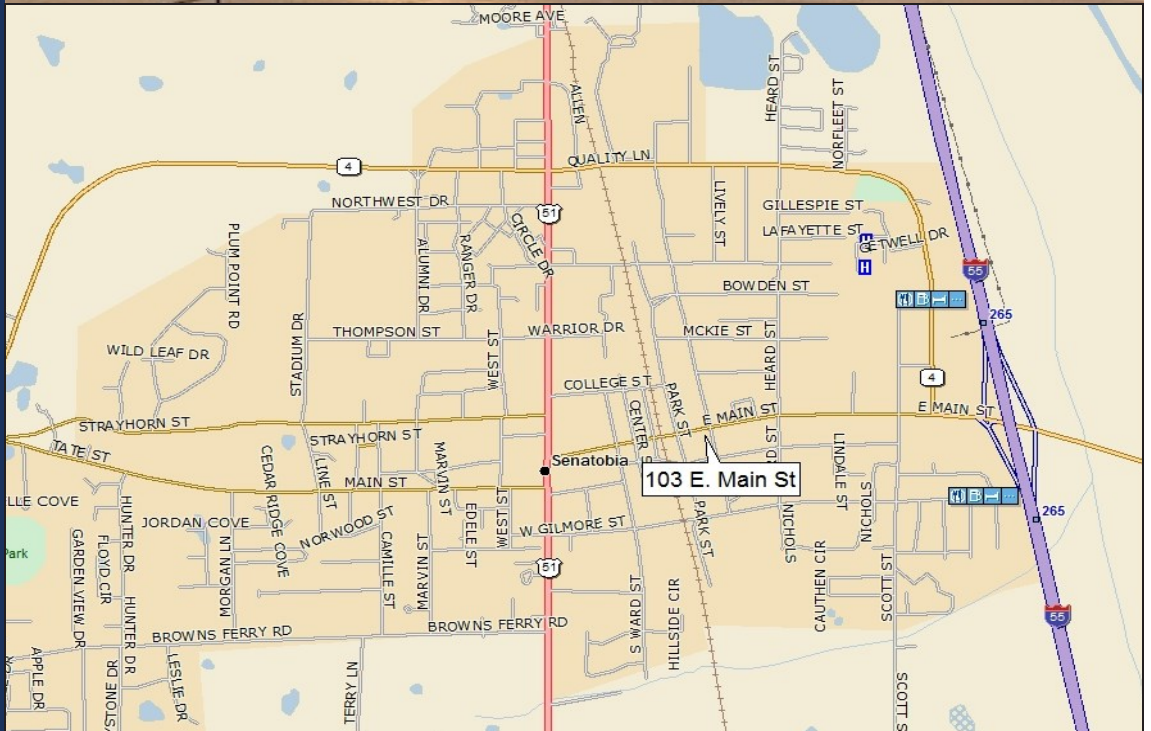
Estimated Median Age

1 mile radius: 28.49
3 mile radius: 32.04
5 mile radius: 34.98

Former Aaron's Location

103 East Main Street

SENATOBIA, MS



For more information and personal showing contact:

CHARLIE WARFIELD

Brookside Properties
2002 Richard Jones Rd, Ste C-200
Nashville, TN 37215
Mobile 615.330.9689
Office 615.467.3400
Fax 615.988-1547
cwarfield@brooksideproperties.com

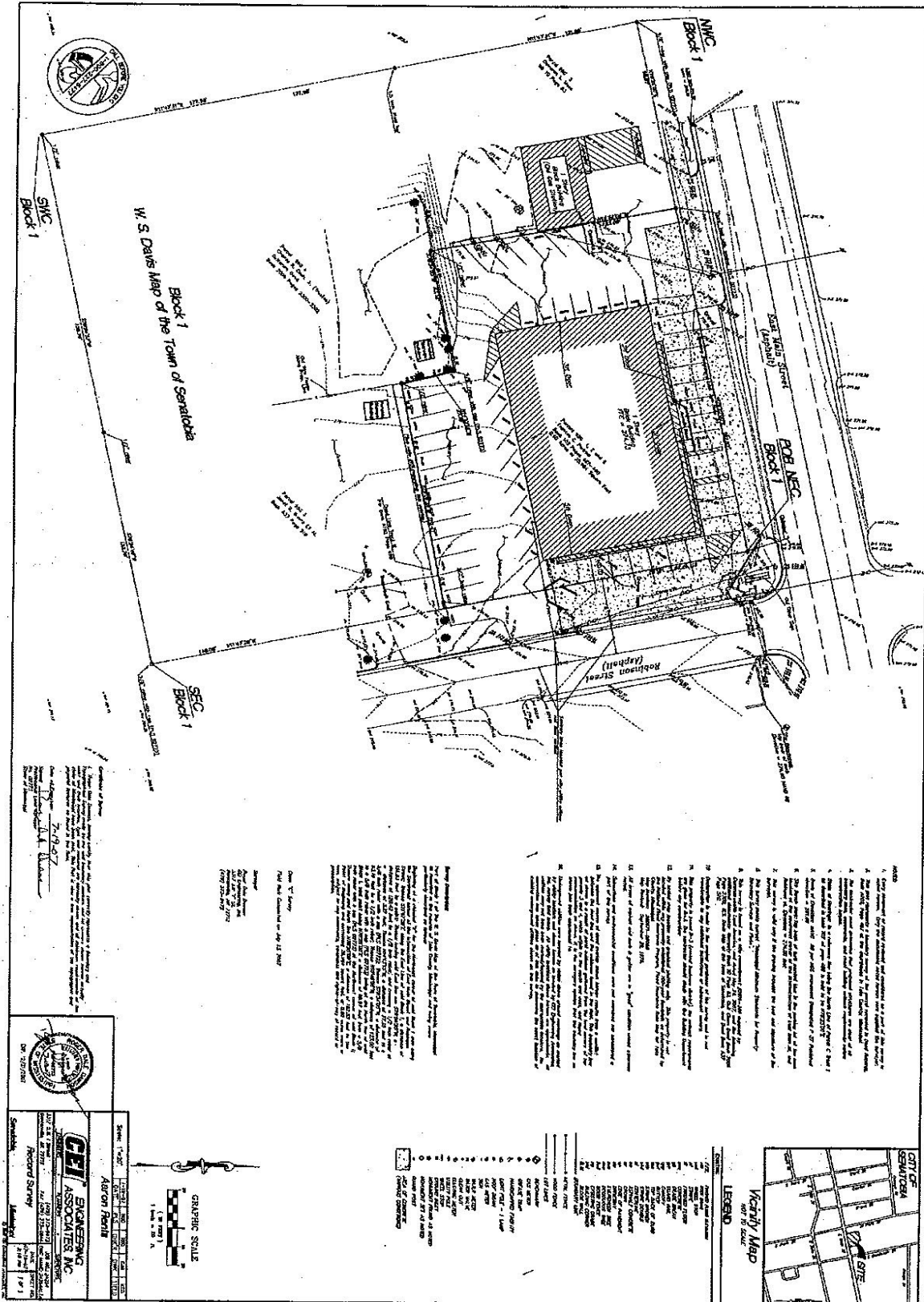


Former Aaron's Location

Senatobia, MS



2007 3928
Deed Book & Page



1. This plat is a true and correct copy of the original plat as filed in the office of the County Clerk of the County of Madison, Mississippi, and is a true and correct copy of the original plat as filed in the office of the County Clerk of the County of Madison, Mississippi, and is a true and correct copy of the original plat as filed in the office of the County Clerk of the County of Madison, Mississippi.

2. The original plat is on file in the office of the County Clerk of the County of Madison, Mississippi, and is a true and correct copy of the original plat as filed in the office of the County Clerk of the County of Madison, Mississippi.

3. The original plat is on file in the office of the County Clerk of the County of Madison, Mississippi, and is a true and correct copy of the original plat as filed in the office of the County Clerk of the County of Madison, Mississippi.

4. The original plat is on file in the office of the County Clerk of the County of Madison, Mississippi, and is a true and correct copy of the original plat as filed in the office of the County Clerk of the County of Madison, Mississippi.

5. The original plat is on file in the office of the County Clerk of the County of Madison, Mississippi, and is a true and correct copy of the original plat as filed in the office of the County Clerk of the County of Madison, Mississippi.

6. The original plat is on file in the office of the County Clerk of the County of Madison, Mississippi, and is a true and correct copy of the original plat as filed in the office of the County Clerk of the County of Madison, Mississippi.

7. The original plat is on file in the office of the County Clerk of the County of Madison, Mississippi, and is a true and correct copy of the original plat as filed in the office of the County Clerk of the County of Madison, Mississippi.

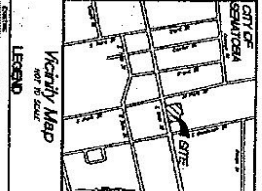
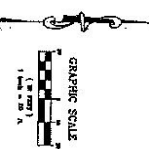
8. The original plat is on file in the office of the County Clerk of the County of Madison, Mississippi, and is a true and correct copy of the original plat as filed in the office of the County Clerk of the County of Madison, Mississippi.

9. The original plat is on file in the office of the County Clerk of the County of Madison, Mississippi, and is a true and correct copy of the original plat as filed in the office of the County Clerk of the County of Madison, Mississippi.

10. The original plat is on file in the office of the County Clerk of the County of Madison, Mississippi, and is a true and correct copy of the original plat as filed in the office of the County Clerk of the County of Madison, Mississippi.

CEI ENGINEERING ASSOCIATES, INC.
 1000 N. W. 11th St., Suite 100
 Ft. Lauderdale, FL 33304
 Phone: (954) 561-1111
 Fax: (954) 561-1112
 Email: ceia@ceieng.com
 www.ceieng.com

Aaron's Plat
 Record Survey
 2/18/07
 2007 3928



LEGEND

- 1. GITE
- 2. ELECTRIC
- 3. WATER
- 4. ...
- 5. ...
- 6. ...
- 7. ...
- 8. ...
- 9. ...
- 10. ...
- 11. ...
- 12. ...
- 13. ...
- 14. ...
- 15. ...
- 16. ...
- 17. ...
- 18. ...
- 19. ...
- 20. ...
- 21. ...
- 22. ...
- 23. ...
- 24. ...
- 25. ...
- 26. ...
- 27. ...
- 28. ...
- 29. ...
- 30. ...
- 31. ...
- 32. ...
- 33. ...
- 34. ...
- 35. ...
- 36. ...
- 37. ...
- 38. ...
- 39. ...
- 40. ...
- 41. ...
- 42. ...
- 43. ...
- 44. ...
- 45. ...
- 46. ...
- 47. ...
- 48. ...
- 49. ...
- 50. ...
- 51. ...
- 52. ...
- 53. ...
- 54. ...
- 55. ...
- 56. ...
- 57. ...
- 58. ...
- 59. ...
- 60. ...
- 61. ...
- 62. ...
- 63. ...
- 64. ...
- 65. ...
- 66. ...
- 67. ...
- 68. ...
- 69. ...
- 70. ...
- 71. ...
- 72. ...
- 73. ...
- 74. ...
- 75. ...
- 76. ...
- 77. ...
- 78. ...
- 79. ...
- 80. ...
- 81. ...
- 82. ...
- 83. ...
- 84. ...
- 85. ...
- 86. ...
- 87. ...
- 88. ...
- 89. ...
- 90. ...
- 91. ...
- 92. ...
- 93. ...
- 94. ...
- 95. ...
- 96. ...
- 97. ...
- 98. ...
- 99. ...
- 100. ...

Former Aaron's Location

Senatobia, MS



Former Aaron's Location

Senatobia, MS

