

FOR LEASE
OFFICE SPACE

NEWLY RENOVATED RIGHT OF YOUREE DR

333 Southfield Road
Shreveport, LA 71105



WWW.SEALYNET.COM

333 TEXAS STREET
SHREVEPORT, LA 71101
318.222.8700

GRANT SMITH

(T) 318.698.1116

(C) 318.470.3676

grants@sealynet.com

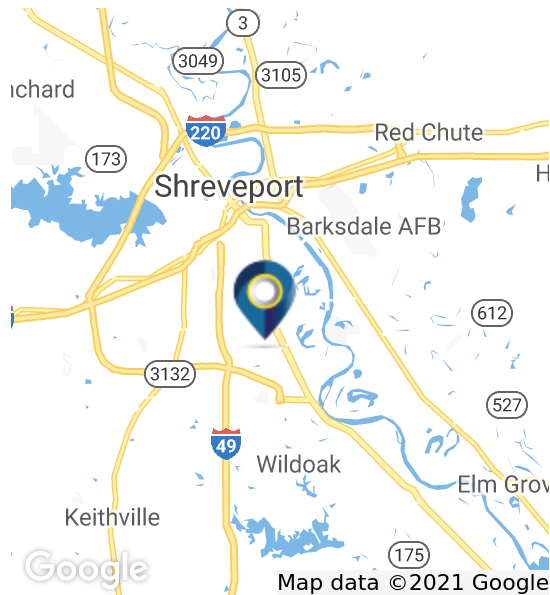




333 SOUTHFIELD ROAD

333 Southfield Road
Shreveport, LA 71105

NEWLY RENOVATED MODERN OFFICE SPACE NEAR YOUREE DR/SOUTHFIELD INTERSECTION



PROPERTY HIGHLIGHTS

- Ideally Located near Southfield Rd. Youree Dr. Intersection
- Bright Modern Interior
- 10 Offices
- Conference Room
- Ample Parking

LOCATION OVERVIEW

The property is ideally situated from Shreveport's busiest highway, adjacent to the Southfield Rd/ Youree Drive intersection. Conveniently located less than one mile from the Youree Drive/E 70th intersection, and 1.7 miles south of Kings Hwy, the subject feature an excellent location with surrounding eateries and businesses.



GRANT SMITH

(T) 318.698.1116
(C) 318.470.3676
grants@sealynet.com

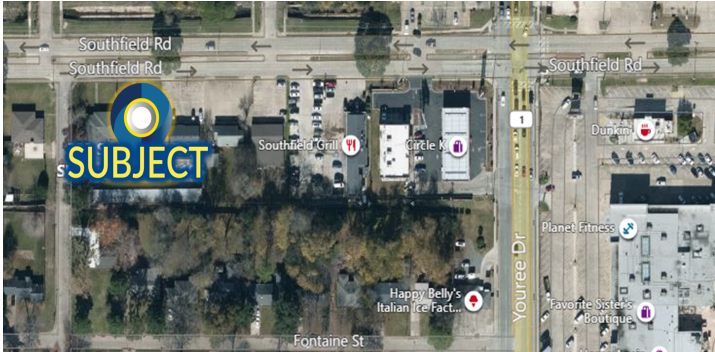
SEALY REAL ESTATE SERVICES, LLC
333 TEXAS STREET, SUITE 1050
SHREVEPORT, LA 71101

318.222.8700
WWW.SEALYNET.COM



333 SOUTHFIELD ROAD

333 Southfield Road
Shreveport, LA 71105



PROPERTY OVERVIEW

The office features a contemporary interior in excellent condition consisting of 10 offices, two file rooms, one conference room, a large foyer entry, a common space break room, and two ADA restrooms.

PROPERTY DETAILS

Property Name:	333 Southfield Road
Available SF:	3,400 SF
Building Size:	8,532 SF
Lot Size:	0.57 Acres
Lease Rate:	\$13.06 SF/yr (NNN)
Class:	A
No. of Stories:	1
Parking Spaces:	15
Zoning:	C-UC



AVAILABLE SPACES

SPACE	LEASE RATE	SIZE (SF)
335	\$13.06 SF/yr	3,400 SF



[Click Here for Additional Information](#)

All information set forth in this brochure has been obtained from the owner, personal observation, or other reliable sources. Sealy Real Estate Services, LLC does not guarantee the accuracy of this information and makes no representations or warranties, expressed or implied, in this brochure. Information contained herein is subject to change without notice.



GRANT SMITH
(T) 318.698.1116
(C) 318.470.3676
grants@sealynet.com

SEALY REAL ESTATE SERVICES, LLC
333 TEXAS STREET, SUITE 1050
SHREVEPORT, LA 71101

318.222.8700
WWW.SEALYNET.COM

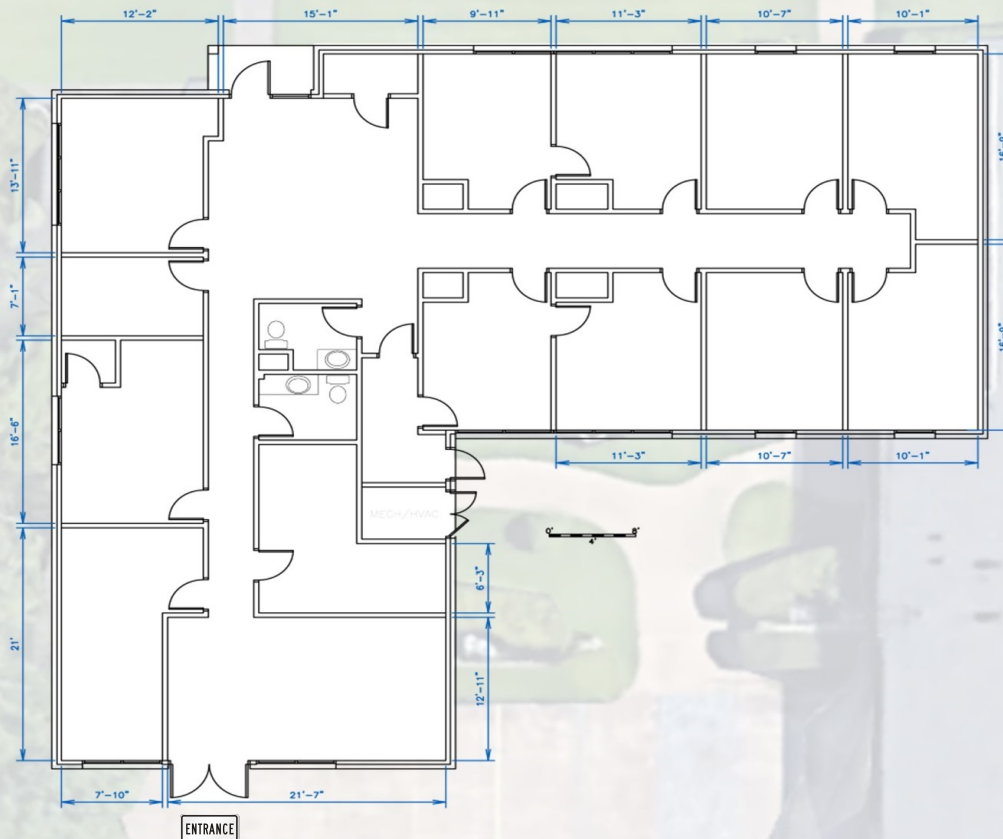


333 SOUTHFIELD ROAD

333 Southfield Road
Shreveport, LA 71105

Southfield Rd.

Glen Cove St.



GRANT SMITH
(T) 318.698.1116
(C) 318.470.3676
grants@sealynet.com

SEALY REAL ESTATE SERVICES, LLC
333 TEXAS STREET, SUITE 1050
SHREVEPORT, LA 71101

318.222.8700
WWW.SEALYNET.COM