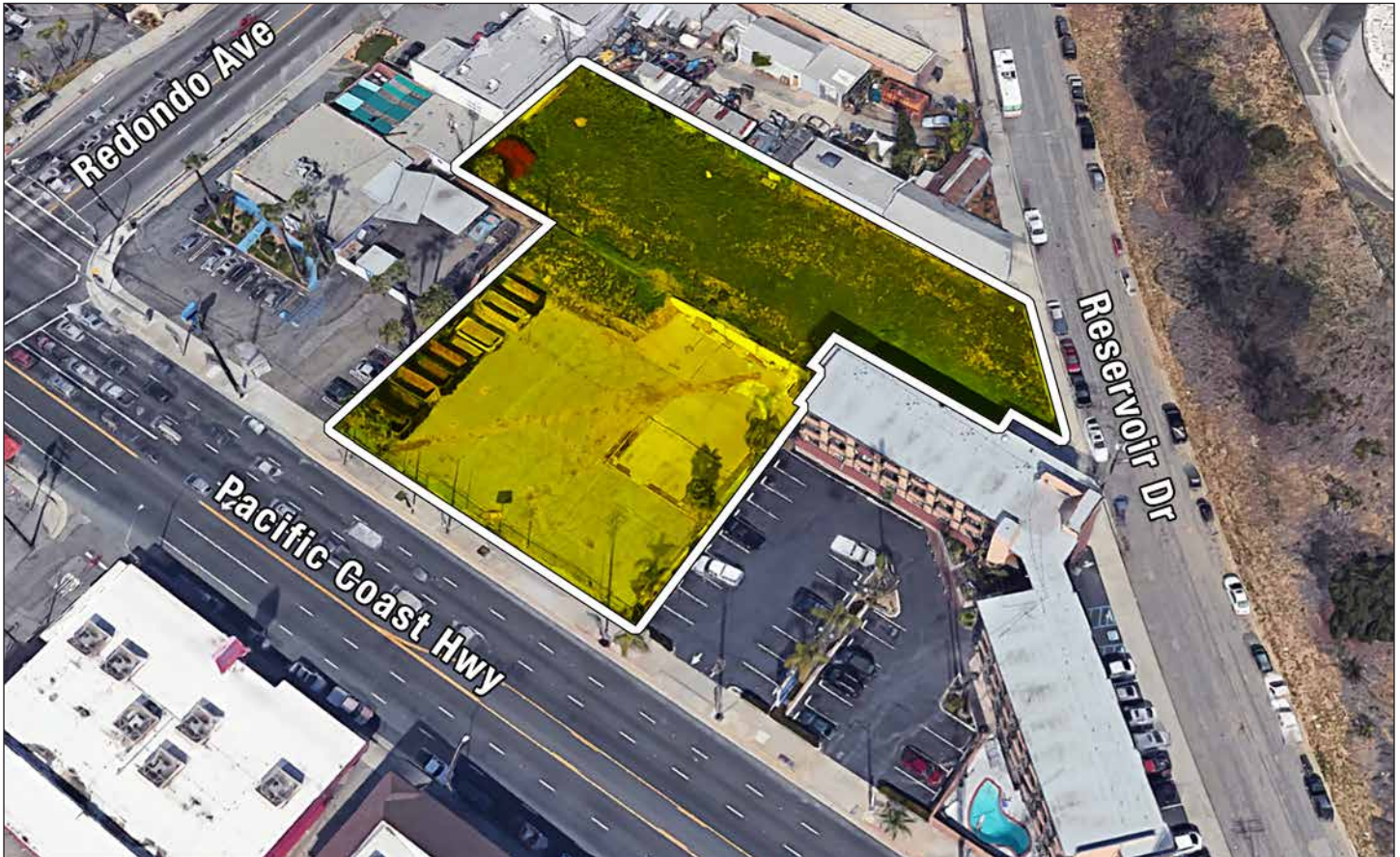


# LAND FOR SALE

## Development Site

39,586 SQ.FT. OF LAND



3527 E PACIFIC COAST HWY & 1811 W RESERVOIR DR, SIGNAL HILL, CA 90755

*Perfect for Commercial, Residential or Mixed-Use Development*

- Two-street frontage — Three adjacent parcels
- 39,586 sq.ft. of vacant land
- Ideal for shopping center, residential or mixed-use development, restaurant/fast food, retail, etc.
- Pacific Coast Highway exposure with 150 foot frontage
- Located in Opportunity Area
- Zoned SHCG\*
- Two miles west of California State University Long Beach
- Assessor's parcel number 7217-024-005,006,013
- Asking price: TBD (call broker)

*For More Information, Please Contact:*

**JESSE MCKENZIE**  
(213) 747-4156  
jesse@majorproperties.com  
CA BRE LIC. # 01939062

**BRADLEY A. LUSTER**  
(213) 747-4154  
brad@majorproperties.com  
CA BRE LIC. # 00913803

The information contained herein is furnished by sources we deem reliable, but for which we assume no liability. It is given in confidence and with the understanding that all negotiations pertaining to the property be handled through the listing office. All measurements are approximate.



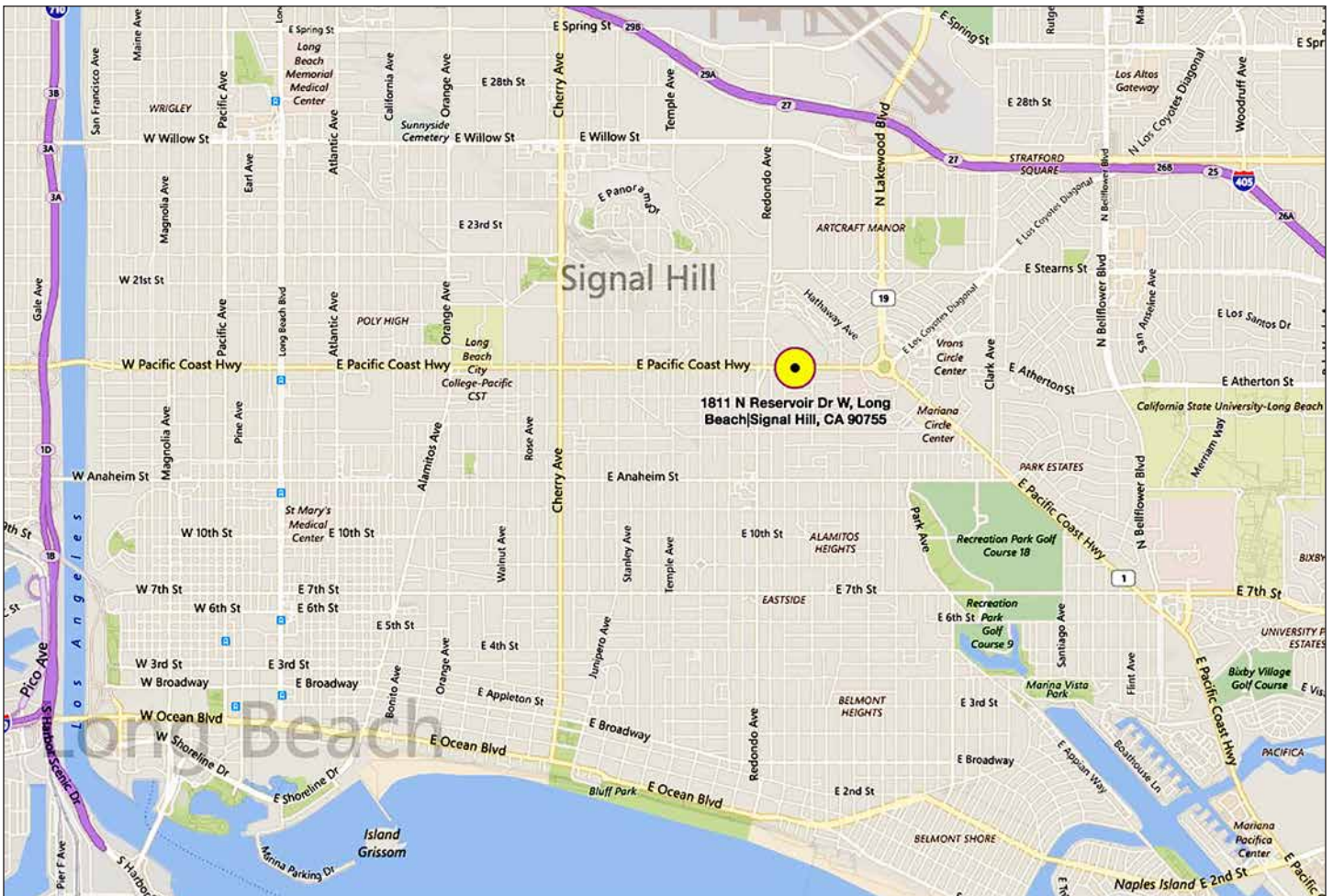
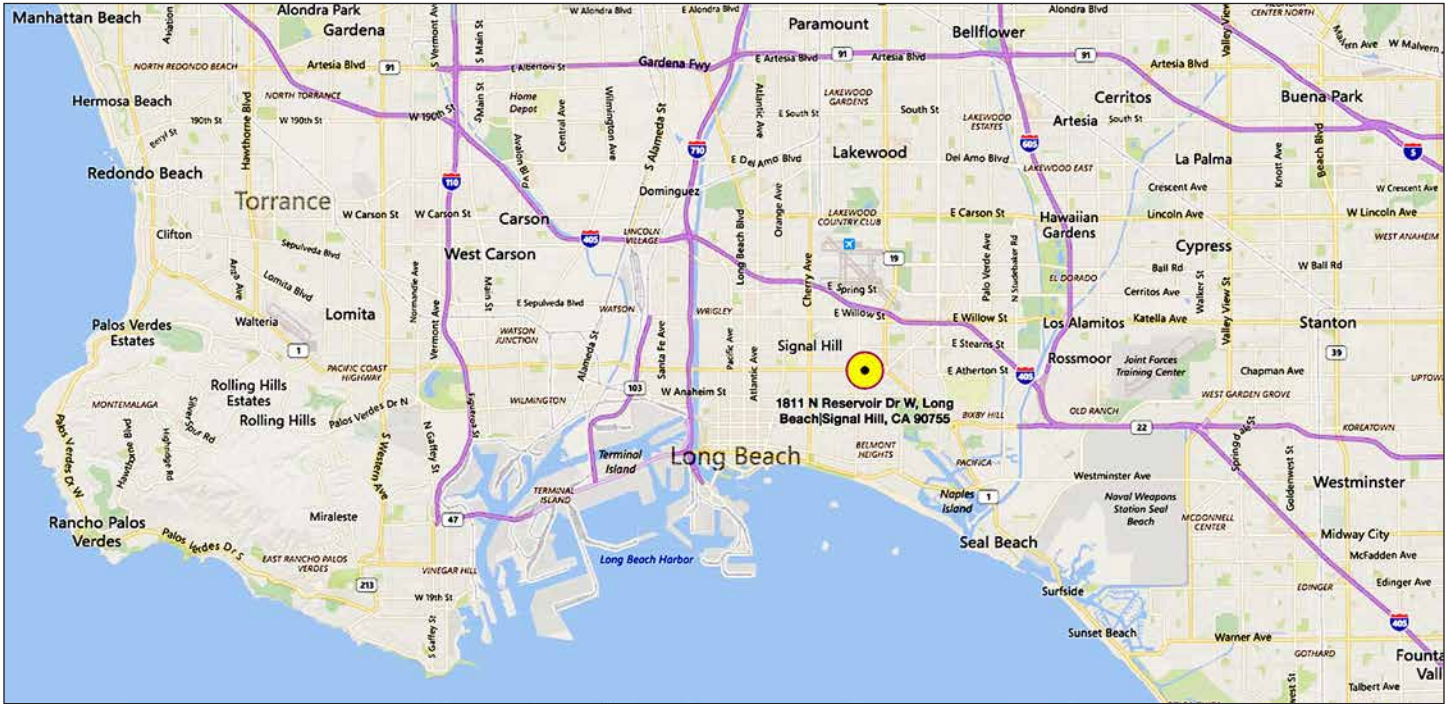
# LAND FOR SALE

3527 E PACIFIC COAST HWY, SIGNAL HILL, CA



# LAND FOR SALE

3527 E PACIFIC COAST HWY, SIGNAL HILL, CA



**MAJOR PROPERTIES**  
REAL ESTATE  
Commercial • Industrial • Residential

1200 West Olympic Boulevard, Los Angeles, California 90015  
213.747.4151 • fax 213.749.7972 • [www.majorproperties.com](http://www.majorproperties.com)

