

LEASE

1100 BUILDING

1100 NW GLISAN STREET, PORTLAND, OR 97209



Apex Real Estate Partners
415 NW 11th Avenue, Portland, OR 97209
503.595.2840 / www.apexcre.com

Max Schlesinger, Broker
971.703.4702
Max@apexcre.com

Matt Cole, Managing Director
503.595.2836
Matt@apexcre.com

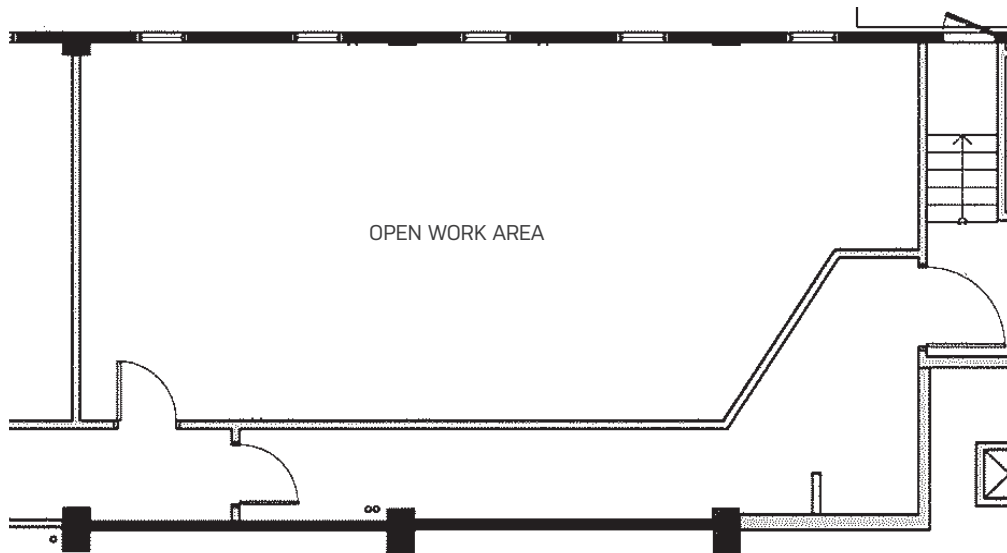


FOR LEASE

- » Suite 2A: ± 888 RSF
- » Asking Rate: Call for rates
- » Open, collaborative layout with beautiful hardwood floors
- » New lighting & expansive window lines offer abundant light throughout
- » Operable windows for great natural air flow

LOCATION

- » Just steps away from countless bars, restaurants and shopping in the Pearl District
- » Portland Streetcar and TriMet bus stops outside of 1100 Building
- » Parking available for tenants and clients
- » Easy access to I-405, Northwest and the Central Business District



PEARL DISTRICT LOCATION

The 1100 Building is in an excellent location in the heart of Portland's creative Pearl District.

It is situated along the same block as the TriMet bus line and Portland Streetcar. The building is mere steps from Portland's premiere mix of art galleries, restaurants, boutiques and amenities. The Pearl District provides the one of the most vibrant, dynamic and energetic entertainment areas within the City of Portland. It's central location makes it very accessible for employees and clients commuting from all over the Portland area with easy access to surrounding freeways, bridges and mass transit.



WALK SCORE 99

Walker's Paradise - Daily errands do not require a car



BIKE SCORE 97

Biker's Paradise - Daily errands can be accomplished on a bike



TRANSIT SCORE 92

Rider's Paradise - World class public transportation



TRIMET STOP (PARTIAL LIST)

TRIMET BUS

PORTLAND STREETCAR

TRIMET MAX