

LEASE

# SPHYNX BUILDING

CREATIVE OFFICE / RETAIL / MAKERSPACE

537 SE ALDER STREET  
PORTLAND, OREGON 97214



Apex Real Estate Partners  
412 NW Couch St #201, Portland, OR 97209  
503.595.2840 / [www.apexcre.com](http://www.apexcre.com)

Ali Davis, Associate Broker  
503.595.2833  
[Ali@apexcre.com](mailto:Ali@apexcre.com)

Bruce Garlinghouse, Associate Broker  
503.595.2829  
[Bruce@apexcre.com](mailto:Bruce@apexcre.com)

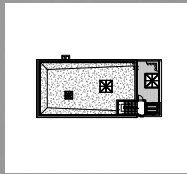
Nathan Sasaki, Executive Director  
503.595.2843  
[Nathan@apexcre.com](mailto:Nathan@apexcre.com)



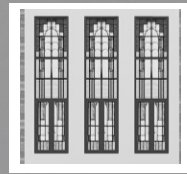
# SPHYNX BUILDING

*The Sphinx Building is undergoing an amazing transformation.*

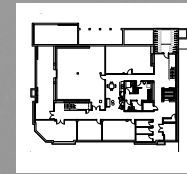
*Designed by local Baysinger Partners, the concept preserves  
Portland's historic charm while also  
creating a new, modern  
environment.*



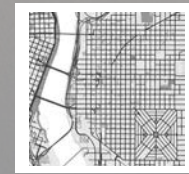
NEW ROOF TOP DECK OFFERS  
STUNNING VIEWS



HISTORIC STAINED GLASS  
WINDOWS



LOWER LEVEL  
AMENITY SPACE



CENTRAL EASTSIDE INDUSTRIAL  
DISTRICT LOCATION

# CREATIVE WORKSPACE

The Sphynx Building offers a tenant the unique opportunity to lease creative space specific to your needs. The building is ADA accessible and offers everything from office, retail to makerspace.

COMING AUGUST 2021

## LOWER FLOOR MAKERSPACE

- ± 298 - 4,429 RSF
- Convenient access to building amenities

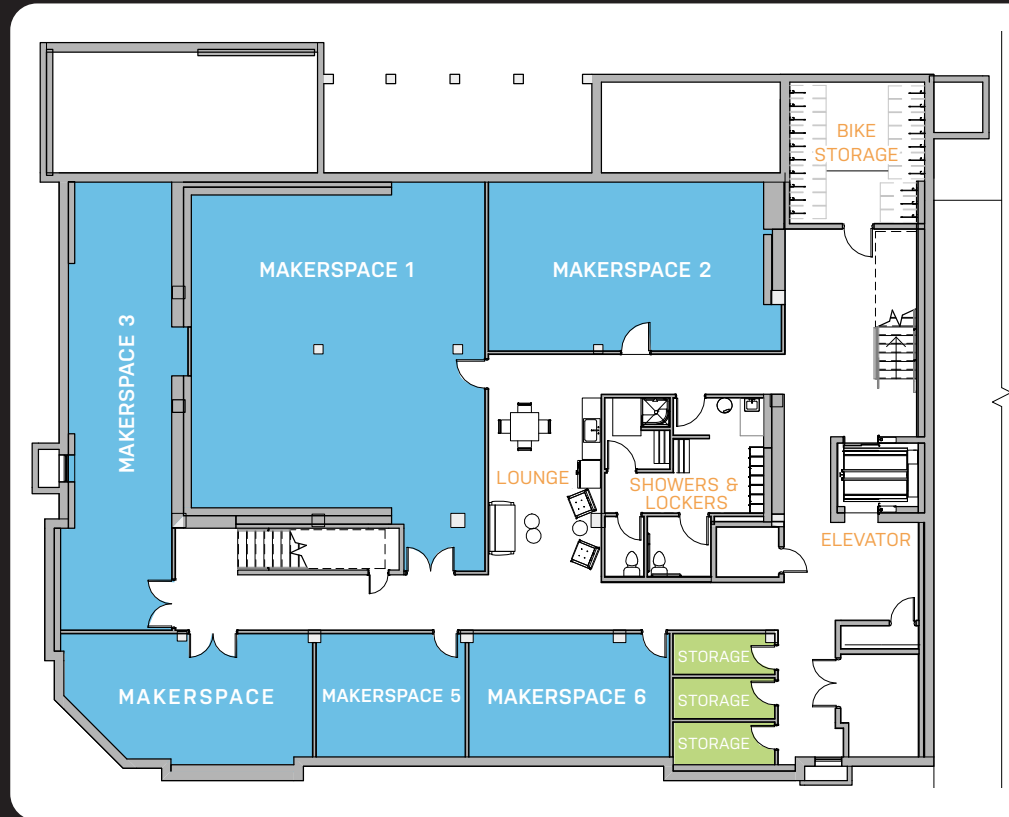
## FIRST FLOOR OFFICE

- Option 1: 1<sup>st</sup> Floor with Mezzanine ± 5,098 RSF
- Option 2: 1<sup>st</sup> Floor ± 1,390 RSF
- Total: ± 6,488 RSF

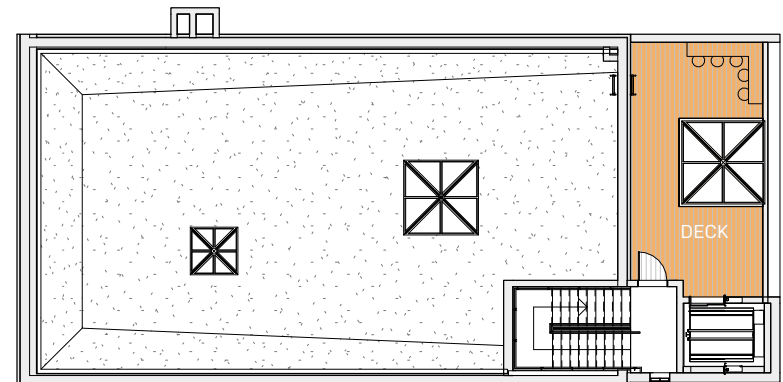
## SECOND FLOOR OFFICE

- Lower 2<sup>nd</sup> Floor: ± 2,978 RSF
- Upper 2<sup>nd</sup> Floor with Mezzanine: ± 4,209 RSF
- Total: ± 7,187 RSF

## LOWER FLOOR AMENITY & MAKERSPACE

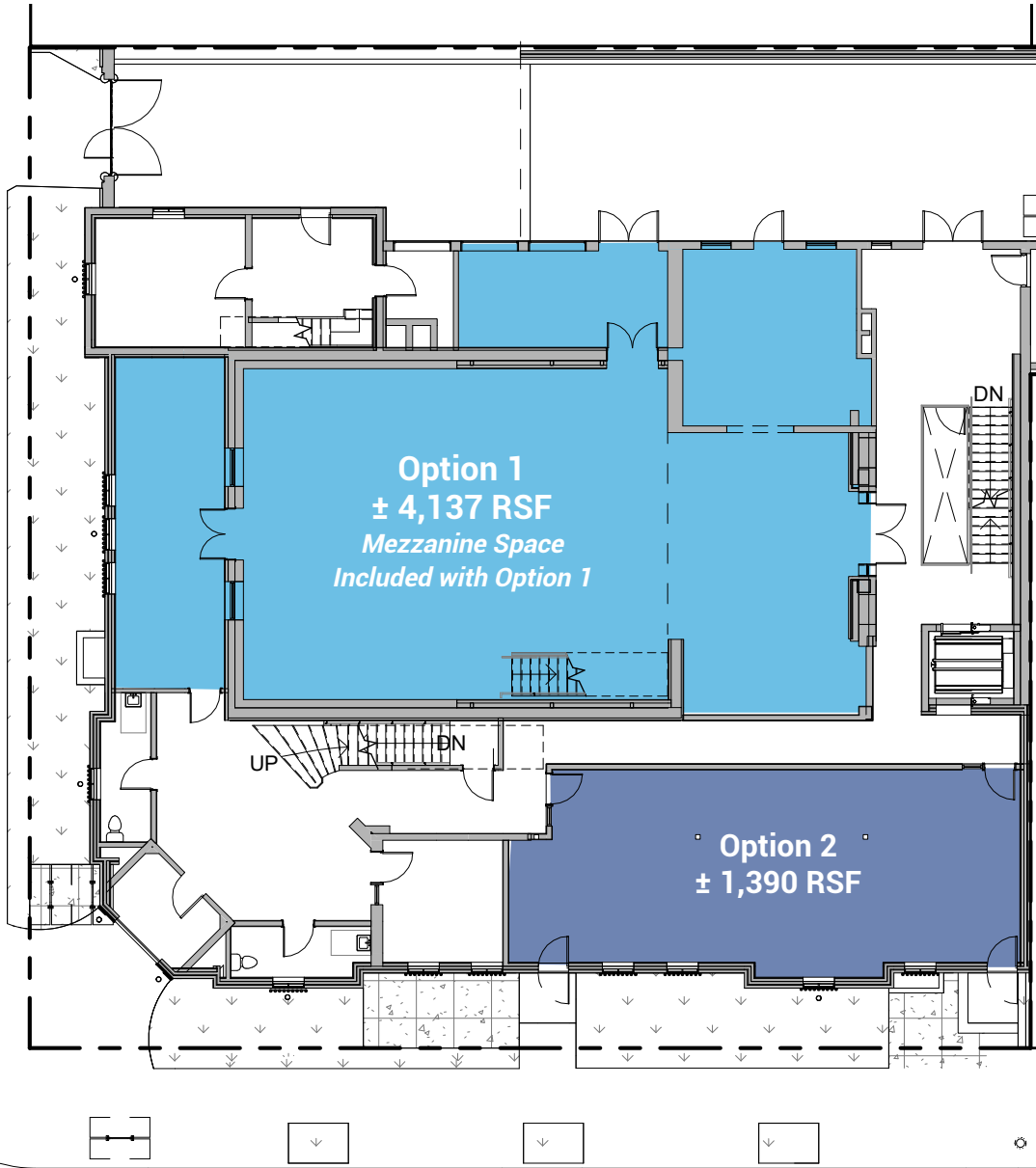


## ROOF TOP DECK

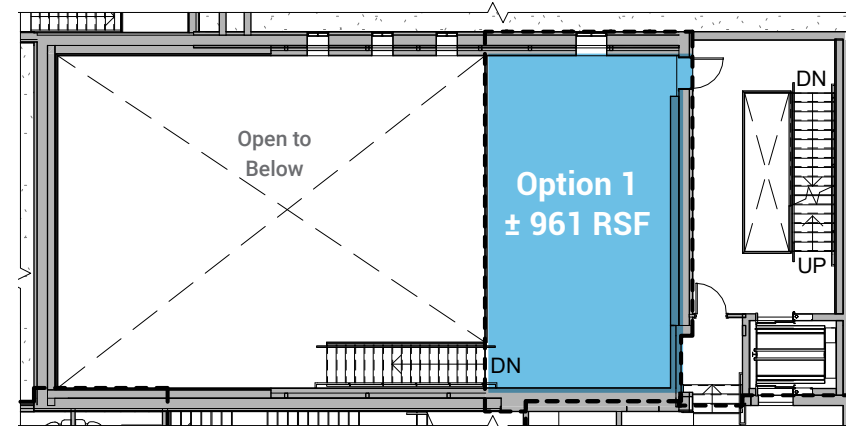


# FLOOR PLANS

## 1<sup>ST</sup> FLOOR

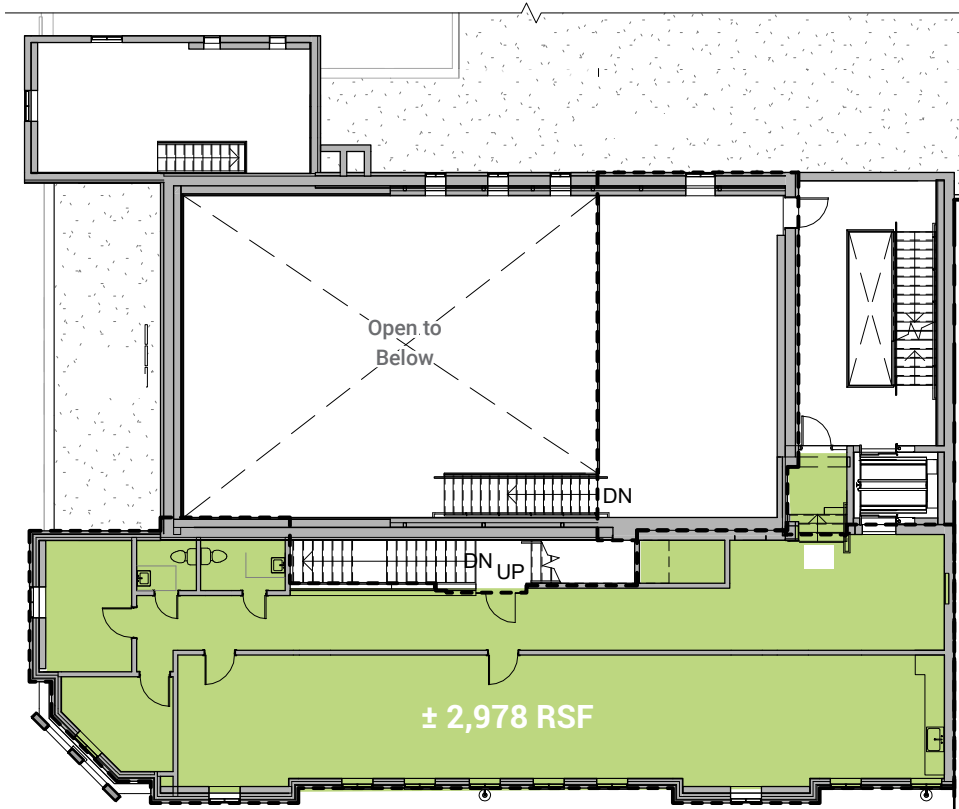


## 1<sup>ST</sup> FLOOR MEZZANINE

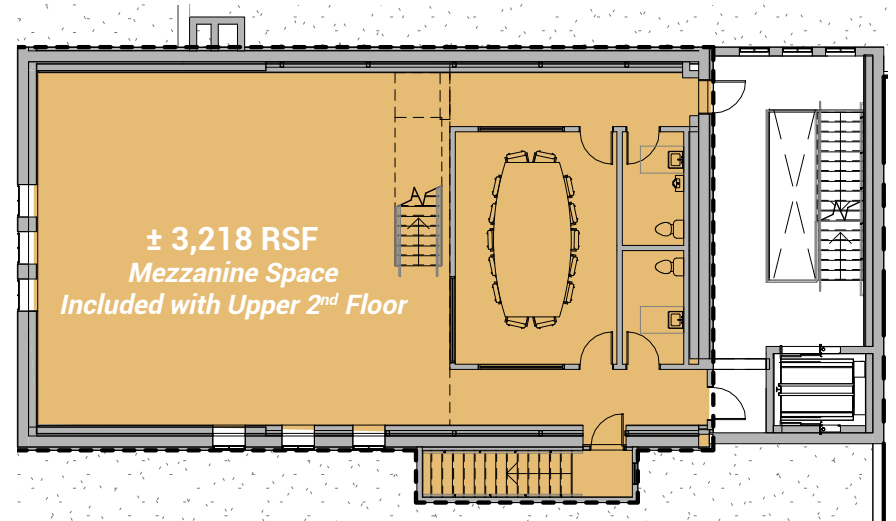


# FLOOR PLANS

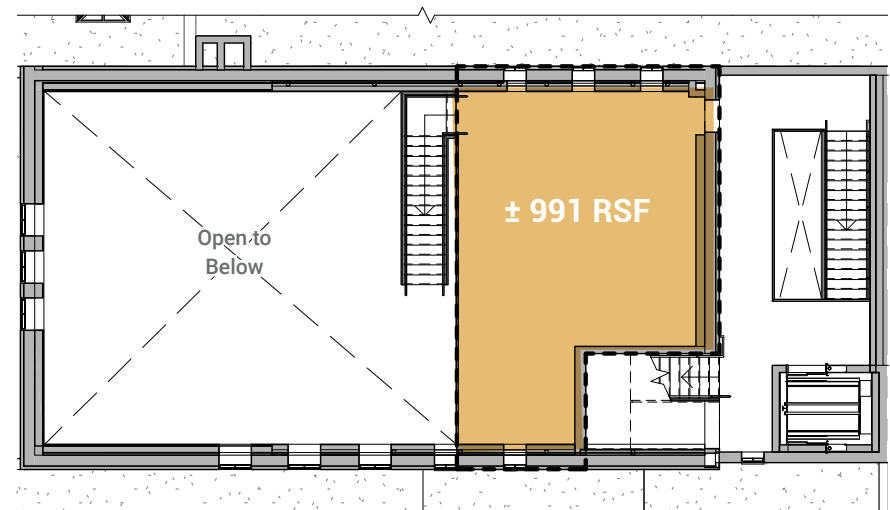
## LOWER 2<sup>ND</sup> FLOOR



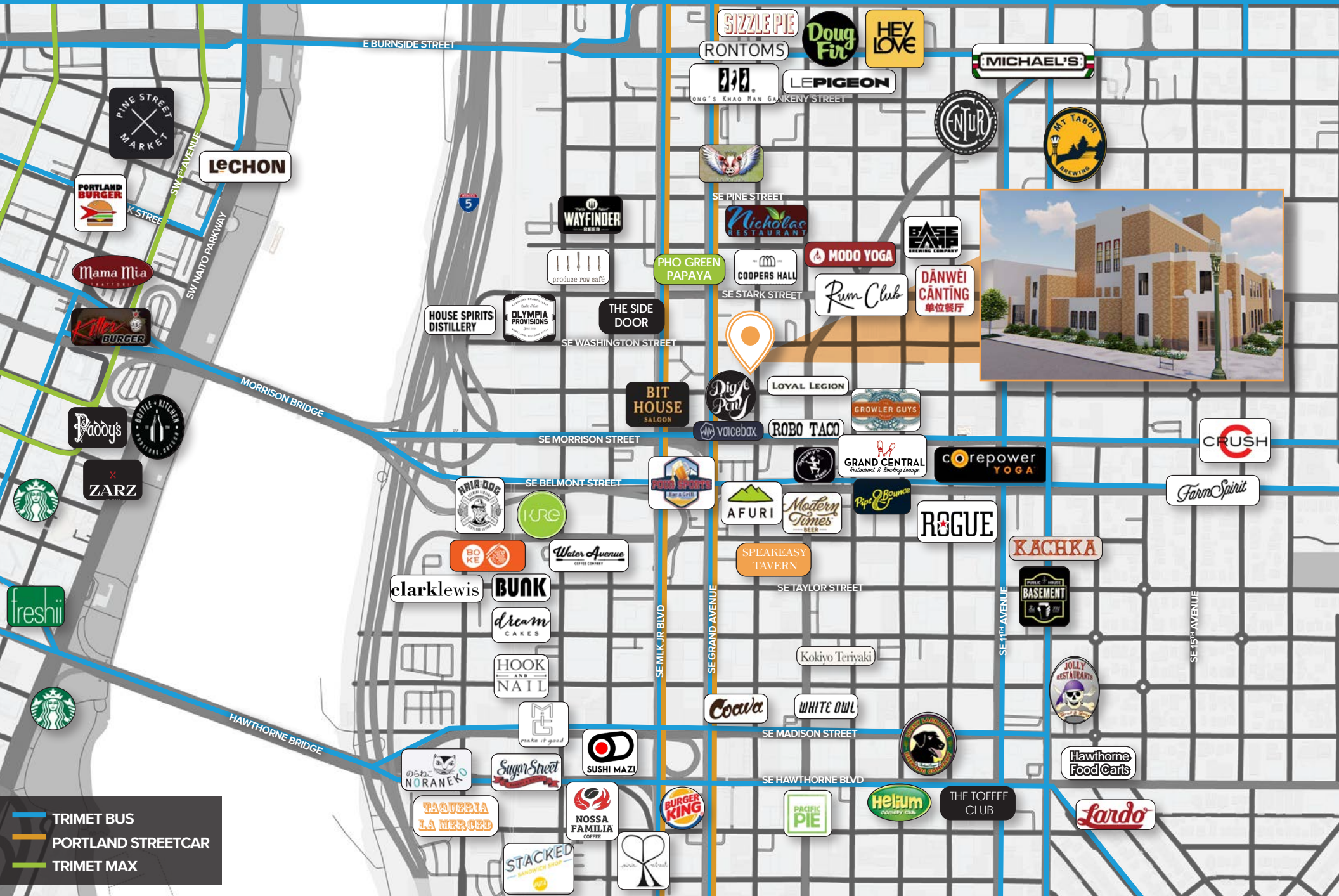
## UPPER 2<sup>ND</sup> FLOOR



## UPPER 2<sup>ND</sup> FLOOR MEZZANINE



# CLOSE-IN SOUTHEAST LOCATION



No warranty or representation, express or implied, is made as to the accuracy of the information contained herein, and same is submitted subject to errors, omissions, change of price, rental or other conditions, withdrawal without notice, and to any special listing condition imposed by our principals.