

WESTPORT BUSINESS PARK 2501

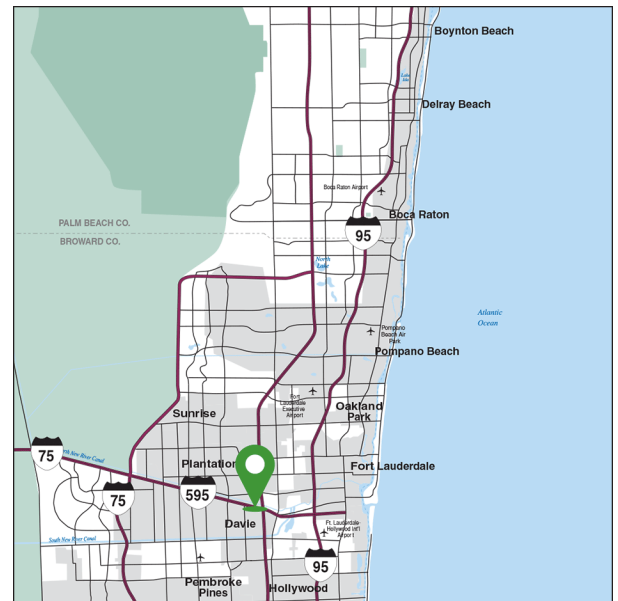
2501 Davie Rd., Davie, FL 33317



PROPERTY HIGHLIGHTS

- 30,925-square-foot warehouse
- Rear load
- 18' minimum clear height
- 5 dock doors
- Standard sprinklers
- 4.30 spaces per 1,000 square feet parking ratio

PROPERTY LOCATION



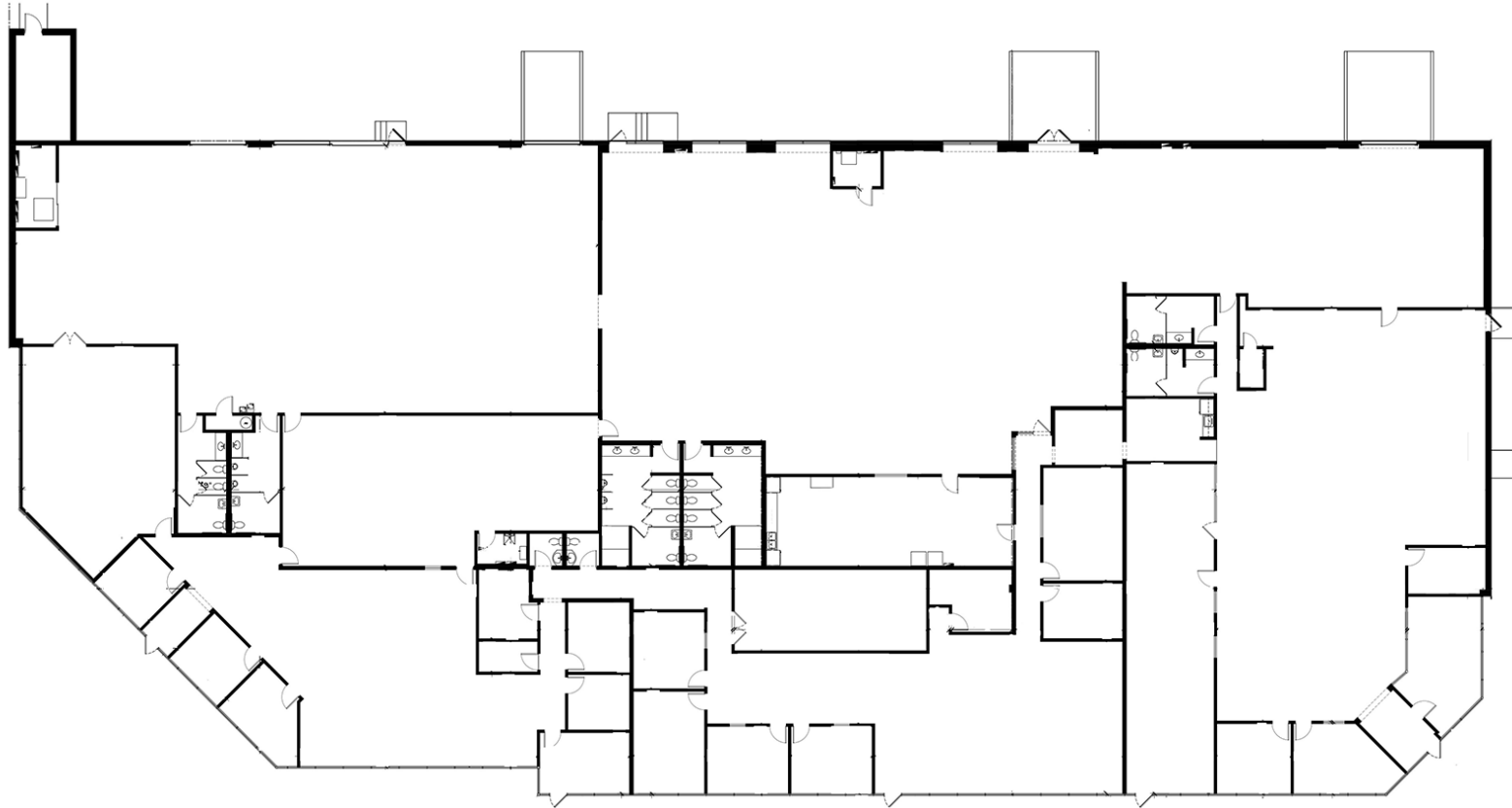
LOCAL MARKET CONTACT

David Loudenslager | 954.453.5683 | david.loudenslager@dukerealty.com



WESTPORT BUSINESS PARK 2501

2501 Davie Rd., Davie, FL 33317



Westport 2501

30,925 SF

LOCAL MARKET CONTACT

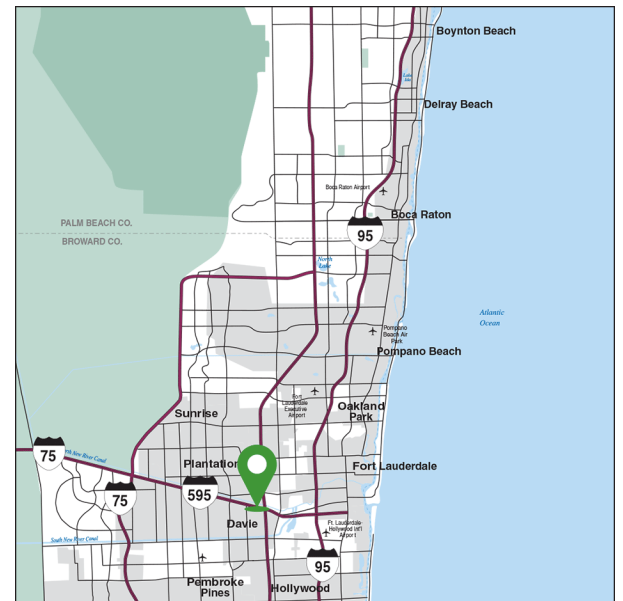
David Loudenslager | 954.453.5683 | david.loudenslager@dukerealty.com



PARK HIGHLIGHTS

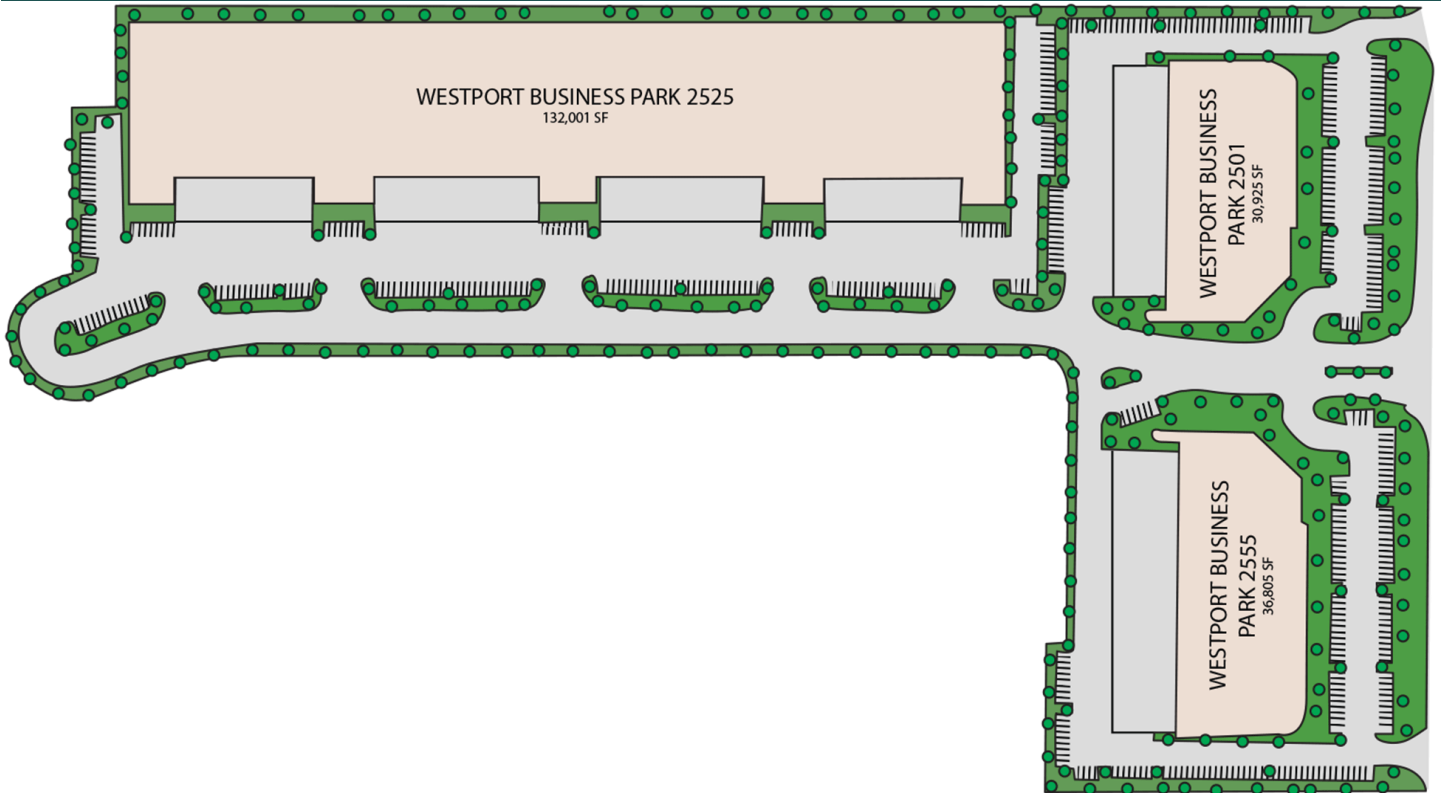
- 3 Building Complex consisting of Office/Flex and Warehouse/Distribution totaling 199,731 sf
- Building Three is a Warehouse/Distribution Facility of 132,001 sf
- 24' Clear Height
- Tilt-wall construction
- Immediate Access to I-595; Quick Access to I-95, I-75, and Florida's Turnpike
- Located in a Free Trade Zone

PARK LOCATION



LOCAL MARKET CONTACT

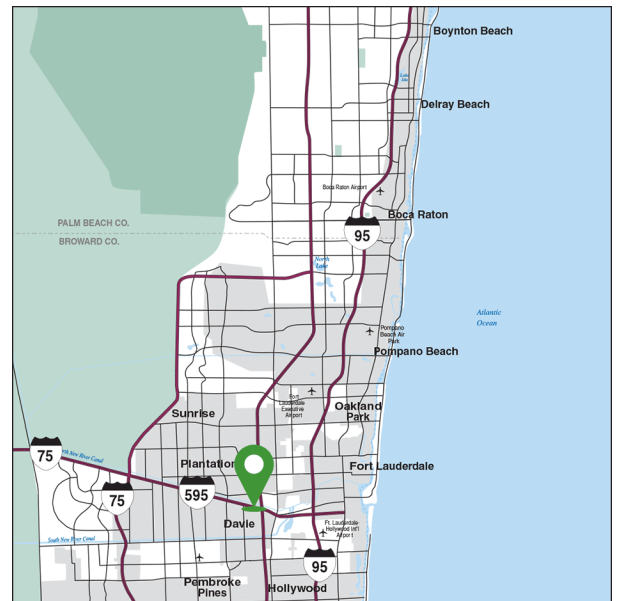
David Loudenslager | 954.453.5683 | david.loudenslager@dukerealty.com



PARK HIGHLIGHTS

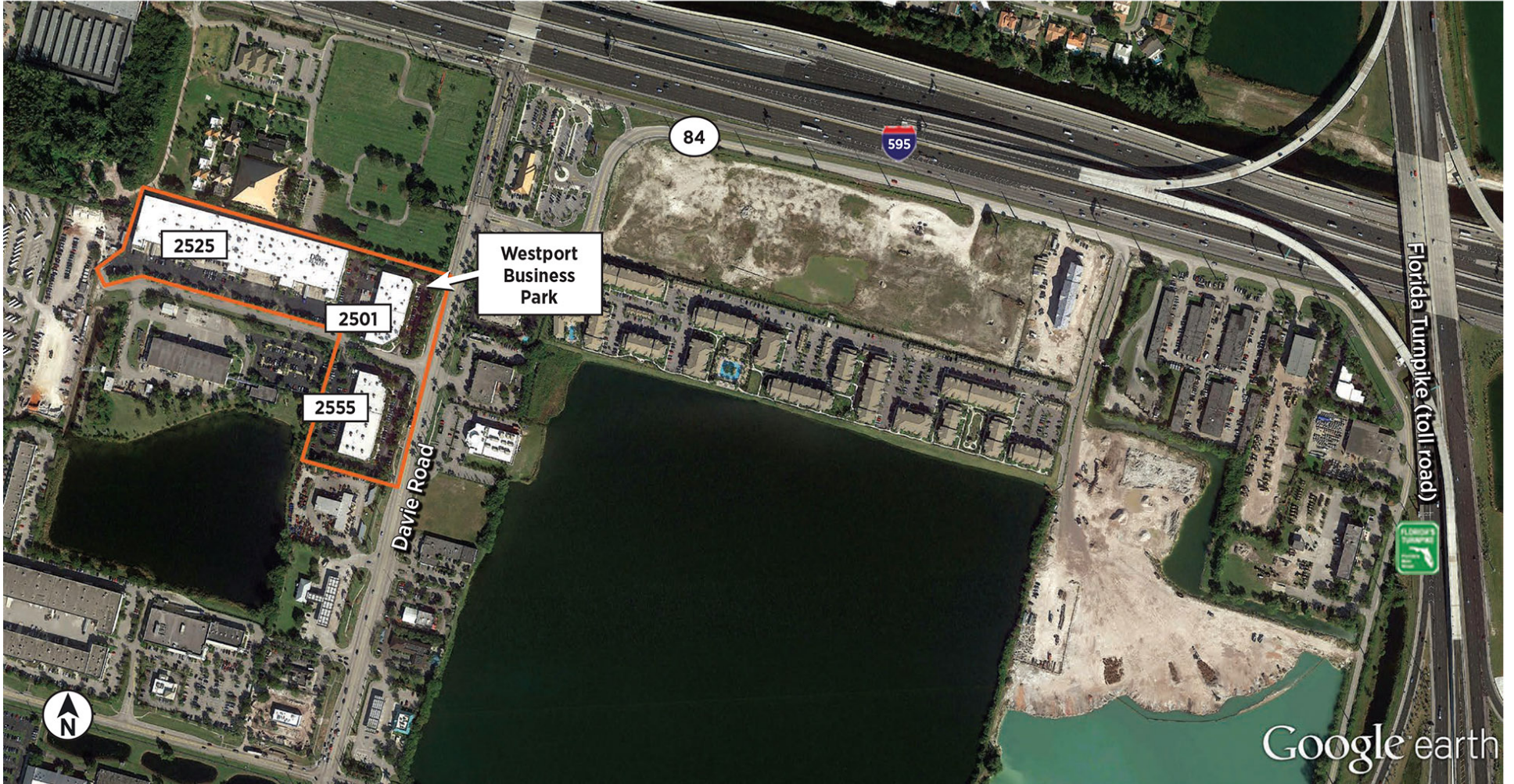
- 3 Building Complex consisting of Office/Flex and Warehouse/Distribution totaling 199,731 sf
- Building Three is a Warehouse/Distribution Facility of 132,001 sf
- 24' Clear Height
- Tilt-wall construction
- Immediate Access to I-595; Quick Access to I-95, I-75, and Florida's Turnpike
- Located in a Free Trade Zone

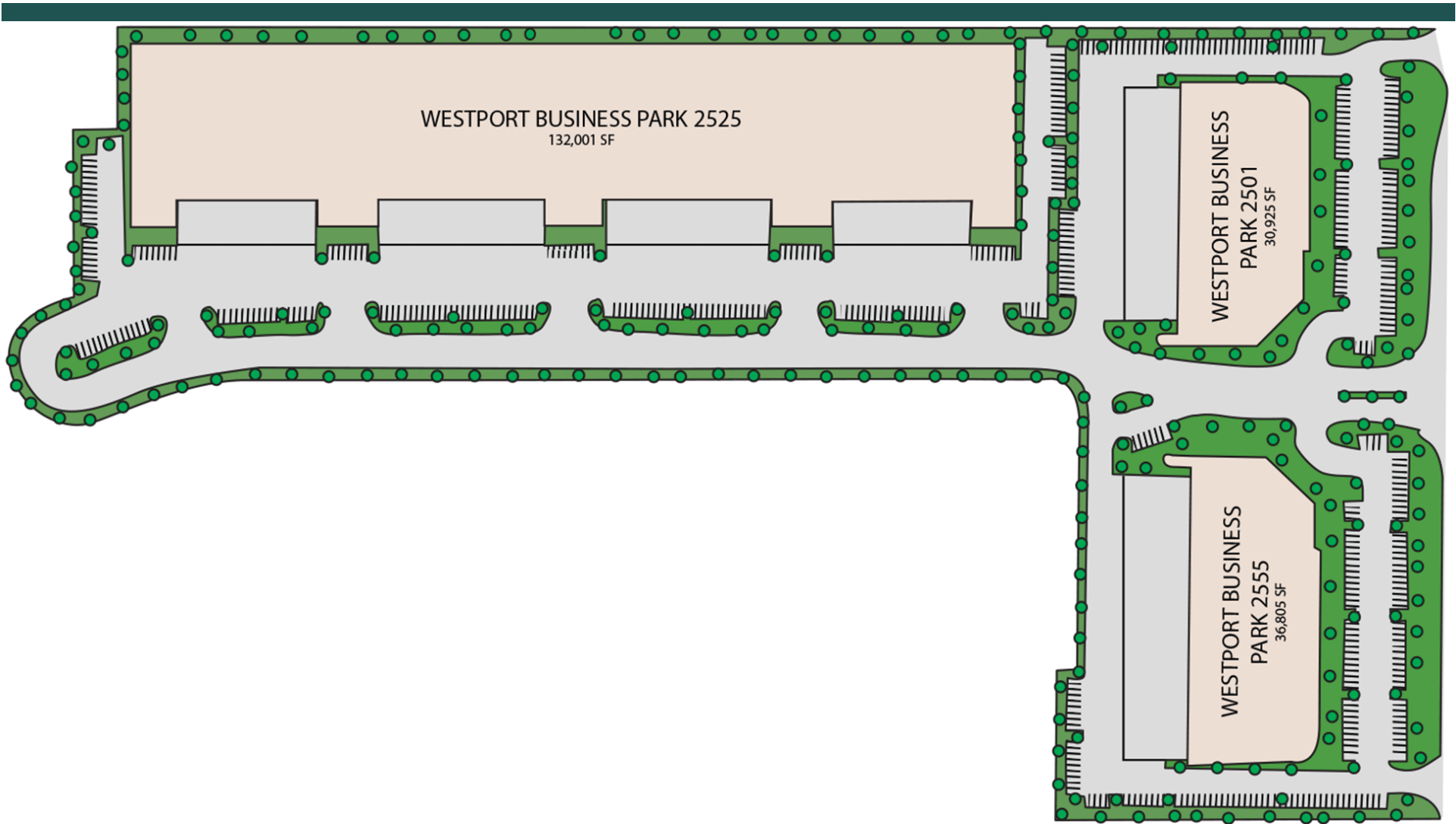
PARK LOCATION



LOCAL MARKET CONTACT

David Loudenslager | 954.453.5683 | david.loudenslager@dukerealty.com





LOCAL MARKET CONTACT

David Loudenslager | 954.453.5683 | david.loudenslager@dukerealty.com