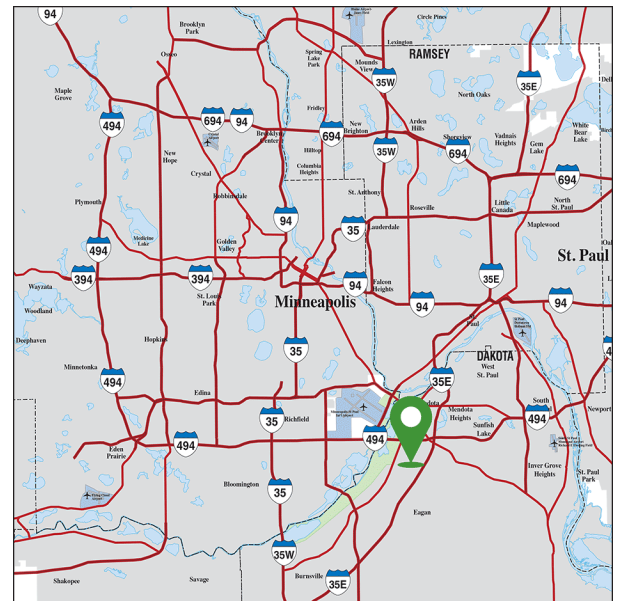




## PROPERTY HIGHLIGHTS

- 32,896 square feet available; 11,838 square feet of office
- End cap space
- 24' clear height
- 205' depth
- 40' x 40' column spacing
- 8 docks; 1 drive-in door
- ESFR sprinkler system
- 480-volt 200-amp 3-phase service
- Immediate access to I-494, I-35E, Highway 13 and Highway 55
- Minutes from Minneapolis-St. Paul International Airport

## PROPERTY LOCATION



### LOCAL MARKET CONTACT

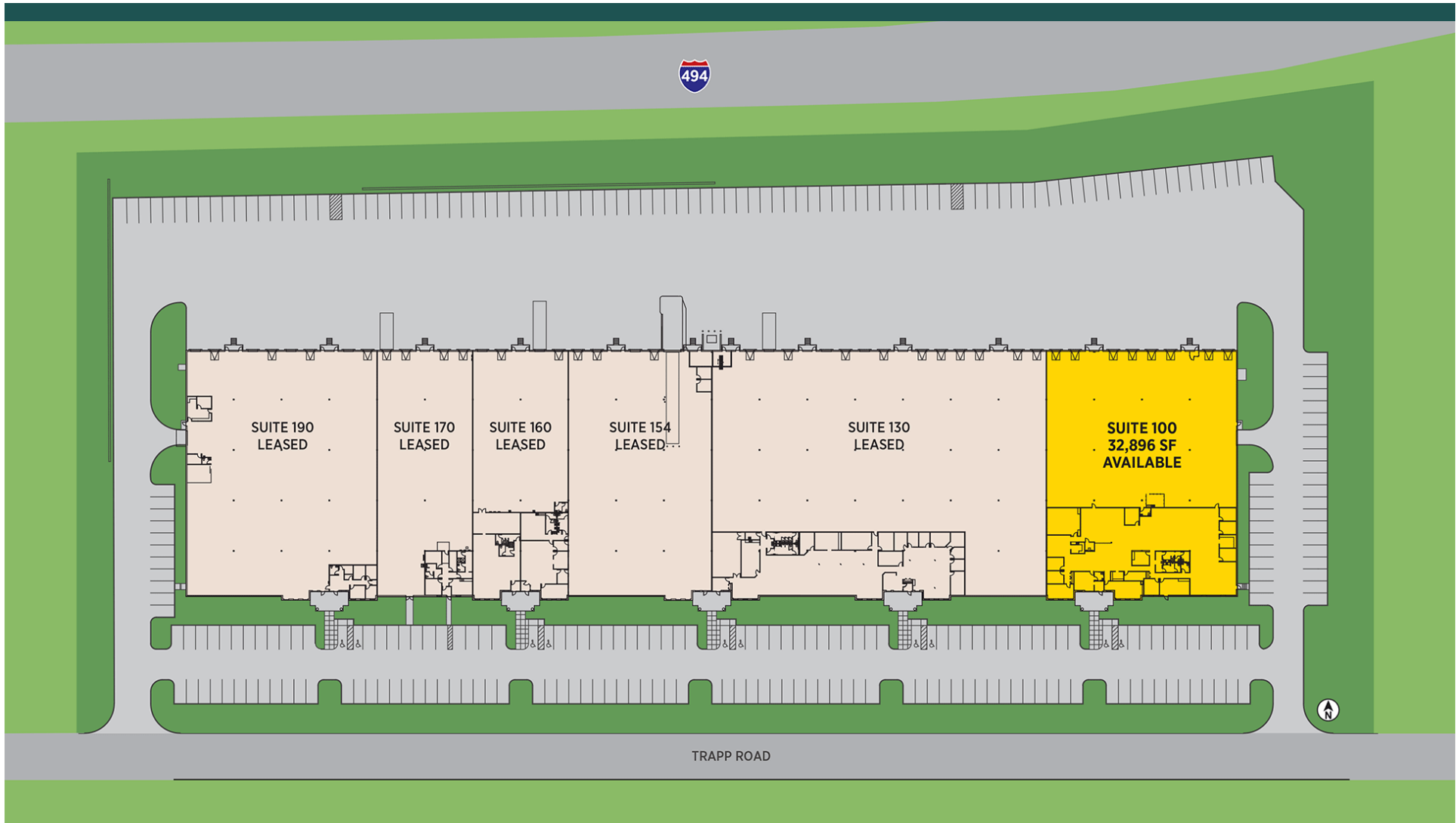
Susan Bergdoll | 847.232.5420 | susan.bergdoll@dukerealty.com



**CUSHMAN &  
WAKEFIELD**  
NorthMarq

# TRAPP 1245

1245 Trapp Road, Eagan, MN 55121



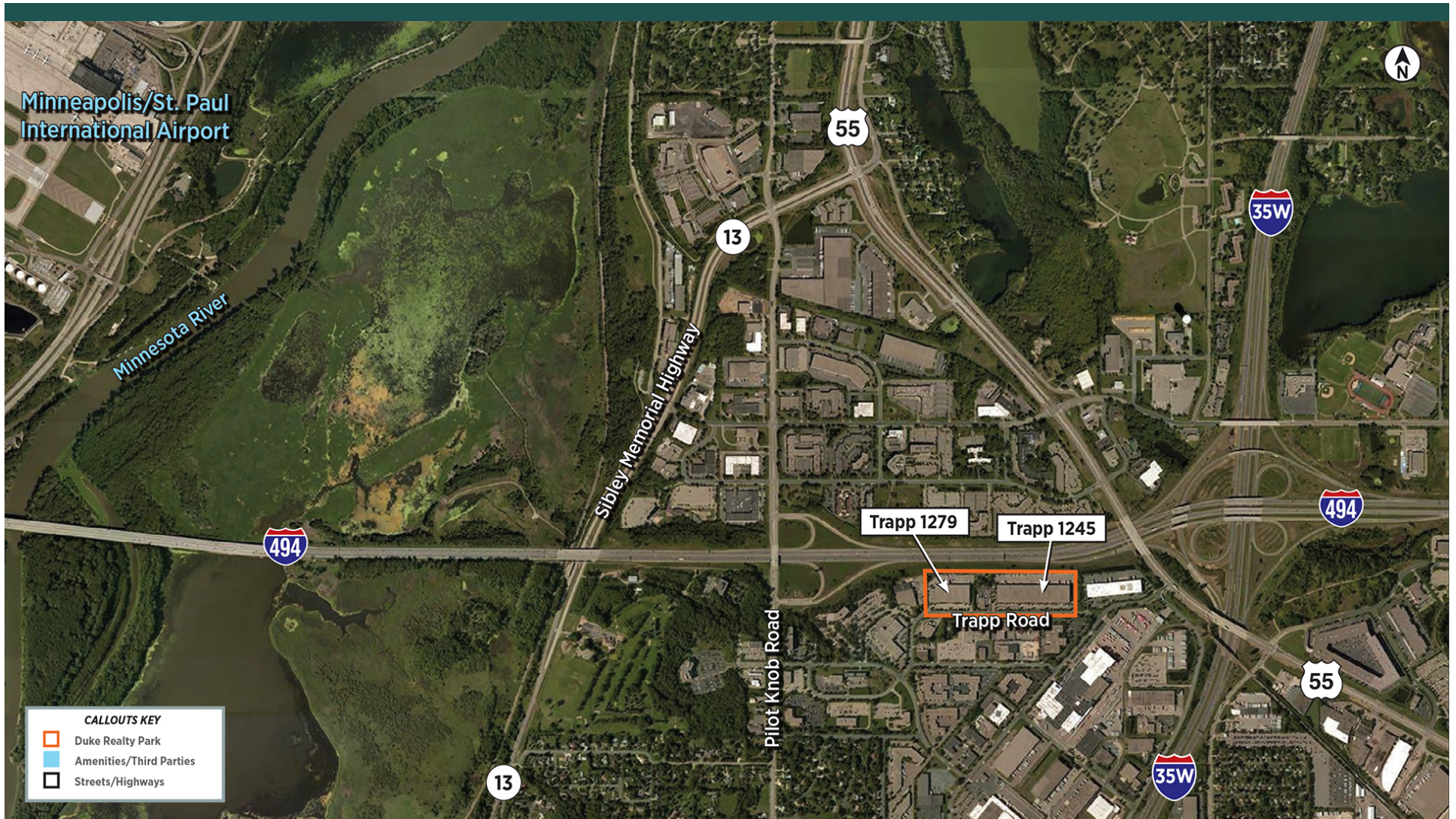
**LOCAL MARKET CONTACT**

Susan Bergdoll | 847.232.5420 | [susan.bergdoll@dukerealty.com](mailto:susan.bergdoll@dukerealty.com)



# TRAPP ROAD COMMERCE CENTER

Hwy 494 & Hwy 35E, Eagan, MN 55121



LOCAL MARKET CONTACT  
Susan Bergdoll | 847.232.5420 | susan.bergdoll@dukerealty.com

