

# 405 EXPANSION BOULEVARD

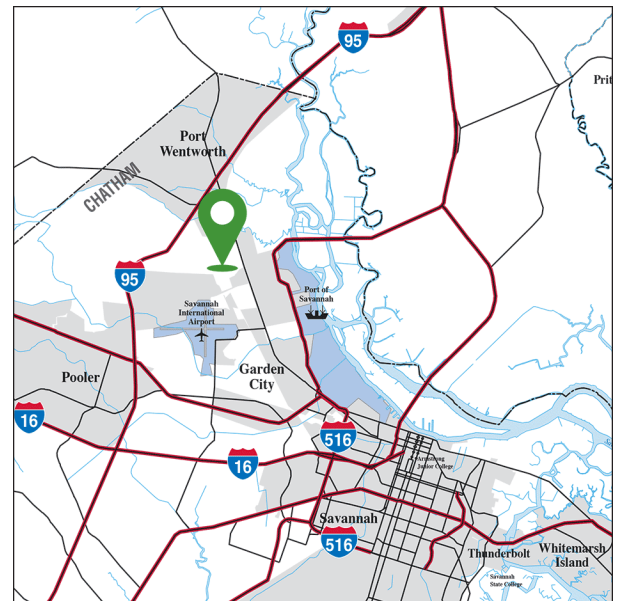
405 Expansion Blvd., Port Wentworth, GA 31407



## PROPERTY HIGHLIGHTS

- 116,250-square-foot industrial building
- 2,170-square-foot office
- 465' x 250'
- 27' clear height in center; 25' clear height at eaves
- 30' x 62-6" column spacing
- 12 - 9' x 10' dock doors
- 1 - 16' x 16' drive-in door
- 15 trailer parking spaces
- 20 car parking spaces
- ESFR sprinkler system
- 6" slab
- 800-amp electrical device

## PROPERTY LOCATION

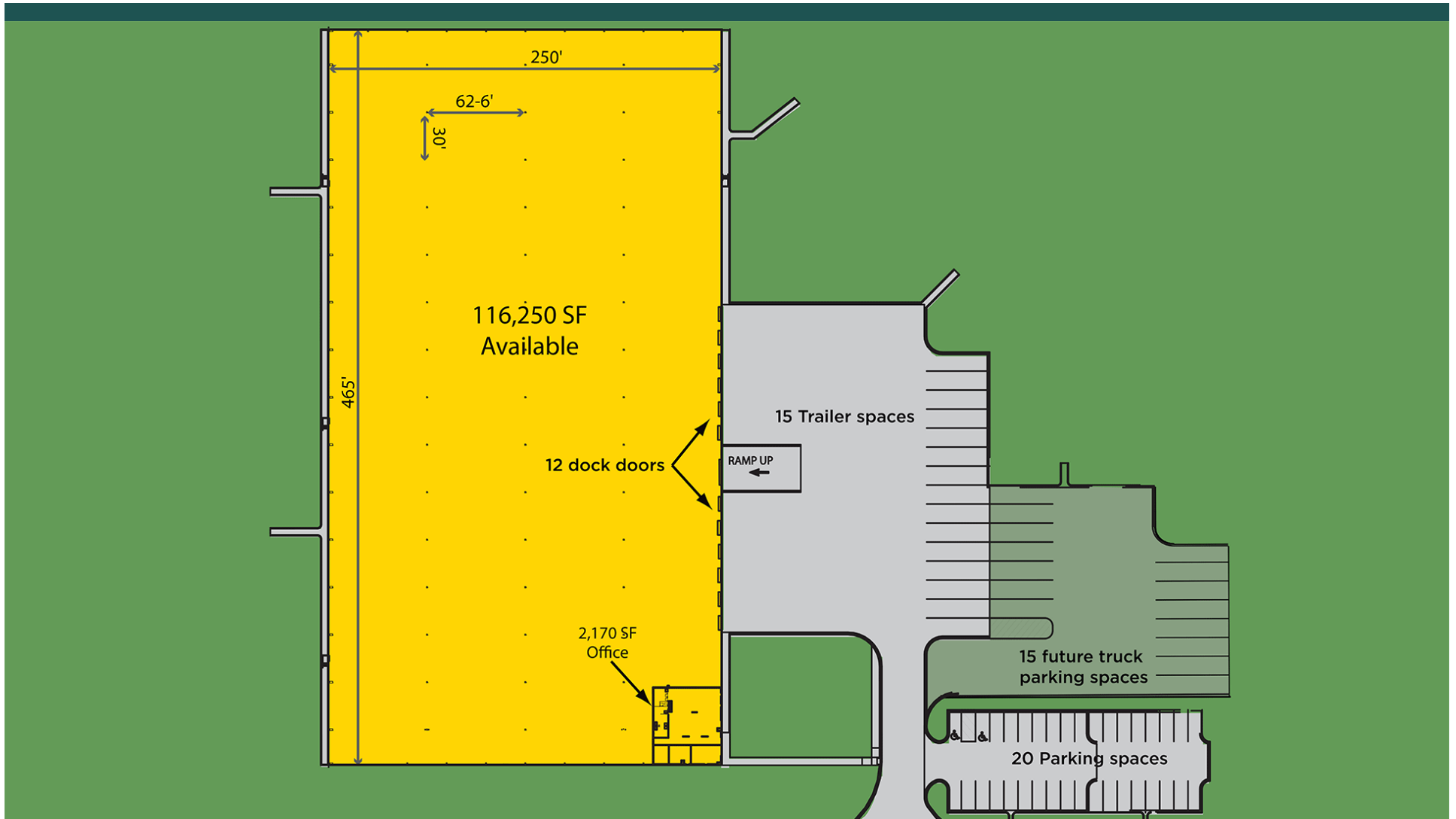


### LOCAL MARKET CONTACT

Brian Sutton | 770.638.2605 | [brian.sutton@dukerealty.com](mailto:brian.sutton@dukerealty.com)

# 405 EXPANSION BOULEVARD

405 Expansion Blvd., Port Wentworth, GA 31407

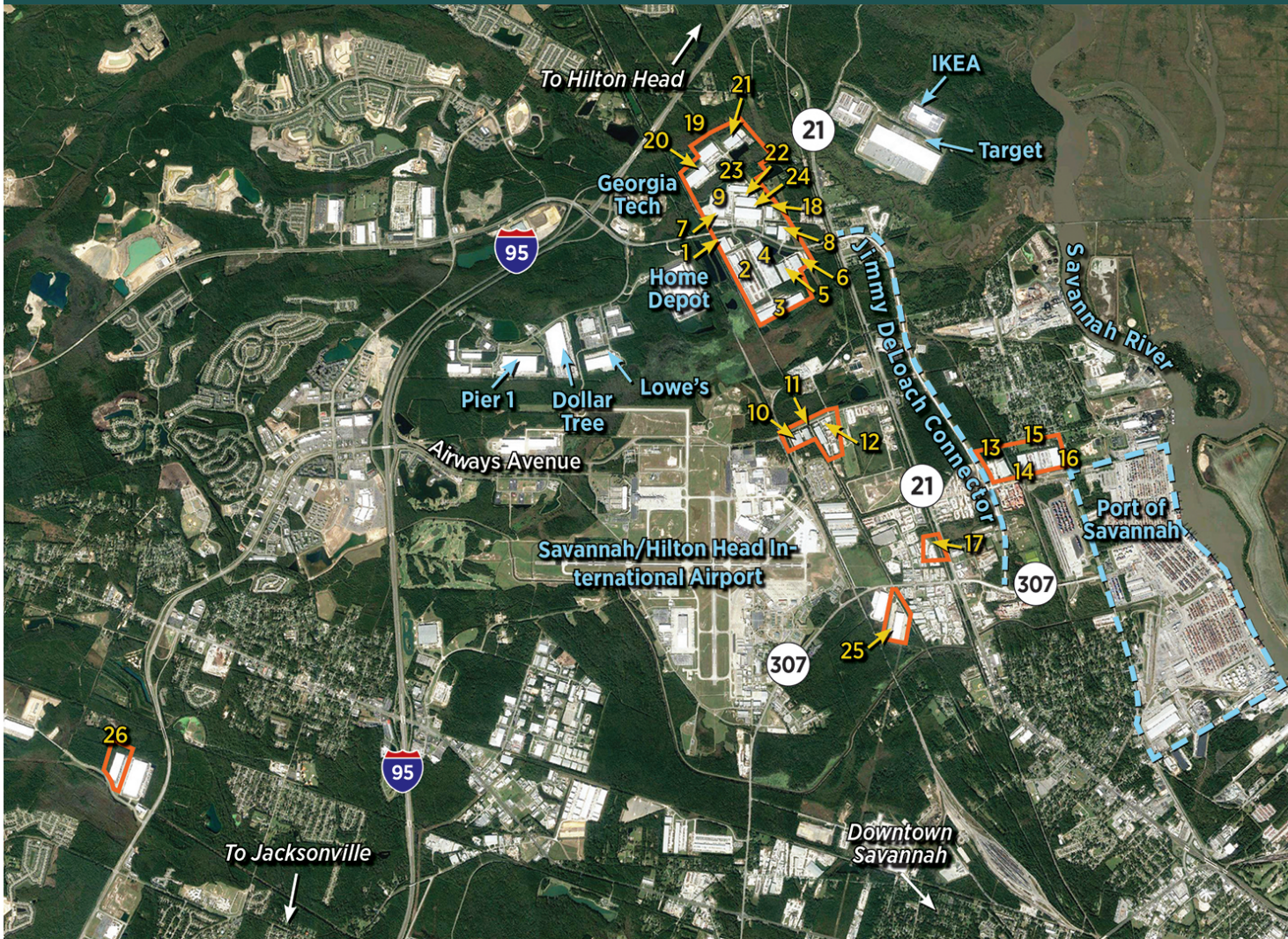


**LOCAL MARKET CONTACT**

Brian Sutton | 770.638.2605 | [brian.sutton@dukerealty.com](mailto:brian.sutton@dukerealty.com)

# CROSSROADS SAVANNAH

Jimmy Deloach Parkway, Savannah, GA 31407



## # BUILDING ADDRESS

1	151 Portside Court
2	163 Portside Court
3	175 Portside Court
4	150 Portside Court
5	239 Jimmy Deloach Parkway
6	235 Jimmy Deloach Parkway
7	276 Jimmy Deloach Parkway*
8	246 Jimmy Deloach Parkway
9	100 Logistics Way - Godley Road
10	198 Gulfstream Road
11	194 Gulfstream Road
12	190 Gulfstream Road
13	318 Grange Road
14	250 Grange Road
15	248 Grange Road
16	246 Grange Road
17	15 Aviation Court*
18	405 Expansion Boulevard
19	600 Expansion Boulevard
20	602 Expansion Boulevard
21	605 Expansion Boulevard
22	200 Logistics Way
23	500 Expansion Boulevard
24	400 Expansion Boulevard
25	2509 Dean Forest Road
26	Floor & Decor

\* Container Storage

### LOCAL MARKET CONTACT

Brian Sutton | 770.638.2605 | brian.sutton@dukerealty.com