

# RGLP RAIL SITE #4

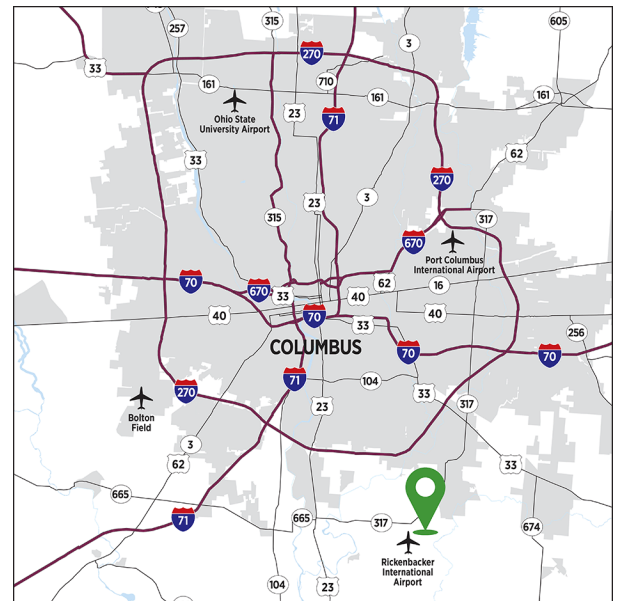
Rickenbacker Global Logistics Park, Rail Court North, Columbus, OH 43137



## PROPERTY HIGHLIGHTS

- Proposed 282,240-square-foot warehouse
- Pre-lease or build-to-suit opportunity
- 36' clear height
- 54' x 50' column spacing; 54' x 60' dock bays
- ESFR fire protection system
- LED lighting with motion sensors
- Located in Loaded-to-Capacity Zone
- Direct rail possible via Norfolk Southern
- 15-year, 100% real estate tax abatement
- Foreign-Trade Zone

## PROPERTY LOCATION



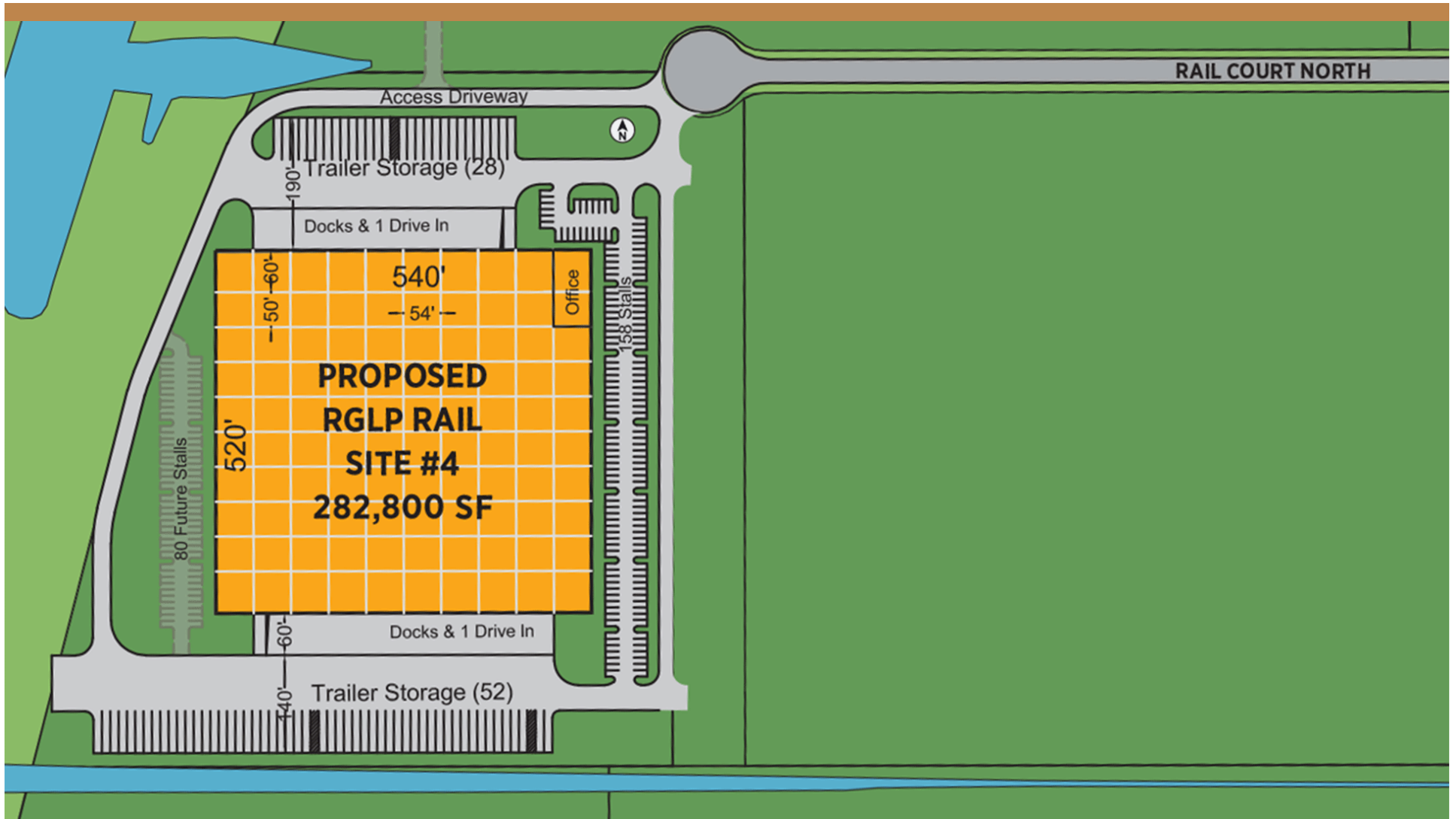
### LOCAL MARKET CONTACT

Ben Struewing | 614.932.6020 | ben.struewing@dukerealty.com



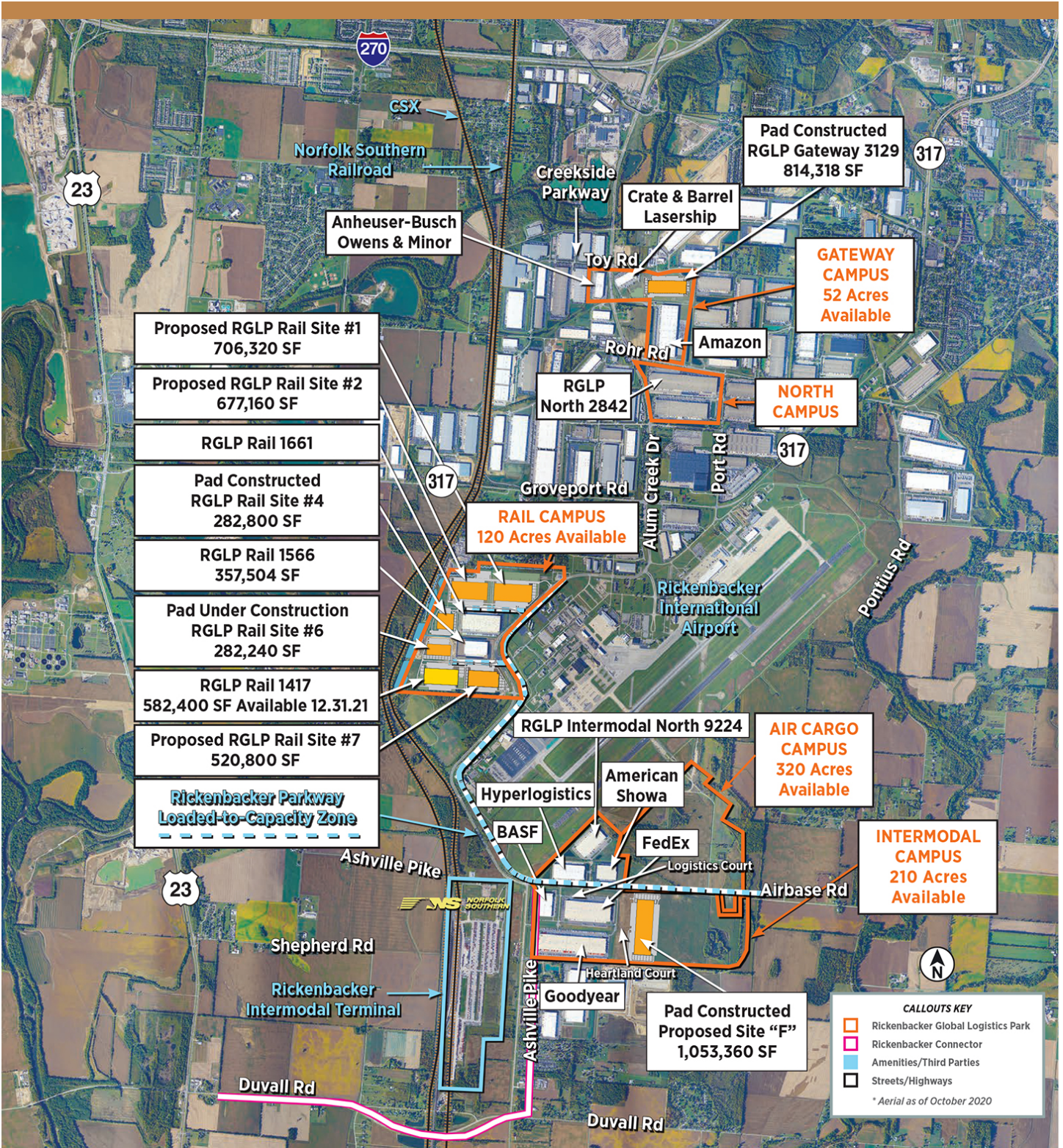
# RGLP RAIL SITE #4

Rickenbacker Global Logistics Park, Rail Court North, Columbus, OH 43137

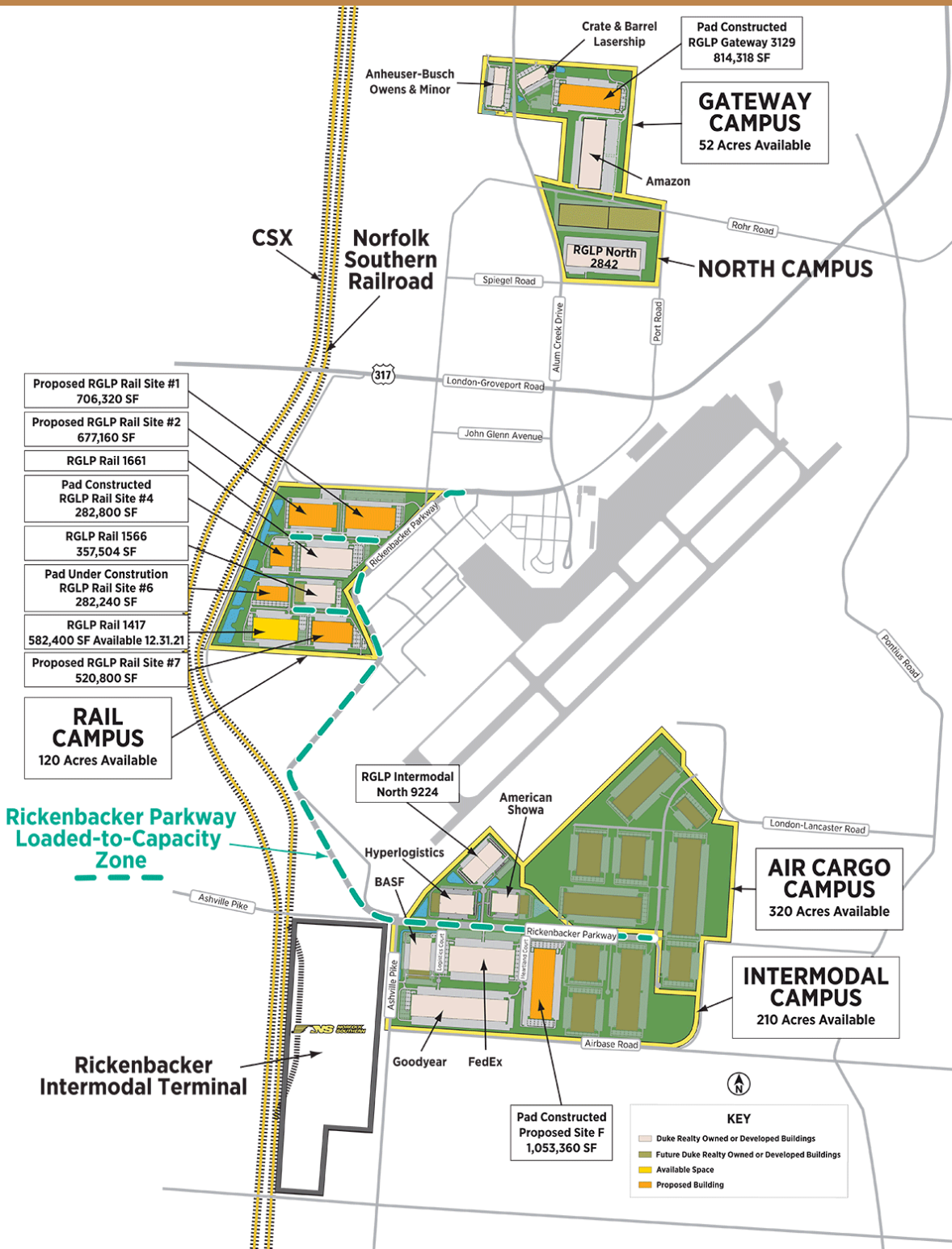


LOCAL MARKET CONTACT  
Ben Struewing | 614.932.6020 | ben.struewing@dukerealty.com





LOCAL MARKET CONTACT  
Ben Struewing | 614.932.6020 | ben.struewing@dukerealty.com



LOCAL MARKET CONTACT  
Ben Struewing | 614.932.6020 | ben.struewing@dukerealty.com