

AIRPORT LOGISTICS CENTER II

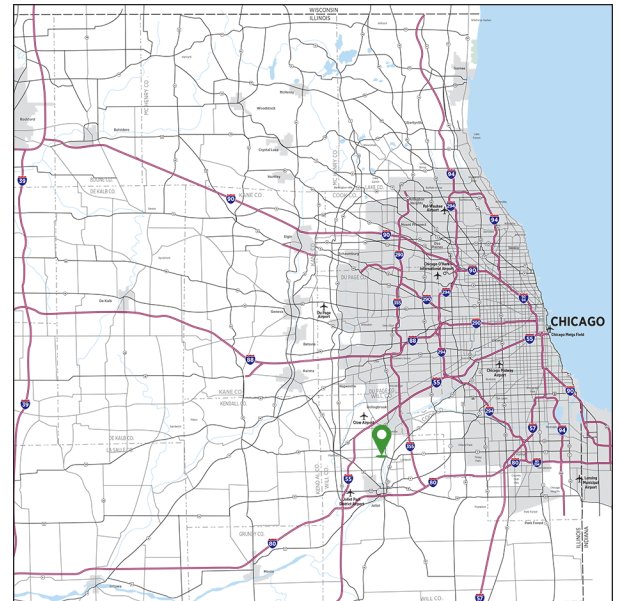
900 W. Renwick Road, Romeoville, IL 60446



PROPERTY HIGHLIGHTS

- 347,760-square-foot proposed building
- 22.96 acres
- 36' clear height
- 56' x 50' typical bays; 56' x 60' staging bay
- 90 dock docks
- 63 trailer parking stalls
- 169 car parking spaces
- ESFR sprinkler system
- Deliver to more than 50% of the country within one-day drive time
- Flexibility for build-to-suits
- Corporate jet access at Lewis University Airport

PROPERTY LOCATION



LOCAL MARKET CONTACTS

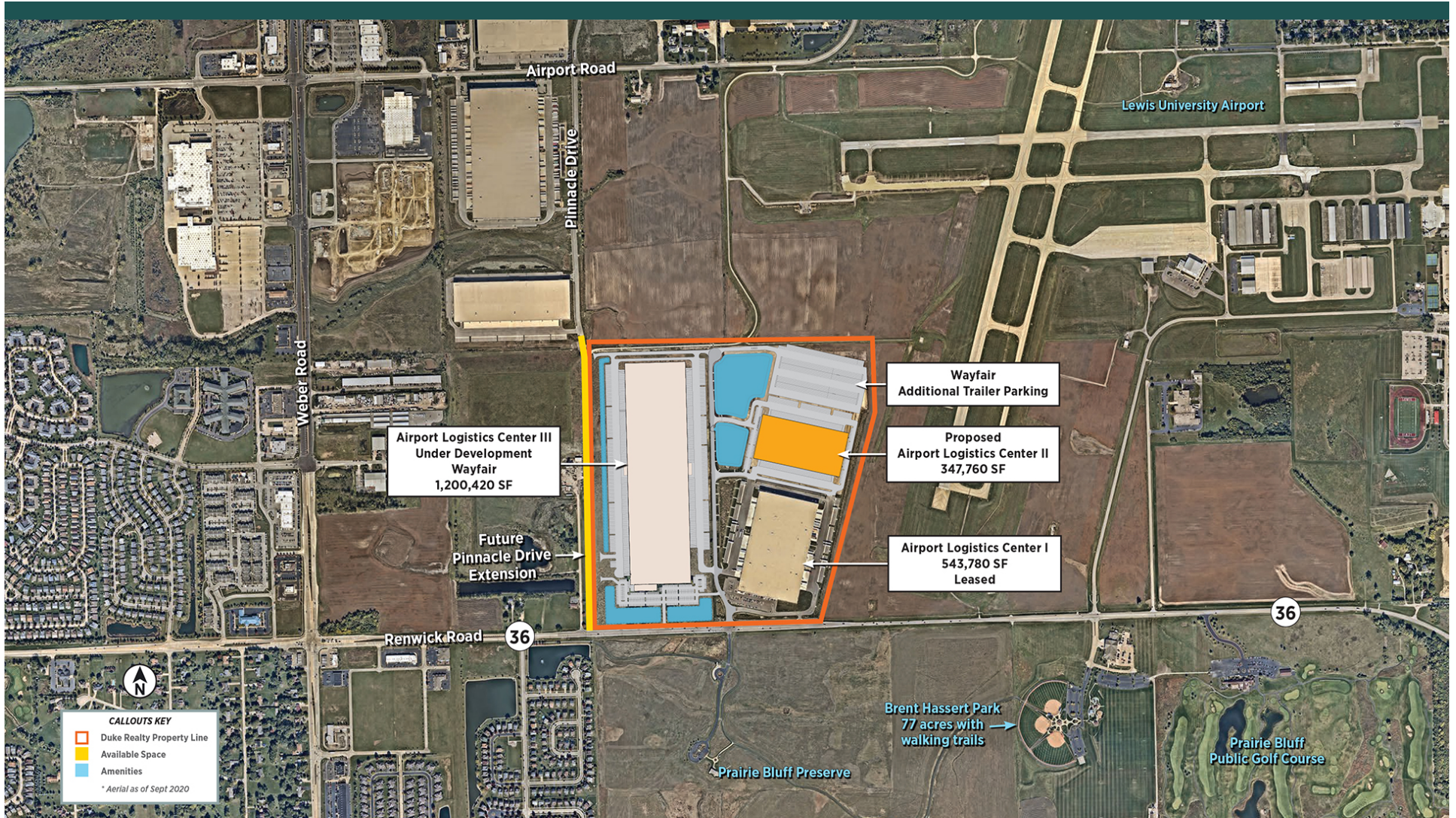
Susan Bergdoll | 847.232.5420 | susan.bergdoll@dukerealty.com

Jason West | 847.518.3210 | jason.west@cushwake.com

Sean Henrick | 847.518.3215 | sean.henrick@cushwake.com

AIRPORT LOGISTICS CENTER

W Renwick Road, Romeoville, IL 60446



LOCAL MARKET CONTACTS

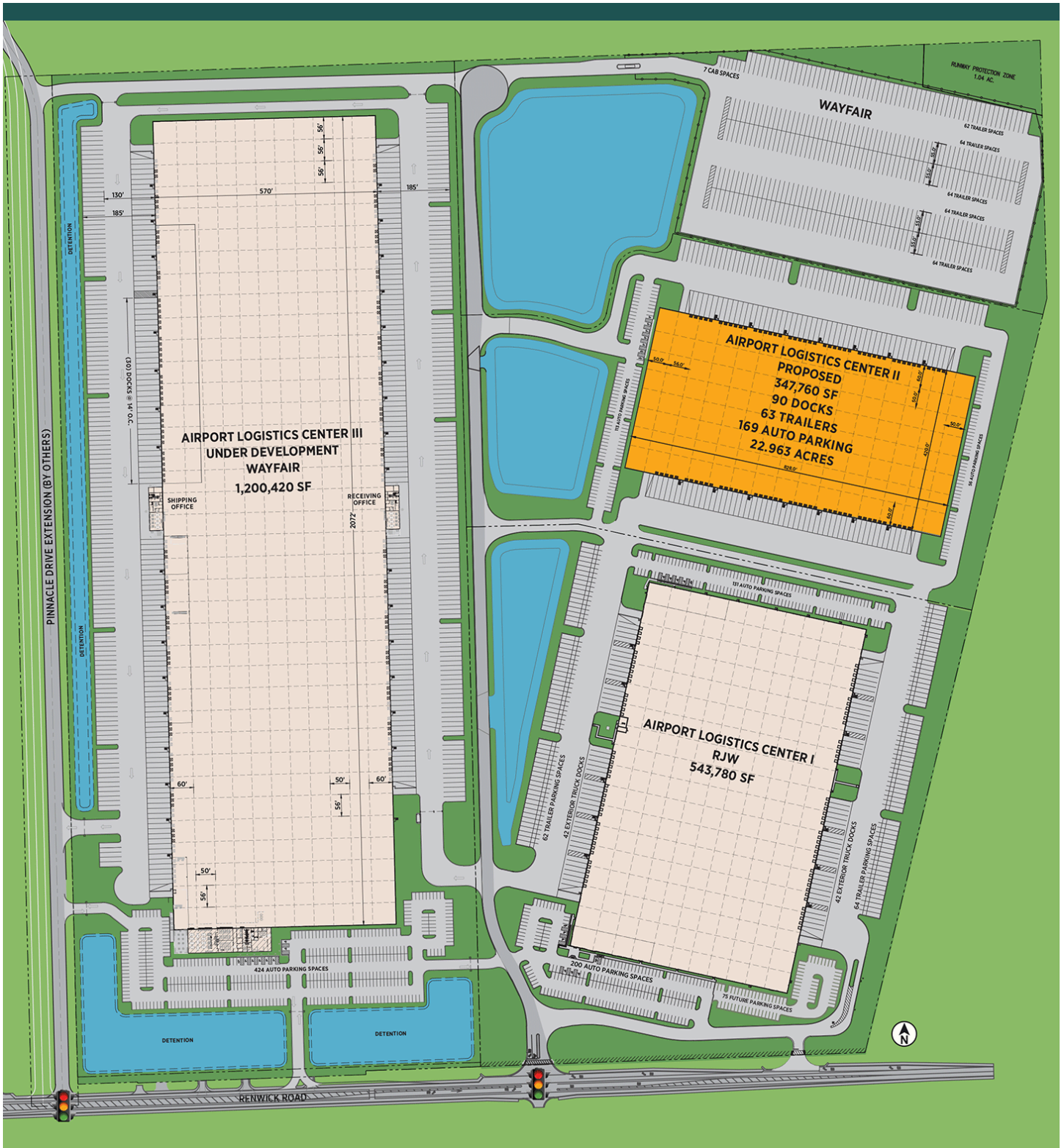
Susan Bergdoll | 847.232.5420 | susan.bergdoll@dukerealty.com

Jason West | 847.518.3210 | jason.west@cushwake.com

Sean Henrick | 847.518.3215 | sean.henrick@cushwake.com

AIRPORT LOGISTICS CENTER

W Renwick Road, Romeoville, IL 60446



LOCAL MARKET CONTACTS

Susan Bergdoll | 847.232.5420 | susan.bergdoll@dukerealty.com

Jason West | 847.518.3210 | jason.west@cushwake.com

Sean Henrick | 847.518.3215 | sean.henrick@cushwake.com