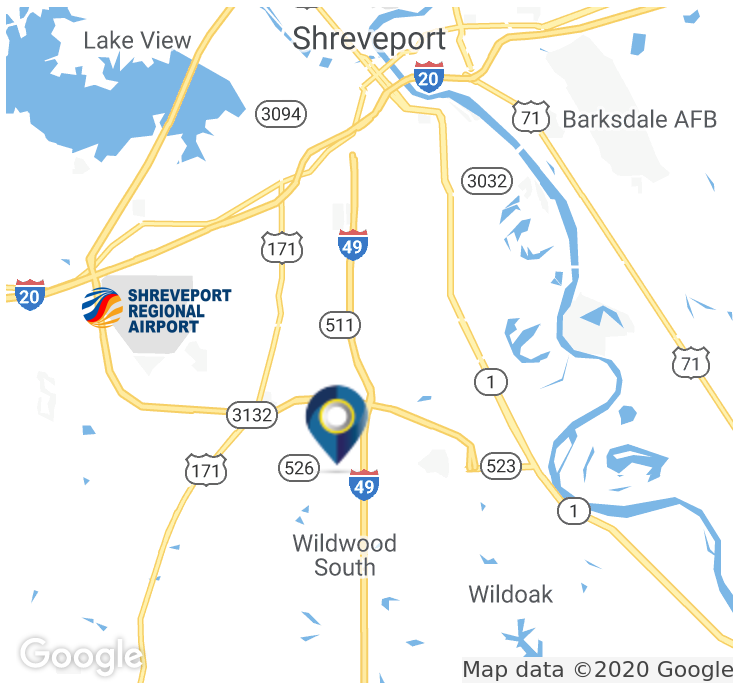
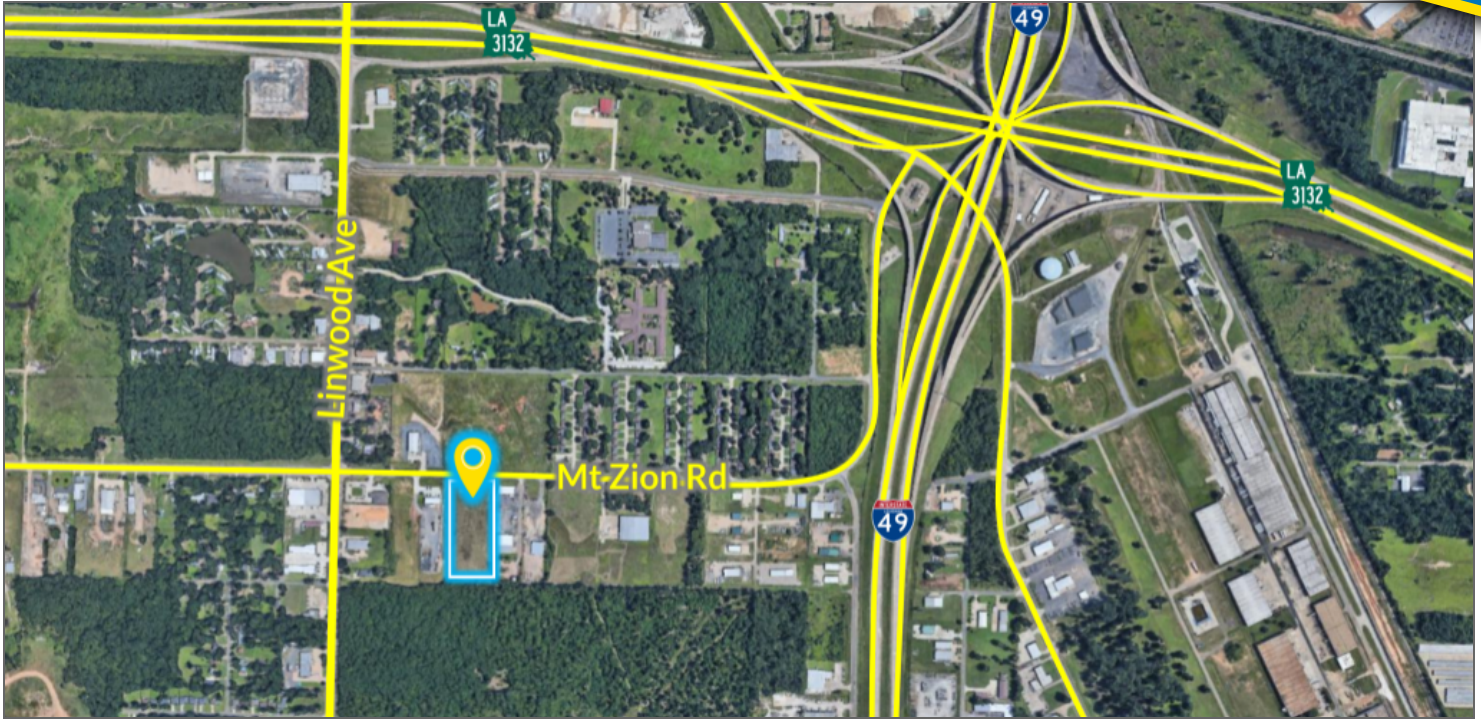




LAND FOR SALE

0 Mount Zion Road
Shreveport, LA 71106

5± ACRES OFF OF I-49



OFFERING SUMMARY

Sale Price:	\$325,000
Lot Size:	5.0 Acres
Zoning:	R-A
Market:	LA-Shreveport
Submarket:	Central
Price / SF:	\$1.49
Price/ AC:	\$65,000
Tax/APN:	161401007018500
Property Subtypes:	Industrial, Self Storage, Other

PROPERTY OVERVIEW

This rectangular parcel is zoned R-A and has 330' of frontage on Mount Zion Road with an approximate depth of 643 feet. The 5+/- acres is cleared and appears leveled. Ideal location for a light industrial building or development.



ROLAND RICOU
(T) 318.698.1109
(C) 318.773.3357
RolandR@Sealynet.com



MELISSA RIDDICK
(T) 318.698.1110
(C) 318.218.4987
MelissaR@Sealynet.com

SEALY REAL ESTATE SERVICES, LLC
333 TEXAS STREET, SUITE 1050
SHREVEPORT, LA 71101

318.222.8700
WWW.SEALYNET.COM



LAND FOR SALE

0 Mount Zion Road
Shreveport, LA 71106



LOCATION OVERVIEW

The subject property is located just east of Linwood Avenue and less than one minute west from I-49 at Highway 3132 (Inner Loop Expressway). Neighboring businesses are Construction Safety Products and Geaux Green Turf.

HIGHLIGHTS

- Cleared and Leveled - Ready for Development
- Less than One Minute from I-49
- Minutes from LA Hwy 3132 (InnerLoop Expy)
- Ideal Location for Light Industrial Development

[Click Here for Additional Information](#)

All information set forth in this brochure has been obtained from the owner, personal observation, or other reliable sources. Sealy Real Estate Services, LLC does not guarantee the accuracy of this information and makes no representations or warranties, expressed or implied, in this brochure. Information contained herein is subject to change without notice.



ROLAND RICOU

(T) 318.698.1109
(C) 318.773.3357
RolandR@Sealynet.com



MELISSA RIDDICK

(T) 318.698.1110
(C) 318.218.4987
MelissaR@Sealynet.com

SEALY REAL ESTATE SERVICES, LLC
333 TEXAS STREET, SUITE 1050
SHREVEPORT, LA 71101

318.222.8700

WWW.SEALYNET.COM