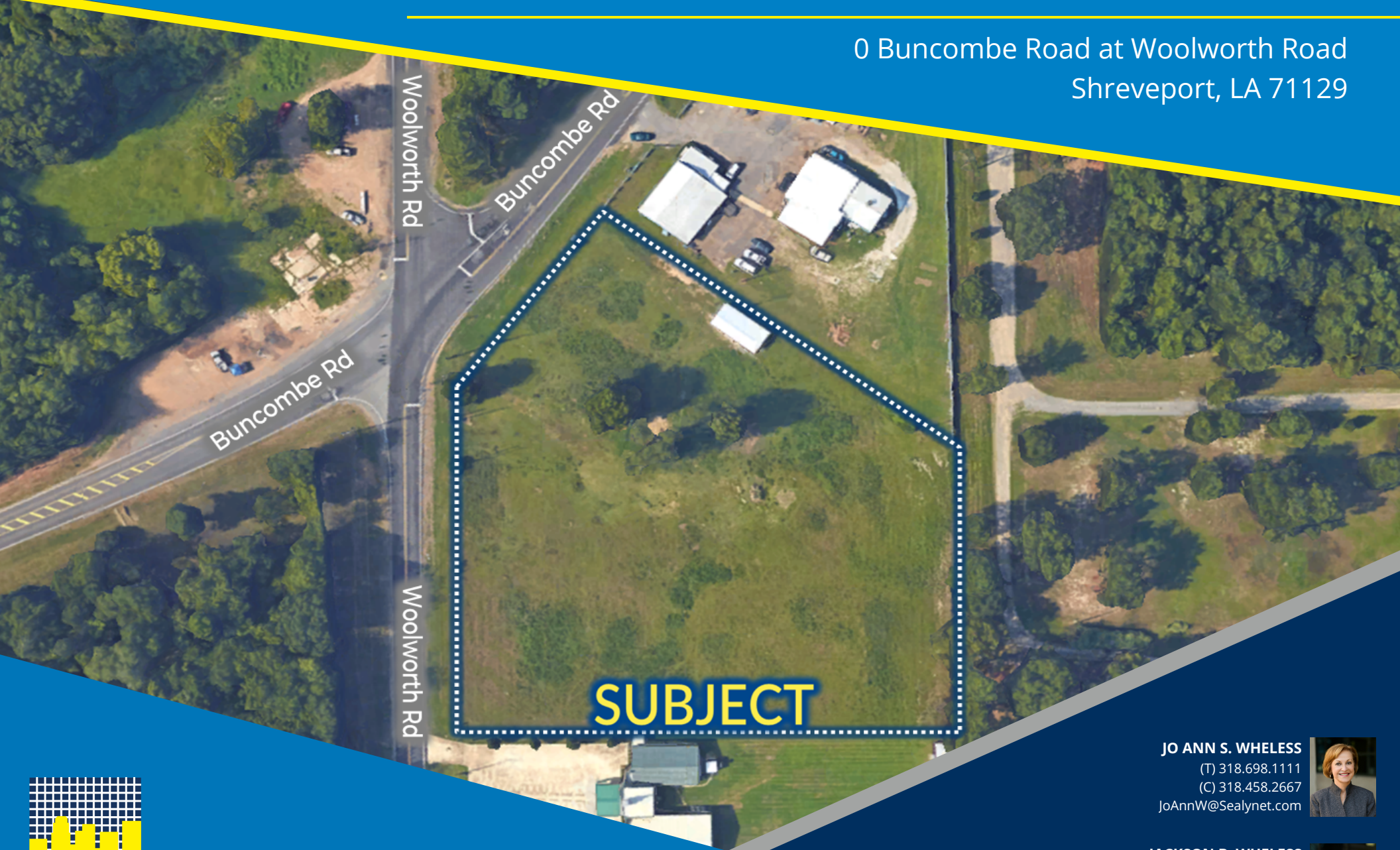


FOR SALE
LAND

0 BUNCOMBE RD AT WOOLWORTH RD, SE CORNER (3 ACRES)

0 Buncombe Road at Woolworth Road
Shreveport, LA 71129



JO ANN S. WHELESS

(T) 318.698.1111
(C) 318.458.2667

JoAnnW@Sealynet.com



JACKSON B. WHELESS

(T) 318.698.1113
(C) 318.344.7384

JacksonW@Sealynet.com



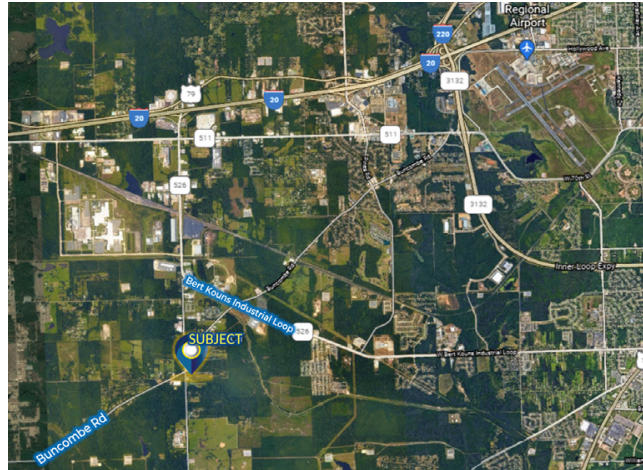
WWW.SEALYNET.COM

333 TEXAS STREET
SHREVEPORT, LA 71101
318.222.8700



0 BUNCOMBE RD AT WOOLWORTH RD, SE CORNER (3 ACRES)

0 Buncombe Road at Woolworth Road
Shreveport, LA 71129



PROPERTY OVERVIEW

3 acres at the intersection of Buncombe Rd and Woolworth Rd. Approximately 3/4 miles North of Walnut Hill Elementary/Middle School (approx 1,500 students). 3 miles south of I-20.

PROPERTY DETAILS

Gross Land Area:	3 Acres
Sale Price:	\$3 PSF
Total Price:	\$392,040
Land Splits Available:	Yes
Tax ID/APN:	161503003000100
Zoning:	C-3
Property Visibility:	Excellent
Airports:	Shreveport Regional Airport
Topography:	Level
Property Subtypes:	Office, Retail, Retail-Pad, Self Storage, Other

[Click Here for Additional Information](#)

All information set forth in this brochure has been obtained from the owner, personal observation, or other reliable sources. Sealy Real Estate Services, LLC does not guarantee the accuracy of this information and makes no representations or warranties, expressed or implied, in this brochure. Information contained herein is subject to change without notice.



JO ANN S. WHELESS
(T) 318.698.1111
(C) 318.458.2667
JoAnnW@Sealynet.com



JACKSON B. WHELESS
(T) 318.698.1113
(C) 318.344.7384
JacksonW@Sealynet.com

SEALY REAL ESTATE SERVICES, LLC
333 TEXAS STREET, SUITE 1050
SHREVEPORT, LA 71101

318.222.8700
WWW.SEALYNET.COM