



AVAILABLE

1909 GRANT AVENUE, PHILADELPHIA, PA

HIGHLIGHTS

- Two (2) Drive-Ins
- Ceiling Heights - 14'6"
- Taxes \$2,339.06 (Estimated 2020)
- Frontage (Approx.) - Grant Ave - 60'
- On-Site Parking
- Heat (warehouse portion)
- Air-conditioning (office portion)
- Mezzanine Area for Additional Storage
- Fire Alarm/Security System



BUILDING SIZE
2,500 SF



ACREAGE
0.14 Acres



ZONING
CA-1 (City of Philadelphia)

CONTACTS



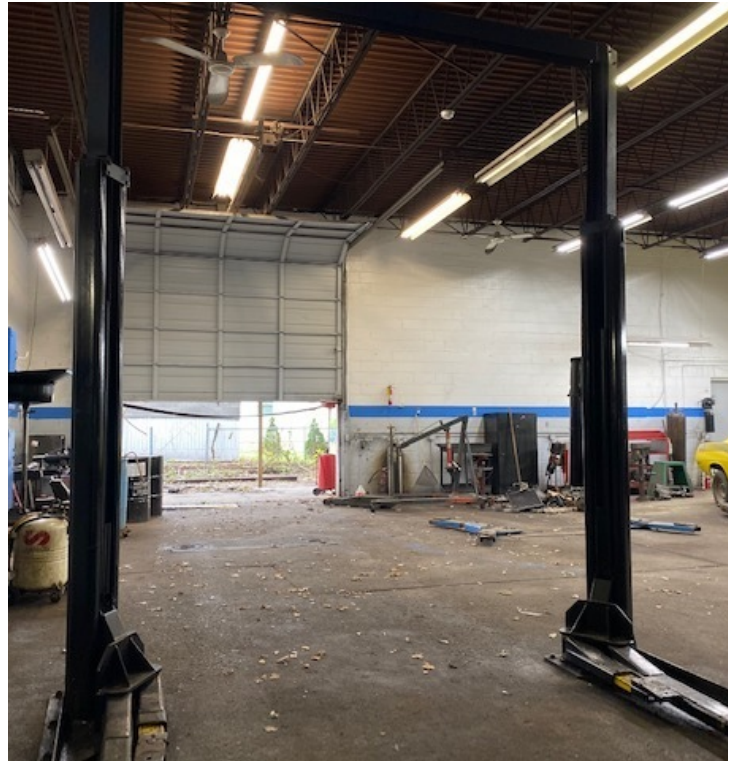
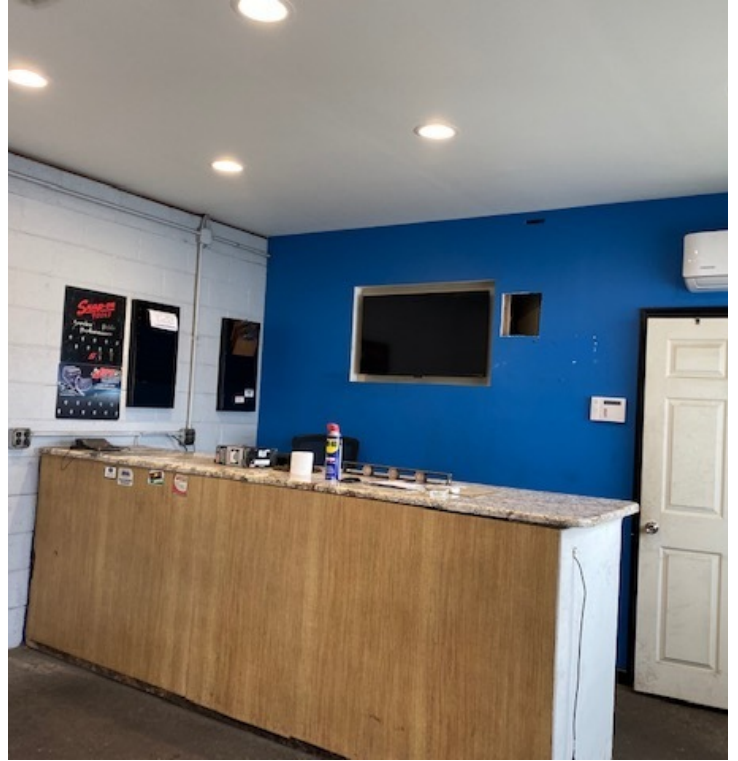
Jason Ostach
215.448.6021
jostach@binswanger.com



Christopher Pennington
215.448.6053
cpennington@binswanger.com

Two Logan Square
Philadelphia, PA 19103
Phone: 215.448.6000
binswanger.com

The information contained herein is from sources deemed reliable, but no warranty or representation is made as to the accuracy thereof and no liability may be imposed. RMA 07/19



CONTACTS



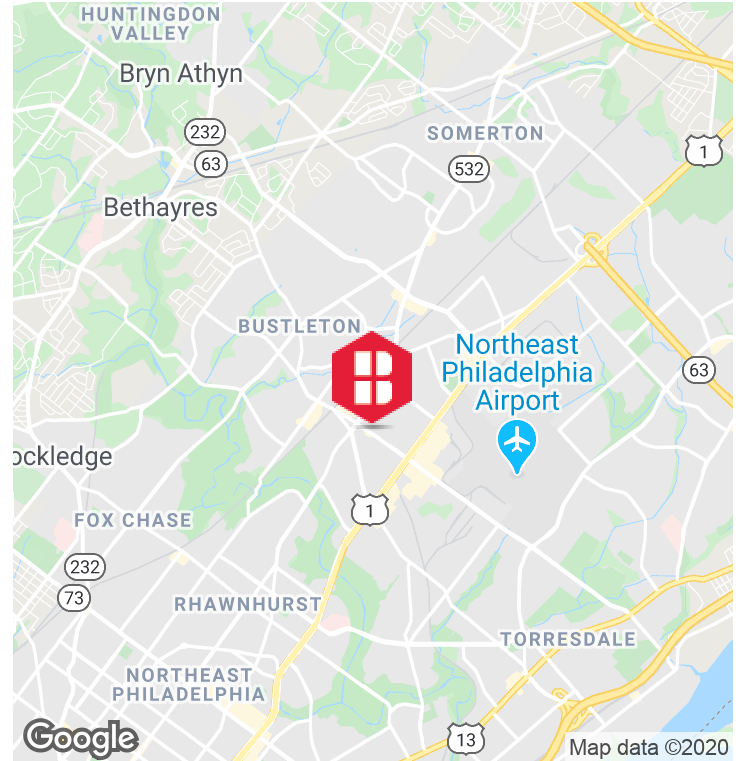
Jason Ostach
215.448.6021
jostach@binswanger.com



Christopher Pennington
215.448.6053
cpennington@binswanger.com

Two Logan Square
Philadelphia, PA 19103
Phone: 215.448.6000
binswanger.com

The information contained herein is from sources deemed reliable, but no warranty or representation is made as to the accuracy thereof and no liability may be imposed. RMA 07/19


DEMOGRAPHICS

	1 MILE	2 MILES	3 MILES
Total Households	10,571	32,686	69,104
Total Population	24,506	83,258	179,498
Average HH Income	\$52,605	\$58,190	\$61,717

LOCATION DESCRIPTION

The property is located directly on highly traveled Grant Avenue in the heart of the Bustleton section of Northeast Philadelphia. The property also offers nearby access to Roosevelt Blvd, Bustleton Avenue, I-95 and Center City Philadelphia.

CONTACTS


Jason Ostach
215.448.6021
jostach@binswanger.com



Christopher Pennington
215.448.6053
cpennington@binswanger.com

Two Logan Square
Philadelphia, PA 19103
Phone: 215.448.6000
binswanger.com

The information contained herein is from sources deemed reliable, but no warranty or representation is made as to the accuracy thereof and no liability may be imposed. RMA 07/19