



AVAILABLE

323 WEST HIGH STREET, POTTSTOWN, PA

HIGHLIGHTS

- 16' ceiling height
- 170' Frontage
- Zoned GW - Gateway West - (Pottstown)
- Fourteen 12' drive in doors
- 1- ton crane service
- Waste Oil Radiant Heating
- Concrete construction
- Taxes - \$18,492 (2019)

OPPORTUNITY ZONE

- Entitles investments made to this property to be preferential tax treatment.
- Tax benefits vary based off investment length: fewer than 5 years, 5-7 years, 7-10 years and greater than 10 years

PROPERTY/LOCATION DESCRIPTION

Approximately 7,350 SF consisting of 6,850 SF of warehouse and 500 SF office space on 0.66 acres. The property is located in Pottstown, PA, right off PA-100, offering immediate access to US Route 422. The property lies approximately 40 miles north west of Center City, Philadelphia, via US Route 422 and I-76.

PERMITTED USES

Automotive repair station; Bank and financial institution; Car wash; Commercial greenhouses; Convenience store with gasoline dispensing center; Direct retail store; Direct service store; Drive-through windows as an accessory use; Health and fitness center; Health service providers; Hospital; Hotel/motel; Municipal parks, playgrounds, and other such municipal buildings; Neighborhood automobile service station; Neighborhood convenience store; Public park or nonprofit recreation use; Office, except client-based social service; Open-air markets; Restaurant; Social club; Trade school; Utility company operational facility; Veterinary office and kennel.

CONTACTS



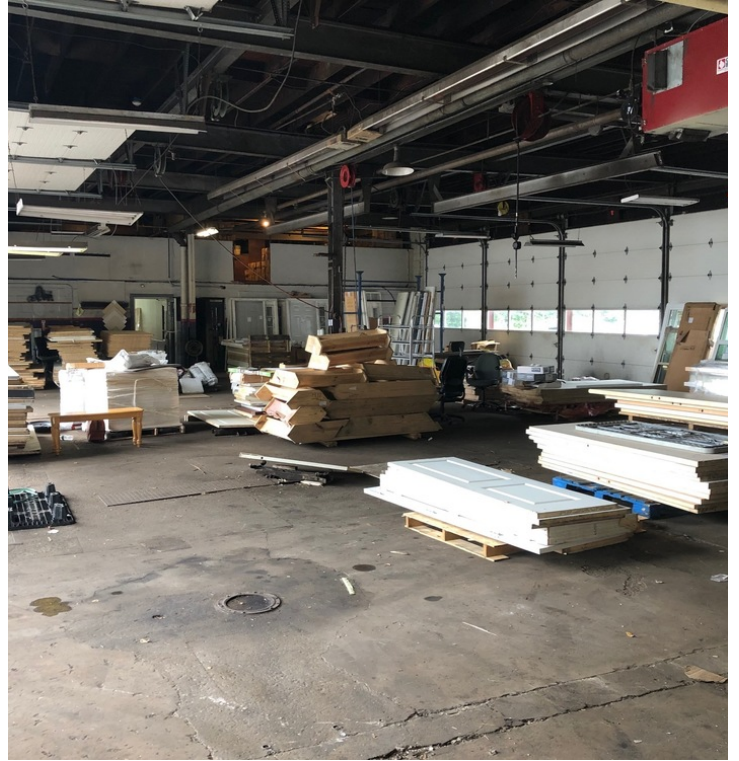
Timothy Pennington
215.448.6266
tpennington@binswanger.com



Christopher Pennington
215.448.6053
cpennington@binswanger.com

Two Logan Square
Philadelphia, PA 19103
Phone: 215.448.6000
binswanger.com

The information contained herein is from sources deemed reliable, but no warranty or representation is made as to the accuracy thereof and no liability may be imposed. RMA 07/19



CONTACTS



Timothy Pennington
215.448.6266
tpennington@binswanger.com



Christopher Pennington
215.448.6053
cpennington@binswanger.com

Two Logan Square
Philadelphia, PA 19103
Phone: 215.448.6000
binswanger.com

The information contained herein is from sources deemed reliable, but no warranty or representation is made as to the accuracy thereof and no liability may be imposed. RMA 07/19