

**FOR
LEASE**

Saint Mary's Building

830 W St Germain Street
St Cloud, MN



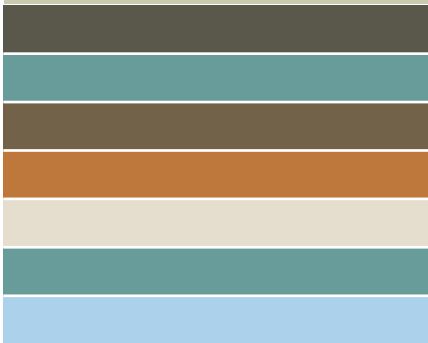
Office and Retail Space Availabilities in the Historic Saint Mary's Building Downtown Saint Cloud

6,000 SF +/- of Office space on 2nd and 3rd Floor

1,400 SF +/- Retail spaces available on Ground Level

Handicap accessible building complete with elevator

Lease rates starting at \$6-8 PSF Office and \$10 - \$12 PSF Retail



WARNERT COMMERCIAL

REAL ESTATE

14 7TH AVENUE NORTH

ST CLOUD, MN 56303

www.warnertcommercial.com

Contact:

Sheila DeVine, Broker

320 492 3230

sdevine@warnertcommercial.com

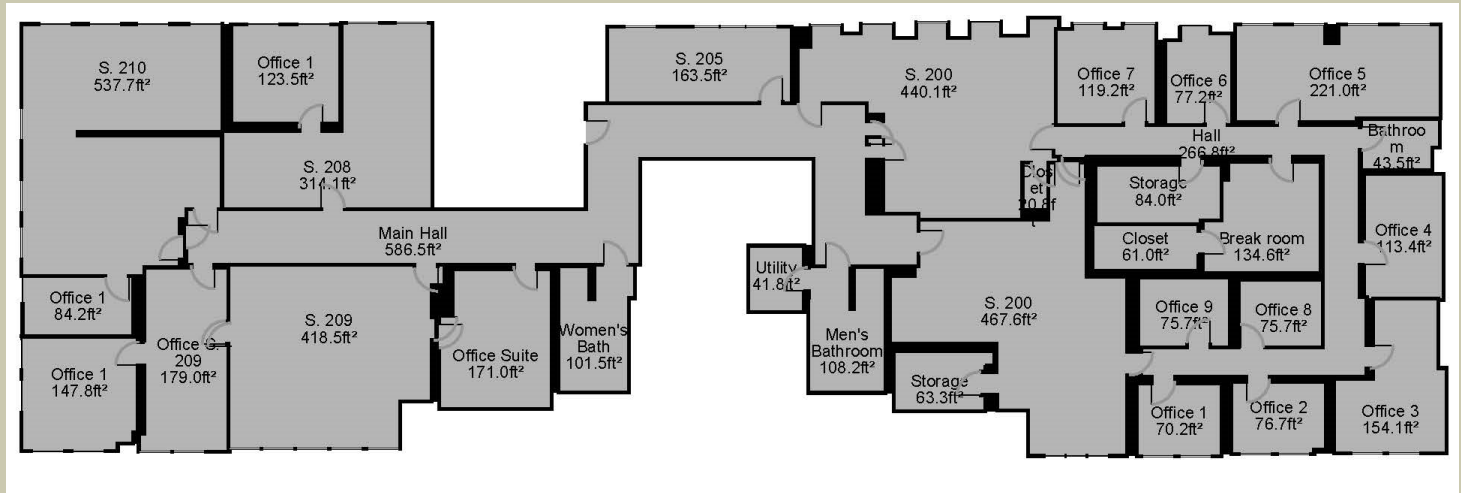
Justin Studer, Associate

320 309 9178

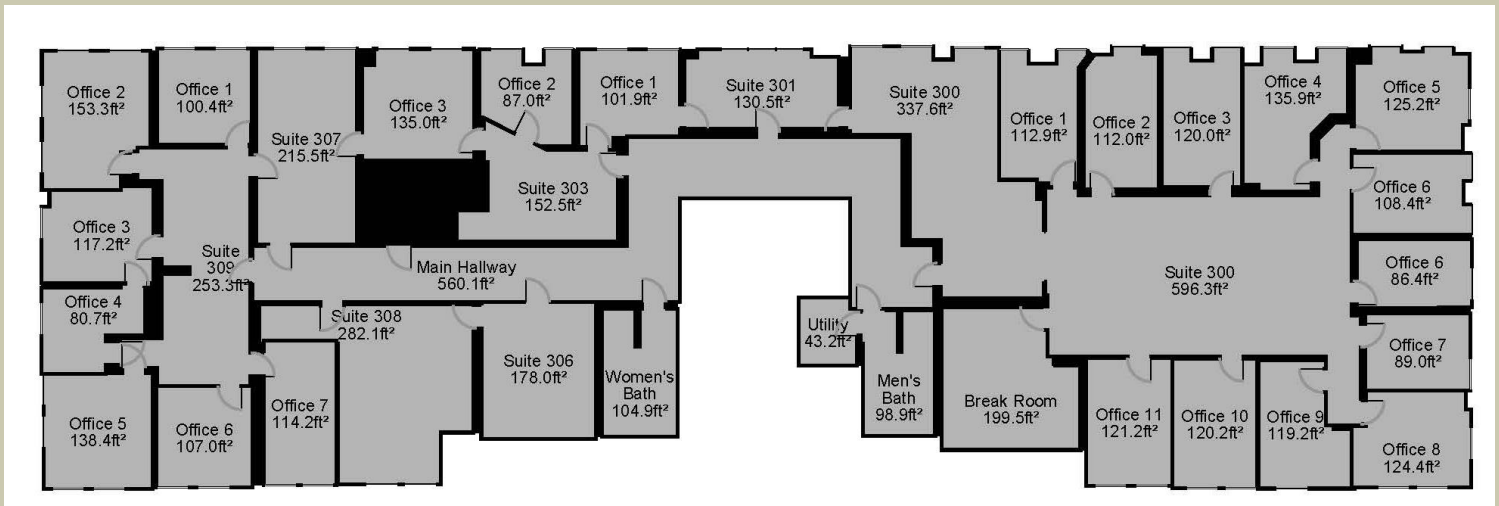
jstuder@warnert.com

2nd and 3rd Floor Plans

2nd Floor



3rd Floor



Contact:

Sheila DeVine, Broker

320 492 3230

sdevine@warnertcommercial.com

Justin Studer, Associate

320 309 9178

jstuder@warnert.com

WARNERT COMMERCIAL
REAL ESTATE

14 7TH AVENUE NORTH

ST CLOUD, MN 56303

www.warnertcommercial.com