

FOR LEASE

OFFICE SPACE



OFFICE SPACE FOR LEASE

221 N. MAIN ST., GOSHEN, IN 46526

PROPERTY HIGHLIGHTS

- Centrally located in Downtown Goshen at the intersection of 3rd and Pike Street
- Suites available from 889–6,462 SF on the second and third floor of the KeyBank Building
- Approximately 40 on-site share parking spaces
- Goshen Fiber Network available

OFFERING SUMMARY

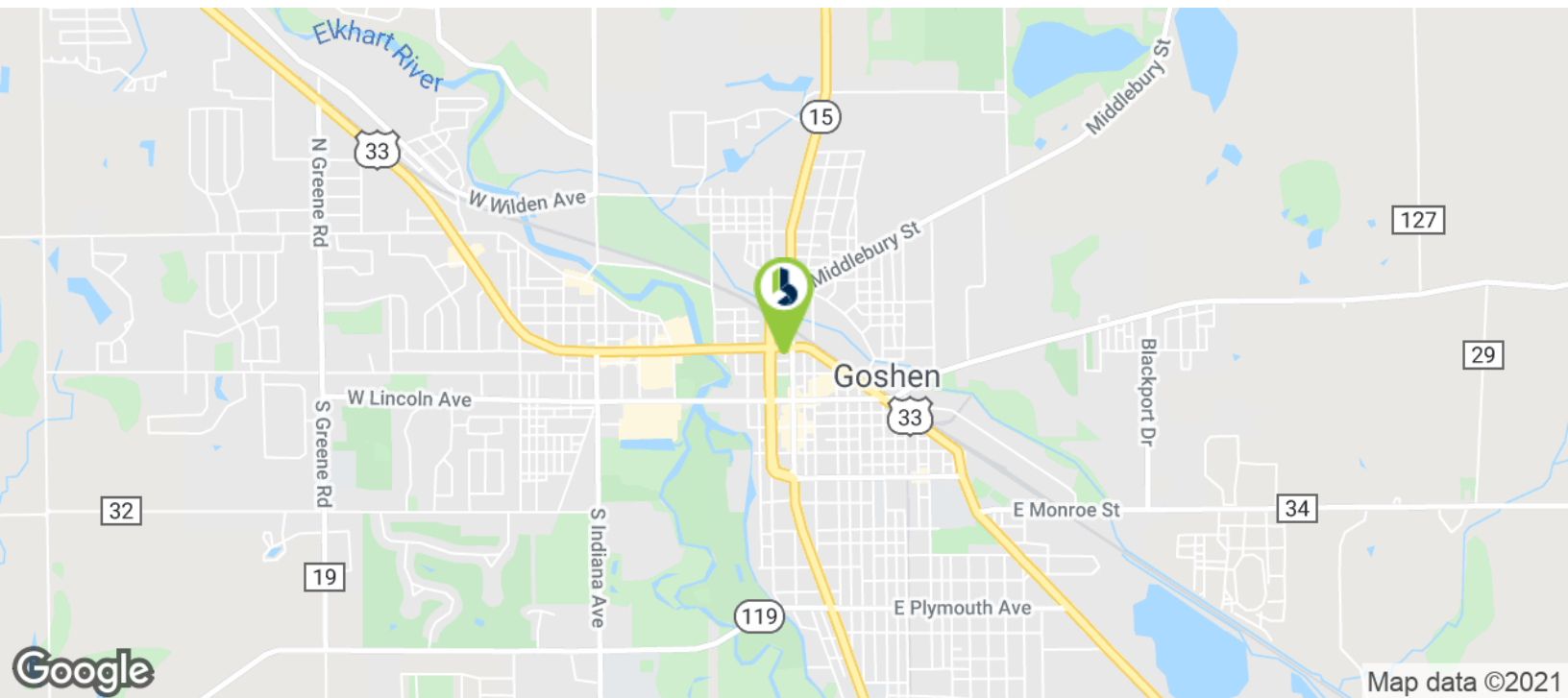
Lease Rate:	\$12.25 SF/yr (Gross)
Space Available:	889 - 6,462 SF
Lot Size:	0.77 Acres
Year Built:	1984
Building Size:	18,720 SF
Market:	Elkhart County
Submarket:	Goshen

AVAILABLE SPACES

SPACE	LEASE RATE	SIZE (SF)
210	\$12.25 SF/yr	1,079 SF
240	\$12.25 SF/yr	889 SF
3rd Floor	\$12.25 SF/yr	4,494 SF

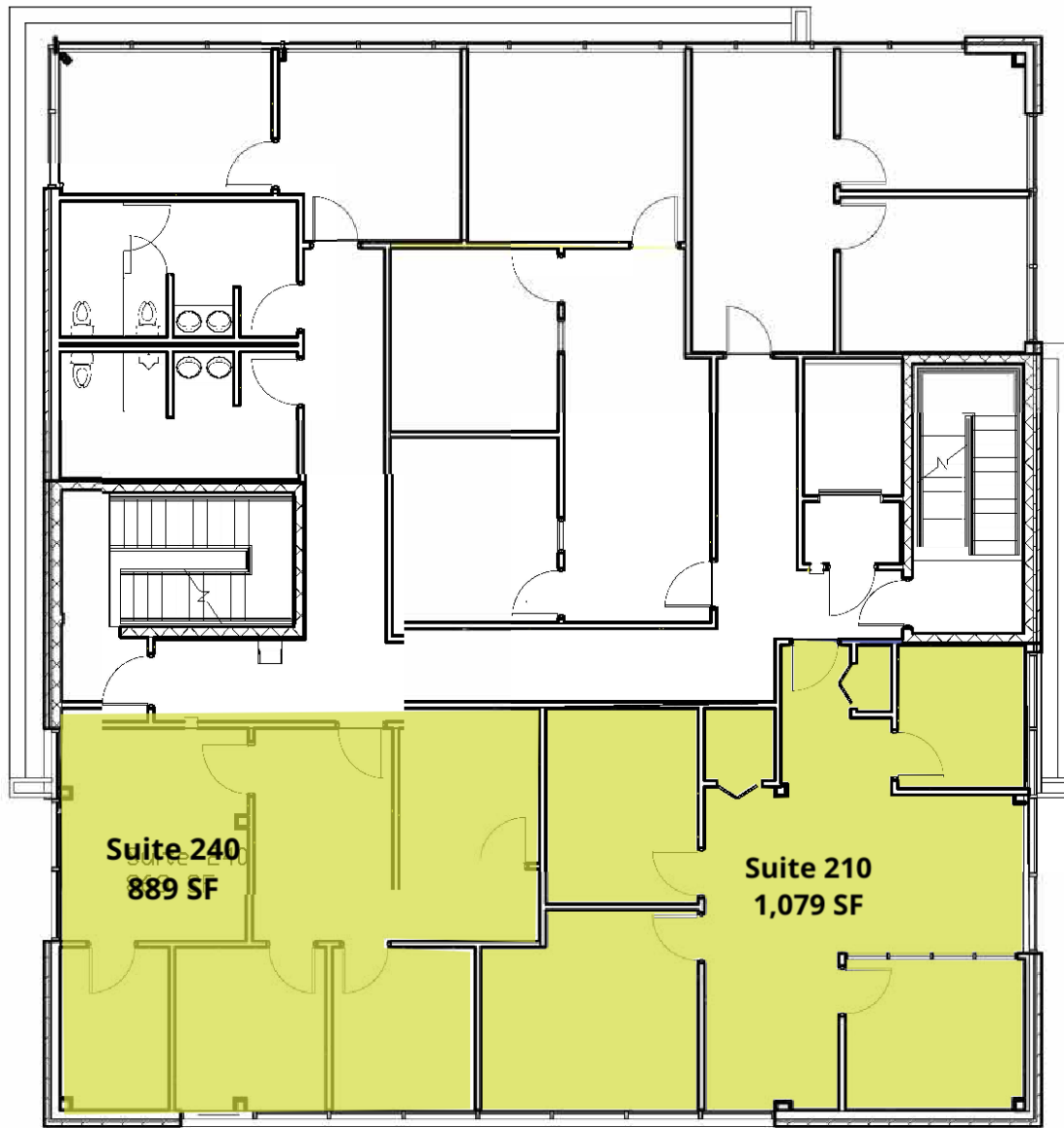
LOCATION DETAILS

221 N. MAIN ST., GOSHEN, IN 46526 | FOR LEASE



FLOOR PLAN

221 N. MAIN ST., GOSHEN, IN 46526 | FOR LEASE



AVAILABLE



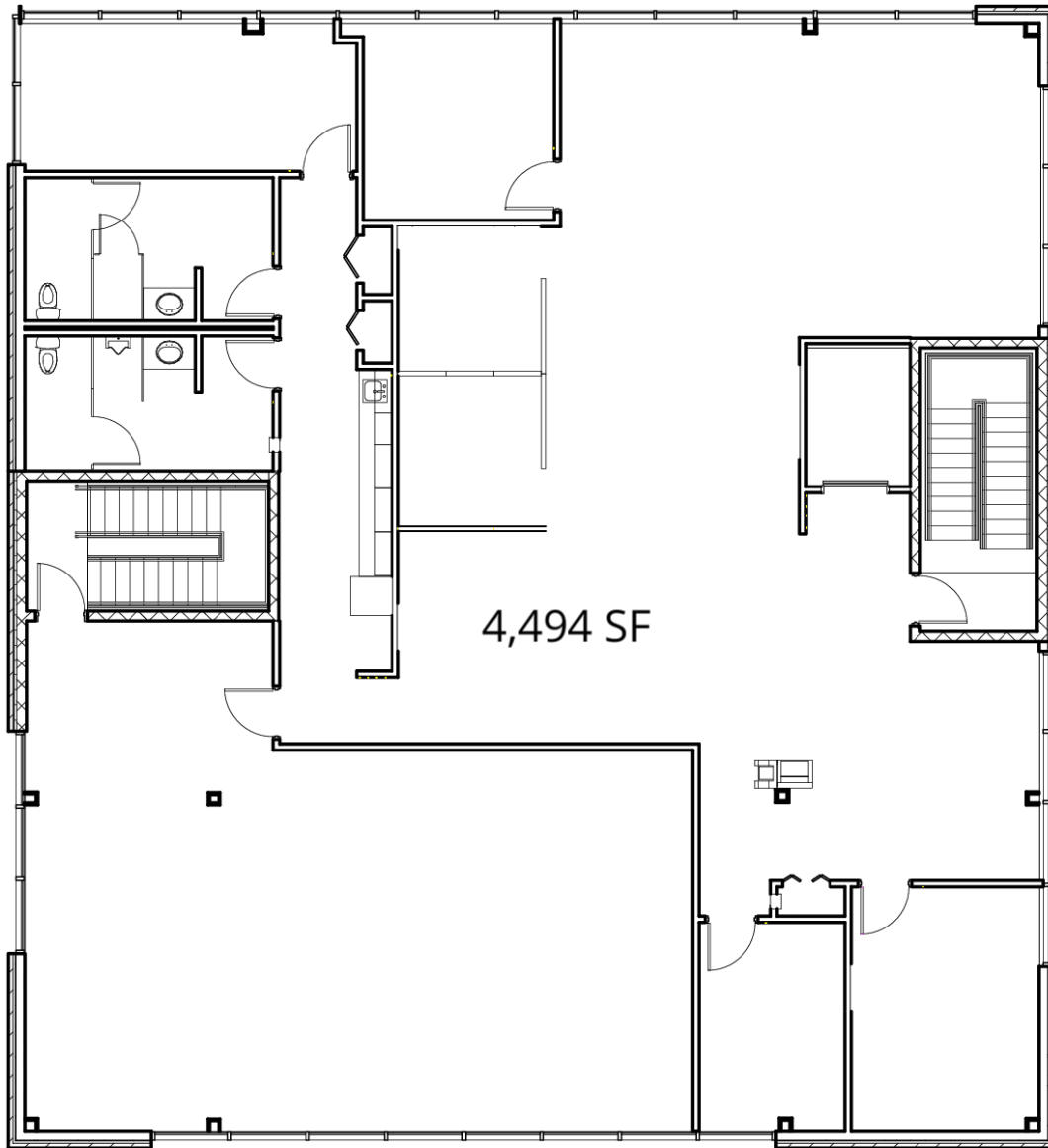
MATT WETZEL
Senior Broker
574.970.9006
mwetzel@bradleyco.com

ANDY KNAPICK
Broker
574.383.8896
ajknapick@bradleyco.com

©2021 Bradley Company, LLC and affiliates. Use of any third party name or mark is for informational purposes only and does not indicate sponsorship or endorsement by such party. Not all information has been independently verified, and the presenting broker makes no guarantee about its accuracy. Any projections, opinions, or estimates are for example only. Before completing a real estate transaction, you and your advisors should conduct an independent investigation of the property to determine its suitability for your needs.

FLOOR PLAN

221 N. MAIN ST., GOSHEN, IN 46526 | FOR LEASE



MATT WETZEL
Senior Broker
574.970.9006
mwetzel@bradleyco.com

ANDY KNAPICK
Broker
574.383.8896
ajknapick@bradleyco.com