

# RESTAURANTS UNDER THE DOME

SAN FRANCISCO | CALIFORNIA

Fully built-out  
kitchen space  
available for  
Long-term,  
Short-term &  
Pop-up  
opportunities.

*Westfield*

SAN FRANCISCO CENTRE



maven  
RETAIL

# PROJECT OVERVIEW

## THE OPPORTUNITY

The Restaurants under the Dome are a collection of Restaurant spaces that feature wok ranges, a wood-burning pizza oven, rotisseries, bars, private dining rooms, special event space, exhibition kitchens, and expansive courtyard seating. Turn-key quality second-generation restaurants that are ideal for local and national chefs to bring to life concepts and aesthetics without the burden of expensive buildouts.

Long-term, short-term, and pop-up leasing opportunities are available from 3,200 to 9,000 sq. ft.

## THE DOME

Crowning the restaurants on the fourth floor is the 102-foot-wide skylit dome, built in 1908. During World War II the dome was blacked out and forgotten for decades. In 2006 the dome was restored and raised another 60' and given a place of honor in San Francisco's 1.5 million-square-foot complex.

13.1 MILLION  
ANNUAL TRAFFIC

128  
RETAILERS AND RESTAURANTS

\$472 MILLION  
IN ANNUAL SALES

\$58 MILLION  
IN SALES FOR DINING ALONE

216,792 SF  
SPECIALTY GLA

1.1 MILLION SF  
OF RETAIL SPACE

AMENITIES/SERVICES



ANSWERS ON THE SPOT



GIFT CARDS



FREE WI-FI



ATM'S



CURRENCY EXCHANGE



SECURITY

# MARKET OVERVIEW



## DEMOGRAPHICS

- 2nd most expensive housing market in the country
- 1.9 + Million population
- \$149,589 average HH income

## CONVENTION CENTER

- 900,000 sq. ft. of convention space at Moscone
- 1.3 Million visitors annually
- 70+ events annually, Hosts Dreamforce, Oracle OpenWorld, and Game Developers Conference

## TOURISM

- 25+ Million visitors annually
- 60% (20,000 rooms) of SF's hotels rooms are within a 5-minute walk
- 1/3 of all visitors are tourists and they account for 40% of retail sales

## RESIDENTIAL/OFFICE

- 506,816 total daytime employees (3 miles)
- 44,813 total business establishments (3 miles)
- 12,000 new residential units between Mid-Market and Van Ness

# CO-TENANCY

Cocosueño

J.CREW

bloomingdales

BANANA REPUBLIC

CLUB MONACO

SEPHORA

ALDO

ARITZIA

Madewell



TIFFANY & Co.

Burke Williams  
*beyond the spa*

NORDSTROM

ZARA



BESPOKE  
TAILORED FOR TECH



AG

CENTURY  
THEATRES

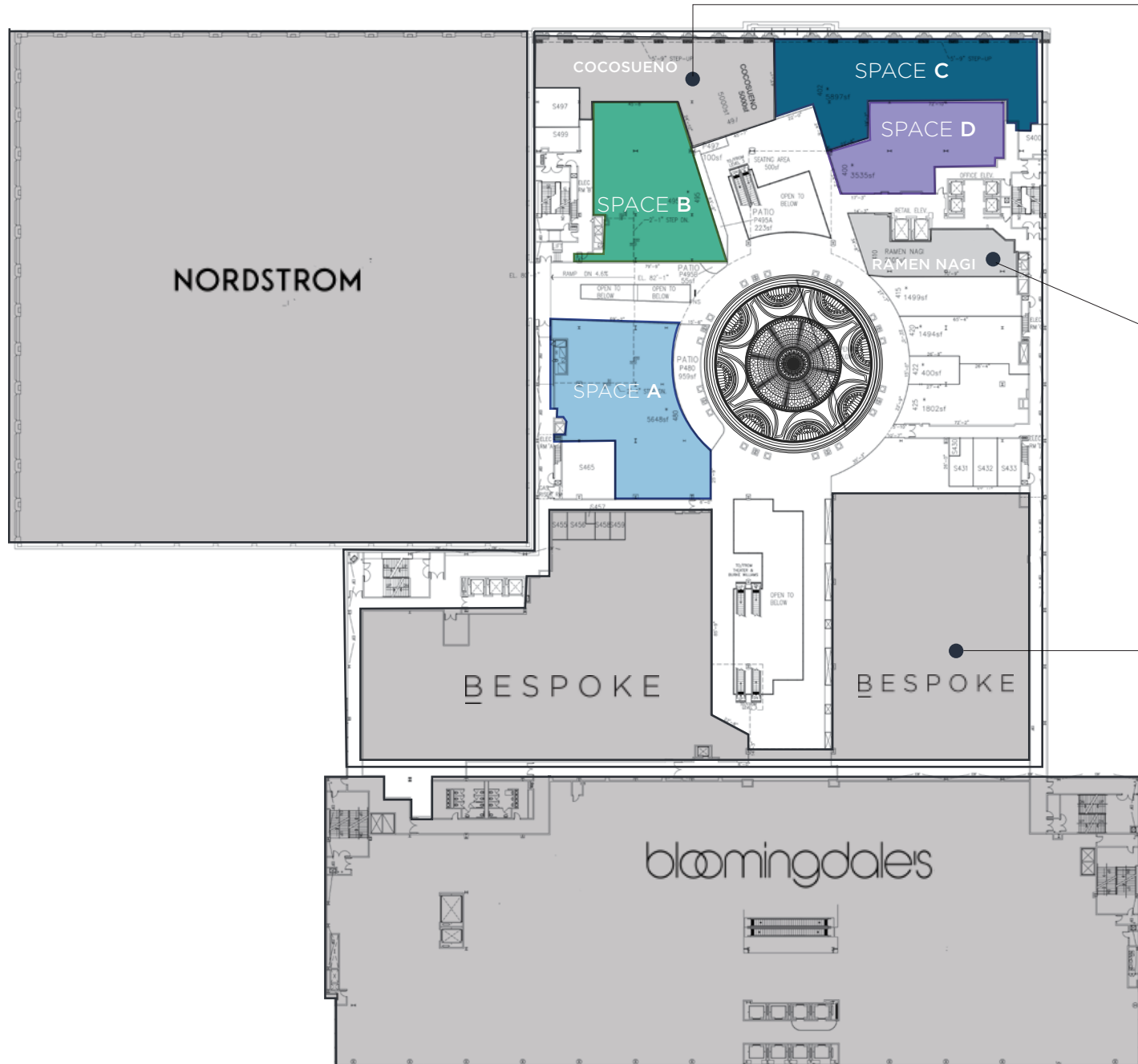


BOSS  
HUGO BOSS

H&M



# SITE PLAN



## COCOSUENO

Cocosueno's food is inspired by a tropical dream of the Jalisco coastline and the complex cuisines from the very diverse regions of Mexico. The creators of San Francisco's Tropisueno Mexican Kitchen deliver creative cuisine in a relaxed rustic cantina.

## RAMEN NAGI

Japan's Ramen Master Chef Satoshi Ikuta is opening his third US Ramen Nagi Under The Dome. Known for lines out the door, the restaurants are described as "where ramen creativity lives and breathes."

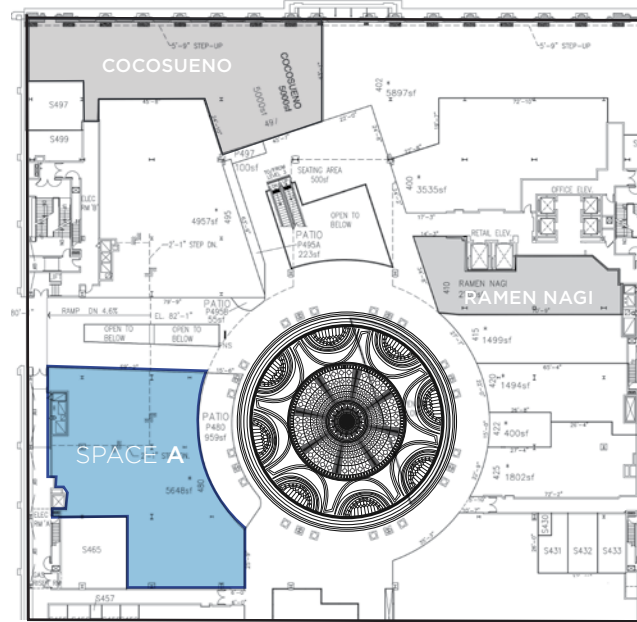
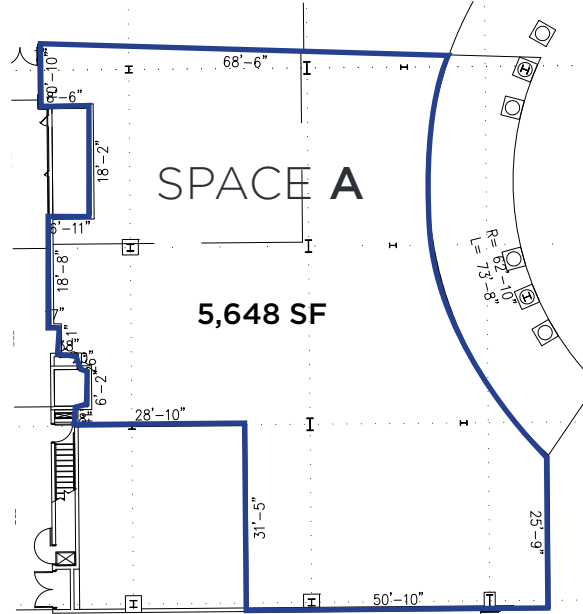
## BESPOKE

Neighboring Bespoke has over 20,000 sq. ft. of customizable tech-friendly coworking, event, and demonstration space. Annually, over 100 events attract 300-500 attendees, and approximately 150 members utilize the high-end coworking facilities daily. All these events represent numerous opportunities for catering and private dining and buy-outs for Under the Dome restaurants.

# OPPORTUNITIES UNDER THE DOME

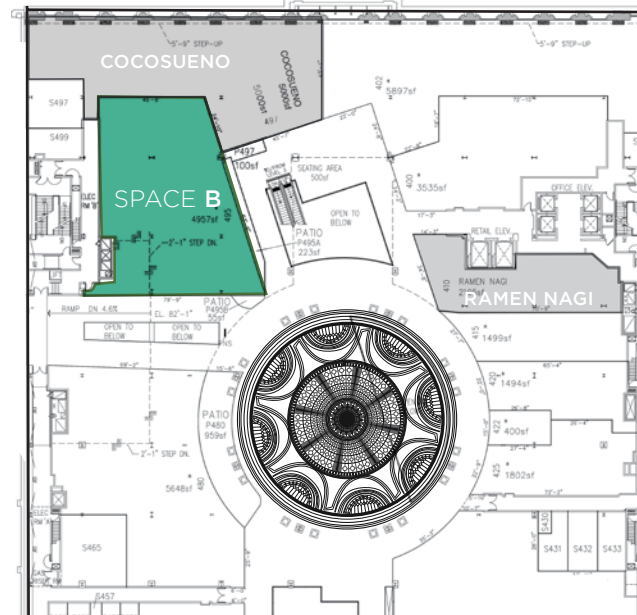
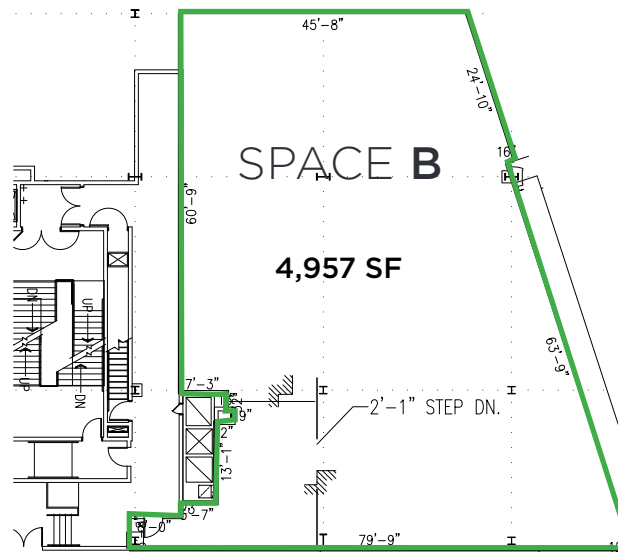
## SPACE A

- 4 Type 1 hood systems
- Prep space
- 3 compartment sink
- 2 walk-in fridges
- Ice machine
- Display refrigeration
- Aquarium
- 3 all gender ADA bathrooms
- Service stations
- Bar area
- Exhibition Kitchen
- Courtyard seating



## SPACE B

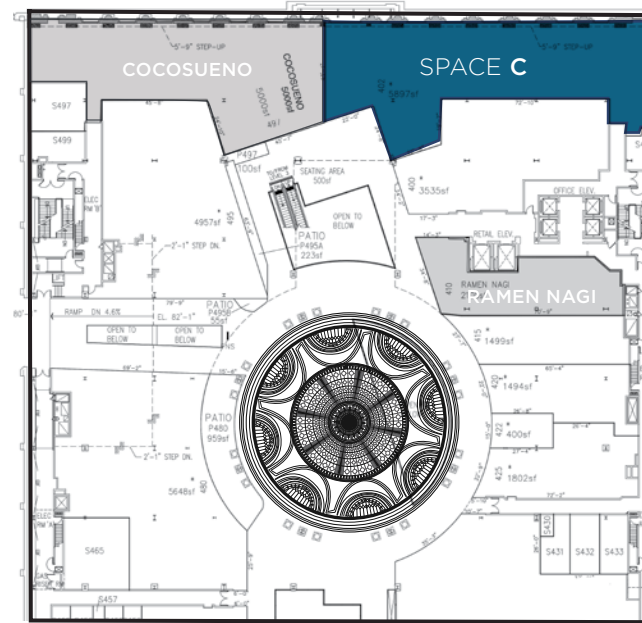
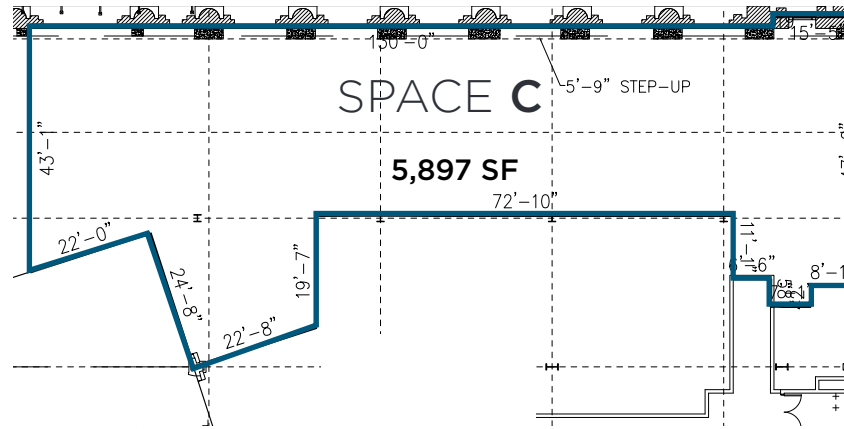
- 2 Type 1 hood systems
- Prep space
- 3 compartment sink
- Walk-in fridge
- Ice machine
- ADA bathroom
- Service stations
- Bar area
- Exhibition kitchen
- Private dining area
- Courtyard seating



# OPPORTUNITIES UNDER THE DOME

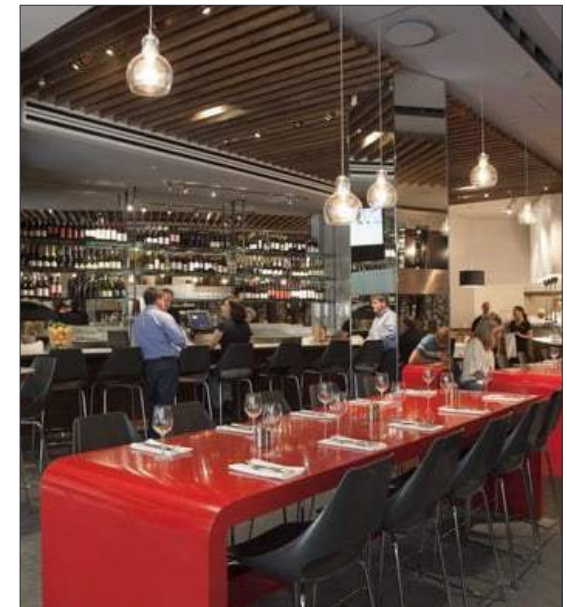
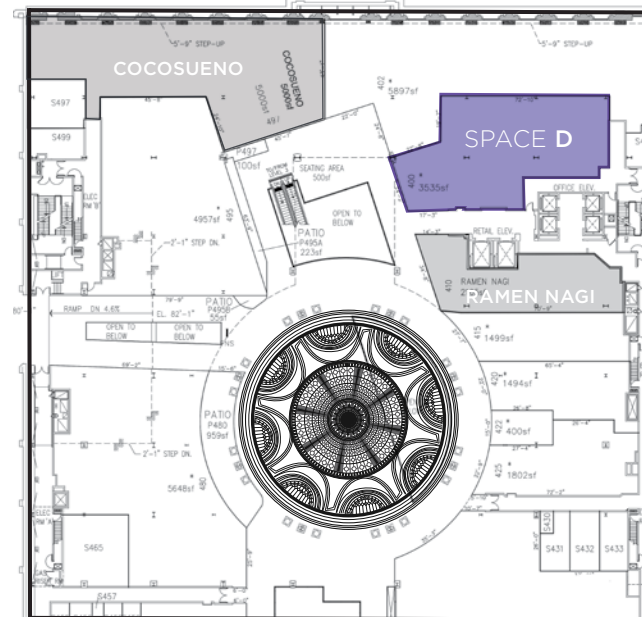
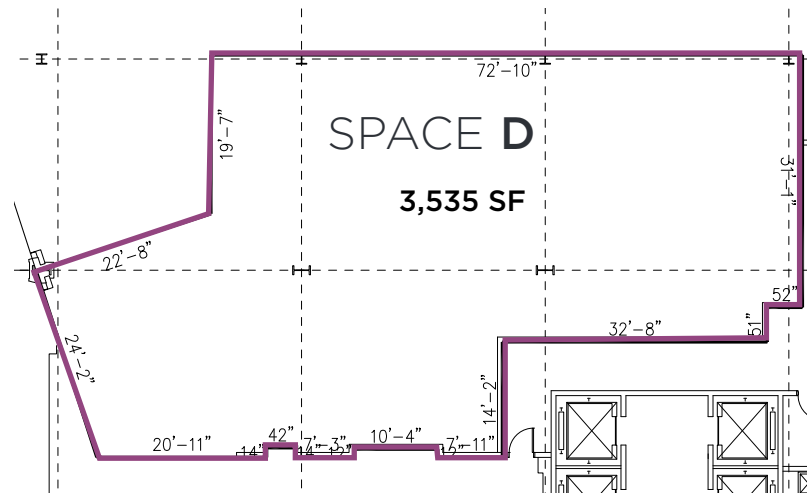
## SPACE C

- Type 1 hood x3
- Prep space
- Range x 3
- Ovens & Wolf Oven
- Rotisserie
- 3 comp sink
- Walk-in fridge x 2
- Freezer
- Fryer
- Separate ADA bathrooms for employees and guests
- Office space
- Service areas
- Bar area
- Private dining area
- Exhibition kitchen
- Large windows



## SPACE D

- 2 Type 1 hood systems
- Wood-fire pizza oven
- Prep space
- 3 compartment sink
- Walk-in fridge
- Ice machine
- ADA bathrooms
- Exhibition kitchen
- Covered courtyard seating



# WHAT'S HAPPENING UNDER THE DOME



**CURATED EVENTS**

- Comedy shows
- Live music
- Dancing
- Wine tasting

**WHAT'S NEW**

- Rooftop dining and fitness classes
- Indoor artisanal farmer's market
- Market Street Farmer's Market  
( between 4th and 5th Streets)
- Activated Jessie Street with seating, landscaping, lighting, and art pieces



# THE CENTER OF SAN FRANCISCO

## RESIDENTIAL DEVELOPMENT WITHIN 3 MILES

- THE PINNACLE AT NOB HILL - 206 UNITS
- MCALPIN APARTMENT - 72 UNITS
- RITZ-CARLTON - 52 UNITS
- JONES STREET TERRACE - 80 UNITS
- 65 ANNIE - 75 UNITS
- 520 GEARY - 88 UNITS
- THE PARAMOUNT - 486 UNITS
- GEARY COURTYARD APT. - 164 UNITS
- ONE HAWTHORNE - 165 UNITS
- O'FARRELL TOWERS - 101 UNITS
- 350 ELLIS - 96 UNITS



Transamerica Pyramid

**GRAND HYATT**  
660 ROOMS



**THE WESTIN ST. FRANCIS**  
SAN FRANCISCO ON UNION SQUARE  
1195 ROOMS

Salesforce Tower



**ST REGIS**  
SAN FRANCISCO  
260 ROOMS

**FOUR SEASONS**  
Hotels and Resorts  
277 ROOMS



Montgomery Station



Yerba Buena Gardens

**Marriott. MARQUIS**  
SAN FRANCISCO  
1500 ROOMS

**INTERCONTINENTAL**  
SAN FRANCISCO  
550 ROOMS

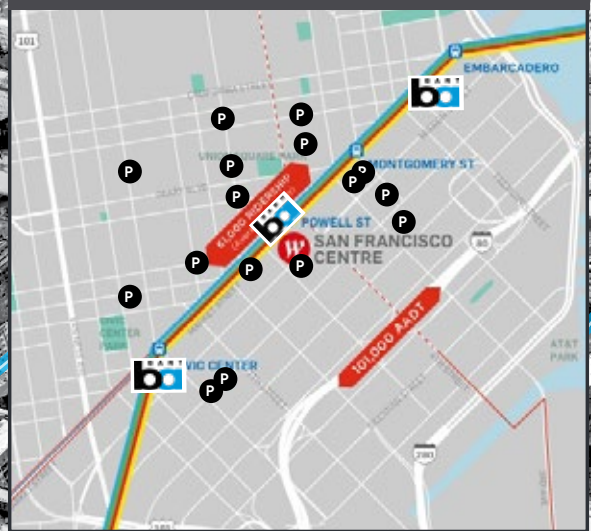
Powell Station



**hotel nikko**  
san francisco  
532 ROOMS

**PARC 55**  
A HILTON HOTEL  
1195 ROOMS

## PARKING GARAGES



O'Farrell Street

Ellis Street

Edy Street

Market Street



Mission Street



TURK STREET

GOLDEN GATE THEATER



Civic Center Station

## TRANSPORTATION

- 61,000 daily BART riders
- SFO is directly accessible in under 30 minutes from Powell Street station
- Powell Station sees the most ridership
- Mall access from station

**WESTFIELD SAN FRANCISCO CENTRE SOCIAL MEDIA**



**WEB SITE:** <https://www.westfield.com/sanfrancisco>



<https://www.instagram.com/westfieldsfcentre>



<https://www.facebook.com/westfieldsanfranciscocentre>

**CONTACTS**

**JACKLYN ARZIO**

office 510.207.4221  
jacklyn@mavenproperties.com  
DRE #01308296

**KRYSTAL CHANNICK**

office 858.231.2219  
krystal@mavenproperties.com  
DRE #01969079

**SANTINO DEROSE**

office 415.404.7337  
sd@mavenproperties.com  
DRE #01338326

**maven**  
RETAIL

NOTICE: This information has been secured from sources we believe to be reliable but we make no representations, warranties, express or implied, as to the accuracy of the information. Listing broker has been given enough information to provide only a preliminary interest in the property. The materials are not to be considered fact. The information contained herein is not a substitute for thorough due diligence investigation. References to square footage, zoning, use, or age are approximate. Please contact the San Francisco Planning Department to verify zoning at (415) 558-6378, as neither broker or landlord represent that this space is suitable for your use. Tenant or Buyer must verify the information at their own expense and bears all the risk for any inaccuracies. By receiving these materials you are agreeing to the disclaimers set forth herein. DRE#01878802