

153 COLUMBUS AVE

SAN FRANCISCO, CALIFORNIA

KRYSTAL CHANNICK

CELL: 858.231.2219

OFFICE: 415.462.5940

krystal@mavenproperties.com

DRE #01969079



maven

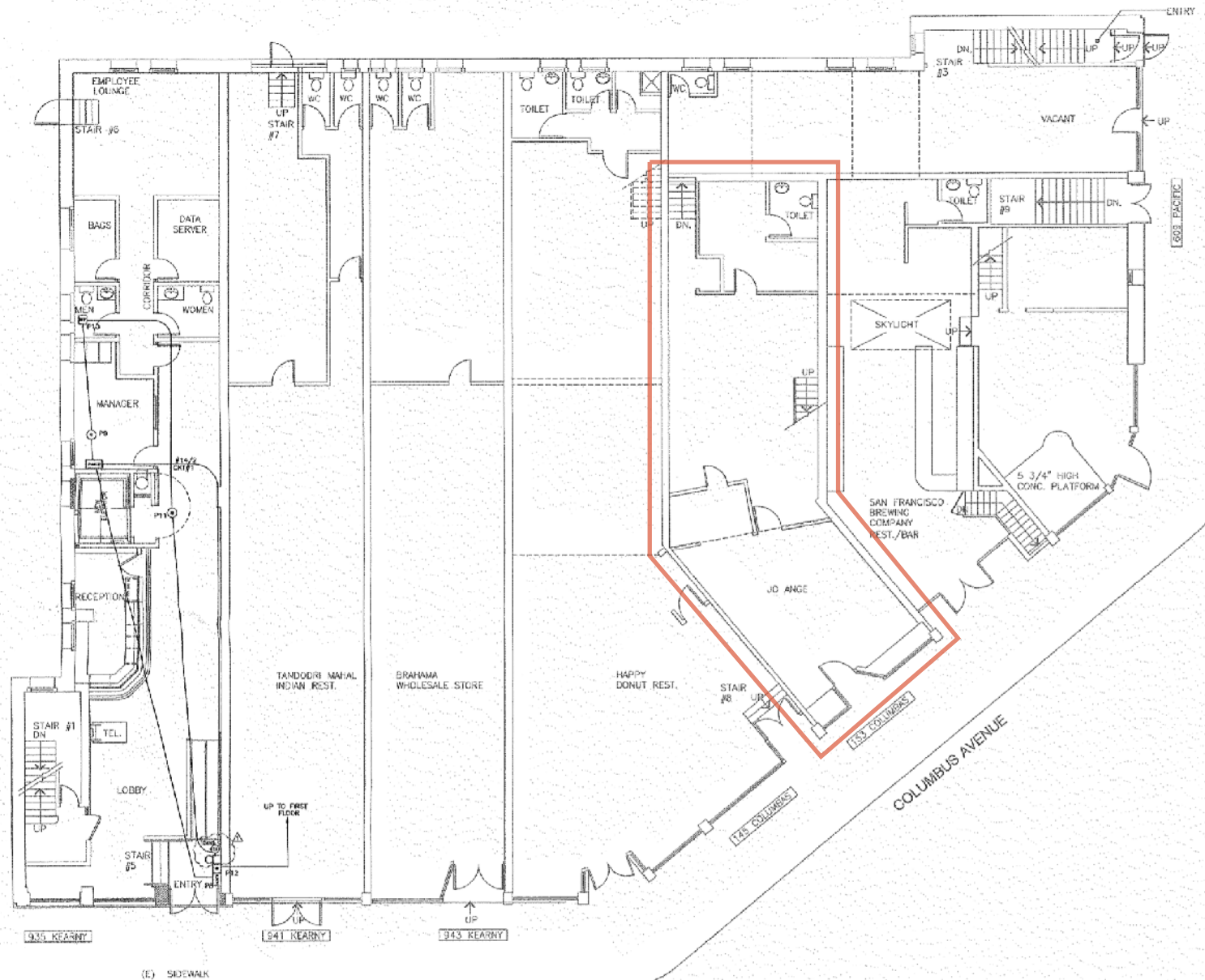
RETAIL • OFFICE • INDUSTRIAL



FEATURES

- 2,121 sq. ft. over 3 levels
- Built-out offices
- Existing ADA bathroom
- Basement storage available
- Lease term negotiable
- Tenant improvement money negotiable
- Please contact agent for more information





KEARNY STREET

GROUND FLOOR PLAN





WINE SHOP/SPECIALTY FOODS



FITNESS



SALON



CAFE (NO HOOD)

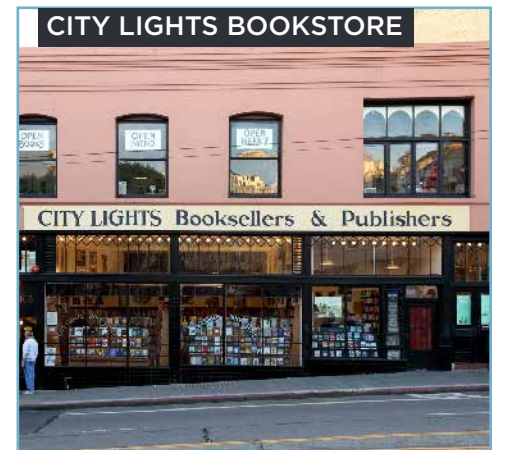


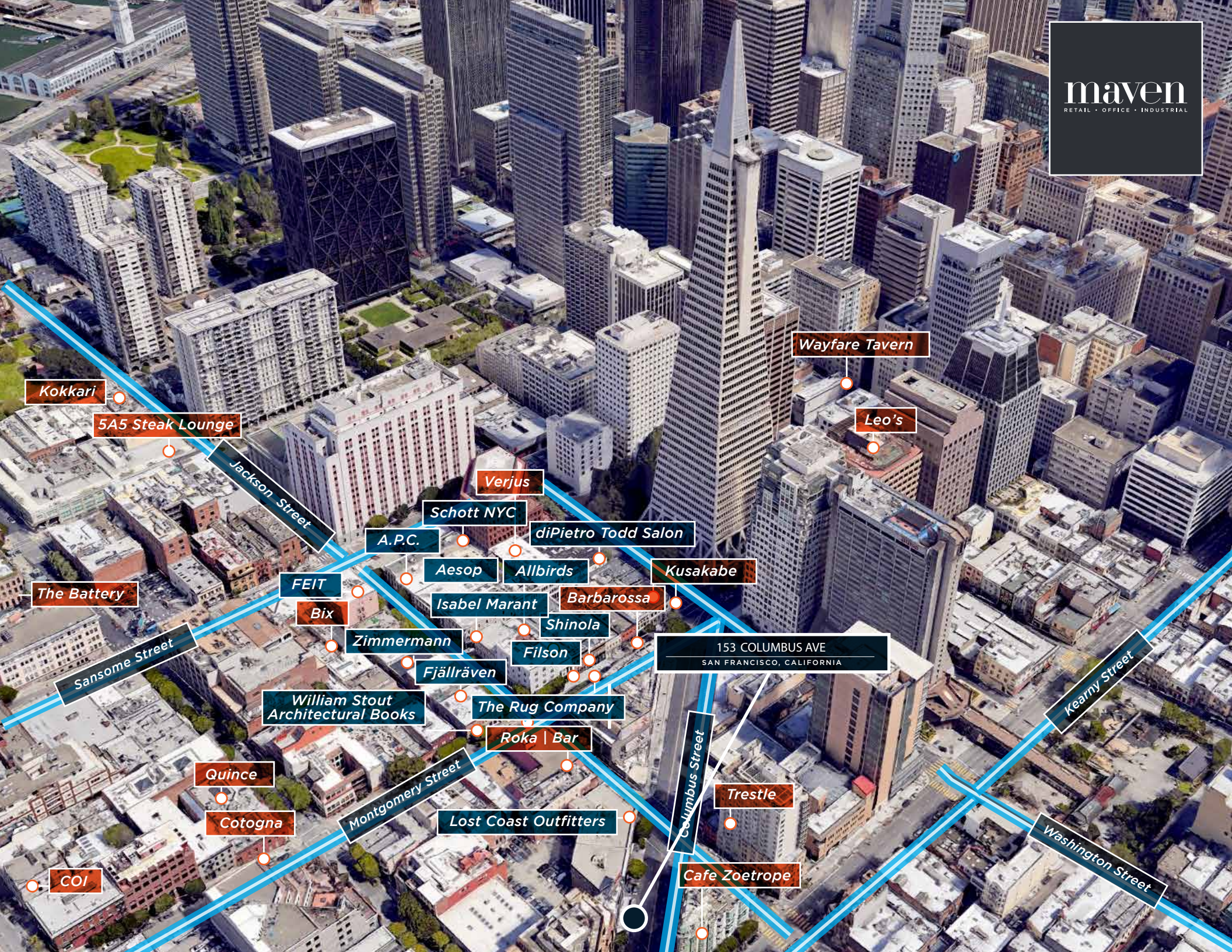
RETAIL



FINANCIAL SERVICES

Once part of the Barbary Coast, Jackson Square now a historic district is complimented by restaurants and retail merchants. Jackson Square is situated between North Beach and the Financial District with the TransAmerica building just one block away.





Kokkari

5A5 Steak Lounge

Jackson Street

The Battery

FEIT

Bix

Sansome Street

William Stout Architectural Books

Quince

Cotogna

COI

Verjus

Schott NYC

A.P.C.

Aesop

Allbirds

Isabel Marant

Zimmermann

Fjällräven

Filson

The Rug Company

Roka | Bar

Lost Coast Outfitters

diPietro Todd Salon

Kusakabe

Shinola

Barbarossa

153 COLUMBUS AVE
SAN FRANCISCO, CALIFORNIA

Columbus Street

Trestle

Cafe Zoetrope

Wayfare Tavern

Leo's

Kearny Street

Washington Street

153 COLUMBUS AVE

KRYSTAL CHANNICK

CELL: 858.231.2219

OFFICE: 415.462.5940

krystal@mavenproperties.com

DRE #01969079

maven
RETAIL • OFFICE • INDUSTRIAL

NOTICE: This information has been secured from sources we believe to be reliable but we make no representations, warranties, express or implied, as to the accuracy of the information. Listing broker has been given enough information to provide only a preliminary interest in the property. The materials are not to be considered fact. The information contained herein is not a substitute for thorough due diligence investigation. References to square footage, zoning, use, or age are approximate. Please contact the San Francisco Planning Department to verify zoning at (415) 558-6378, as neither broker or landlord represent that this space is suitable for your use. Tenant or Buyer must verify the information at their own expense and bears all the risk for any inaccuracies. By receiving these materials you are agreeing to the disclaimers set forth herein. DRE#01878802

466 Green Street Suite #203 | San Francisco, CA 94133 | 415.781.7700