

# 365 VERMONT STREET, SAN FRANCISCO, CA

13,000 SF SINGLE-OCCUPANCY OFFICE BUILDING | POTRERO HILL

**365** VERMONT  
STREET

maven  
OFFICE

## FEATURES

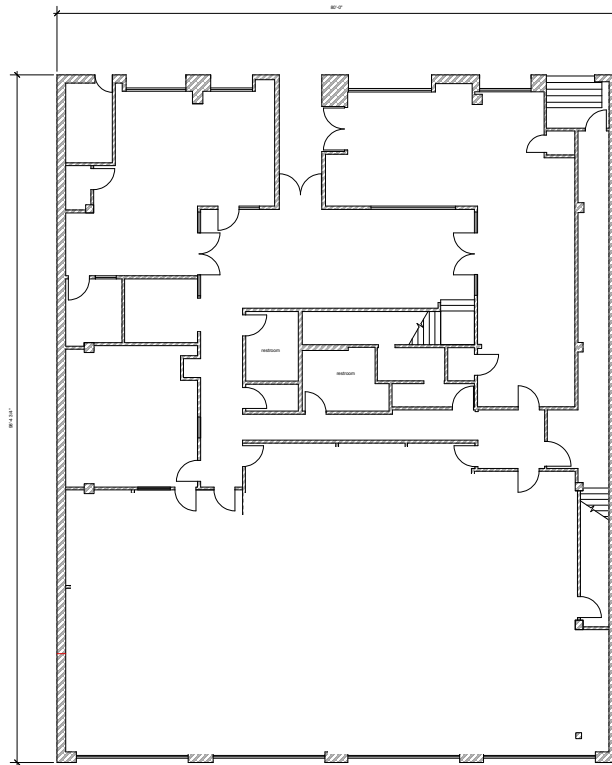
- +/- 13,000 SF office building located in the center of San Francisco's Potrero Hill neighborhood
- Full Building Identity
- Expansive atrium with oversized skylight
- Several open spaces surrounded by individual meeting rooms and perimeter offices
- Exclusive rooftop area with unobstructed downtown views
- Full kitchen potential, complete with Type I Hood
- Dedicated heating and air conditioning
- Hourly and monthly parking nearby
- Near public transportation and freeways, easy 101 access
- Close proximity to Whole Foods, Philz Coffee, 24 Hour Fitness, San Francisco Design Center

Chip Factory  
Est. 1924



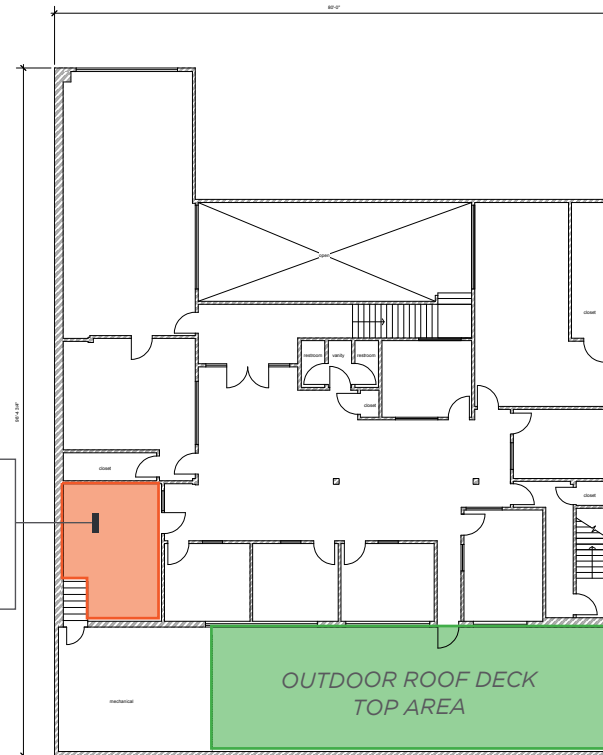
**FLOOR PLAN**

VERMONT STREET



**GROUND FLOOR**  
**+/- 8,000 RSF**

VERMONT STREET



**SECOND FLOOR**  
**+/- 5,000 RSF**

# 365 VERMONT STREET



CHASE CENTER

UCSF Health  
Mission Bay Campus

MISSION BAY

DOGPATCH

INTERSTATE CALIFORNIA  
280

INTERSTATE  
80

CALIFORNIA U.S.  
101

365 VERMONT STREET

RH  
RESTORATION HARDWARE

DESIGN WITHIN REACH



WHOLE FOODS MARKET

Philz Coffee  
ONE CUP AT A TIME

ANCHOR BREWING  
SINCE 1839  
SAN FRANCISCO

Taqueria

ALLEGRO COFFEE

Live Sushi Bar

Vermont Street

Utah Street

WELLS FARGO

Peets Coffee

SAFEWAY

Franklin Square

Chez maman east

De Haro Street

Kansas Street

16th Street

17th Street

Mariposa Street

18th Street

19th Street

20th Street

Carolina Street

15th Street

Alameda Street

94 76 89



CHEZ MAMAN EAST



WHOLE FOODS MARKET



ALLEGRO COFFEE

# POTRERO HILL NEIGHBORHOOD



ANCHOR BREWING



DESIGN WITHIN REACH



RESTORATION HARDWARE



CROSSFIT POTRERO HILL



PHILZ COFFEE



DESIGN CENTER



**365** VERMONT  
STREET  
SAN FRANCISCO | CALIFORNIA

**maven**  
RETAIL • OFFICE • INDUSTRIAL

**DOMINIC MORBIDELLI**

office 415.404.7314  
dom@mavenproperties.com  
DRE #02024348

**SANTINO DEROSE**

office 415.404.7337  
sd@mavenproperties.com  
DRE #01338326

NOTICE: This information has been secured from sources we believe to be reliable but we make no representations, warranties, express or implied, as to the accuracy of the information. Listing broker has been given enough information to provide only a preliminary interest in the property. The materials are not to be considered fact. The information contained herein is not a substitute for thorough due diligence investigation. References to square footage, zoning, use, or age are approximate. Please contact the San Francisco Planning Department to verify zoning at (415) 558-6378, as neither broker or landlord represent that this space is suitable for your use. Tenant or Buyer must verify the information at their own expense and bears all the risk for any inaccuracies. By receiving these materials you are agreeing to the disclaimers set forth herein. DRE#01878802

466 Green Street Suite #203 | San Francisco, CA 94133 | 415.781.7700