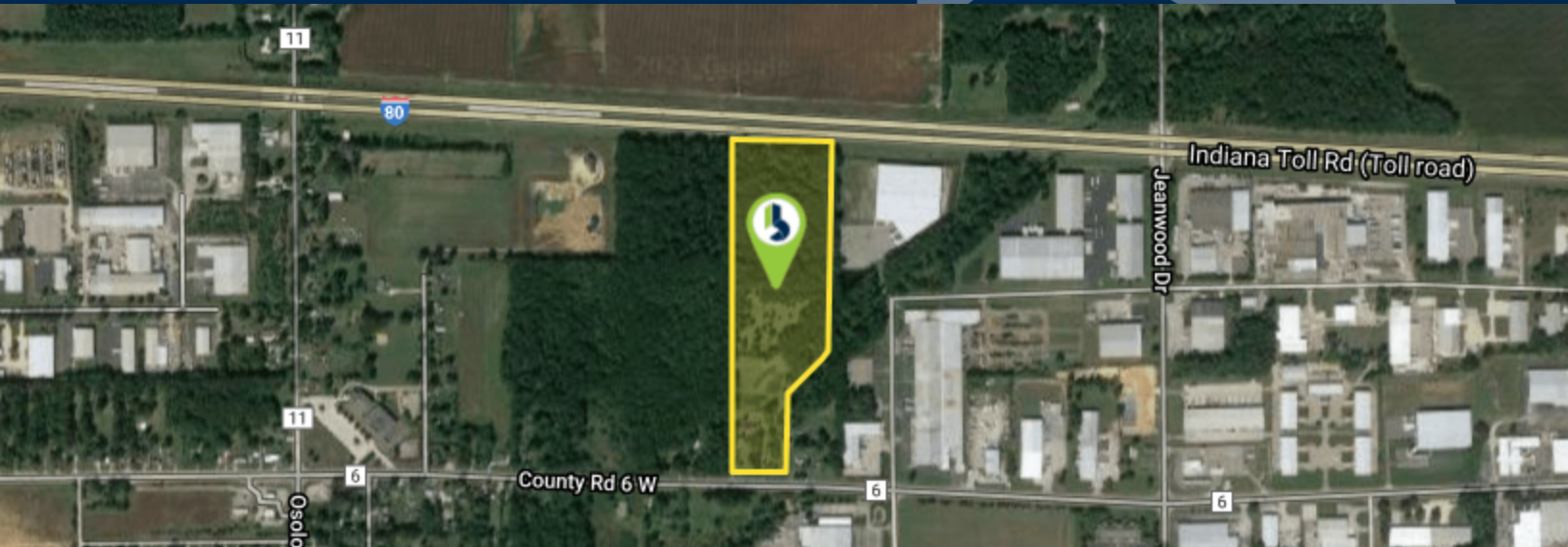


**FOR SALE**

**LAND**



## VL 2448 I CR 6

2448 I CR 6, ELKHART, IN 46514

### PROPERTY HIGHLIGHTS

- 26 ± acres for sale as industrial development land
- Almost 700' of Toll Road frontage and 235' of CR 6 frontage
- Access possible to Reedy Dr. and utilities in the Northland Industrial Park
- Currently zoned agricultural
- Must be sold as one parcel which includes a 5,000 SF house on CR 6

**SALE PRICE**

~~\$975,000.00~~

**\$897,000**

### OFFERING SUMMARY

Available SF:

Lot Size:

26.0 Acres

Zoning:

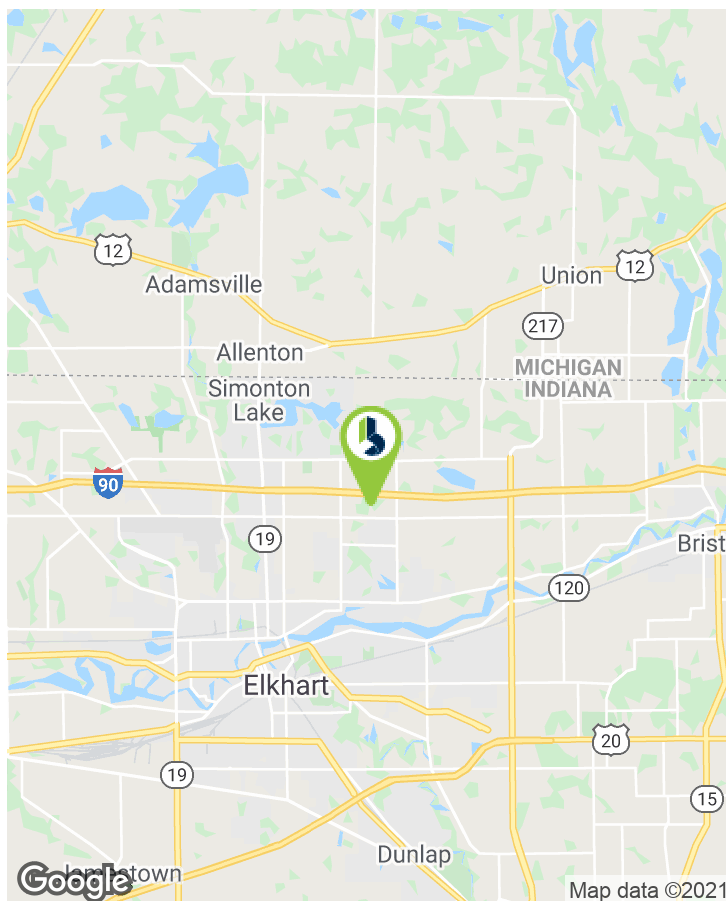
AG

Market:

Elkhart County

Price / SF:

\$0.79



**STEVE ELLISON**  
Senior Broker  
574.237.6002  
sellison@bradleyco.com

**JOHN O'BRIEN, CCIM**  
Senior Broker  
574.237.6005  
jobrien@bradleyco.com

©2021 Bradley Company, LLC and affiliates. Use of any third party name or mark is for informational purposes only and does not indicate sponsorship or endorsement by such party. Not all information has been independently verified, and the presenting broker makes no guarantee about its accuracy. Any projections, opinions, or estimates are for example only. Before completing a real estate transaction, you and your advisors should conduct an independent investigation of the property to determine its suitability for your needs.