

FOR LEASE OFFICE SPACE



1101 Noank-Ledyard Rd.
Mystic, CT 06355

Office on 1st floor for lease. Handicap accessible, located in professional building just off Route 184. Well maintained property. Elevator. Handicap accessible. Ample parking. Septic and two wells. Zone IM

Heather Gianacoplos
heatherg@pequotcommercial.com

Pequot Commercial

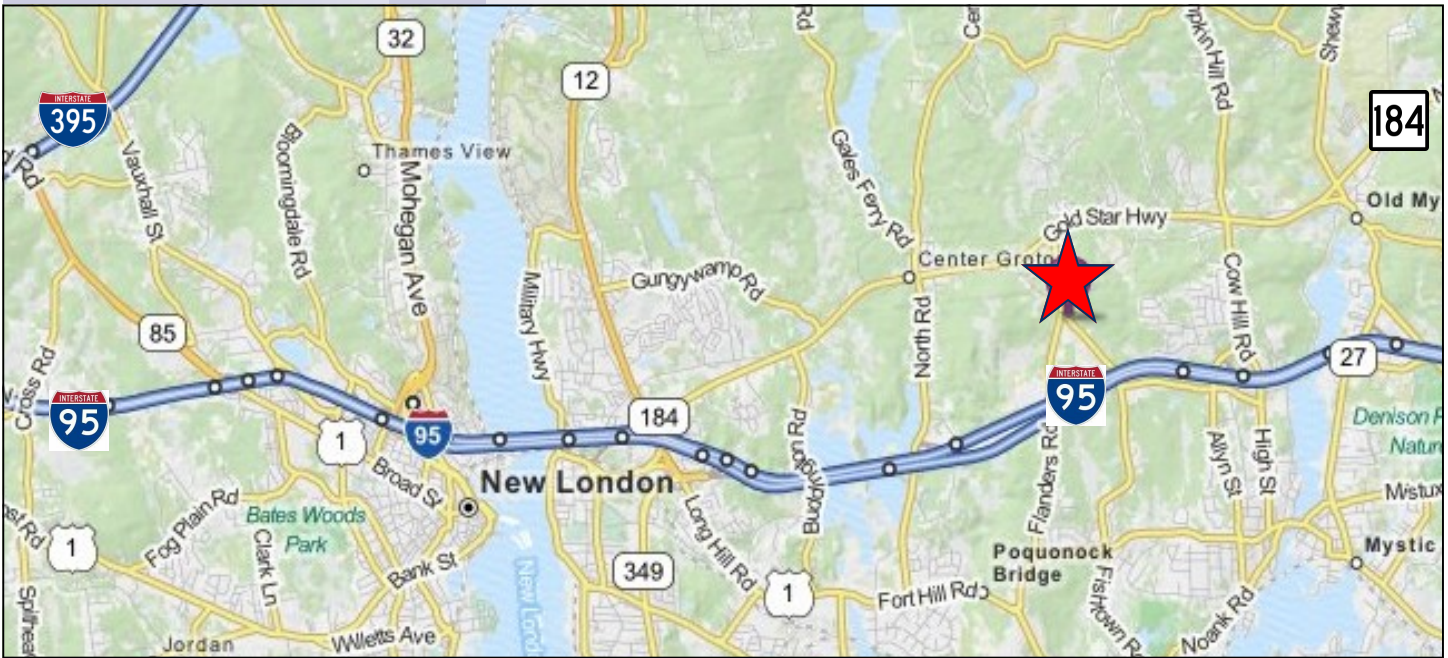
15 Chesterfield Road, Suite 4
East Lyme, CT 06333

860-447-9570 x153
860-444-6661 Fax

*1,150 sf Units #4+5
on 1st floor*

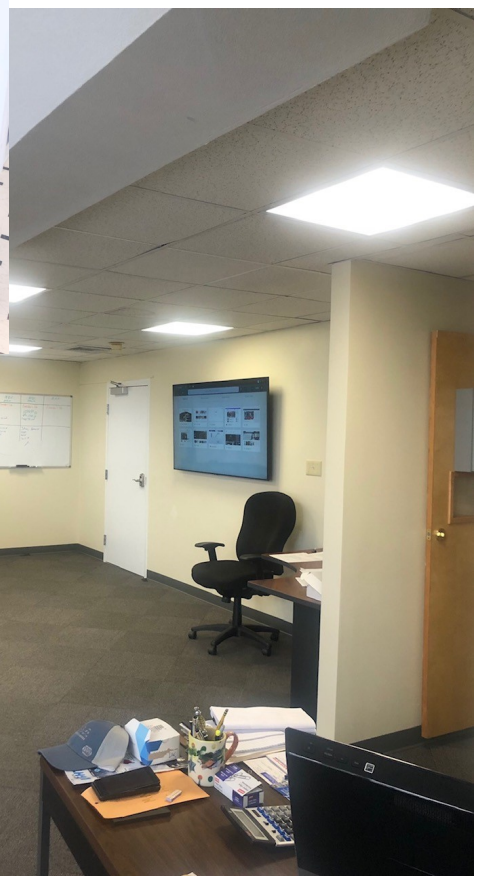


FOR LEASE
\$1,150/mo NNN
plus utilities



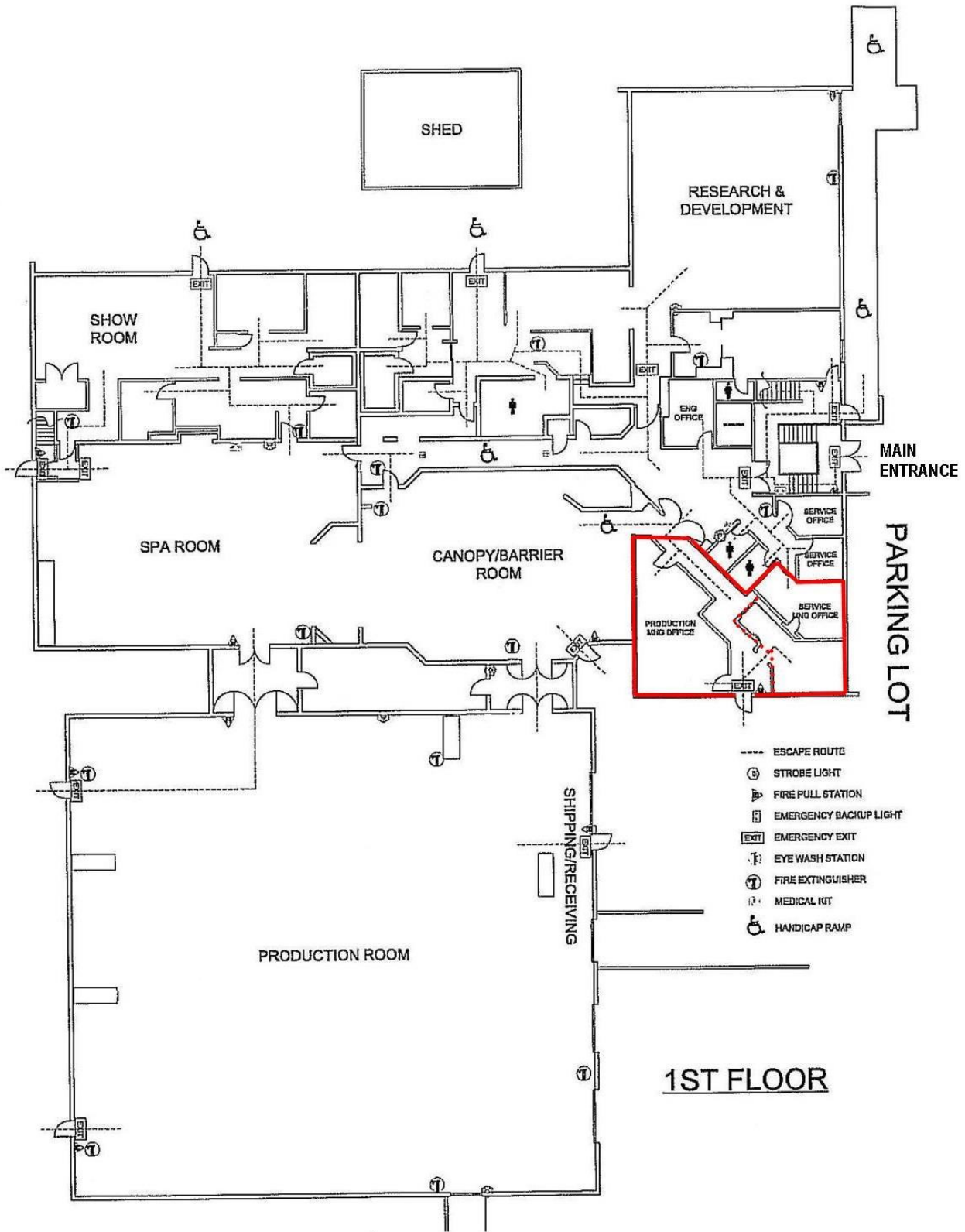
| DEMOGRAPHICS | 3 MILE | 5 MILE | 10 MILE |
|--------------------------------------|---------------|---------------|----------------|
| Total Population | 20,945 | 52,725 | 150,714 |
| Total Households | 9,462 | 22,291 | 64,214 |
| Household Income \$0—\$30,000 | 15.89% | 17.16% | 21.90% |
| \$30,001-\$60,000 | 20.57% | 22.08% | 22.05% |
| \$60,001-\$100,000 | 25.15% | 26.07% | 23.68% |
| \$100,001+ | 38.37% | 34.68% | 32.36% |

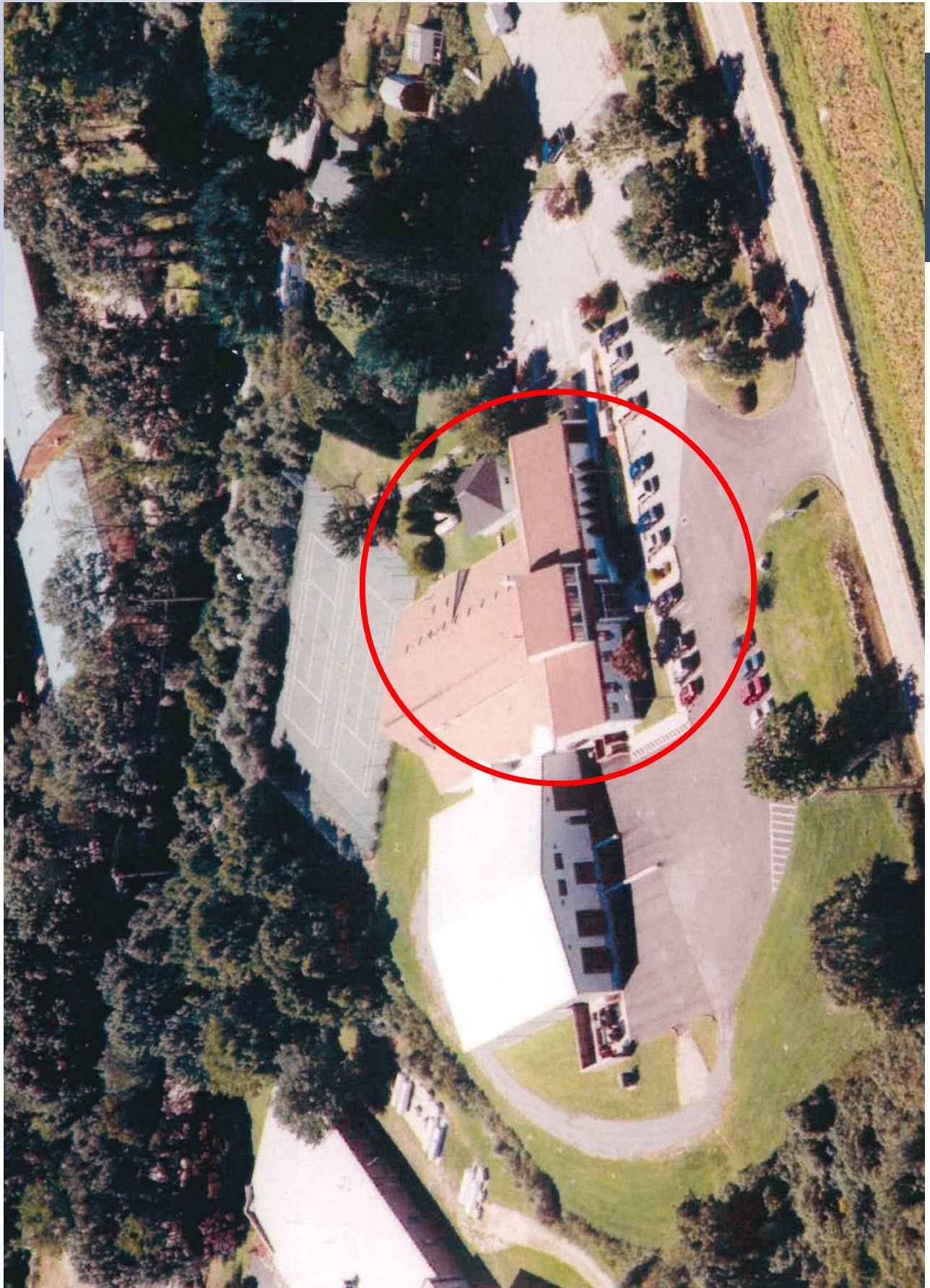
Information deemed reliable but not guaranteed and offerings subject to errors, omissions, change of price or withdrawal without notice.



Information deemed reliable but not guaranteed and offerings subject to errors, omissions, change of price or withdrawal without notice.

UNITS #4+5 1st FLOOR 1,150 SF





Information deemed reliable but not guaranteed and offerings subject to errors, omissions, change of price or withdrawal without notice.