



501

JACKSON

SAN FRANCISCO, CALIFORNIA

**6,021 SF GROUND FLOOR RETAIL +
FULL LOWER LEVEL
(ALL CAN BE DEMISED)**

C-2 ZONING / FORMULA RETAIL ALLOWED

COFFEE TEA BAKERY



KNOT STANDARD

PAPER

maven
RETAIL

POTENTIAL USES | C-2 ZONING/JACKSON SQUARE SUD



FASHION



FITNESS



FORMULA RETAIL



SALON



INSTITUTIONAL USES/EDUCATION



DESIGN PROFESSIONAL



RETAIL



ARTS ACTIVITIES



FINANCIAL SERVICES



WINE SHOP/SPECIALTY FOODS



HOME GOODS



RETAIL PROFESSIONAL SERVICES

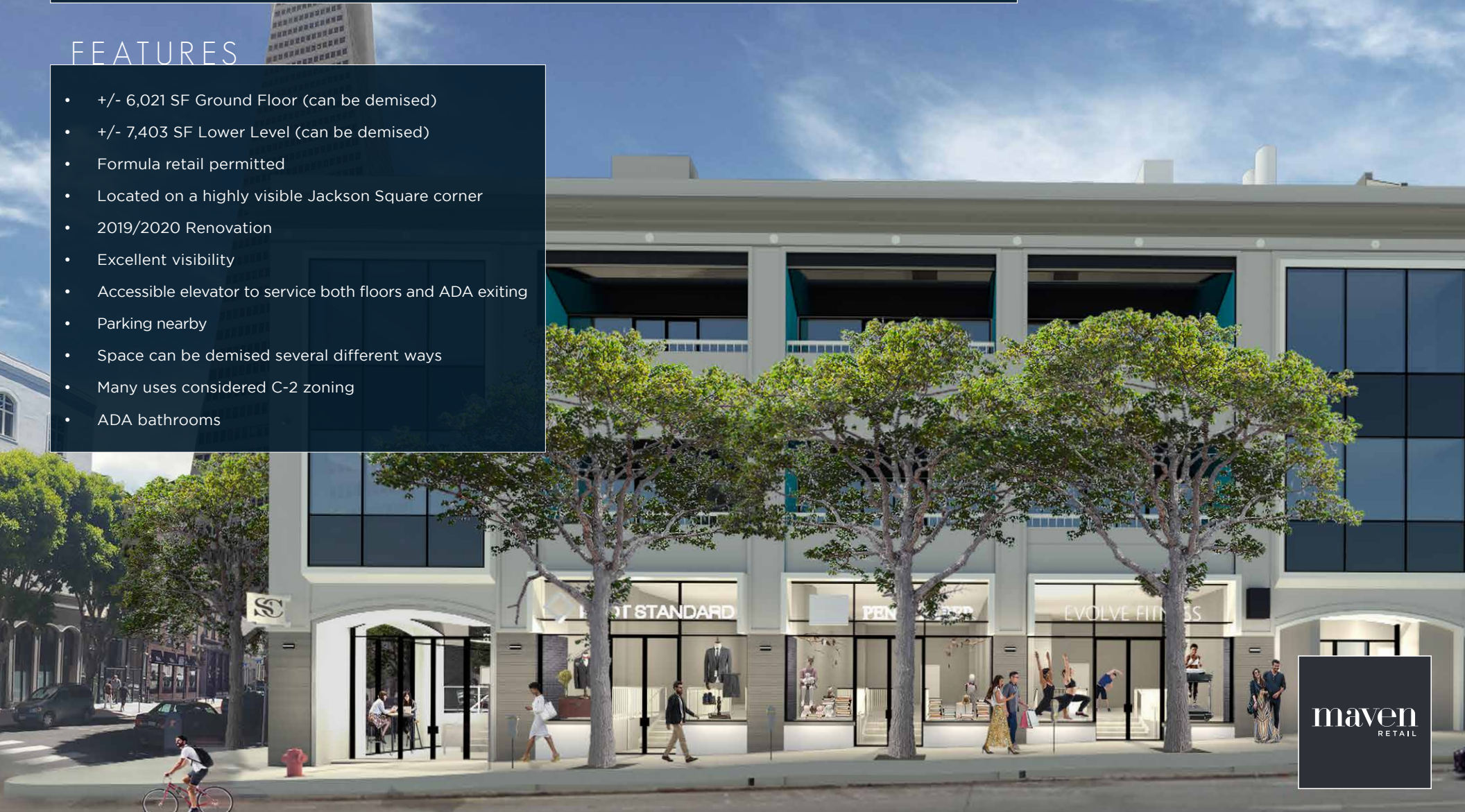
NEW TO MARKET

Situated within the epicenter of the Financial District at Montgomery and Jackson, 501 Jackson offers up to 13,424 sq. ft. on two levels of upscale commercial space. Surrounded by top-tier dining and hospitality, convenient accessibility to transit, and located amongst a diverse mix of local, national, and international tenant mixes, 501 Jackson has it all to offer. Neighbors include various high end fashion, trending cafes and restaurants and tech-savvy businesses, government affiliated businesses, high end bar concepts, fine dining establishments and much more.



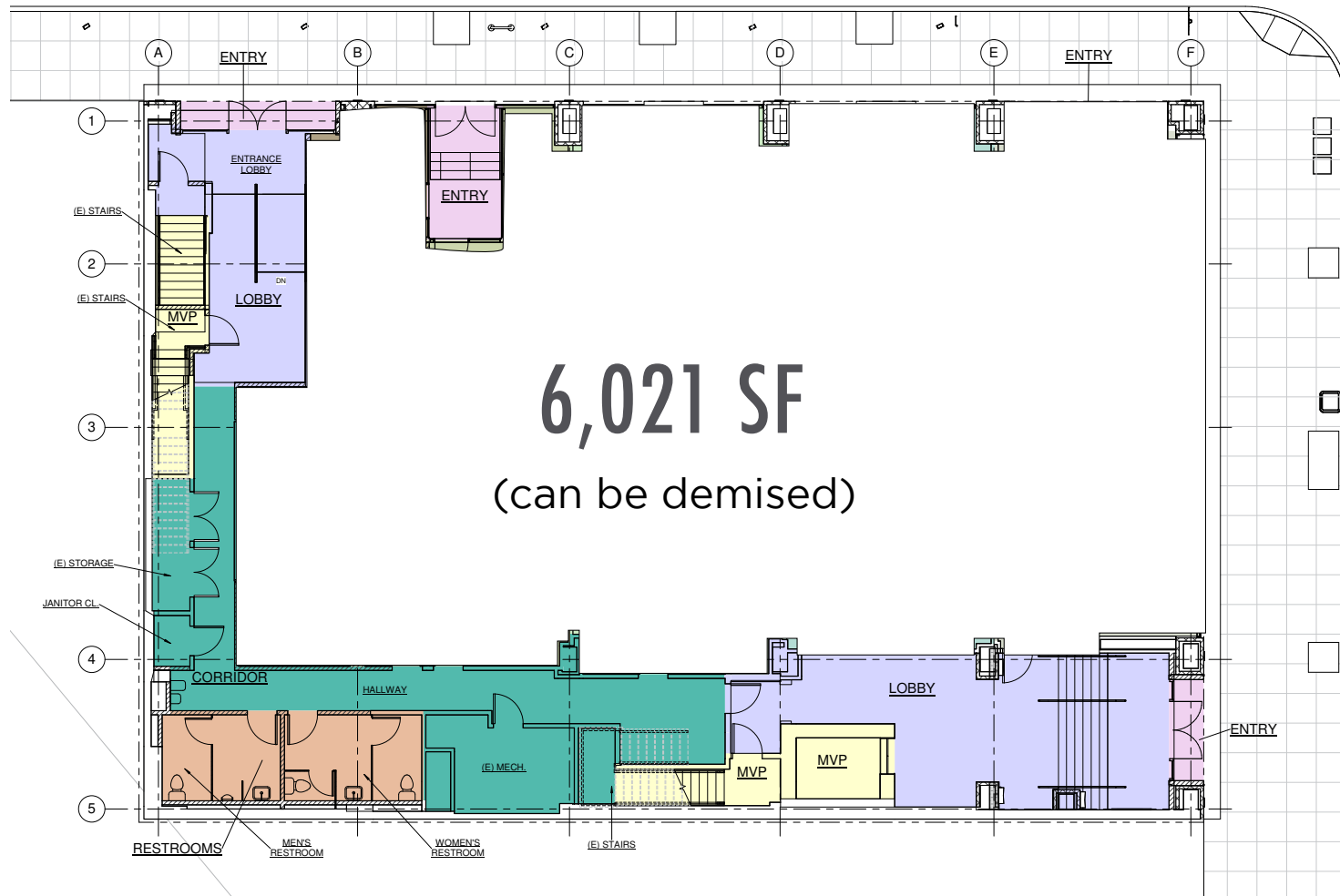
FEATURES

- +/- 6,021 SF Ground Floor (can be demised)
- +/- 7,403 SF Lower Level (can be demised)
- Formula retail permitted
- Located on a highly visible Jackson Square corner
- 2019/2020 Renovation
- Excellent visibility
- Accessible elevator to service both floors and ADA exiting
- Parking nearby
- Space can be demised several different ways
- Many uses considered C-2 zoning
- ADA bathrooms



maven
RETAIL

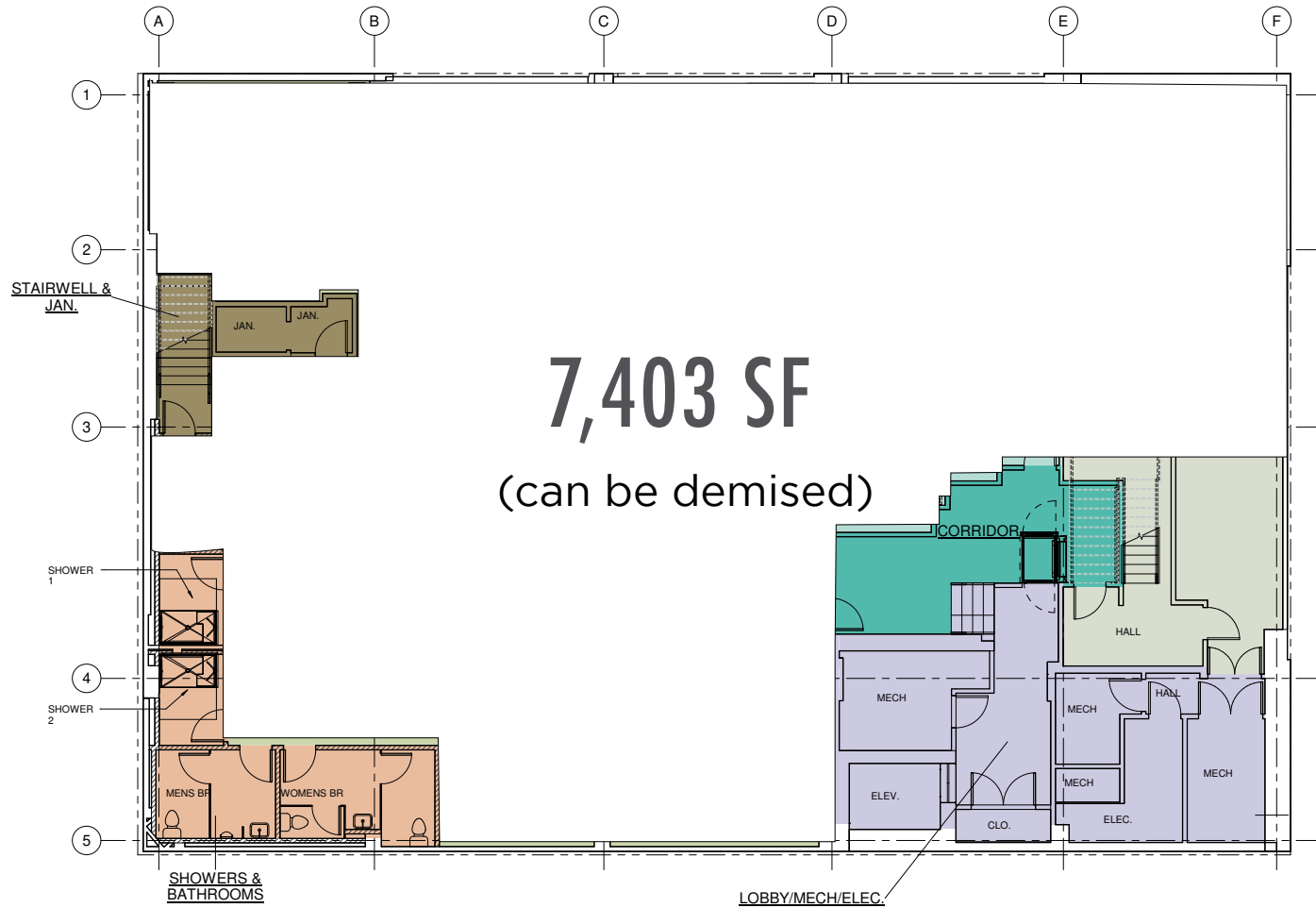
JACKSON STREET



MONTGOMERY STREET

GROUND LEVEL

JACKSON STREET



MONTGOMERY STREET

LOWER LEVEL



Kokkari

5A5 Steak Lounge

The Battery

FEIT

Bix

Sansome Street

Quince

Cotogna

COI

Zimmermann

William Stout
Architectural Books

Montgomery Street

Lost Coast Outfitters

Fjällräven

The Rug Company

Roka | Bar

A.P.C.

Aesop

Isabel Marant

Filson

Fjällräven

The Rug Company

Roka | Bar

Lost Coast Outfitters

Lost Coast Outfitters

Lost Coast Outfitters

Lost Coast Outfitters

Lost Coast Outfitters

Lost Coast Outfitters

Verjus

Schott NYC

A.P.C.

Aesop

Isabel Marant

Zimmermann

Fjällräven

The Rug Company

Roka | Bar

Lost Coast Outfitters

Lost Coast Outfitters

Lost Coast Outfitters

Lost Coast Outfitters

Lost Coast Outfitters

Lost Coast Outfitters

diPietro Todd Salon

Allbirds

Barbarossa

Shinola

Filson

Filson

Filson

Filson

Filson

Filson

Filson

Filson

Filson

501 JACKSON

Bask

Trestle

Cafe Zoetrope

Wayfare Tavern

Leo's

501 JACKSON

Bask

Trestle

Cafe Zoetrope



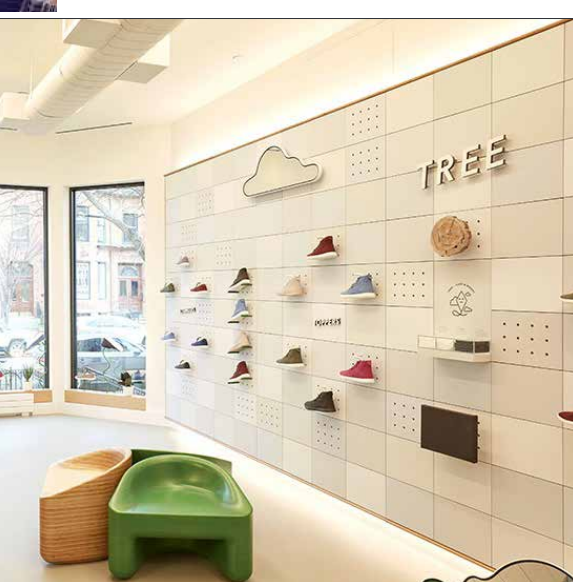
ALLBIRDS



VERJUS



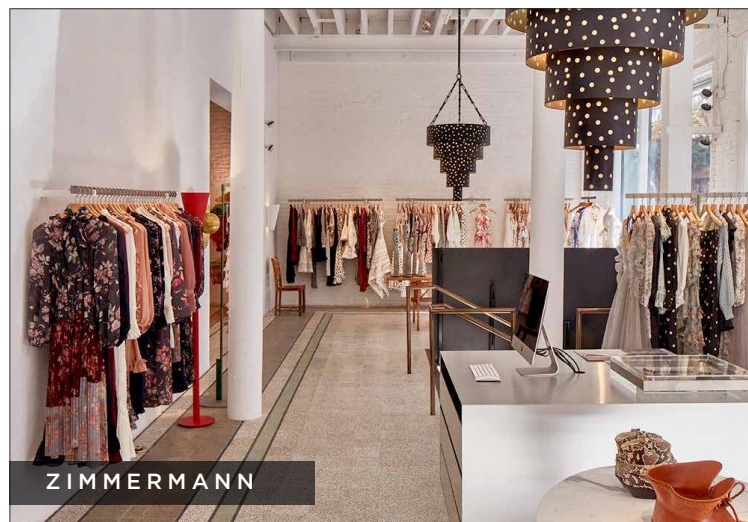
COTOGNA



BARBAROSSA



WAYFARE TAVERN



ZIMMERMANN



ISABEL MARANT



SHINOLA



KUSAKABE



ROKA AKOR

501

JACKSON

SAN FRANCISCO, CALIFORNIA

maven
RETAIL • OFFICE • INDUSTRIAL

PAMELA MENDELSON

office 415.404.6650

pam@mavenproperties.com

DRE #00953050

SARAH BRETT SCHWARTZ

office 415.404.6959

sarah@mavenproperties.com

DRE #01903152

NOTICE: This information has been secured from sources we believe to be reliable but we make no representations, warranties, express or implied, as to the accuracy of the information. Listing broker has been given enough information to provide only a preliminary interest in the property. The materials are not to be considered fact. The information contained herein is not a substitute for thorough due diligence investigation. References to square footage, zoning, use, or age are approximate. Please contact the San Francisco Planning Department to verify zoning at (415) 558-6378, as neither broker or landlord represent that this space is suitable for your use. Tenant or Buyer must verify the information at their own expense and bears all the risk for any inaccuracies. By receiving these materials you are agreeing to the disclaimers set forth herein. DRE#01878802

466 Green Street Suite #203 | San Francisco, CA 94133 | 415.781.7700