



# 700 & 702 | KEARNY

FINANCIAL DISTRICT RETAIL/CAFÉ OPPORTUNITIES

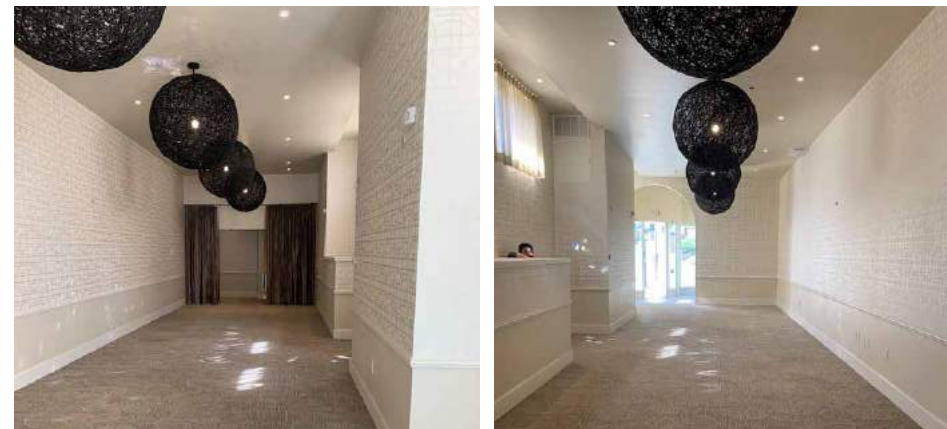
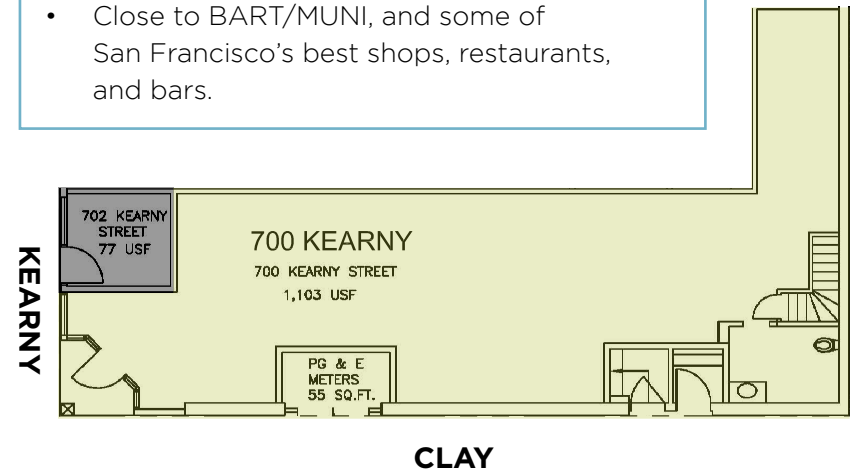
maven  
RETAIL



**700 Kearny** situated at the corner of Kearny & Clay Streets, also at the foot of the Transamerica Pyramid, and at a choice intersection of San Francisco's North Beach, Financial District, Jackson Square and Chinatown districts. Recent ownership has renovated and modernized the building, upgrading storefronts and creating a unique retail location for the urban professionals and neighbors living and working in the surrounding neighborhoods.

## FEATURES

- +/- 1,103 SF plus some additional basement
- Renovated storefront
- Excellent foot traffic
- Excellent visibility
- Lower Level Storage
- Close to BART/MUNI, and some of San Francisco's best shops, restaurants, and bars.

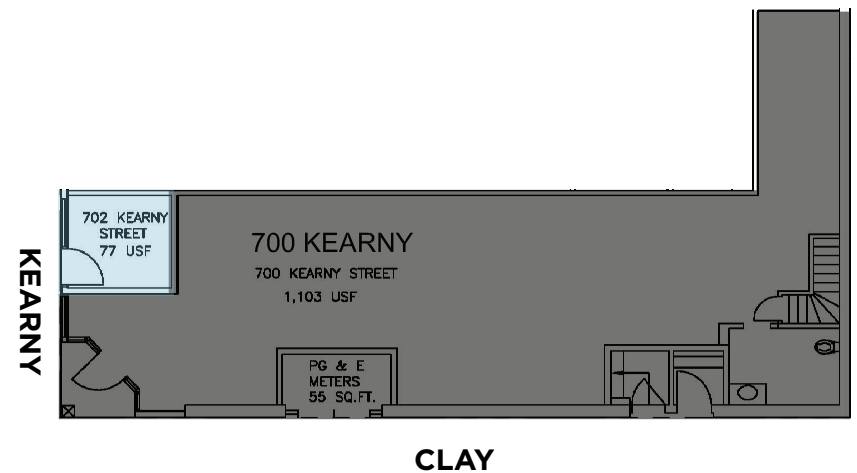




**702 Kearny** situated at the corner of Kearny & Clay Streets, also at the foot of the Transamerica Pyramid, and at a choice intersection of San Francisco's North Beach, Financial District, Jackson Square and Chinatown districts.

## FEATURES

- +/- 200 SF - can be combined with adjacent space
- Excellent foot traffic
- Excellent visibility
- Lower Level Storage
- Close to BART/MUNI, and some of San Francisco's best shops, restaurants, and bars.





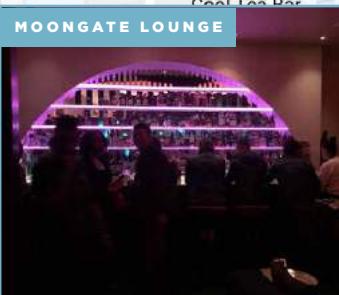
ISABEL MARANT



ROKA AKOR



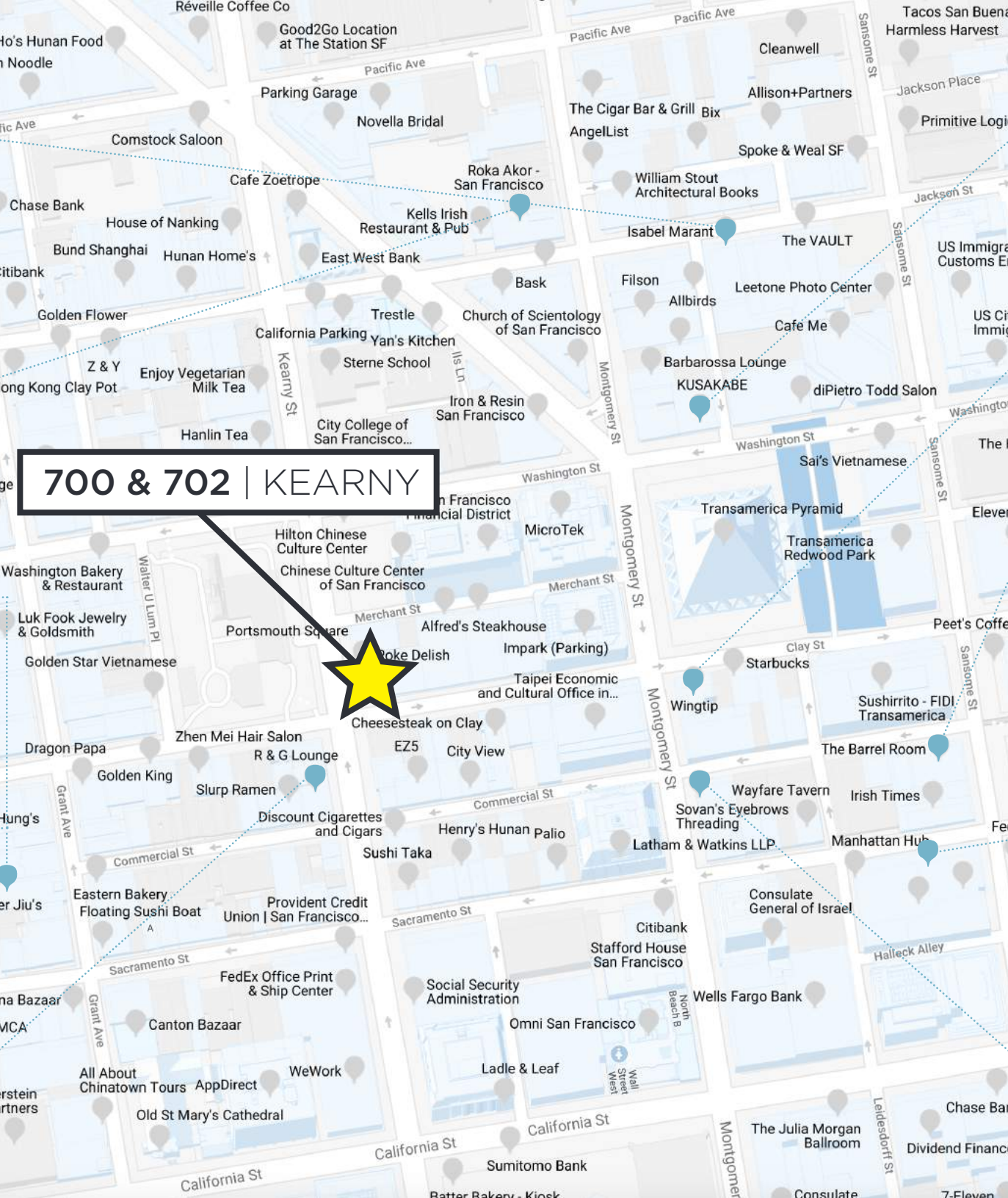
MISTER JIU'S



MOONGATE LOUNGE



R & G LOUNGE



700 & 702 | KEARNY



KUSAKABE



WINGTIP



THE BARREL ROOM



ORANGETHEORY FITNESS



WAYFARE TAVERN

Chez BeeSen

Block Advisors

# 700 & 702 | KEARNY • Notable Neighbors



# NEIGHBORHOOD



# 700 & 702 | KEARNY

FINANCIAL DISTRICT RETAIL/CAFÉ OPPORTUNITIES

**maven**  
RETAIL • OFFICE • INDUSTRIAL

**SARAH BRETT SCHWARTZ**  
office 415.404.6959  
sarah@mavenproperties.com  
DRE #01903152

**PAM MENDELSON**  
office 415.404.6650  
pam@mavenproperties.com  
DRE #00953050

NOTICE: This information has been secured from sources we believe to be reliable but we make no representations, warranties, express or implied, as to the accuracy of the information. Listing broker has been given enough information to provide only a preliminary interest in the property. The materials are not to be considered fact. The information contained herein is not a substitute for thorough due diligence investigation. References to square footage, zoning, use, or age are approximate. Please contact the San Francisco Planning Department to verify zoning at (415) 558-6378, as neither broker or landlord represent that this space is suitable for your use. Tenant or Buyer must verify the information at their own expense and bears all the risk for any inaccuracies. By receiving these materials you are agreeing to the disclaimers set forth herein. DRE#01878802

466 Green Street Suite #203 | San Francisco, CA 94133 | 415.781.7700