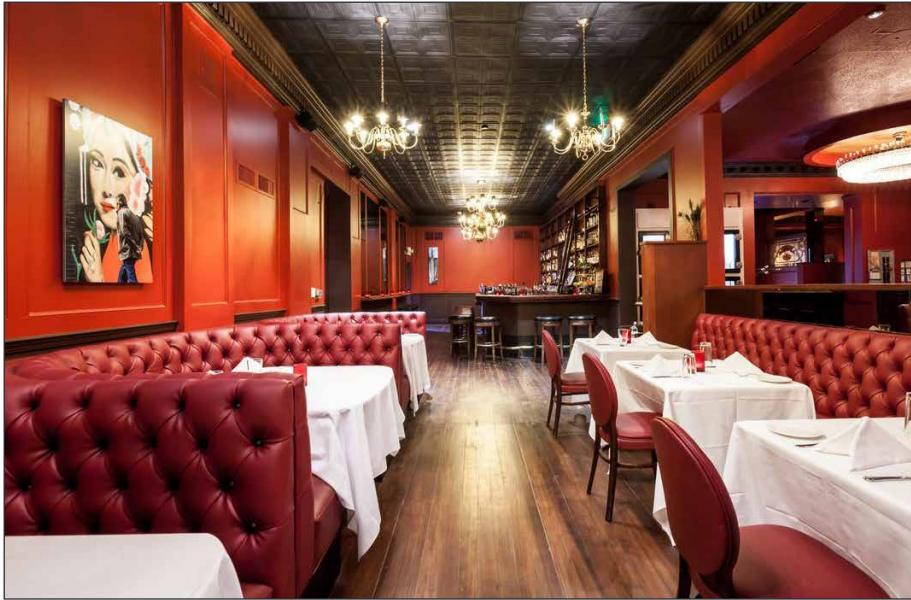


659 Merchant



RESTAURANT
OPPORTUNITY

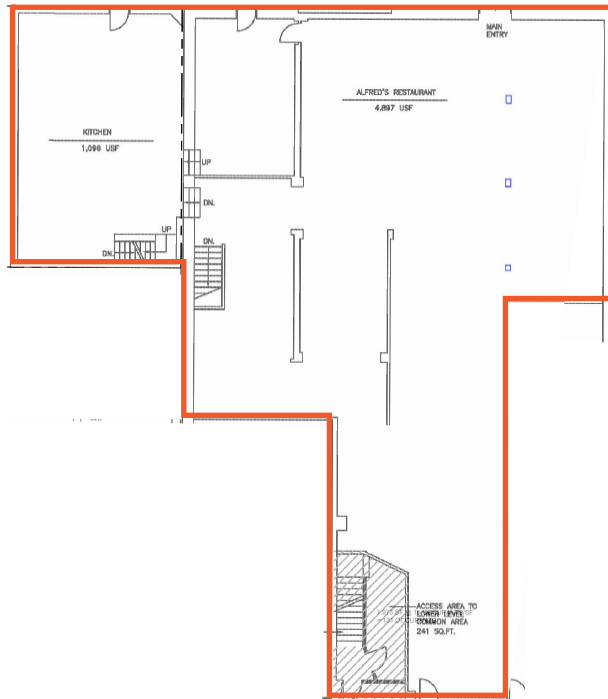




FEATURES

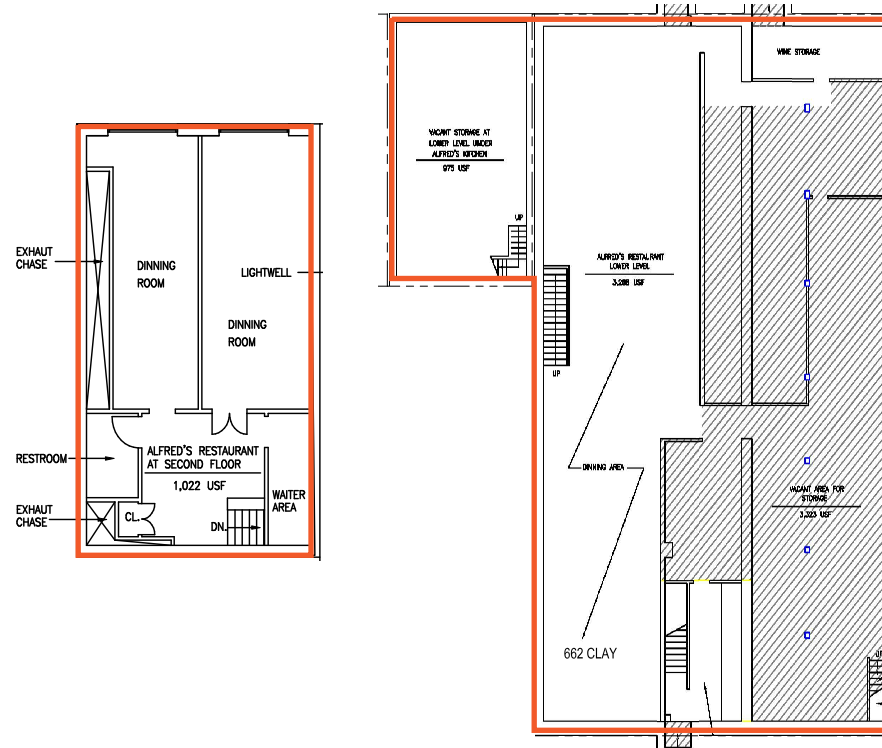
- Conveniently located between Financial District, Chinatown, and Jackson Square
- Located near several major hotels and companies
- Accessible on Merchant and Clay
- Fully built-out restaurant with liquor license
- 99 person occupancy
- Landlord will do long term extension of the lease
- Landmark property with history

6,144 SF ON GROUND



CLAY STREET

7,566 SF IN BASEMENT



CLAY STREET



NICO



KUSAKABE



VERJUS



BARBAROSSA LOUNGE



ROKA AKOR



LEO'S OYSTER BAR



WAYFARE TAVERN



BIX RESTAURANT



CAFE ZOETROPE

659 Merchant

maven
RETAIL • OFFICE • INDUSTRIAL

PAMELA MENDELSON

office 415.404.6650
pam@mavenproperties.com
DRE #00953050

SARAH BRETT SCHWARTZ

office 415.404.6959
sarah@mavenproperties.com
DRE #01903152

NOTICE: This information has been secured from sources we believe to be reliable but we make no representations, warranties, express or implied, as to the accuracy of the information. Listing broker has been given enough information to provide only a preliminary interest in the property. The materials are not to be considered fact. The information contained herein is not a substitute for thorough due diligence investigation. References to square footage, zoning, use, or age are approximate. Please contact the San Francisco Planning Department to verify zoning at (415) 558-6378, as neither broker or landlord represent that this space is suitable for your use. Tenant or Buyer must verify the information at their own expense and bears all the risk for any inaccuracies. By receiving these materials you are agreeing to the disclaimers set forth herein. DRE#01878802

466 Green Street Suite #203 | San Francisco, CA 94133 | 415.781.7700