

OFFICE BUILDING | FOR LEASE

# JACKSON STREET CORNER

200 W JACKSON ST, RIDGELAND, MS 39157



## PROPERTY DESCRIPTION

The Cress Group is pleased to offer for lease 2975 rentable feet located in the historic Jackson Street District in Ridgeland. The space is part of a larger office development with uses such as legal services and light medical services. Priced at \$23/SQ full service including utilities and janitorial this space is located on the corner overlooking the railroad district and Jackson Street. The space is located on the second floor with direct elevator access. Enjoy convenient access to Interstate 55 and Hwy 51. Available in March of 2020.

## PROPERTY HIGHLIGHTS

- Approximately 2975 SF Office Space
- 9 Offices / Large Conference Room / Work Room Full Kitchen /
- Large Reception / Janitorial Closet
- Heart of Jackson Street District
- Top Floor Space with Elevator Access
- \$23/SQ Full Service

## OFFERING SUMMARY

Lease Rate:	\$23.00 SF/month (Full Service)
Number of Units:	1
Available SF:	2,975 SF
Lot Size:	3,100 SF
Building Size:	5,950 SF

DEMOGRAPHICS	1 MILE	3 MILES	5 MILES
Total Households	1,198	14,564	35,623
Total Population	3,195	35,265	87,407
Average HH Income	\$83,545	\$79,501	\$79,578

### CHAD HIRN, CCIM

Principal Broker/Investment Brokerage  
601.707.1300  
chirn@cresscre.com



THE CRESSGROUP  
Commercial Real Estate Services

OFFICE BUILDING | FOR LEASE

# JACKSON STREET CORNER

200 W JACKSON ST, RIDGELAND, MS 39157



**CHAD HIRN, CCIM**

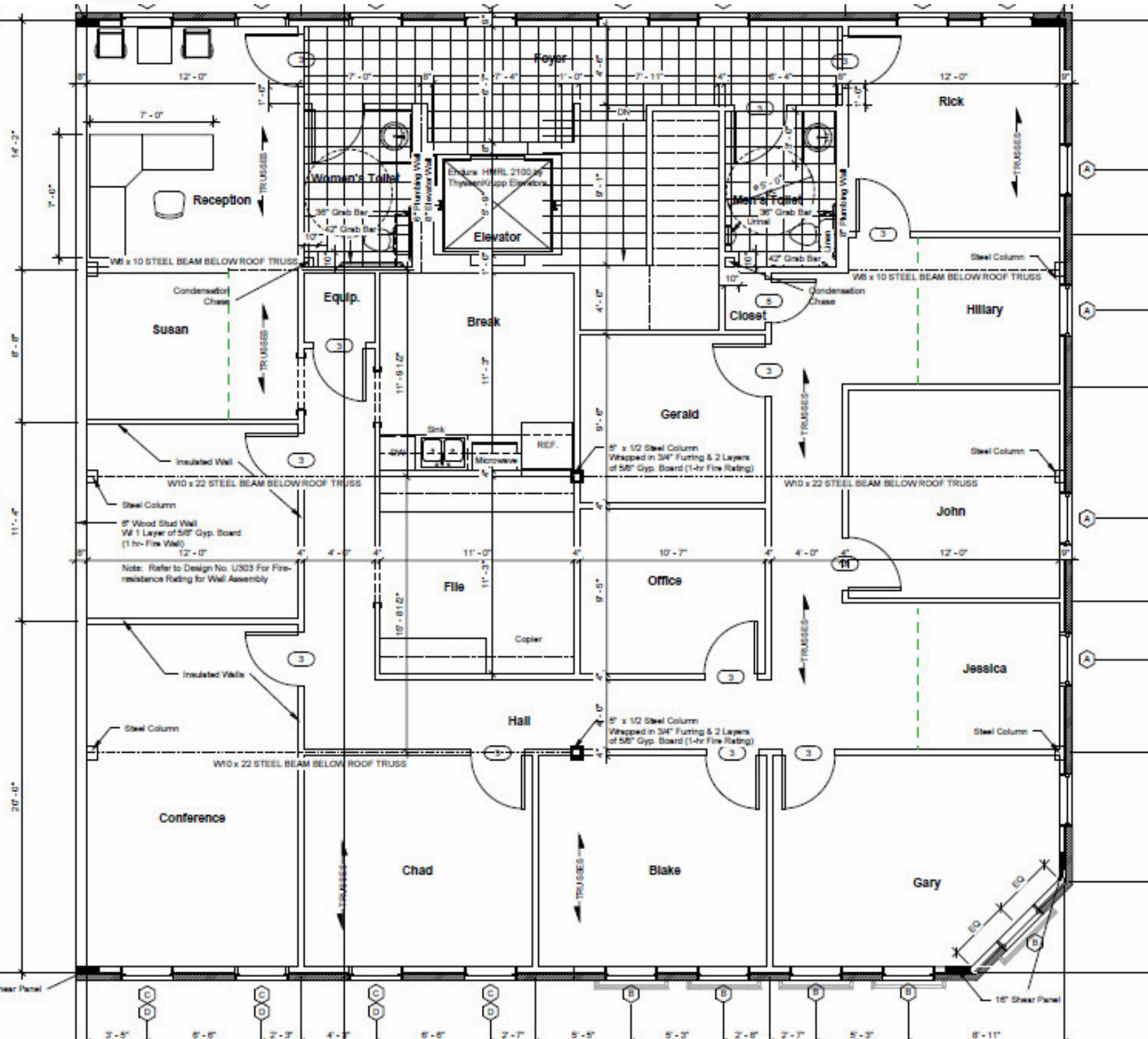
Principal Broker/Investment Brokerage  
601.707.1300  
chirn@cresscre.com



**THE CRESS GROUP**  
Commercial Real Estate Services

# JACKSON STREET CORNER

200 W JACKSON ST, RIDGELAND, MS 39157



**CHAD HIRN, CCIM**

Principal Broker/Investment Brokerage  
601.707.1300  
chirn@cresscre.com

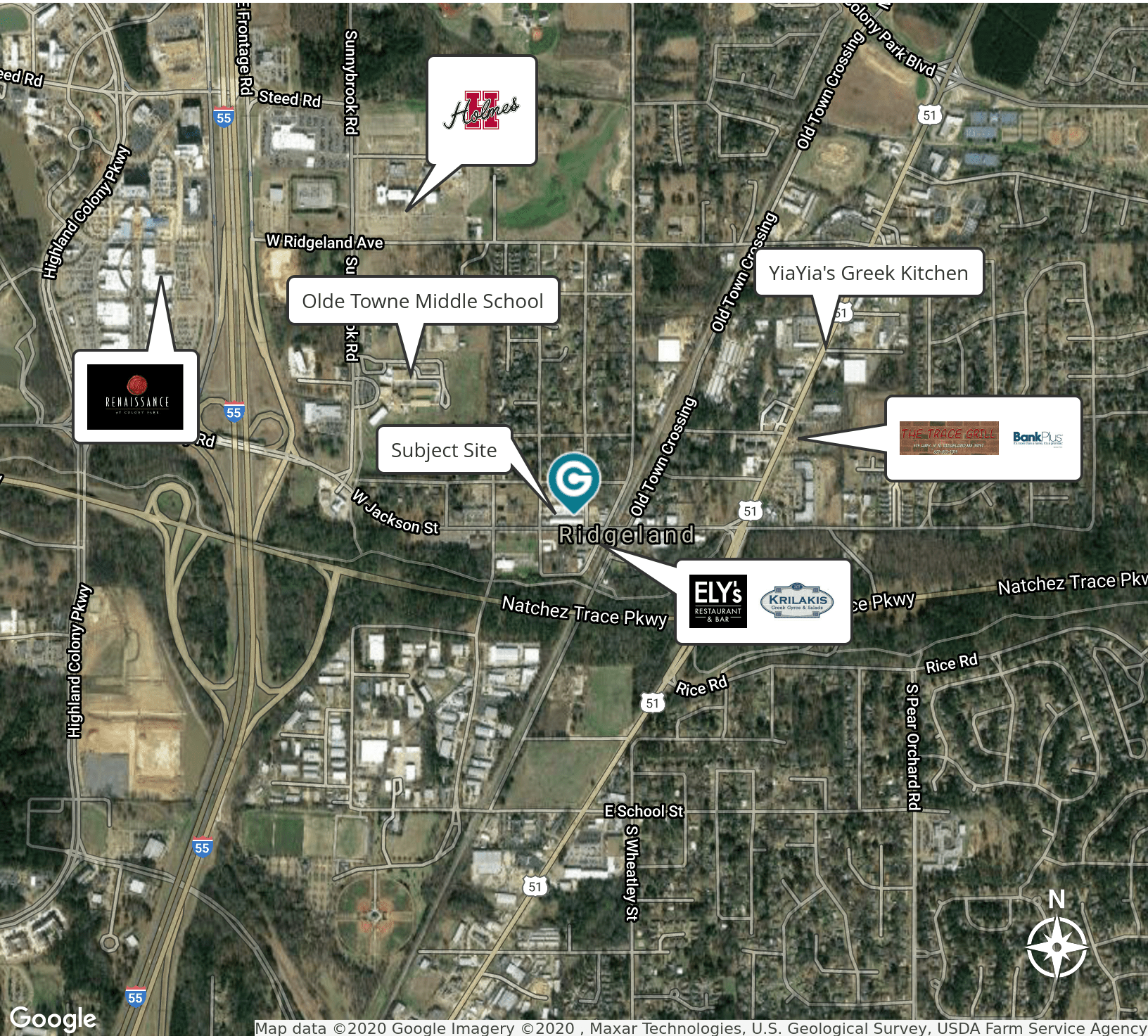


**THE CRESS GROUP**  
Commercial Real Estate Services

OFFICE BUILDING | FOR LEASE

# JACKSON STREET CORNER

200 W JACKSON ST, RIDGELAND, MS 39157



Map data ©2020 Google Imagery ©2020 , Maxar Technologies, U.S. Geological Survey, USDA Farm Service Agency

**CHAD HIRN, CCIM**

Principal Broker/Investment Brokerage  
601.707.1300  
chirn@cresscre.com



**THE CRESS GROUP**  
Commercial Real Estate Services